

Your Personalized Jaguar

2020 JAGUAR F-PACE

SVR 5.0 liter V8 550 HP Supercharged Engine AWD



THE ART OF PERFORMANCE



JAGUAR

JAGUAR

F-PACE

3.0

EXTERIOR



	DESCRIPTION	PRICE
EXTERIOR FEATURES		
EXTERIOR COLOR	British Racing Green	\$4,550.00
COLOR TONE	Gloss Color Tone	\$0.00
WHEELS	22" 5 split-spoke 'Style 5081' with Gloss Black finish	\$2,550.00
ROOF OPTION	Sliding Panoramic roof	\$0.00
ROOF RAILS	Gloss Black roof rails	\$360.00
PRIVACY GLASS	Privacy glass	\$0.00
WINDOW SURROUNDS	Gloss Black Side Window Surround	\$0.00
HEADLIGHTS	Adaptive LED headlights with signature DRL	\$0.00
		TOTAL \$7,460.00



EXTERIOR COLOR



COLOR TONE



WHEELS



ROOF OPTION



ROOF RAILS

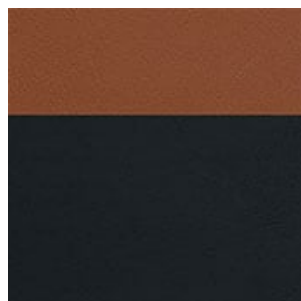


PRIVACY GLASS

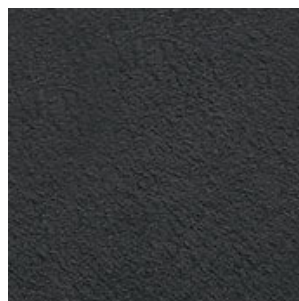
INTERIOR



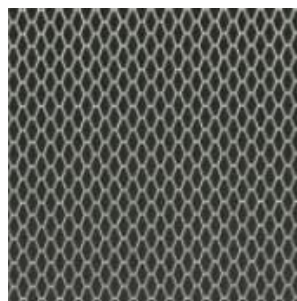
	DESCRIPTION	PRICE
INTERIOR FEATURES		
INTERIOR TRIM	Sienna Tan and Ebony Lozenge quilted leather	\$0.00
FRONT SEATING	Performance 14-way electric front seats with memory	\$0.00
HEADLINING	Ebony Suedecloth	\$0.00
VENEER	Meshed Aluminum trim finisher	\$0.00
STEERING WHEELS	SVR leather steering wheel	\$0.00
STEERING WHEELS	Heated Steering Wheel	\$0.00
DRIVER DISPLAY	Interactive Driver Display	\$0.00
AUDIO	Meridian™ Surround Sound System (825W)	\$450.00
		TOTAL \$450.00



INTERIOR TRIM



HEADLINING



VENEER



STEERING WHEELS



STEERING WHEELS



DRIVER DISPLAY

OPTIONS

	DESCRIPTION	PRICE
PACKS		\$5,813.00
Luxury Interior Pack	-	\$1,165.00
Driver Assistance Pack	-	\$3,600.00
Premium Interior Protection Pack	-	\$499.00
Wheel Protection Pack - Black locks	-	\$549.00
INTERIOR FEATURES		\$355.00
Rear seat remote release levers	-	\$200.00
No cargo space storage rails	-	\$155.00
SAFETY & SECURITY		\$410.00
Activity Key	-	\$410.00
360° Surround Camera	-	\$0.00
Blind Spot Assist	-	\$0.00
INFOTAINMENT		\$1,110.00
Head-up Display	-	\$1,010.00
CD/DVD player	-	\$100.00
		TOTAL \$7,688.00

STANDARD FEATURES

HEADLIGHTS

Auto High Beam Assist (AHBA)

STEERING COLUMN

Electrically adjustable steering column

EXTERIOR FEATURES

Heated Rear Windshield	Variable Intermittent Wipers and Rain sensing Windshield Wipers	Electric front and rear windows with one-touch open/close and anti-trap
Approach Illumination (automatic via remote) & follow me home lighting	LED rear lamps	Solar attenuating windshield
Auto-Dimming, Power Fold, Heated door mirrors with Memory and Approach Lights	Powered tailgate	SVR Satin Grey side vents
SVR rear bumper with Satin Grey finish	SVR front bumper	SVR body-colored door claddings with Satin Grey finishers
Satin Grey hood vents	SVR badge	JAGUAR script and leaper
F-PACE badge	Rear fog light(s)	Body-coloured door mirror caps
Gloss Black grille with Satin Grey surround	SVR reduced section alloy spare wheel	Tire Pressure Monitoring System (TPMS)

INTERIOR FEATURES

Rear metal treadplates	Auto-Dimming interior rear view mirror	Bright Metal Pedals
Twin front cupholders with cover	Additional power sockets	Lockable glovebox
Center console storage surround finishers in Satin Chrome	Ambient Interior Lighting	Overhead light console
Rear passenger air vents	Cargo space with premium luggage tie downs	Center console with side storage
Shopping bag hooks in trunk	Dual-Zone Climate Control	Heated and Cooled Front Seats with Heated Rear Seats
Rear armrest with twin cupholders	40:20:40 split fold SVR rear seat	Integrated front headrests with SVR embossing
Leatherette Instrument Panel	SVR luxury carpet mats	Metal cargo space scuff plate
Metal treadplates with SVR branding	Rear center headrest	Luxtec door trim
Satin Chrome Touchscreen surround		

DYNAMIC FEATURES

All Wheel Drive (AWD)	Adaptive Dynamics with Configurable Dynamic Mode	Cruise Control with Automatic Speed Limiter
Adaptive Surface Response (AdSR) Mode	Hill Launch Assist	Jaguar Drive Control
Electric Power Assisted Steering (EPAS)	Speed proportional steering	Electric Parking Brake (EPB)
Brake pad wear indicator	Red brake calipers	Trailer Stability Assist
8-speed Automatic Transmission	Aluminum gearshift paddles	Electronic Active Differential with Torque Vectoring by Braking

DYNAMIC FEATURES

Switchable Active Sports Exhaust	Quad Tailpipes with 95mm Finishers	395mm front and rear brakes
SportShift Selector		

SAFETY & SECURITY

Rear Camera	360° Parking Aid	Garage door opener (HomeLink®)
Traffic Sign Recognition and Adaptive Speed Limiter	Keyless Entry	Emergency Braking
Valet Mode	Emergency Brake Assist	Dynamic Stability Control and Traction Control
Perimeter sensing alarm and immobilizer	Power operated child locks	Airbags - Driver and front passenger, with seat occupant detector for passenger
Airbags - front side	Airbag - full length side window curtain	ISOFIX rear
Driver Condition Monitor	Lane Keep Assist	All Surface Progress Control (ASPC)
3-flash lane change indicators	Seat belt reminder	Passive front head restraints

INFOTAINMENT

InControl Apps™	Navigation Pro	Protect
Pro Services and Wi-Fi Hotspot	Eco Mode	Bluetooth® telephone connectivity and Audio Streaming
Dynamic Volume Control	Sirius XM™ Satellite Radio	Android Auto™

INFOTAINMENT

Apple CarPlay®	10" Touch Pro	Start-up sequence with movement, dials and lighting
Voice control	Trip computer	

WARRANTY

Jaguar EliteCare

- 5-year/60,000 mile New Vehicle Limited Warranty
- Complimentary Scheduled Maintenance
- 24-Hour Roadside Assistance
- Remote & Protect

TECHNICAL SPECIFICATIONS

Performance (Manufacturer's Estimates)

Acceleration 0-60 mph seconds	4.1
Top speed mph	176

Fuel Consumption

City (mpg)	TBD
Highway (mpg)	TBD
Combined (mpg)	TBD
Tank capacity (US gallons)	21.7

Powertrain

Capacity (cc)	5,000
Maximum power (hp)	550
Maximum torque (lb-ft)	502
Transmission	8-speed Automatic

Weights

Curb Weight (lbs)	4,395
Gross Vehicle Weight (GVW)	5,620
Gross Axle Weight rating (GAWR) - Front	2,710

Weights

Gross Axle Weight rating (GAWR) - Rear	3,130
--	-------

Roof Carrying

Maximum roof load (including cross bars) (lb)	165
---	-----

Dimensions

Overall height (with the roof open) (in)	65.6
Overall length (inc. number plate plinth) (in)	186.3
Overall width with mirrors folded in (in)	81.5
Overall width inc. mirrors (in)	85.6
Front track (in)	64.6
Rear track (in)	65.1
Wheelbase (in)	113.1

Headroom

Maximum front/rear headroom with moon roof (in)	38.0 / 37.5
---	-------------

Legroom

Maximum front/rear legroom (in)	40.3 / 37.2
---------------------------------	-------------

Loadspace Capacity

Maximum Trunk Height (in)	30.6
---------------------------	------

Maximum Trunk Length (in)	42.5
---------------------------	------

Maximum Trunk Width (in)	49.3
--------------------------	------

Width between wheel arches (in)	41.3
---------------------------------	------

Trunk Volume - Max (ft ³)	33.5
---------------------------------------	------

Ground Clearance

Standard ride height (in)	8.46
---------------------------	------

Turning Circle

Curb to curb (ft)	38
-------------------	----

Wall to wall (ft)	40.4
-------------------	------

Turns lock to lock	2.5
--------------------	-----

PRICING

BASE	\$80,600.00
CONFIGURED OPTIONS TOTAL	\$15,598.00
Delivery and Destination Charge	\$1,025.00
Final price	\$97,223.00*

*Price shown is Base Manufacturer's Suggested Retail Price. Excludes destination/handling charge (\$995 for XE, XF, and E-PACE, \$1025 for XJ, F-TYPE, F-PACE, and I-PACE), tax, title, license, and retailer fees, all due at signing, and optional equipment. Total Manufacturer's Suggested Retail Price includes destination/handling charge noted above and may include optional equipment but excludes tax, title, license and retailer fees, all due at signing. Retailer price, terms and vehicle availability may vary. See your local authorized Jaguar Retailer for details.

- JaguarUSA.com
- [Sitemap](#)
- [Terms and Conditions](#)
- [Privacy Policy](#)
- [Accessories](#)
- [Disclaimer](#)
- [Accessibility Statement](#)

© 2020 Jaguar Land Rover North America, LLC, 100 Jaguar Land Rover Way, Mahwah, NJ 07495-1100



<http://www.jaguarusa.com>