



**JAGUAR**

**Parts  
Catalogue**

Jaguar & Daimler  
Series 3

6 Cylinder Saloons

August 1985 Onwards

RTC 9897CB

December 1995

Whilst every effort is made to ensure the accuracy of the particulars contained in this Manual, the Manufacturing Companies will not, in any circumstances, be held liable for any inaccuracies or the consequences thereof.

© Jaguar Cars Ltd 1995

All rights reserved. No part of this publication may be reproduced, stored in a retrieval system or transmitted in any form, whether by electronic, mechanical, photocopying, recording or other means without the permission of Jaguar Cars Limited.

GROUP A

ORDERING TRIMMED PARTS

When ordering a trimmed part the part number that appears in the catalogue transparency must have a two letter suffix code added to denote the trim colour required for ordering purposes only.

COLOUR CODES

JAGUAR COLOUR CODE			UNIPART ORDERING CODE
ADE	Biscuit	Leather	AE
ADP	Mink	Carpet	AP
AFR	Buckskin	Leather	AR
AFW	Barley	Leather	AW
CEM	Mulberry	Leather	CM
CEN	Wine Red	Carpet	CN
AFX	Cotswold Tweed	Cloth	AX
AFY	Chiltern Tweed	Cloth	AY
JEF	Isis Blue	Leather	JF
LDE	Slate	Carpet	LE
LDY	Saville Grey	Leather	LY
NDD	Limestone	Headlining	ND
PDA	Black	Leather	PA
LEA	Smoke Grey	Carpet	XA
AEE	Doeskin	Leather	XE
AEF	Rattan	Carpet	XF
LEE	Penine Tweed	Cloth	YE
LEF	Cheviot Tweed	Cloth	YF
AEM	Magnolia	Leather	ZM

To determine the colour code of a particular part refer to the trim colour combination chart(s).

GROUP A

DAIMLER 4.2 & JAGUAR VDP SALOONS

LEATHER TRIM

TRIM ORDERING CODE SEATS

HEADLINING TRIM PANEL ROOF REAR

FLOOR CARPET. SCUTTLE SIDE CASING

UPPER BC POST CANTRAIL SUNVISORS  
REAR QUARTER TRIM PAD

LOWER BC POST DOOR CASING  
DOOR POCKETS CONSOLE

BASIC  
TRIM  
COLOUR

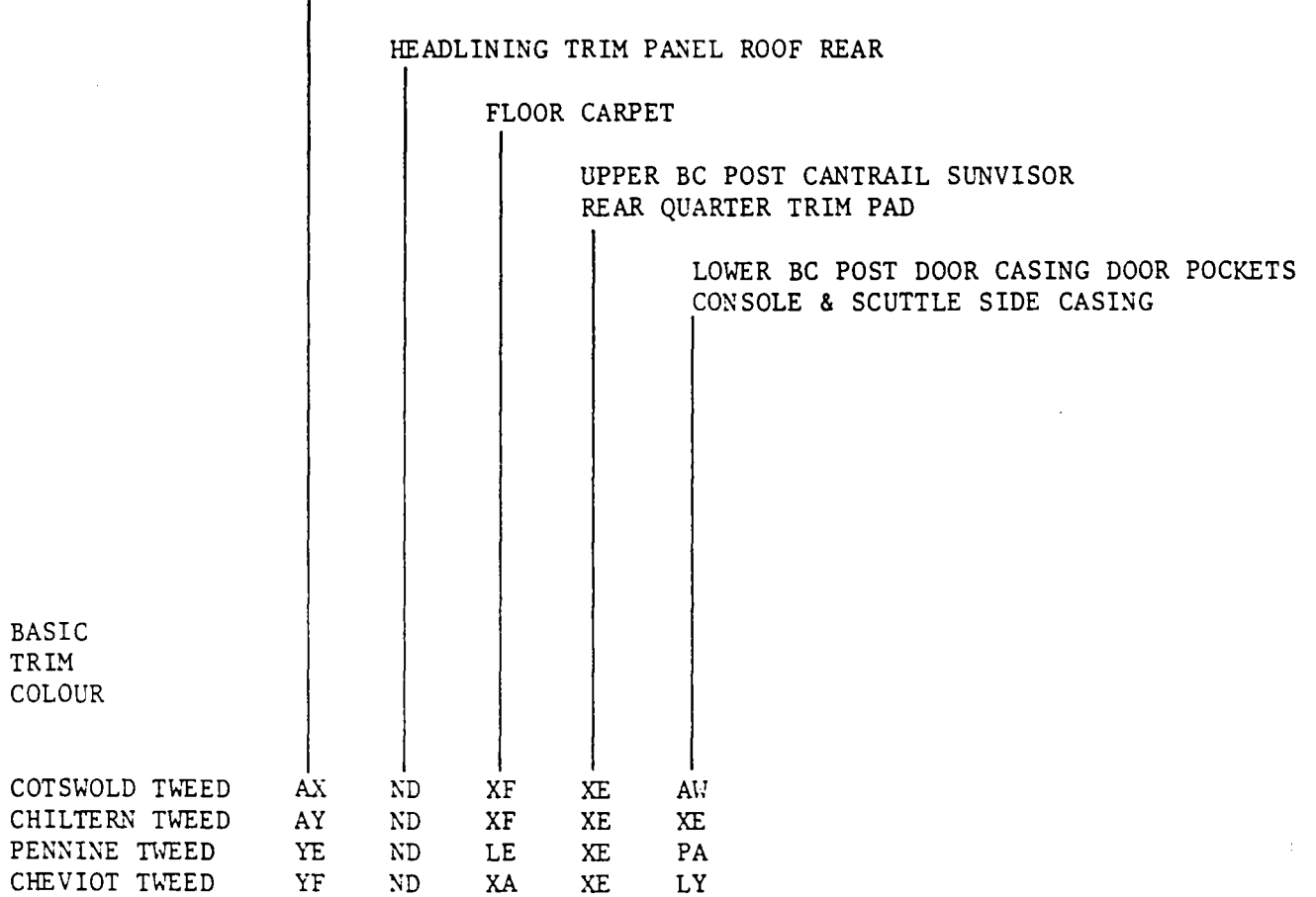
BISCUIT	AE	ND	AP	XE	AE
BARLEY	AW	ND	XF	XE	AW
BUCKSKIN	AR	ND	XF	XE	AR
SAVILE GREY	LY	ND	XA	XE	LY
ISIS BLUE	JK	ND	LE	XE	JK
MULBERRY	CM	ND	CN	XE	CM
BLACK	PA	ND	LE	XE	PA
DOESKIN	XE	ND	XF	XE	XE
MAGNOLIA	ZM	ND	AP	XE	ZM

GROUP A

JAGUAR 3.4 & 4.2, JAGUAR SOVEREIGN 4.2 LITRE

CLOTH TRIM

TRIM ORDERING CODE SEATS



GROUP A

DAIMLER 4.2 & JAGUAR VDP SALOONS

CLOTH TRIM

TRIM ORDERING CODE SEATS

HEADLINING TRIM PANEL ROOF REAR

FLOOR CARPET. SCUTTLE SIDE CASING

UPPER BC POST CANTRAIL SUNVISORS  
REAR QUARTER TRIM PAD

LOWER BC POST DOOR CASING  
DOOR POCKETS CONSOLE

BASIC  
TRIM  
COLOUR

COTSWOLD TWEED	AX	ND	XF	XE	AW
CHILTERN TWEED	AY	ND	XF	XE	XE
PENNINE TWEED	YE	ND	LD	XE	PA
CHEVIOT	YF	ND	XA	XE	LY

GROUP A

JAGUAR XJ6 3.4 & 4.2, JAGUAR SOVEREIGN 4.2 LITRE

LEATHER TRIM

TRIM ORDERING CODE SEATS

BASIC TRIM COLOUR	HEADLINING TRIM PANEL ROOF REAR				
	FLOOR CARPET				
	UPPER BC POST CANTRAIL SUNVISORS REAR QUARTER TRIM PAD				
	LOWER BC POST. DOOR CASING. DOOR POCKETS. CONSOLE & SCUTTLE SIDE CASING.				
BISCUIT	AE	ND	AP	XE	AE
BARLEY	AW	BD	XF	XE	AW
BUCKSKIN	AR	BD	XF	XE	AR
SAVILE GREY	LY	ND	XA	XE	LY
ISIS BLUE	JK	ND	LE	XE	JK
MULBERRY	CM	ND	CN	XE	CM
BLACK	PA	ND	LE	XE	PA
DOESKIN	XE	ND	XF	XE	XE
MAGNOLIA	ZM	ND	AP	XE	ZM

GROUP A

KEY BLANK CROSS REFERENCE CHART

KEY SERIES	CODES	LOCK MANUFACTURER	KEY BLANK PART No.
JC	001 - 854	MARSHALLS	AEU1391/B
FR	001 - 1000	WASO	37H7193 (RTC816/B)

GROUP A

VEHICLE IDENTIFICATION NUMBERING - VIN

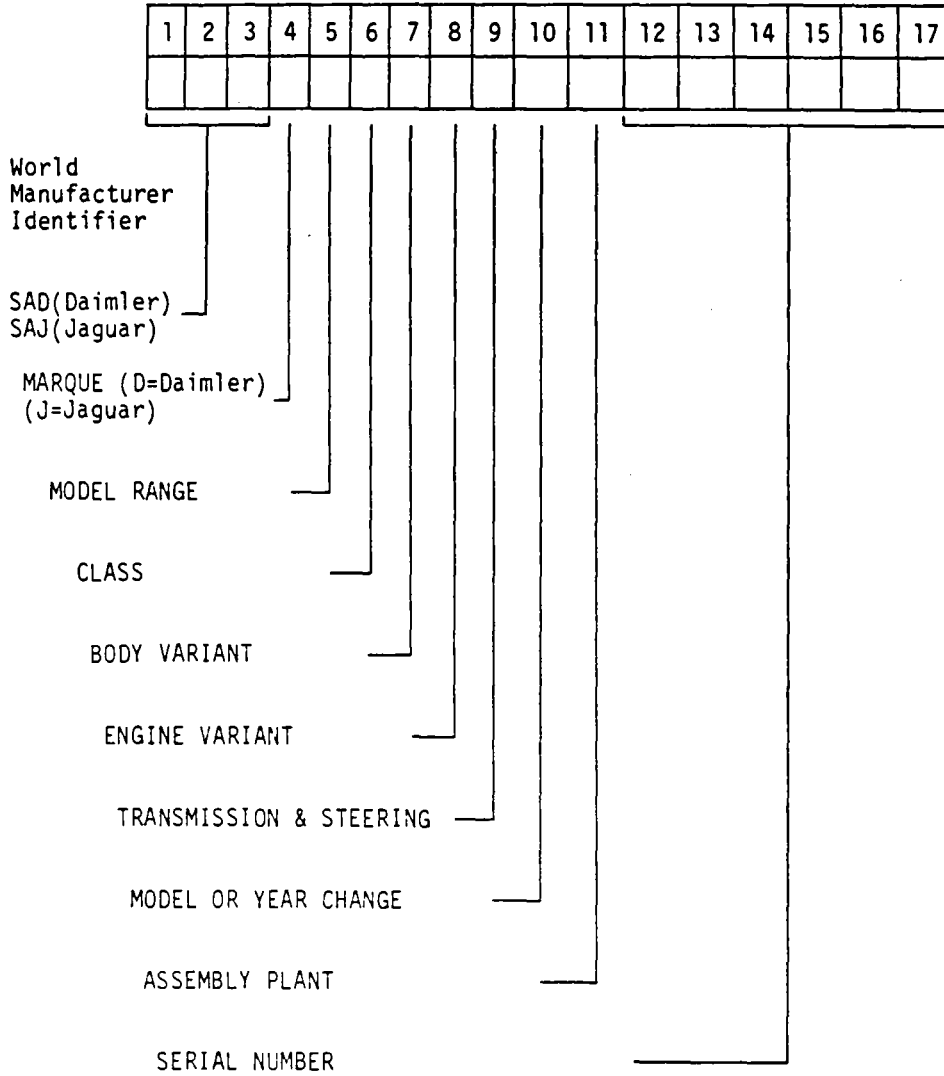
The VIN number comprises of a series of letters and numbers presenting, in code the following information:- Manufacturer Identity, Marque, Model Range, Class, Body & Engine Variants, Transmission & Steering, Model on Year Change, Plant of Assembly and finally the vehicle serial number.

The code for Jaguar Daimler vehicles is broken down as follows:-

PREFIX NUMBERS 1,2 & 3 WORLD MANUFACTURER IDENTIFIER SAD = Daimler      SAJ = Jaguar			PREFIX NUMBER 4 VEHICLE MARQUE D = Daimler      J = Jaguar						
PREFIX NUMBER 5 MODEL RANGE			PREFIX NUMBER 6 CLASS						
A	XJ6	G		A	Base Line	L	CDN Spec.		
B	XJ12	H	XJ40(Sov)	C	Sovereign	N	CDN VDP		
C	Sovereign	K	XJ40(VDP)	F	Japanese Sov	R	VDP/Daimler		
D	Double Six	N	XJS	G	Japanese VDP	V	USA Spec		
F	XJ40(XJ6)	W	Limousine	J	Japanese Spec.	Y	USA VDP		
PREFIX NUMBER 7 BODY VARIANT			PREFIX NUMBER 8 ENGINE VARIANT						
C	2 DR CABRIOLET	L	4 DR SALOON	A	3.4 B	H	2.9 D	S	4.2 FI G
D	2 DR SPORTS OPEN	T	4 DR LIMOUSINE	B	3.6	K	4.2 A	T	4.2 FI E
E	2 DR SPORTS COUPE	V	LANDAULETTE	C	3.6	L	4.2 B	V	5.3 A
		Z	HEARSE	D	4v B	M	4.2 E	W	5.3 B
PREFIX NUMBER 9 TRANSMISSION & STEERING			PREFIX NUMBER 10 MODEL OR YEAR CHANGE						
1	MAN(4sp)RHS	4	Auto LHS	E	3.6	N	4.2 FI A	X	5.3 C
2	MAN(4sp)LHD	7	MAN(5sp)RHS	F	4v D	P	4.2 FI B	Y	5.3 D
3	AUTO RHS	8	MAN(5sp)LHS	G	2.9L	R	4.2 FI D	Z	5.3 E
PREFIX NUMBER 11 ASSEMBLY PLANT			PREFIX NUMBER 10 MODEL OR YEAR CHANGE						
C	BROWNS LANE		A Ser 1/1980 B Ser 2/1981 C Ser 3/1982						
PREFIX NUMBER 12-17 SERIAL NUMBERS									
100001 XJS		300001 Series 3		400001 Hearse					
200001 Limousine		410001 Series 3		500001 XJ40					



GROUP A

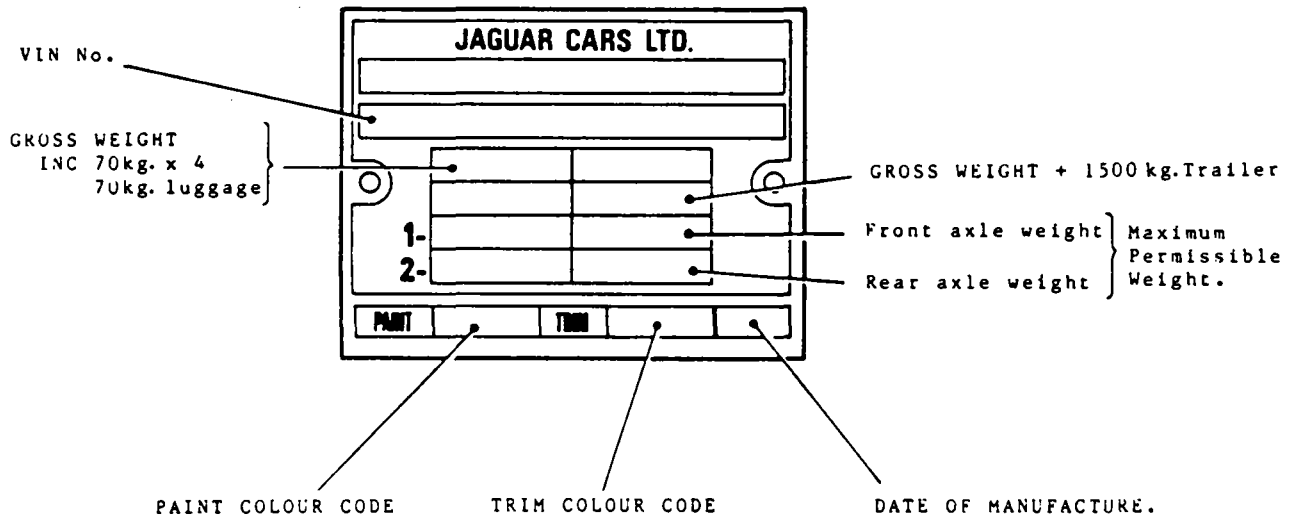


VIN STRUCTURE

B 09L

GROUP A

TYPICAL VIN PLATE



VIN PLATE LOCATED NEAR-SIDE INNER WING

MONTH	CODE	YEAR	CODE
JAN	A	1983	X
FEB	B	1984	Y
MAR	C	1985	Z
APR	D	1986	A
MAY	E	1987	B
JUN	F	1988	C
JUL	G	1989	D
AUG	H	1990	E
SEP	J	1991	F
OCT	K	1992	G
NOV	L	1993	H
DEC	M	1994	J