

Parts Catalogue

Jaguar XJ12

Series III Saloons

from VIN 300001 to 399999

Whilst every effort is made to ensure the accuracy of the particulars contained in this Manual the Manufacturing Companies will not, in any circumstances, be held liable for any inaccuracies or the consequences thereof.

© Jaguar Cars Ltd 1999

All rights reserved. No part of this publication may be reproduced, stored in a retrieval system or transmitted in any form, whether by electronic, mechanical, photocopying, recording or other means without the permission of Jaguar Cars Limited.

JAGUAR

Replacement parts that are not of genuine Jaguar supply cannot be relied upon to be of correct specification, material, and workmanship and therefore Jaguar cannot be expected to extend warranty to vehicles which have been fitted with parts not supplied by them.

Jaguar reserves the right to make changes or improvements in the construction or specification of their products at any time.

IN ORDER TO ENSURE PROMPT AND CORRECT EXECUTION OF YOUR ORDERS, IT IS ESSENTIAL TO QUOTE:

1. The relative Unit Number, together with prefixes, suffixes and specification references where applicable.
e.g. Axle, Body, Vehicle Identification, Engine, Gearbox Numbers etc.
2. The Part Number and description (prefix and suffix letters to Part Numbers must always be quoted).
3. Always state the colour of carpets, painted items, trim items etc., using the colour code from the Vehicle Identification Number (VIN) plate and the colour combination key to identify the colour name.
4. The quantity required bearing in mind that the quantities shown are those used in the application actually illustrated. Sometimes only minimum package quantities are available. These packs may well contain more parts than are required for a single job; for details of packaged quantities, see the Service Parts List.

THE LISTING OR ILLUSTRATING OF AN ITEM DOES NOT
GUARANTEE ITS AVAILABILITY

INDEX TO INTRODUCTION SECTION - SERIES III

MICROFICHE PAGE REFERENCE	PAGE TITLE	REMARKS
B03	GEOGRAPHICAL GROUPINGS	Country groupings used in the parts list are referenced on this page.
B04	STANDARD ABBREVIATIONS	Standard abbreviations used in the parts list text are referenced on this page.
B05	VEHICLE IDENTIFICATION NUMBERING SYSTEM	VIN Serial letters and numbers explained. VIN plate location.
B06	TRIM COLOUR CODES	Denotes trim colour codes applicable to this vehicle.
B07	TRIM COLOUR COMBINATION CHART - LEATHER	Denotes trim colour ranges applicable to specific areas of the vehicle interior.
B08	TRIM COLOUR COMBINATION CHART - CLOTH	Denotes trim colour ranges applicable to specific areas of the vehicle interior.
B09	KEY BLANK CROSS REFERENCE CHART	Key series, Codes, Lock manufacturer, Key blank part number.
B10-14	HOW TO USE THE PARTS MICROFICHE	Details of microfiche layout and content. Method of use explained.

COUNTRY GROUPS

Where appropriate, applications for individual Markets are detailed as "Remarks" adjacent to specific Part Numbers. For convenience, Markets are sometimes categorised into geographical groups. "Exceptions/exclusions" from these geographical groups are detailed as footnotes on the appropriate page. Where the vehicle specification clearly excludes a feature from application to your market, the exclusion note may be omitted.

Definitions of the geographical groups used in this catalogue are as follows:

AUSTRALASIA: Australia, New Zealand.

CARIBBEAN: Panama, Bahamas.

EASTERN EUROPE: Bulgaria, Czechoslovakia, Hungary, Poland, Russia.

EEC: Austria, Belgium, Canary Islands, Denmark, Eire, Finland, France, Germany, Greece, Holland, Italy, Luxembourg, Portugal, Slovenia, Spain, Sweden.

MEDITERRANEAN: Cyprus, Egypt, Israel, Jordan, Lebanon, Morocco, Syria, Turkey.

EUROPE: Austria, Belgium, Denmark, Eire, Finland, France, Germany, Gibraltar, Greece, Holland, Italy, Luxembourg, Norway, Malta, Portugal, Spain, Canary Islands, Sweden, Switzerland, UK.

FAR EAST: China, Hong Kong, Indonesia, Korea, Malaysia, Philippines, Singapore, Sri Lanka, Thailand, Vietnam.

MIDDLE EAST: Abu Dhabi, Bahrain, Dubai, Kuwait, Oman, Qatar, Saudi Arabia.






RUSSIA: Belarus, Estonia, Kazakhstan, Latvia, Lithuania, Moscow, Ukraine, Uzbekistan.

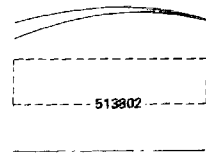
SOUTH AMERICA: Argentina, Chile, Paraguay.

GROUP A

SYMBOLS

-  Right Hand Steering
-  Left Hand Steering
-  Right Hand
-  Left Hand
-  Safety Item

-  Denotes parts fitted up to serial number(s) shown below.
-  Indicates parts fitted from a serial number(s) up to another serial number(s).
-  Denotes parts fitted from a serial number(s) onwards.
-  Refer to note at foot of page.
-  Refers to associated page or indicates part or assembly to which item connects.



Represents location of details.

Encloses parts which form an assembly or kit.

Indicates connecting items when these are not illustrated in their true relationship.

STANDARD ABBREVIATIONS

- 1st } On or adjacent to gears
- 2nd }
- 3rd }
- 4th }
- 5th }
- A/C Air Conditioning
- A/R As required.
- Assy. Assembly
- Auto. Automatic Gearbox
- Carb. Carburettor models
- CKD Completely knocked down
- C/R Compression ratio
- g Grammes
- LWB Long Wheel Base models
- NLS No Longer Serviced
- NSS Not Supplied Separately
- O/D Overdrive
- PAS Power Assisted Steering
- Pelinj. Petrol injection models
- S/D Order on Service Division
- S/O Special Order
- SS Selected Sizes
- SWB Short Wheel Base Models
- 12.75" Lengths in inches

COUNTRY ABBREVIATIONS

- A Austria
- AUS Australia
- B Belgium
- CDN Canada
- CH Switzerland
- CI Ivory Coast
- D Germany
- DK Denmark
- DZ Algeria
- E Spain
- EEC Common Market Countries
- F France
- GB United Kingdom
- I Italy
- J Japan
- L Luxembourg
- MA Morocco
- N Norway
- NZ New Zealand
- P Portugal
- S Sweden
- SF Finland
- SN Senegal
- TN Tunisia
- USA United States of America
- VN Vietnam

VEHICLE IDENTIFICATION NUMBERING SYSTEM

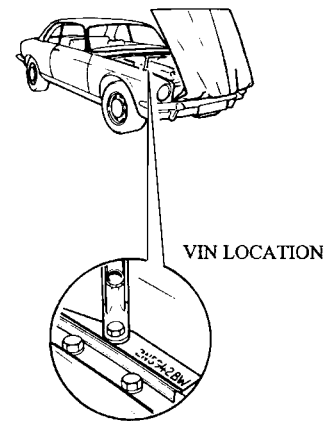
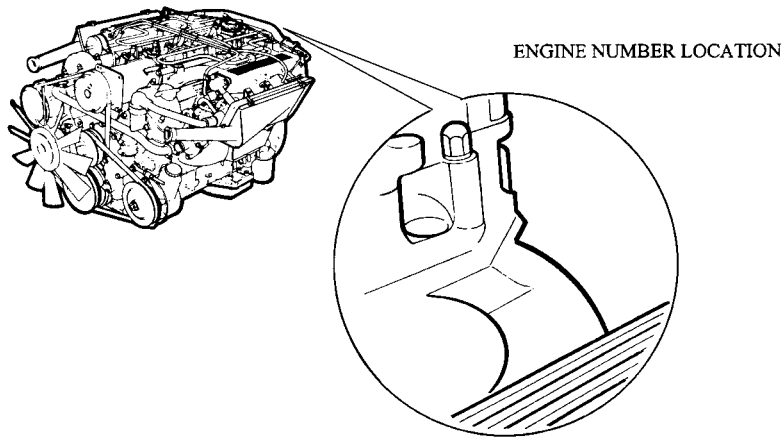
VIN PREFIX CODE

JBALW3CC
JBALW4CC
JBVLV49C
JBALY3CC
JBJLV3CC
JBJLV4CC
JBVLX49C
DDALW3CC
DDALW4CC
DDALY3CC
DDRLW3CC
DDRLW4CC
DDRLY3CC
DDRLV3CC

MODEL DERIVATIVE

Series 3 XJ12 RHD Automatic
Series 3 XJ12 LHD Automatic
Series 3 XJ12 LHD Automatic - CDN/USA 1979
Series 3 XJ12 RHD Automatic - Australia
Series 3 XJ12 RHD Automatic - Japan
Series 3 XJ12 LHD Automatic - Japan
Series 3 XJ12 LHD Automatic - California 1979
Series 3 Daimler Double-Six RHD Automatic
Series 3 Daimler Double-Six LHD Automatic
Series 3 Daimler Double-Six RHD Automatic - Australia
Series 3 Double-Six Vanden Plas RHD Automatic
Series 3 Double-Six Vanden Plas LHD Automatic
Series 3 Double-Six Vanden Plas RHD Automatic - Australia
Series 3 Double-Six Vanden Plas RHD Automatic - Japan

ENGINE SIZE - 5.3 Litre prefix code 7P.



TRIM COLOUR CODES

When ordering a trimmed part the part number that appears in the catalogue/transparency must have a two letter suffix code added to denote the trim colour.

COLOUR CODES

AC	Tan	LG	Graphite 1
AD	Cinnamon	LM	Graphite 2
AE	Biscuit	LY	Savile Grey
AF	Chamois	MA	Silver
AH	Fawn	PA	Black
AN	Sand	PB	Ebony
AP	Mink	XA	Smoke Grey
AR	Buckskin	XB	Fleet Blue 2
AS	Parchment	XC	County Tan
BC	Copper	XD	Burnt Umber
CB	Russet	XE	Doeskin
CC	Garnet	XF	Rattan
CM	Mulberry	XG	Maple
CN	Wine Red	YB	Mandarin Red
HC	Deep Olive	YC	Rouge
JB	Dark Blue	YD	Loganberry
JE	Navy	ZB	Beige 3
JF	Isis Blue	ZC	Amber 1
JG	Marine Blue	ZF	Beige 4
JM	Fleet Blue 1	ZH	Amber 2
LB	Grey		
LE	Slate		

To determine the colour code of a particular part refer to the trim colour combination chart(s)

TRIM COLOUR COMBINATION CHART LEATHER TRIM - UP TO VIN 346687

DIRECTIONS FOR USE

1. Establish the basic trim colour of the car. These are the colours which appear in the Jaguar/Daimler sales and advertising literature.
2. Select the basic trim colour in the left hand column of the chart.
3. Select the item required from the descriptions across the top of the chart.
4. By reading across and down the colour code for the parts can be obtained.

BASIC TRIM COLOUR	Underscuttle casing, cantrail-crash roll, upper B-C post, D post flange finishers, boot trim and parcel shelf	Seats	Carpets	Door trim rolls - Jaguar models	Door trim rolls - Daimler models	Door casings, pockets, armrest, lower B-C post casings, console	Scuttle side casing	Headlining, rear header panel S/L roof flange finisher	
CINNAMON	PA	AD	AP	AD	PA	AD	PA	AH	
BISCUIT	PA	AE	AP	AE	PA	AE	AE	AH	→ VIN 326519
BISCUIT	PA	AE	AP	AE	PA	AE	AE	XJ	VIN 326520 →
RUSSET	PA	CB	CB	CB	PA	CB	PA	LB	
DARK BLUE	PA	JB	LB	JB	PA	JB	PA	LB	
BLACK	PA	PA	LB	PA	PA	JB	PA	LB	→ VIN 326519
BLACK	PA	PA	LE	PA	PA	PA	PA	LF	VIN 326520 →
COUNTY TAN	PA	XC	XG	XC	-	XC	XC	XJ	
MANDARIN RED	PA	YB	YC	YB	-	YB	YB	LF	
ISIS BLUE	PA	JF	LE	JF	-	JF	JF	LF	

TRIM COLOUR COMBINATION CHART LEATHER TRIM (NOT VDP) - FROM VIN 346688

DIRECTIONS FOR USE

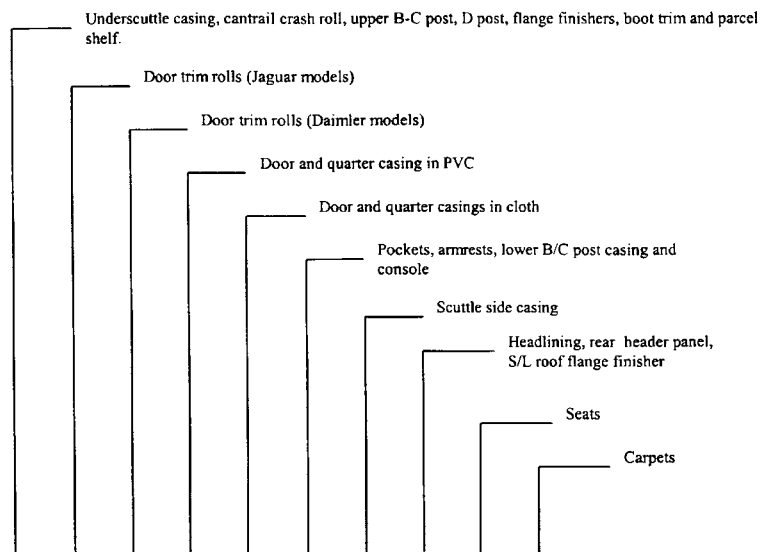
1. Establish the basic trim colour of the car. These are the colours which appear in the Jaguar/Daimler sales and advertising literature.
2. Select the basic trim colour in the left hand column of the chart.
3. Select the item required from the descriptions across the top of the chart.
4. By reading across and down the colour code for the parts can be obtained.

BASIC TRIM COLOUR	Underscuttle casing, cantrail-crash roll, upper B-C post, D post flange finishers, boot trim and parcel shelf, fascia surround, and sun visor.	Seats	Carpets and heel mats	Door casings, pockets, armrest, lower B-C post casings, console	Scuttle side casing	Headlining, rear header panel S/L roof flange finisher	Fur fabric rugs
COUNTY TAN	PA	XC	XG	XC	XC	ND)
BISCUIT	PA	AE	AP	AE	AE	ND)
ISIS BLUE	PA	JF	LE	JF	JF	ND)
BLACK	PA	PA	LE	PA	PA	ND) Jaguar Only
BUCKSKIN	PA	AR	XF	AR	AR	ND)
SAVILE GREY	PA	LY	XA	LY	LY	ND)
MULBERRY	PA	CM	CN	CM	CM	ND)
DOESKIN	PA	XE	XF	XE	XE	ND)
DOESKIN	PA	XE	XF	XE	XF	ND	XF)
BURNT UMBER	PA	XD	XF	XD	ZF	ND	XF)
COUNTY TAN	PA	XC	XG	XC	XG	ND	XG)
ISIS BLUE	PA	JF	LE	JF	LE	ND	LE) Daimler Only
BUCKSKIN	PA	AR	XF	AR	AR	ND	XF)
SAVILE GREY	PA	LY	XA	LY	LY	ND	XA)
MULBERRY	PA	CM	CN	CM	CM	ND	CN)
BISCUIT	PA	AE	AP	AE	AE	ND	AP)
BLACK	PA	PA	LE	PA	PA	ND	LE)

TRIM COLOUR COMBINATION CHART CLOTH TRIM -UP TO VIN 346687

DIRECTIONS FOR USE

1. Establish the basic trim colour of the car. These are the colours which appear in the Jaguar/Daimler sales and advertising literature.
2. Select the basic trim colour in the left hand column of the chart.
3. Select the item required from the descriptions across the top of the chart.
4. By reading across and down the colour code for the parts can be obtained.



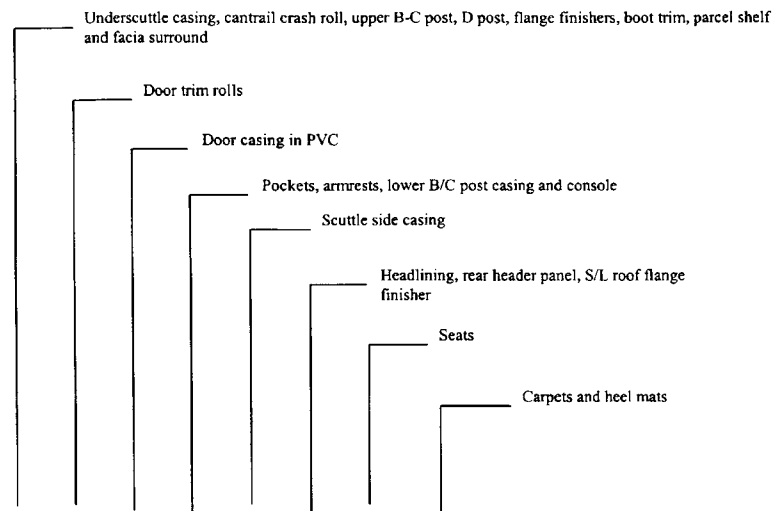
BASIC TRIM COLOUR

SAND 2	PA	AE	PA	AE	AN	AE	AE	AH	AN	AP
GARNET	PA	CB	PA	CB	CC	CB	CB	LB	CC	CB
NAVY	PA	JB	PA	JB	JE	JB	JB	LB	JE	LB
EBONY	PA	PA	PA	PA	PB	PA	PA	LB	PB	LB
FAWN	PA	AE	-	AE	AH	AE	AP	XJ	AH	AP
LOGANBERRY	PA	YB	-	YB	YD	YB	CC	LF	YD	YC
COPPER	PA	BC	-	XC	BC	XC	XG	LF	BC	XG
MARINE BLUE	PA	JF	-	JF	JG	JF	LE	LF	JG	LE

TRIM COLOUR COMBINATION CHART CLOTH TRIM - FROM VIN 346688

DIRECTIONS FOR USE

1. Establish the basic trim colour of the car. These are the colours which appear in the Jaguar/Daimler sales and advertising literature.
2. Select the basic trim colour in the left hand column of the chart.
3. Select the item required from the descriptions across the top of the chart.
4. By reading across and down the colour code for the parts can be obtained.



BASIC TRIM COLOUR	PA	AE	AE	AE	AE	ND	ZB	AP	→ VIN
BEIGE 3	PA	AE	AE	AE	AE	ND	ZB	AP	→ VIN 356783
AMBER 1	PA	XC	XC	XC	XC	ND	ZC	XG	→ VIN 363749
FLEET BLUE 1	PA	JF	JF	JF	JF	ND	JM	LE	→ VIN 356599
GRAPHITE 1	PA	PA	PA	PA	PA	ND	LG	LE	→ VIN 356537
BEIGE 4	PA	AE	AE	AE	AE	ND	ZF	AP	VIN 356784 →
AMBER 2	PA	XC	XC	XC	XC	ND	ZH	XG	VIN 363750 →
FLEET BLUE 2	PA	JF	JF	JF	JF	ND	XB	LE	VIN 356560 →
GRAPHITE 2	PA	PA	PA	PA	PA	ND	LM	LE	VIN 356538 →
PARCHMENT	PA	XE	XE	XE	XE	ND	AS	XF	VIN 366095 →

TRIM COLOUR COMBINATION CHART

LEATHER TRIM - VANDEN PLAS ONLY UP TO VIN 346687

DIRECTIONS FOR USE

1. Establish the basic trim colour of the car. These are the colours which appear in the Jaguar/Daimler sales and advertising literature.
2. Select the basic trim colour in the left hand column of the chart.
3. Select the item required from the descriptions across the top of the chart.
4. By reading across and down the colour code for the parts can be obtained.

BASIC TRIM COLOUR	PA	AC	AH	AF	AP
TAN	PA	AC	AH	AF	AP
CHAMOIS	PA	AF	AH	AF	AP
DEEP OLIVE	PA	HC	AH	AF	AP
DOESKIN	PA	XE	XJ	XF	XF
BURNT UMBER	PA	XD	XJ	XF	XF

A post finisher, door seals, cubby box, front door roll, rear door roll, luggage floor covering, facia surround, sun visors, steering wheel, steering wheel insert, steering column cowl.

Finisher D post, front seats, rear seats, front and rear door casings, B-C post finisher, door pockets, armrests, rear parcel shelf, parcel shelf speaker cover, console, head restraint, carpet binding.

B-C post upper, headlining, trim panel roof front, trim panel roof rear, trim panel cantrail and quarter.

Fur fabric rugs.

Floor carpet, dash side trim.

TRIM COLOUR COMBINATION CHART

LEATHER TRIM - VANDEN PLAS ONLY - FROM VIN 346688

DIRECTIONS FOR USE

1. Establish the basic trim colour of the car. These are the colours which appear in the Jaguar/Daimler sales and advertising literature.
2. Select the basic trim colour in the left hand column of the chart.
3. Select the item required from the descriptions across the top of the chart.
4. By reading across and down the colour code for the parts can be obtained.

BASIC TRIM COLOUR	A post finisher, door seals, cubby box, front door roll, rear door roll, luggage floor covering, facia surround, sun visors, steering wheel, steering wheel insert, steering column cowl, rear parcel shelf, B-C post upper, trim panel cantrail and quarter.				
	Headlining, trim panel roof rear.				
	Fur fabric rugs.			Floor carpet, dash side trim.	
	PA	XE	ND	XF	XF
DOESKIN	PA	XC	ND	XG	XG
COUNTY TAN	PA	XD	ND	XF	XF
BURNT UMBER	PA	JF	ND	LE	LE
ISIS BLUE	PA	PA	ND	LE	LE
BLACK	PA	AE	ND	AP	AP
BISCUIT	PA	AR	ND	XF	XF
BUCKSKIN	PA	LY	ND	XA	XA
SAVILE GREY	PA	CM	ND	CN	CN
MULBERRY	PA				

KEY BLANK CROSS REFERENCE CHART

KEY SERIES	CODES	LOCK MANUFACTURER	KEY BLANK PART No.
CONVENTIONAL KEYS:			
BC	301 - 360	LOWE & FLETCHER	CZK 3438
FK	876 - 955	WILMOT BREEDEN	17H 2475
FP	626 - 750	WILMOT BREEDEN	AKA 463
FR	751 - 875	WILMOT BREEDEN	37H 7189
FS	001 - 099, 876 - 955	WILMOT BREEDEN	17H 2475
FT	101 - 225, 301 - 360	WILMOT BREEDEN	CZK 3438
TS	300 - 369	STREBOR	37H 4557
NP	0001 - 1000	NEIMAN	BAU 1849
STEERING LOCK TYPE KEYS:			
B	001 - 1000	BRITAX	37H 7194
B	001 - 1000	BRITAX	37H 7195*
BL RO.VV.VL.	1001N - 2000N	LOWE & FLETCHER	AAU 8276
BP	001 - 1000	BRITAX	37H 7194
BP	001 - 1000	BRITAX	37H 7195*
D	1 - 64	BRITAX	RTC 817B
FH (LONG TIP)	1 - 3948	WASO	37H 7192
FH	1 - 3948	WASO	37H 7193
FR	1 - 1080	WASO	37H 7193
L & F	17001 - 18000	BRITAX	37H 7197
L & F	86001 - 88000	BRITAX	37H 7197
LR	001 - 1000	BRITAX	37H 7194
LR	001 - 1000	BRITAX	37H 7195*
NH	2001 - 3000	WILMOT BREEDEN	37H 6108
NJ	001 - 1500	WILMOT BREEDEN	37H 1494
TM	3001 - 4000	C.E. MARSHALL	37H 8689
A	11225 - 53332	MAGNATEX	27H 9391
NO SERIES LETTER	2001 - 3000	NEIMAN	37H 7190
NO SERIES LETTER	7001 - 9000	NEIMAN	AAU 1888
NO SERIES LETTER (Collapsible Head)	7001 - 9000	NEIMAN	BAU 1921
*PRE CUT No. 3 DEPTH FIRST CUT BLANK.			