

UK
1966
for 67
MY
also ROW

THE 1967 RANGE OF **JAGUAR** CARS

USA

THE NEW LINE OF **JAGUAR** CARS

OK

JAGUAR

MARK 2

2.4, 3.4 & 3.8 LITRE SALOONS

ENGINE. Six cylinder 'XK' engine, 70° twin overhead camshafts, twin carburettors. **2.4 Litre:** 83 mm. bore x 76.5 mm. stroke, capacity 2,483 c.c., 120 b.h.p. at 5,750 r.p.m. **3.4 Litre:** 83 mm. bore x 106 mm. stroke, capacity 3,442 c.c., 210 b.h.p. at 5,500 r.p.m. **3.8 Litre:** 87 mm. bore x 106 mm. stroke, capacity 3,781 c.c., 220 b.h.p. at 5,500 r.p.m. Compression ratios 8 to 1 or optional 7 to 1.

TRANSMISSION. (Manual) Four-speed all-synchromesh gearbox; gear change lever on floor between front seats. (Overdrive) as above, with addition of a Laycock de Normanville overdrive controlled by lever on steering column. (Automatic) Borg Warner automatic transmission with driver controlled intermediate gear hold. Selector lever on steering column.

SUSPENSION. (Front) Independent suspension—semi-trailing wishbones, coil springs with telescopic shock absorbers. (Rear) Trailing link suspension—cantilever semi-elliptic springs, radius arms, telescopic shock absorbers.

BRAKES. Servo-assisted disc brakes featuring quick-change pads.

STEERING. Burman re-circulating ball type. 4.7 turns lock to lock.

WHEELS & TYRES. Pressed steel bolt-on disc wheels. Dunlop 6.40x15 in. tyres and tubes. Wire spoke wheels with centre lock hubs available as optional extra.

FUEL SUPPLY. 12 Imperial gallon tank. S.U. electric pump.

ELECTRICAL EQUIPMENT & INSTRUMENTS. 12-volt electrical system. Extensive equipment includes headlamp flashing unit, reversing lamp, twin-blade two-speed windscreen wipers, windscreen washers, cigar-lighter, all fitted as standard. Comprehensive instrumentation to Jaguar normal high standards.

BODY. All steel four-door five-seater saloon. Seats upholstered in Ambla material over deep Dunlopillo cushions. Armrests fitted to front and rear doors. Central folding armrests in rear compartment. Tufted carpets over felt underlay. Seat belt anchorage points front and rear. 13½ cubic feet capacity luggage boot.

HEATING & DEMISTING. High output system with separate heating duct to rear compartment. Two speed booster fan.

SPARE WHEEL & TOOLS. Spare wheel housed beneath boot floor. Set of tools in fitted and lined container. Jack and wheelbrace.

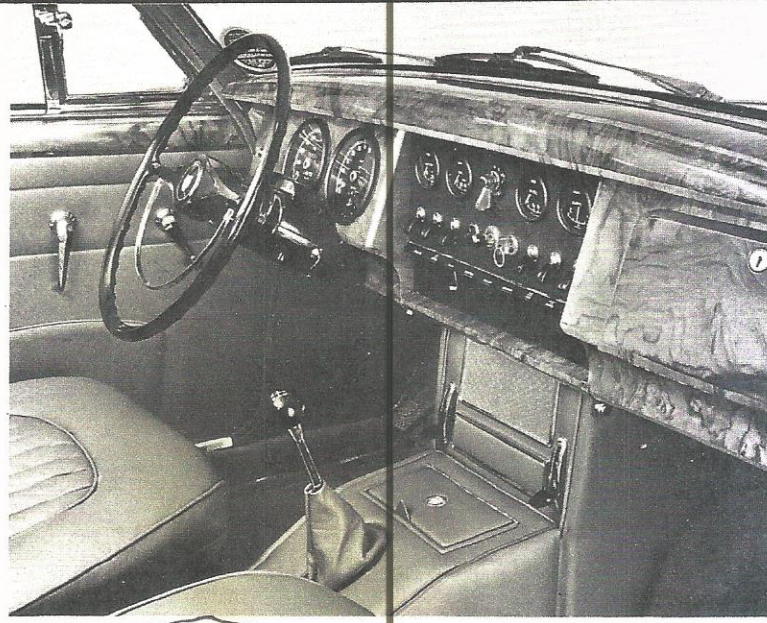
PRINCIPAL DIMENSIONS. Wheelbase 8 ft. 11½ ins., track front 4 ft. 7 ins., track rear 4 ft. 5½ ins., overall length 15 ft. 0½ ins., overall width 5 ft. 6½ ins., overall height 4 ft. 9½ ins., turning circle 33½ ft.

USA

JAGUAR

3.40

3.4 LITRE SEDAN



ENGINE. Six cylinder 'XK' engine, 70° twin overhead camshafts, twin carburetors 3.4 Litre: 3.27 ins. bore X 4.17 ins. stroke, capacity 3,442 c.c., 210.6 cu. ins., 210 b.h.p. at 5,500 r.p.m. Compression ratio 8 to 1.

TRANSMISSION. (Manual) Four-speed all-synchromesh gearbox; gear change lever on floor between front seats. Hypoid rear axle ratio 3.54 to 1. (Automatic) Borg Warner automatic transmission with driver controlled intermediate gear hold. Ratio 3.54 to 1. Selector lever on steering column.

SUSPENSION. (Front) Independent suspension—semi-trailing wishbones, coil springs with telescopic shock absorbers. (Rear) Trailing link suspension—cantilever semi-elliptic springs, radius arms, telescopic shock absorbers.

BRAKES. Servo-assisted disc brakes featuring quick-change pads.

STEERING. Power assisted steering. Burman re-circulating ball type. 4.7 turns lock to lock. Turning circle 33½ ft.

FUEL SUPPLY. 14½ gallon tank. S.U. electric pump.

ELECTRICAL EQUIPMENT & INSTRUMENTS. 12-volt electrical system. Extensive equipment includes headlamp flashing unit, reversing lamp, twin-blade two-speed windshield wipers, windshield washers, cigar-lighter, all fitted as standard. Comprehensive instrumentation to Jaguar normal high standards.

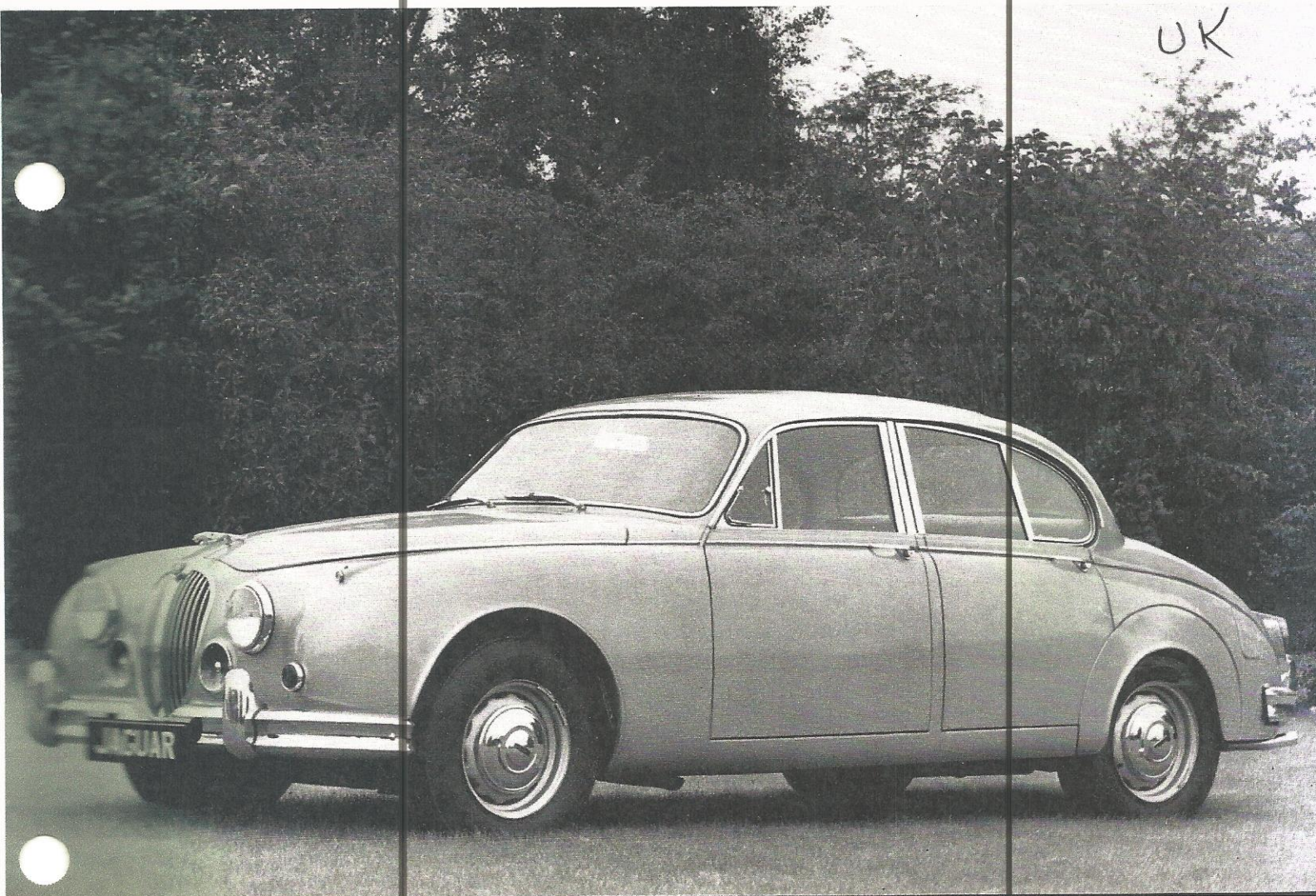
BODY. All steel four-door five-seater sedan. Seats upholstered in vinyl over deep Dunlopillo cushions. Armrests fitted to front and rear doors. Central folding armrests in rear compartment. Tufted carpets over felt underlay. Seat belt anchorage points front and rear. 13½ cubic feet capacity luggage trunk.

HEATING & DEMISTING. High output system with separate heating duct to rear compartment. Two speed booster fan.

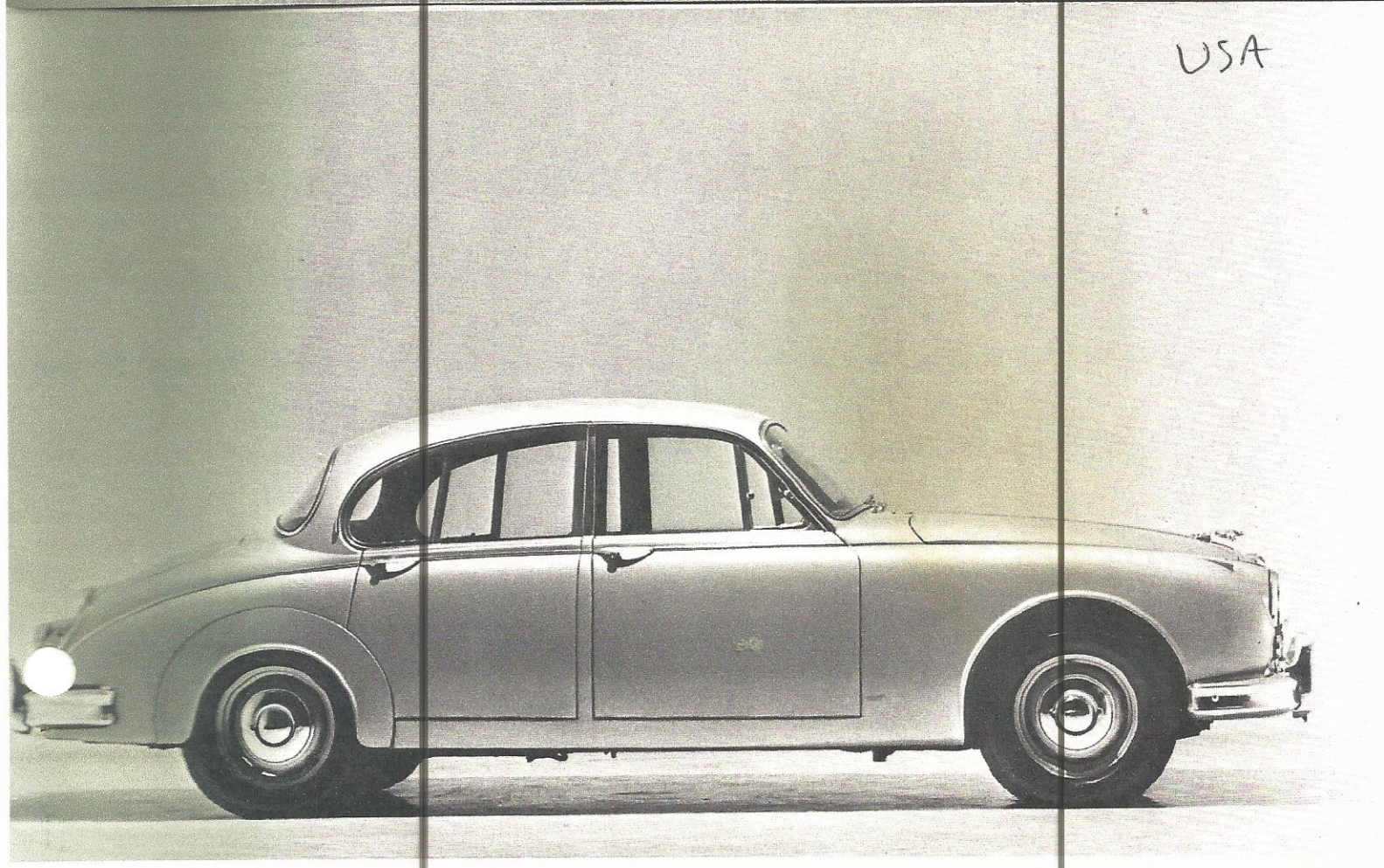
SPARE WHEEL & TOOLS. Spare wheel housed beneath boot floor. Jack and wheelbrace. Hammer, with wire spoke wheels.

PRINCIPAL DIMENSIONS. Wheelbase 107¾ ins. track front 55 ins. track rear

UK



USA



UK

The issue of this catalogue does not constitute an offer. Jaguar Cars Ltd. reserve the right to amend specifications at any time without notice.

Printed in England by Buckler & Webb Ltd., Birmingham, 3

USA

Optional Equipment available on all Jaguar models includes air conditioning, radio, whitewall tires, tinted glass and heated rear window.

The color finishes and combinations described are those in current use at the time of publication of this booklet. Jaguar Cars Ltd. reserves the right to alter or withdraw any color finish without notice.

The issue of this catalog does not constitute an offer. Jaguar Cars Ltd. reserves the right to amend specifications at any time without notice.

Printed in USA, by Jaylen Offset/67F3