

Bottom End, "XK" Six-Cylinder Engine, 1949-1987

1. Main Bearing Sets

3.4 & 3.8 Liter, Standard	01-1020.000
3.4 & 3.8 Liter, +.010"	01-1020.010
3.4 & 3.8 Liter, +.020"	01-1020.020
3.4 & 3.8 Liter, +.030"	01-1020.030
3.4 & 3.8 Liter, +.040"	01-1020.040
4.2 Liter, Standard	01-1030.000
4.2 Liter, +.010"	01-1030.010
4.2 Liter, +.020"	01-1030.020
4.2 Liter, +.030"	01-1030.030

2. Rod Bearing Sets

3.4, 3.8 & 4.2 Liter, Standard	01-1011.000
3.4, 3.8 & 4.2 Liter, +.010"	01-1011.010
3.4, 3.8 & 4.2 Liter, +.020"	01-1011.020
3.4, 3.8 & 4.2 Liter, +.030"	01-1011.030
3.4, 3.8 & 4.2 Liter, +.040"	01-1011.040

3. Thrust Washer Pairs

3.4, 3.8 & 4.2 Liter, Standard	01-1040PR
3.4, 3.8 & 4.2 Liter, +.004"	01-1050PR

4. Pin Bushing Sets

3.4, 3.8 & 4.2 Liter, set of six	01-1070
----------------------------------	---------

5. Piston Sets

3.4 Liter, 8:1 Compression, Standard Bore	01-1200.000
3.4 Liter, 8:1 Compression, +.020"	01-1200.020

3.4 Liter, 8:1 Compression, +.030"	01-1200.030
3.4 Liter, 8:1 Compression, +.040"	01-1200.040
3.4 Liter, 8:1 Compression, +.060"	01-1200.060
3.8 Liter, 8:1 Compression, Standard Bore	01-1210.000
3.8 Liter, 8:1 Compression, +.020"	01-1210.020
3.8 Liter, 8:1 Compression, +.030"	01-1210.030
3.8 Liter, 8:1 Compression, +.040"	01-1210.040
3.8 Liter, 9:1 Compression, Standard Bore	01-1220.000
3.8 Liter, 9:1 Compression, +.020"	01-1220.020
3.8 Liter, 9:1 Compression, +.030"	01-1220.030
3.8 Liter, 9:1 Compression, +.040"	01-1220.040
4.2 Liter, 8:1 Compression, Standard Bore	01-1230.000
4.2 Liter, 8:1 Compression, +.020"	01-1230.020
4.2 Liter, 8:1 Compression, +.030"	01-1230.030
4.2 Liter, 8:1 Compression, +.040"	01-1230.040
4.2 Liter, 9:1 Compression, Standard Bore	01-1240.000
4.2 Liter, 9:1 Compression, +.020"	01-1240.020
4.2 Liter, 9:1 Compression, +.030"	01-1240.030

Note: Pistons are sold as sets only, although we sometimes have individuals. Sets include rings, pins and circlips. Where AE pistons are obsolete, we have substituted other high-quality pistons.

6. Piston Pin Circlips, all, per each, always replace **C3964**



XK Engine



Bottom End, "XK" Six-Cylinder Engine, 1949-1987 (Continued)

6A. Piston Pin, 6 required _____ **C26629**

7. Deves Piston Ring Sets

3.4 liter with Brico pistons, 3 rings, all grooves 3.50mm deep:
 Standard Bore (83mm/3.268") _____ **01-1250B.000**
 +.020" _____ **01-1250B.020**
 +.030" _____ **01-1250B.030**
 +.040" _____ **01-1250B.040**
 +.060" _____ **01-1250B.060**

3.4 liter with older AE pistons, 3 rings (no fourth ring; modern rings are more efficient), top and 2nd grooves are 4.10mm deep and oil ring groove is 4.30mm deep:
 Standard Bore (83mm/3.268") _____ **01-1250.000**
 +.020" _____ **01-1250.020**
 +.030" _____ **01-1250.030**
 +.040" _____ **01-1250.040**
 +.060" _____ **01-1250.060**

3.4 liter as above but with *two* 4.30mm-deep oil rings for the purest:
 Standard Bore (83mm/3.268") _____ **01-1251.000**
 +.020" _____ **01-1251.020**
 +.030" _____ **01-1251.030**
 +.040" _____ **01-1251.040**
 +.060" _____ **01-1251.060**

3.4 liter with four-ring AE 11546 pistons; 1st & 2nd ring grooves are 3.60mm deep, 3rd & 4th (oil) ring grooves are 4.00mm:
 Standard Bore (83mm/3.268") _____ **01-1252.000**
 +.020" _____ **01-1252.020**
 +.030" _____ **01-1252.030**
 +.040" _____ **01-1252.040**
 +.060" _____ **01-1252.060**

3.8 Liter with AE 18393 8:1 compression pistons:
 Standard Bore (87mm/3.425") _____ **01-1260.000**
 +.020" _____ **01-1260.020**
 +.030" _____ **01-1260.030**
 +.040" _____ **01-1260.040**
 +.060" _____ **01-1260.060**

3.8 Liter with AE 18394 or AE 20615 9:1 pistons, 1st & 2nd ring grooves are 3.70mm; 3rd (oil) ring groove is 3.80mm deep.
 Standard Bore (87mm/3.425") _____ **01-1261.000**
 +.020" _____ **01-1261.020**
 +.030" _____ **01-1261.030**
 +.040" _____ **01-1261.040**
 +.060" _____ **01-1261.060**

4.2 Liter with AE 18395 or 19885 long-skirt pistons. Top & 2nd ring grooves are 4.70mm deep; 3rd ring groove is 5.00mm deep.
 Standard Bore (3.625") _____ **01-1270.000**
 +.020" _____ **01-1270.020**
 +.030" _____ **01-1270.030**
 +.040" _____ **01-1270.040**

4.2 Liter with short-skirt AE 21379 or 21380 pistons. Top ring groove is 4.60mm deep; 2nd is 5.00mm deep; 3rd ring is 4.50mm.
 Standard Bore (3.625") _____ **01-1271.000**
 +.020" _____ **01-1271.020**
 +.030" _____ **01-1271.030**
 +.040" _____ **01-1271.040**

Note: Deves rings are made from the finest Swedish steel.

8. Rod Bolts, 12 required _____ **C32344**

9. Rod Nuts, 12 required _____ **JA-EAC5541**

Note: We highly recommend these updated rod bolts and nuts. They are USA-made and far superior to the original parts. They do not use cotter pins or castle nuts.

10. Reconditioned Connecting Rods, set of six _____ **20-1667**

Note: Rods are cleaned and wet-magnfluxed. We re-size the big end and replace the pin bushings. Bolts and nuts are replaced with ARP parts, then rods are balanced. Sold in sets only. A core charge applies. We sell only the "wide-beam" XJ-6 rods which can be used in all six-cylinder applications. **One tech note:** Never grind the reinforcing ribs on the bottom of the rod as a means to balance it! This compromises the structural integrity of the rod.

11. Lock Tab, Crankshaft:
3.4 & 3.8 Liter (flat) _____ **C2467**

4.2 E-Type, MK X/420G, 420, XJ-6 Series I to engine 7L.42494 (1/4" deep) _____ **C23158**

XJ-6 Series I from engine 7L.42495-on, Series II and III XJ-6 (1/2" deep) _____ **C29713**

12. Crankshaft Pulleys
XK-120 _____ **C2469**

XK-140; MK VII; 3.4 Liter XK-150 engines V1001 to V5732, and VS1001 to VS1522; MK I engines KE1001 to KE 9999 and KF1001 to KF2500 _____ **C7275**

MK IX, 3.4 Liter XK-150 engines V5732-on and VS1522-on; all 3.8 XK-150; MK I engines KF2501-on; 3.8 E-Type to engine R1458. _____ **C14589**

MK II with single-groove belt; 3.8 E-Type with single-groove belt engine R1459 to R5249 _____ **C18703**

MK II with double-groove belt; 3.4S, 3.8S; 3.8 E-Type with double-groove belt, engine R5250-on _____ **C19517**

4.2 Series I E-Type _____ **C24289**

Series II E-Type (Drives A/C Belt), Series I, II & III XJ-6 (Drives Water Pump Belt) _____ **C23131**

13. Rebuilt Crankshaft Dampers
3.4 and 3.8 Liter _____ **01-0100**

4.2 Liter, early, timing indexed from bottom (used on E-Types up to December 1968, engine numbers 7R.1346 and 7R.35089, timing pointer attached to sump.) _____ **01-0101**

4.2 Liter, from above numbers, timing indexed from top; pointer mounted on timing cover. _____ **01-0102**

Note: Crank dampers are rebuilt using high-temp silicone rubber to better-than-new standards and tolerances.

14. Damper Cone _____ **C2466**

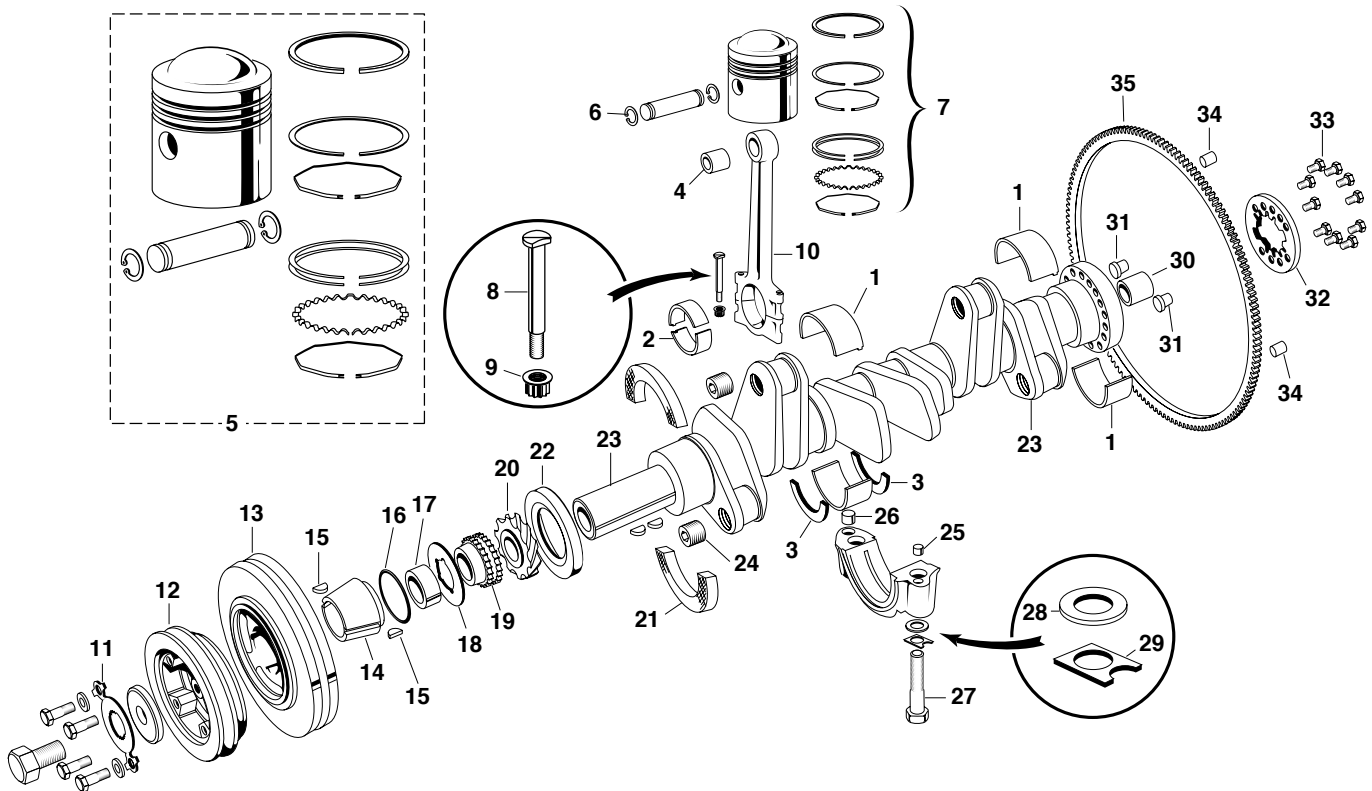
15. Woodruff Key, four required _____ **C757**

16. O-Ring, on Spacer _____ **JA-EAC8101**

17. Spacer, accommodates O-ring, not included _____ **C40147**

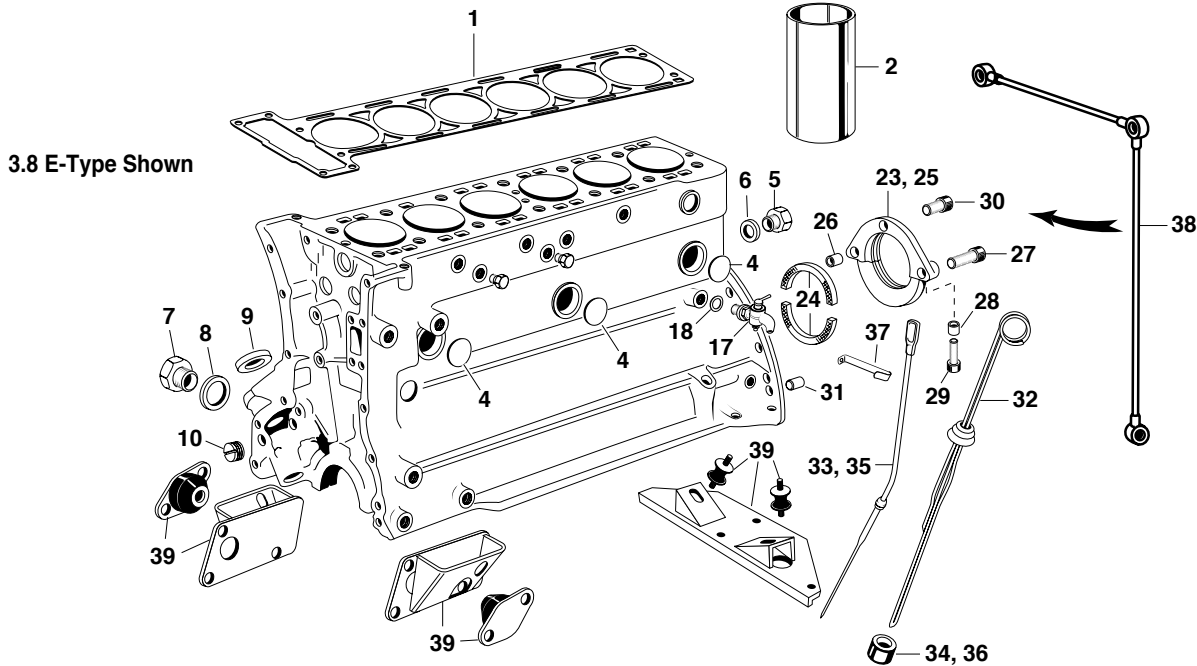
18. Oil Slinger (NLS) _____ **C23701**

Engine Bottom End Continued on next page.



Bottom End, "XK" Six-Cylinder Engine, 1949-1987 (Continued)

- | | | | |
|---|------------|--|---------------------|
| 19. Timing Chain Drive Gear _____ | C2170 | 24. Crankshaft Plugs:
3.4 and 3.8 Liter, six required, always replace _____ | C4283 |
| 20. Distributor/Oil Pump Drive Gear _____ | C2314 | 4.2 Liter, six required, always replace _____ | C23761 |
| Note: For other oil pump items, see pages 128 & 129. | | 25. Dowel, Small, Locating Bearing Cap, 7 req'd _____ | C13479 |
| 21. Crankshaft Rope Seal, all XK-120; XK-140 to engine G.1907;
all MK VII A- and B-series engines plus D-series to 6722.
Two required. _____ | C2306 | 26. Dowel, Large, Locating Bearing Cap, 7 req'd _____ | C19340 |
| Note: These seals are not included with gasket sets; must be
purchased separately. | | 27. Bolt, Main Bearing Caps, 14 required _____ | C2262 |
| 22. Crankshaft Seal, standard type, all later cars ____ | JA-EAC4219 | Note: For ARP competition bolts see page 90. | |
| 22. Updated Teflon Crankshaft Seal. This seal <i>won't</i> leak. Can be
fitted to all 6-cylinder engines that do not use the rope front
seal. Highly recommended. _____ | JA-10527 | 28. Washer, Main Bearing Cap Bolts _____ | C28082 |
| Note: Jaguar recommends fitment of C40147 spacer and JA-
EAC8101 o-ring when updating to the Teflon seal. We feel this is
not absolutely necessary. However, the oil slinger must be
removed as this seal must be kept wet. JA-10527 includes the
Teflon seal plus the rear crank rope seals, rear sump rubber seal,
oil pump o-rings, and relief-tube-to-sump o-ring. | | 29. Lock Tab, Main Bearing Cap Bolts _____ | C21171 |
| 23. Reconditioned crankshaft, 3.4 & 3.8 Liter _____ | 20-1555 | Note: We recommend the C28082 washers over the lock tabs.
Either way, both items are one-time-use only. | |
| Reconditioned cranksaft, 4.2 Liter _____ | 20-1666 | 30. Pilot Bushing, always replace _____ | C2226 |
| Note: We replace oil plugs, hot tank and clean, de-rust (if
required), wet-mag and crack check, check straightness and
straighten if necessary, turn rod and main journals to maximum of
.030"/.030" undersize, chamfer oil holes, micro-polish rod and main
bearing journals, finish-clean and balance if required/requested,
with or without flywheel, pressure plate and damper. | | 31. Flywheel Dowels, two required _____ | C2313 |
| | | 32. Flywheel Lock Plate (always replace) _____ | C4810 |
| | | 33. Flywheel Bolts:
All up to Series III engine 8L109585, 10 required _____ | C4855 |
| | | Series III XJ-6 from engine 8L109586 _____ | C6839 |
| | | Note: Please see automatic transmission section for updated XJ-6
Series III flexplates and related hardware. | |
| | | 34. Clutch Dowel, 1/4" x 1/2" _____ | C8631 |
| | | Clutch Dowel, 5/16" _____ | C1782 |
| | | 35. Flywheel ring gears and flywheels _____ | Please see page 181 |



Block Hardware, "XK" Six-Cylinder Engine, 1949-1987

1. Head Gasket _____ Please See Pages 152 & 153
2. Cylinder Sleeves, sold per each:
 - 3.4 Liter _____ 01-1280
 - 3.8 Liter _____ 01-1290
 - 4.2 Liter _____ 01-1300

3. **Cylinder Head Studs, 14 required per engine:**
3.4, 3.8 and 4.2 without engine lifting brackets:

(XK-120, XK-140, XK-150, MK VII, MK VIII, MK IX, earlier 3.4- and 3.8-Liter MK I and II, earlier 3.4S and 3.8S, 3.8-Liter E-Type, MK X 3.8 to engine ZB3112, 4.2 MK X to engine 7D50030):

- Thirteen required (6-3/8") _____ C2269
- One required (6-3/8" with alignment dowel) _____ C2270

Later 3.4, 3.8 and 4.2 with engine lifting brackets:

(Later 3.4- and 3.8-Liter MK II, later 3.4S and 3.8S, E-Type Series I 4.2, E-Type Series II 2+2 to engine &R35388, E-Type Series II OTS and FHC to engine 7R1914, XJ-6 Series I to engine 7L1175, MK X 3.8 from engine ZB3113, MK X 4.2 from engine 7D50031):

- Ten required (6-3/8") _____ C2269
- Three required (6-13/16") _____ C23609
- One required (6-13/16" with alignment dowel) _____ C23610

E-Type Series II from engine 7R35389, E-Type Series II FHC and OTS from engine 7R1915, XJ-6 Series I engine 7L.1176 to 7L.55968:

- Six Required (12-11/16") _____ C29033
- Three required (12-15/16") _____ C29034

- Four required (6-7/16") _____ C2269
 - One required (13" with dowel) _____ C29032
- XJ-6 Series I, Engine 7L.55969-7L.66597**
- Five Required (12-11/16") _____ C29033
 - Four Required (12-15/16" _____ C38073
 - Four required (6-7/16") _____ C2269
 - One required (12-5/8" with dowel) _____ C38072

XJ-6 Series I, Engine 7L.66597-on; all Series II & Series III

- Seven required (12-11/16") _____ C29033
- Three required (12-15/16") _____ C38073
- Three required (6-7/16") _____ C2269
- One required (6-5/8" with Dowel) _____ C42355

Note: For ARP competition cylinder head studs, see page 90.

4. **Engine Block Core Plugs:**

3.4 & 3.8 Liter:

- Seven required _____ C315
- One required _____ C317

4.2 E-Type up to Series II engines 7R1915 & 7R35389;

4.2 Liter MK X, 420, 420G:

- One required _____ C16862-2
- Six required _____ C16862-8

Series II E-Type from engines 7R1916 & 7R35390:

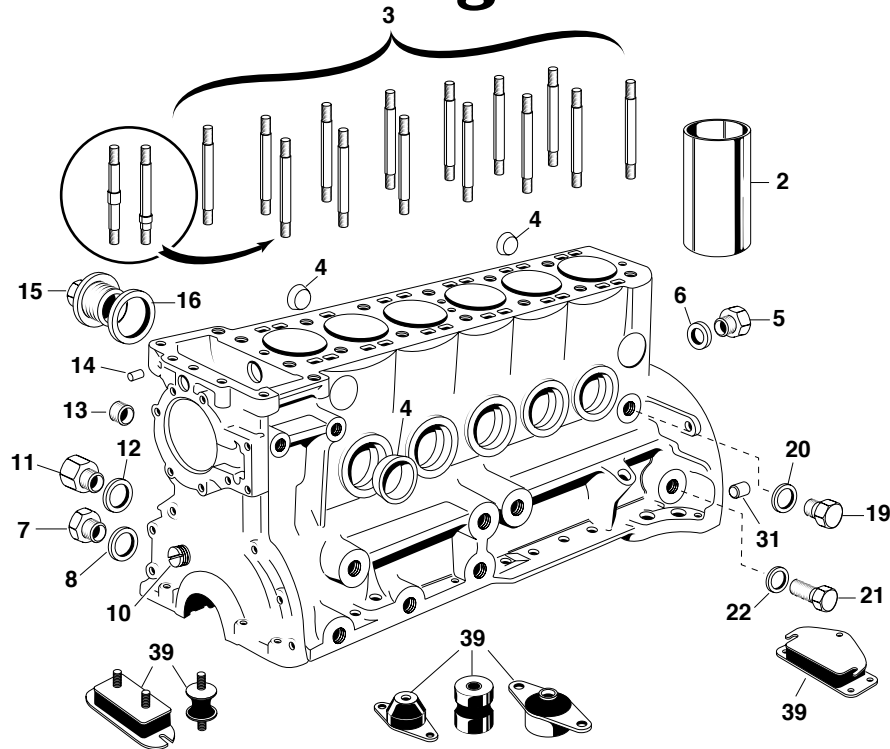
- One required _____ C16862-2
- Nine required _____ C16862-8

XJ-6 Series I to engine 7L1176:

- Two required _____ C16862-5
- One required _____ C16862-1
- Six required _____ C16862-8

Engine Block Core Plugs continued on next page

4.2 E-Type Shown

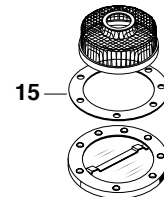
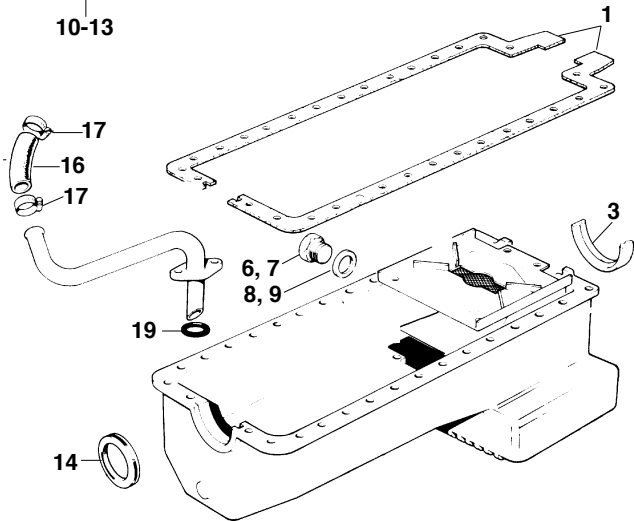
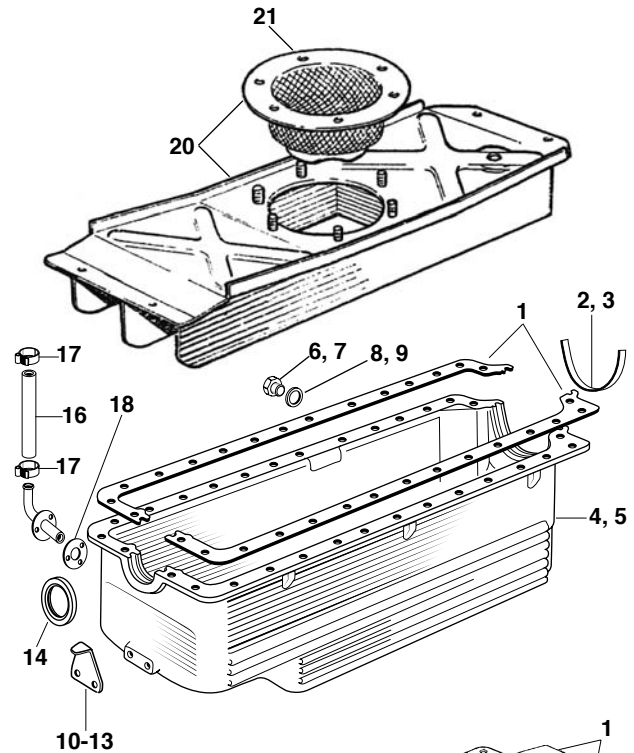


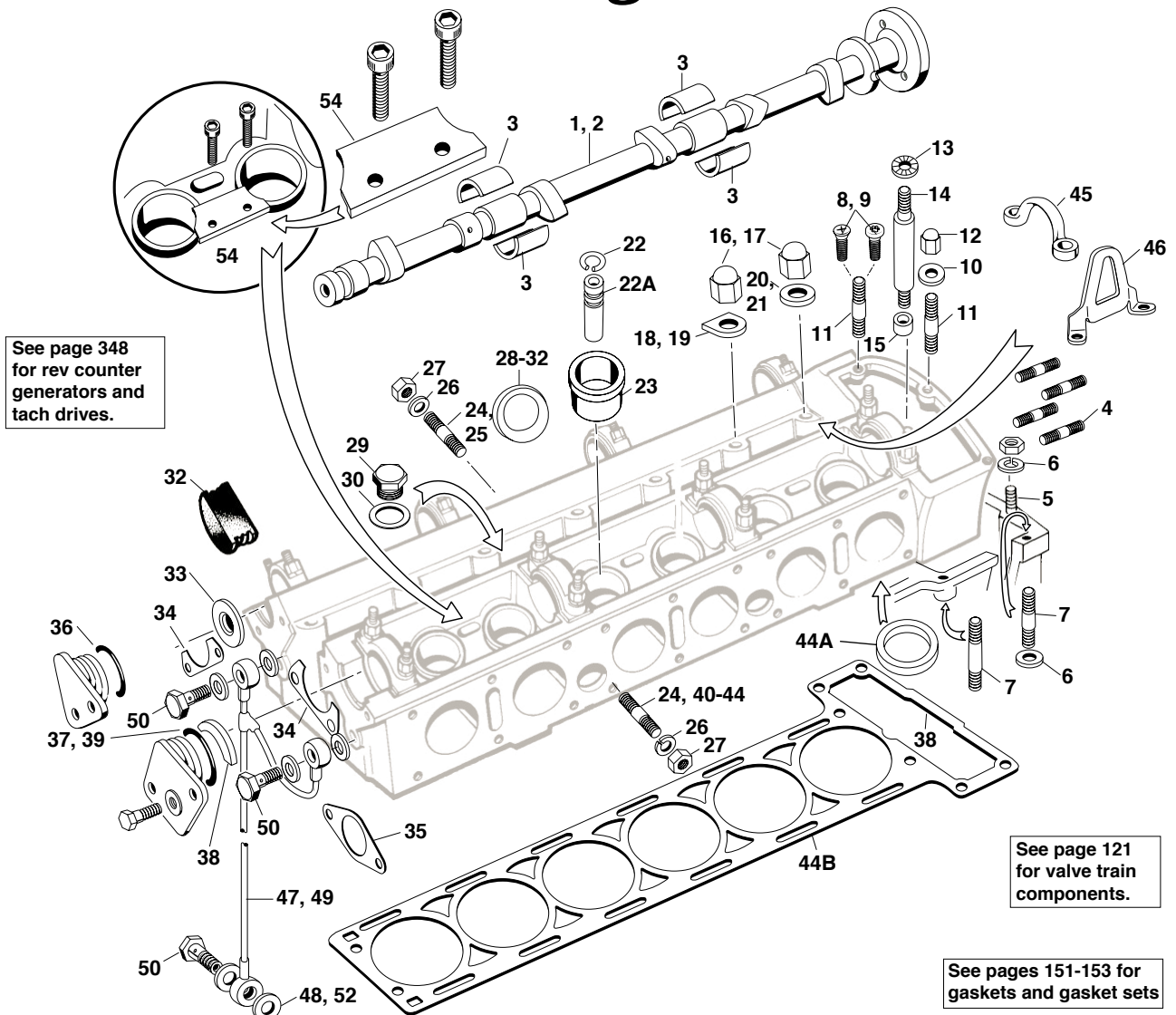
Block Hardware, "XK" Six-Cylinder Engine, 1949-1987

- | | |
|---|---|
| 4. Engine Block Core Plugs (continued):
XJ-6 Series I from 7L1177, all Series II and III XJ-6:
Two required _____ C16862-5
Nine required _____ C16862-8
XJ-6 Series III to engine 8L.89108:
One required _____ C16862-2
XJ-6 Series III from engine 8L.89109:
One required _____ C16862-3 | 23. Seal Retainer _____ C19687 |
| 5. Oil Gallery Bolt, all, one required _____ C2157 | 24. Rope Seals, 1962-on, two req'd, per each _____ C19654
<i>Note: Earlier engines did not have a rear crankshaft seal.</i> |
| 6. Copper Washer, on Oil Gallery Bolt, all _____ C2296-2 | 25. Seal Retainer Retrofit Kit _____ 01-1500
<i>Note: This bolt-on kit contains all items necessary to install a later seal retainer and rear seals to an early engine.</i> |
| 7. Bolt, five required for 3.4 & 3.8, six for 4.2 _____ C2352 | 26. Dowel, on Seal Retainer, 2 required _____ C2394 |
| 8. Copper Washer, for C2352 bolt _____ C2296-3 | 27. Cap Screw, on outer edges of retainer, 2 req'd _____ C42302/6 |
| 9. Distributor Sealing Ring, Cork (see previous page) _____ C2430 | 28. Dowel, on Seal Retainer, 2 required _____ C2394 |
| 10. Front Plug (allen head type, will fit earlier cars) _____ C44034 | 29. Cap Screw, securing halves of retainer, 2 req'd _____ C42348-6 |
| 11. Adaptor, Oil Pressure Warning Light Sender _____ C22491 | 30. Cap Screw, at top of retainer, 1 req'd _____ C42302-4 |
| 12. Washer for Adaptor, 1/2" Copper _____ C2296-3 | 31. Dowel, Locating Bell Housing on Block _____ C13478 |
| 13. Plug, oil filter flange _____ C15867 | 32. Oil Dipsticks:
XK-120 _____ C2348
XK-140, engine G1908-on _____ C8781
XK-150, to engines V5059 & VS1303 _____ C13277
XK-150, engines V5060-on and VS1304-on _____ C8781 |
| 14. Stud, Locating Timing Cover on Block _____ C13479 | 33. Oil Dipstick, Series I E-Type _____ C21251
Series II E-Type _____ C30112 |
| 15. Plug, block heater _____ C32276 | 34. Seal, Felt, for above dipsticks _____ 01-0001 |
| 16. Copper Washer, block heater plug _____ C2296-16 | 35. Oil Dipstick, XJ-6 Series I, II and III _____ JA-EAC6713 |
| 17. Pet Cock, Coolant Drain, early engines _____ C2354 | 36. Dipstick Seal, XJ-6 Series I, II and III _____ C42705 |
| 18. Fiber Washer, with Pet Cock, as required for alignment _____ C316 | 37. Dipstick Bracket, Series I and II E-Type _____ C15848
(Not for Series II with wire-type bracket.) |
| 19. Drain Bolt, later engines without Pet Cock _____ C31616 | 38. Cam Oil Line, XK-120 engines W.1001 to W.4019 and MK VII
A.1001 to A.4940 (requires six C2296-4 copper washers or
17-2000 upgraded Stat-o-Seals) _____ C2333 |
| 20. Copper Washer, used with Pet Cock or Bolt _____ C2296-3 | <i>Note: See page 120 for later Cam Oil Lines.</i> |
| 21. Banjo Bolt, Cam Oil Line, three required _____ C5846 | 39. For Engine and Transmission Mounts _____ See pages 145-146 |
| 22. Copper Washer, Cam Oil Line, three required _____ C4146
Upgraded Oil Line Washer, with internal seal _____ 17-2000 | |

Oil Sump, "XK" Six-Cylinder Engine, 1949-1987

1. Oil Sump Gasket, Pair _____ C19590PR
2. Rear Strip Gasket, Cork, 3.4 & 3.8 Liter _____ C2302
3. Rear Strip Gasket, Rubber, 4.2 Liter _____ C36499
4. Alloy Oil Pan, 3.8 E-Type _____ C16750
5. Alloy Oil Pan, 4.2 E-Type _____ C24457
6. Drain Plug, standard _____ C23435
7. Drain Plug, oversize, for repaired pans _____ C23435/1
8. Drain Plug Washer, Standard, Copper _____ C2296-1
9. Drain Plug Washer, Upgraded, With Internal Seal ____ 17-1998
10. Ignition Timing Pointer, XK-140, XK-150, Later MK VII, MK VIII, MK IX, Later MK I, MK II with steel sump ____ C8240
11. Ignition Timing Pointer, 3.8 E-Type, 340, MK II with alloy sump, 3.4S/3.8S _____ C16758
12. Ignition Timing Pointer, 4.2 E-Type, 420, 420G, 4.2 MK X _____ C23228
13. Ignition Timing Pointer, XJ-6 Series I, II and III _____ C29369
14. Front Seal _____ See Page 38
15. Gasket, Oil Filter Basket, MK I & II _____ C9173
16. Hose, Oil Bypass, all _____ C15949
17. Clamp, on oil by-pass hose, two required _____ 09-BS/25
18. Gasket, By-pass Fitting on Sump, E-Types _____ C16756
19. O-Ring, By-pass Fitting on Sump, Sedans _____ JA-EAC8840
20. Baffle Assembly, six-cylinder E-Types _____ C16741
21. Strainer Only, six-cylinder E-Types _____ C16752
22. **Alloy Catch Tank.** Keep your restored XK looking new! XKs vent engine vapors through a tube at the front of the engine directly to the ground. Over time, oil vapor collects on the underside of the car with only one place to go: the driveway. This tank is hand-crafted in alloy; it mounts on the inner fender well without looking out of place. Tank comes with a fitting to which the stock engine vent tube attaches. _____ 17-1401





Cylinder Head, "XK" Six-Cylinder Engine, 1949-1987

Description	Part No.	Qty. Req'd.
1. Reconditioned Camshafts, suitable for all models to 1967: Exhaust (Sold Exchange Only) _____	C13081	1
2. Intake (Sold Exchange Only) _____	C14985	1
Note: For cam gears and other timing components, see page 124. For high-performance cams, see pages 84 & 85.		
3. Cam Bearings, engine set _____	01-1060	1
4. Stud, Cylinder Head to Breather Cover _____	C6727	4
Note: See pages 126 & 127 for additional breather components.		
5. Stud, Cylinder Head to Timing Cover _____	C2183	2
6. Washer, Timing Cover Stud _____	JA-FW105-E	2
7. Stud, Cylinder Head to Timing Cover _____	C2189	4
6. Copper Sealing Washer on Stud, 5/16" _____	JA-FW105-E	4
8. Pozzi Machine Screw, Cam Cover, 1970-on (countersunk screw head design) _____	JA-UCS.025/6H	
9. Torx Machine Screw, Cam Cover, 1970-on (non-countersunk screw head design) _____	C42326/4	2
Note: Later cars fitted with machine screws at top front of cam covers require two fewer of numbers 10 and 12.		
10. Washer, Copper, Cam Cover Dome Nuts _____	JA-FW104-E	22

Description	Part No.	Qty. Req'd.
11. Stud, Cylinder Head to Cam Cover _____	C6727-2	6
12. Dome Nut, Chrome, Cam Covers _____	C2327	22
13. Washer, Cam Bearing Cap, dished & serrated _____	C30075-2	16
14. Stud, Cam Bearing Cap _____	C2326	16
15. Locating Ring, on Studs _____	JA-EBC9705	16
16. Cylinder Head Dome Nut, Chrome _____	C2328	14
17. Cylinder Head Dome Nut, Zinc _____	JA-EAC3369	14
Note: Jaguar began fitting zinc-plated nuts in about 1969. They can be retrofitted to chrome if desired.		
18. "D" Washer, Cylinder Head Nut, Chrome _____	C2385	A/R
19. "D" Washer, Cylinder Head Nut, Stainless _____	C2385SS	A/R
20. Round Washer, Chrome _____	C10301/C	A/R
21. Round Washer, Zinc Plated _____	C10301	A/R
Note: On earlier cars, round washers are generally used at the two front-most studs, and under engine lifting and spark plug conduit brackets. "D" washers are used on the remaining studs. Jaguar went to all round washers in the late sixties.		
22. Valve Guide Clip _____	JA-EBC1782	12
22A. Valve Guide _____	See page 13	
23. Tappet Guide, machine to fit _____	C7262	12



XK Engine



Cylinder Head, "XK" Six-Cylinder Engine, 1949-1987

Description	Part No.	Qty.	Req'd.
24. Exhaust Manifold Stud, 1-5/8" long	C11761		A/R
25. Exhaust Manifold Stud, 1-3/8" long	C2325		A/R
Note: The longer studs are generally used where various brackets, such as for heat shields, are fitted.			
26. Lock Washer, Manifold Studs	JA-FG105X	16	
27. Brass Nut, Exhaust Manifold Studs	07-1010	16	

Description	Part No.	Qty.	Req'd.
50. Banjo Bolt, Cam Oil Line	C5846		3
51. Banjo Bolt, longer type for stripped threads	C5846-1		A/R
52. Washer, Cam Oil Line, Standard Type	C4146		6
53. Updated Washer with integral rubber seal	17-2000		6

Cylinder Head Core/Freeze Plugs:

(XK-120, XK-140, XK-150, MK VII, MK VIII, MK IX, MK I, MK II, 3.4S, 3.8S, Series I E-Type, MK X 3.8 & 4.2, 420, 420G, XJ-6 Series I, XJ-6 Series II to Engine 8L.36621)

28. Dished Plug	C317		2
29. Bolt, 7/8" (Hex head, allen type not available)	C2157		3
30. Washers for bolts	C2296-2		3

XJ-6 Series II from engine 8L.36621; XJ-6 Series III to VIN 337430 (about 1982-1/2)

28. Dished Freeze/Core Plug	C317		2
31. Dished Freeze/Core Plug	C16862-2		3

XJ-6 Series III from VIN 337431

31. Dished Freeze/Core Plug	C16862-2		5
32. "D" Sealing Plug, Later S. II XJ-6, all Ser. III	C39195		2
33. Oil Thrower, on Camshaft(s) (NLS)	C2324		A/R

Note: The oil thrower was fitted through Series I XJ-6.

34. Gasket, XK-120, XK-140, MK VII	C2289		2
35. Gasket, XK-150 w/ cable-driven tach	C10667		1
36. O-Ring, all with cable-driven tachometer	C2312		2

Note: One fitted to each cam. Only one required on exhaust cam for tachometer generator-equipped XK-150, MK I, MK II, MK IX and 3.8 E-Type to engine R.2599.

37. O-Ring, from above cars to early S. II XJ-6	C19044		1
38. Seal, Intake Camshaft	C14991		1
39. O-Ring, Intake Camshaft	C14990		1

Note: C14991 & C14990 fitted to all cars with tachometer generator and up to early XJ-6 Series II prior to fitment of "D" plug.

24. Intake Manifold Stud, 1-5/8" long	C11761		A/R
40. Intake Manifold Stud, 1-1/2" long	C32775		A/R

Note: Above numbers are for all post XK-120/140 and MK VII. See the relevant factory parts manual for quantities required.

Intake Manifold Studs, XK-120:

41. Through Water Outlet (top front two)	C2374		2
42. Carburetor Attachment	C11768		8
43. All Remaining Locations	C11763		8

Intake Manifold Studs, XK-140:

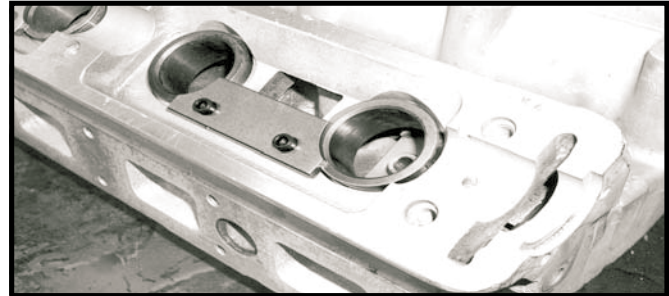
44. Top Front	C11771		1
42. Carburetor Attachment	C11768		8
40. Bottom Rear Two	C32775		2
43. All Remaining Locations	C11763		7

Note: For MK VII, call with engine number and desired location(s).

26. Lock Washer, Intake Manifold Studs	JA-FG105X		18
27. Nut, Intake Manifold Studs	07-1010		18
44A. Valve Seat	See Page 122		
44B. Head Gaskets and Gasket Sets	See Page 152		
45. Engine Lifting Bracket, early alloy type	C23607		2
46. Engine Lifting Bracket, later steel type (NLS)	C37851		2
47. Cam Oil Pipe, XK-120 to engine W.4019	C2333		1
48. Washer, early XK-120 oil pipe	C2296-4		6

Cam Oil Pipes, Later Type:

47. XK-120 engine W.4020-on thru Series II XJ-6	C25619		1
49. Series III XJ-6	JA-EAC2430		1

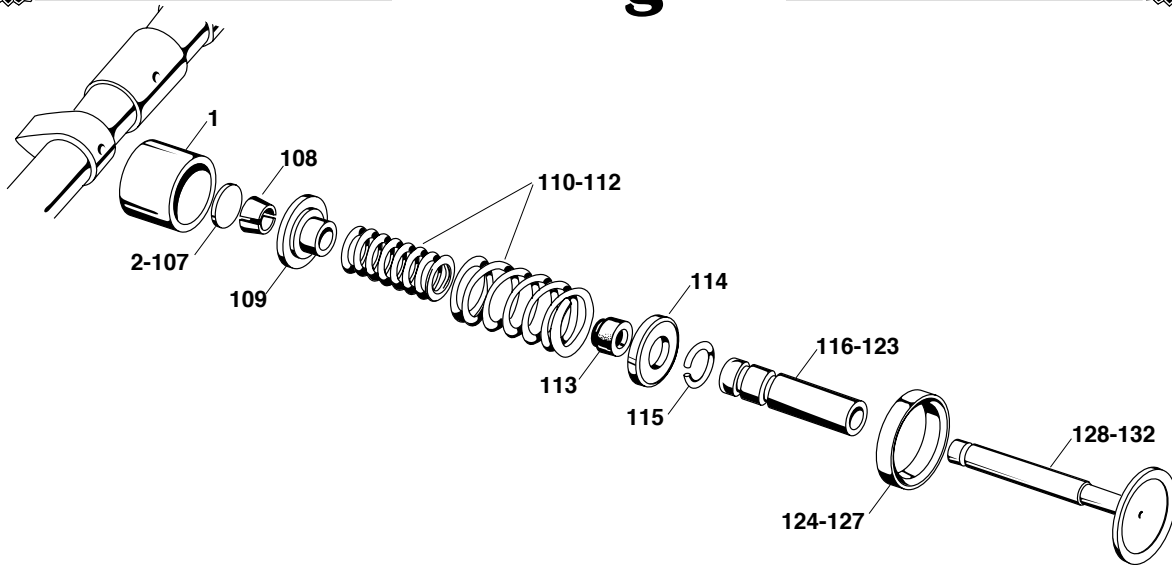


54. Tappet Guide Hold-Down Kit			17-1580
--------------------------------	--	--	---------

Note: The Jaguar "XK" engine has few chronic problems (maybe that's why it was used for more than 35 years . . .) but one might be the tendency for tappet guides to work their way out of the cylinder head and hit the cam shafts. This is noisy and very expensive. We can't solve the problem, but our tappet guide hold-down kit certainly prevents it. The kit consist of six metal plates (plus bolts) that are bolted to the cylinder head. Grooves in each plate overlap the tappet guides, holding them firmly in place. Simple and effective prevention. We fit this kit to virtually every cylinder head rebuilt in our shop. Installation is simple and requires a drill and a 10-24 tap and can be done with the head and cams installed. Highly recommended.

XK-120, XK-140, XK-150 MK VII, VIII, and IX MK I and MK II: 3.4 and 3.8 Lite Earlier 3.4S, 3.8 E-Type Series I 3.8 Liter MK 10: 3.8 Liter To Engine ZB511 MK 10: 4.2 Liter To Engine 7D50030	6-3/8," 13 Required C2269	6-3/18 with Dowel," 1 Required C2270	
Later MK II, 340, 3.4S, 3.8 E-Type Series I 2+ E-Type Series I 4.2 Lite E-Type Series II 2+2 To Engine 7R3538 E-Type Series II Roadster & FHC To Engine 7R191 XJ-6, 4.2 Series I, To Eng. 7L117 Mark 10 3.8 Liter From Eng. ZB5113 Mark 10 4.2 Liter From Eng. 7D50031	6-3/8," 10 Required C2269	6-13/16," 3 Required C23609 6-13/16" with Dowel, 1 Required C23610	For Engines With Lifting Brackets
E-Type Series II 2+2 From Engine 7R35389 E-Type Series II Roadster & FHC, From Engine 7R.1915 XJ-6, 4.2 Liter Series I, From Engine 7L.1176 to 7L.55968	12-11/16," 6 Required C29033	12-15/16," 3 Required C29034 6-7/16," 4 Required C29035	13," with Dowel, 1 Required C29032
XJ-6, 4.2 Liter Series I From Engine 7L.55969 to 7L.66597	12-11/16," 5 Required C29033	12-15/16," 4 Required C38073	6-7/16," 4 Required C2369
XJ-6, 4.2 Liter Series I, From Engine 7L.66597-on XJ-6, all 4.2-liter Series II and Series III	12-11/16," 7 Required C29033	12-15/16," 3 Required C38073	6-7/16," 3 Required C29035
"XJ-40" XJ-6 1988-1994 3.6-liter to Engine 143668 3.6 and 4-liter from Engine 143669	14 Bolts Require JA-EAC4744	14 Bolts Require JA-EAC1771	

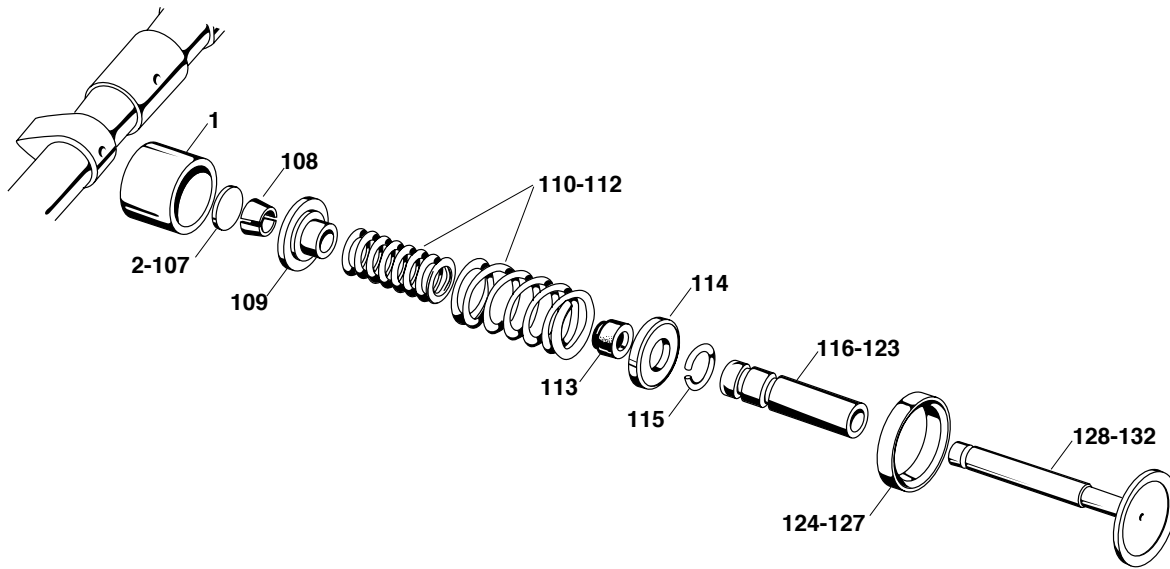
XKs UNLIMITED provides complete cylinder head rebuild services; see XKs Unlimited Performance & Accessory Collection page 86.



Valve Train, "XK" Six-Cylinder Engine, 1949-1987

Description	Part No.	Qty. Req'd.	Size	Part No.	Size	Part No.		
1. Tappet/Cam Follower	C44010	12						
1. Tappet/Cam Follower, .020" Oversize	C44010/OS	12						
Adjusting Shims, use as required:								
	Size	Part No.		Size	Part No.			
2.	.085"	C2243A	27.	.110"	C2243Z			
3.	.086"	C2243B	28.	.111"	C2243.111			
4.	.087"	C2243C	29.	.112"	C2243.112			
5.	.088"	C2243D	30.	.113"	C2243.113			
6.	.089"	C2243E	31.	.114"	C2243.114			
7.	.090"	C2243F	32.	.115"	C2243.115			
8.	.091"	C2243G	33.	.116"	C2243.116			
9.	.092"	C2243H	34.	.117"	C2243.117			
10.	.093"	C2243I	35.	.118"	C2243.118			
11.	.094"	C2243J	36.	.119"	C2243.119			
12.	.095"	C2243K	37.	.120"	C2243.120			
13.	.096"	C2243L	38.	.121"	C2243.121			
14.	.097"	C2243M	39.	.122"	C2243.122			
15.	.098"	C2243N	40.	.123"	C2243.123			
16.	.099"	C2243O	41.	.124"	C2243.124			
17.	.100"	C2243P	42.	.125"	C2243.125			
18.	.101"	C2243Q	43.	.126"	C2243.126			
19.	.102"	C2243R	44.	.127"	C2243.127			
20.	.103"	C2243S	45.	.128"	C2243.128			
21.	.104"	C2243T	46.	.129"	C2243.129			
22.	.105"	C2243U	47.	.130"	C2243.130			
23.	.106"	C2243V	48.	.131"	C2243.131			
24.	.107"	C2243W	49.	.132"	C2243.132			
25.	.108"	C2243X	50.	.133"	C2243.133			
26.	.109"	C2243Y	51.	.134"	C2243.134			
			52.	.135"	C2243.135	80.	.163"	C2243.163
			53.	.136"	C2243.136	81.	.164"	C2243.164
			54.	.137"	C2243.137	82.	.165"	C2243.165
			55.	.138"	C2243.138	83.	.166"	C2243.166
			56.	.139"	C2243.139	84.	.167"	C2243.167
			57.	.140"	C2243.140	85.	.168"	C2243.168
			58.	.141"	C2243.141	86.	.169"	C2243.169
			59.	.142"	C2243.142	87.	.170"	C2243.170
			60.	.143"	C2243.143	88.	.171"	C2243.171
			61.	.144"	C2243.144	89.	.172"	C2243.172
			62.	.145"	C2243.145	90.	.173"	C2243.173
			63.	.146"	C2243.146	91.	.174"	C2243.174
			64.	.147"	C2243.147	92.	.175"	C2243.175
			65.	.148"	C2243.148	93.	.176"	C2243.176
			66.	.149"	C2243.149	94.	.177"	C2243.177
			67.	.150"	C2243.150	95.	.178"	C2243.178
			68.	.151"	C2243.151	96.	.179"	C2243.179
			69.	.152"	C2243.152	97.	.180"	C2243.180
			70.	.153"	C2243.153	98.	.181"	C2243.181
			71.	.154"	C2243.154	99.	.182"	C2243.182
			72.	.155"	C2243.155	100.	.183"	C2243.183
			73.	.156"	C2243.156	101.	.184"	C2243.184
			74.	.157"	C2243.157	102.	.185"	C2243.185
			75.	.158"	C2243.158	103.	.186"	C2243.186
			76.	.159"	C2243.159	104.	.187"	C2243.187
			77.	.160"	C2243.160	105.	.188"	C2243.188
			78.	.161"	C2243.161	106.	.189"	C2243.189
			79.	.162"	C2243.162	107.	.190"	C2243.190

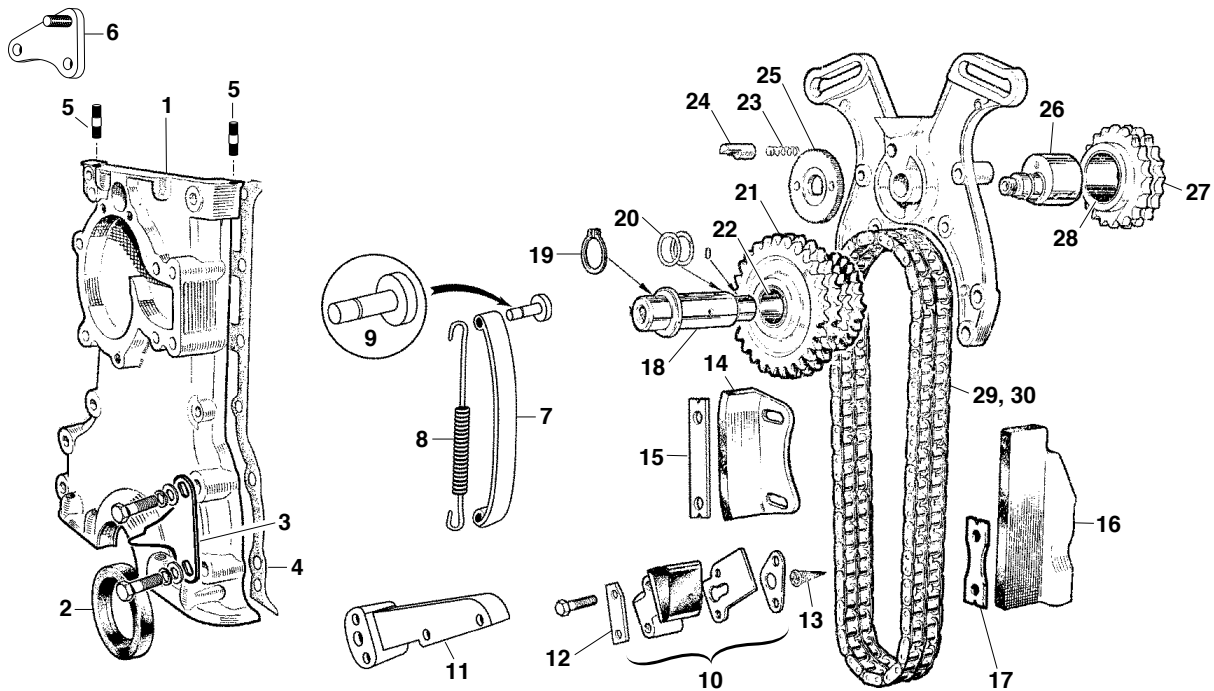
Engine



Valve Train, "XK" Six-Cylinder Engine, 1949-1987

Description	Part No.	Qty. Req'd.	Description	Part No.	Qty. Req'd.
108. Keepers, sold per each _____	JA-EBC2997	24	Valve Seats, Intake:		
109. Spring Retainer/Collar _____	C27480	12	124. 1-3/4" (all but fuel injected XJ-6) _____	01-3230	6
110. Valve Spring Set, standard _____	01-3130	1	125. 1-7/8" (fuel injected XJ-6 only) _____	01-3235	6
111. Valve Spring Set, heavy duty _____	01-3140	1	Valve Seats, Exhaust:		
112. Valve Spring Set, racing _____	17-1589-6	1	126. 1-7/16" (XK-120, XK-140, MK VII with standard head) _____	01-3220	6
113. Valve Stem Seal (intake side only) _____	JA-EBC3531	6	127. 1-5/8" (XK-120, XK-140 and MK VII with "C" cylinder head, plus all other six cylinder) _____	01-3240	6
114. Spring Seat _____	C27481	12	Note: We stock world-class-quality valve seats that are 35-40 R _c hardness and appropriate for unleaded fuels. Part 01-3230 is a 45° seat. When used on XK-120, 140 and MK VII with 30° valves, new 45° valves (part 01-3040) must be ordered.		
Note: Keepers, Retainers and Spring Seats are later "short style" that accommodate valve stem seals. When retrofitting stem seals to a pre-1969 car, all three components must be replaced. New valve guides, which are grooved to accept a seal, must also be used. Stem seals are not included in pre- 1969-application head gasket sets.			Intake Valves:		
115. Valve Guide Retaining Clip _____	JA-EBC1782	12	128. XK-120, 140, MK VII, 1-3/4", 30° seat angle _____	01-3030	
Note: Clips were not fitted to early engines.			129. All other carburetted cars, 1-3/4", 45° seat angle _____	01-3040	
Valve Guides:			130. Fuel injected Series II & III XJ-6, 1-7/8" _____	01-3050	
116. Intake, Standard (.502" o.d.) _____	01-3080	A/R	Exhaust Valves:		
117. Intake, .002" oversize (.504" o.d.) _____	01-3080.002	A/R	131. XK-120, XK-140, MK VII standard head, 1-7/16" _____	01-3010	
118. Intake, .005" oversize (.507" o.d.) _____	01-3080.005	A/R	132. All other six cylinder, 1-5/8" _____	01-3020	
119. Intake, .008" oversize (.510" o.d.) _____	01-3080.008	A/R	Note: 01-3030 is for original 30° seats; when replacing early 30° seats with 45° seats, use 01-3040 valves so both will match.		
120. Exhaust, Standard Diameter (.502" o.d.) _____	01-3060	A/R			
121. Exhaust, .002" oversize (.504" o.d.) _____	01-3060.002	A/R			
122. Exhaust, .005" oversize (.507" o.d.) _____	01-3060.005	A/R			
123. Exhaust, .008" oversize (.510" o.d.) _____	01-3060.008	A/R			

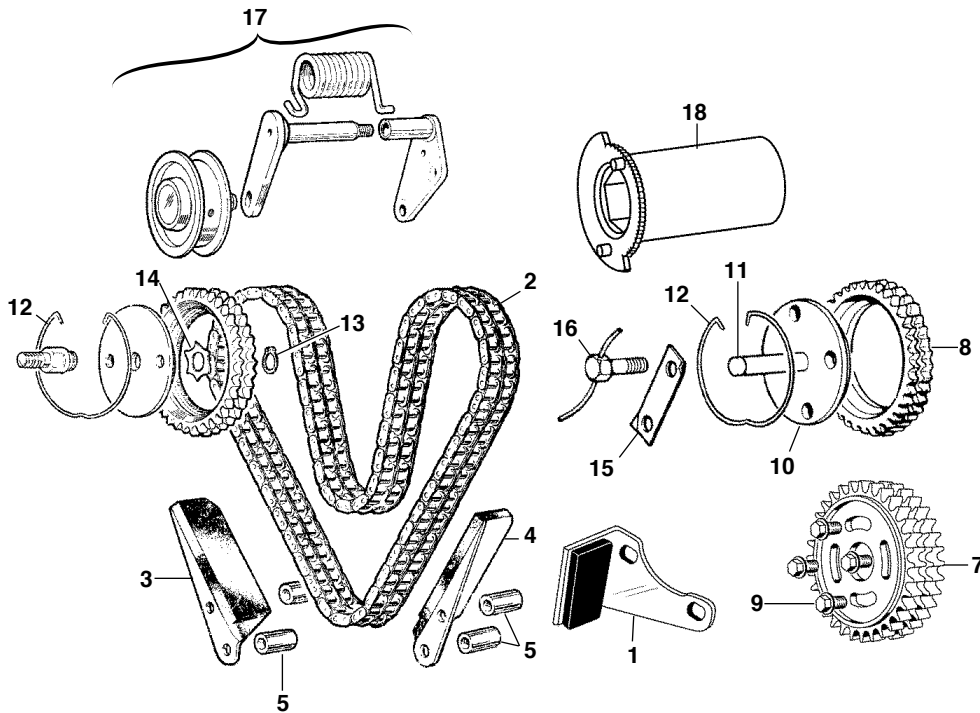
Note: We stock only manganese-bronze valve guides that are the best made world-wide. They are grooved to accept stem seals and retaining clips.



Timing Chains & Components, "XK" Six-Cylinder Engine, 1949-1987

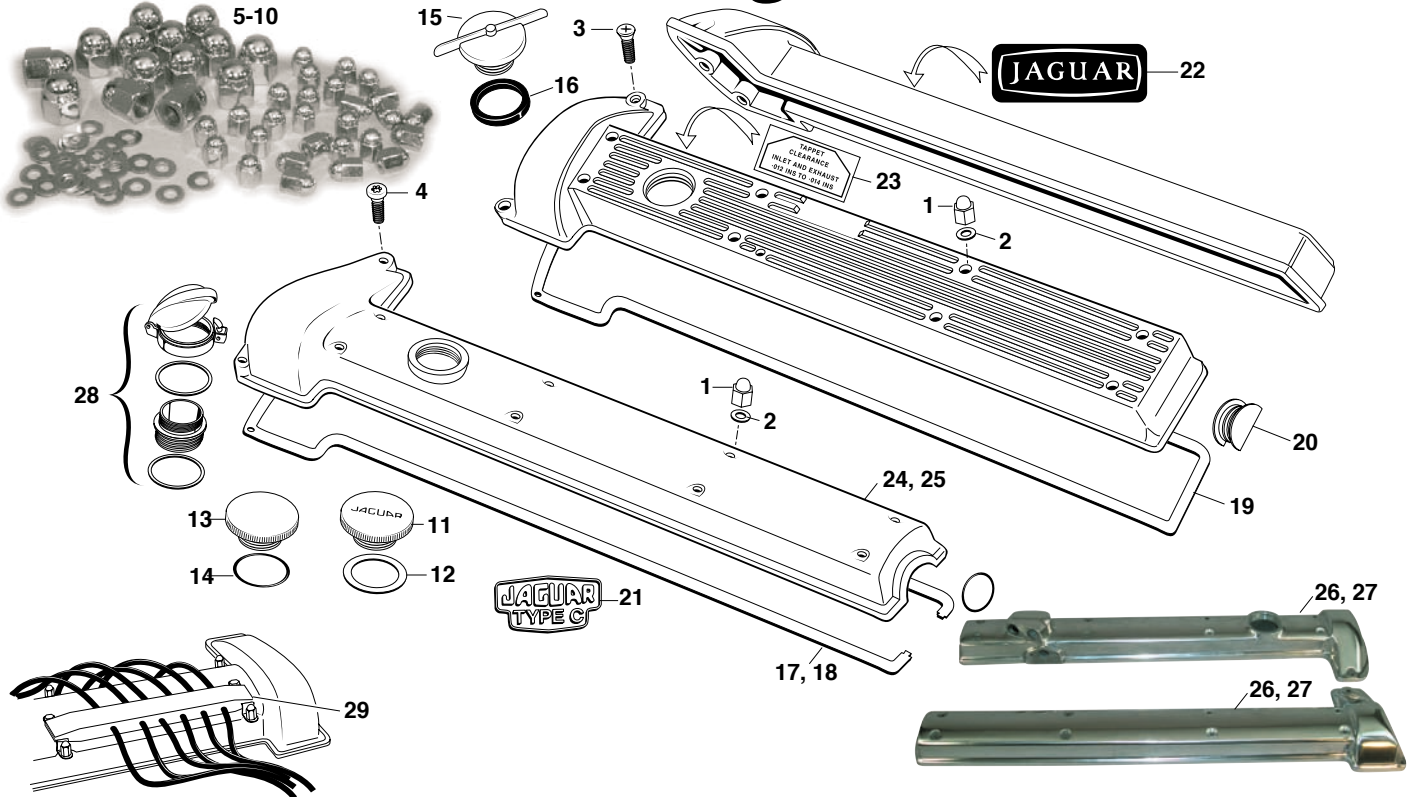
- | | | | |
|---|---------------------|--|-----------------|
| 1. Timing Cover, about Feb. 1969-on _____ | JA-EAC2061 | 13. Filter, Hydraulic Tensioner _____ | C13457 |
| Note: With minor welding, can be fitted on cars back to 1956. | | 14. 4.2 Liter Intermediate Guide _____ | C21815 |
| 2. Front Crankshaft Seal _____ | See Page 151 | 15. Lock Plate, 4.2 Intermediate Guide _____ | C21831 |
| 3. Timing Pointer _____ | See Page 118 | 16. Lower Guide _____ | C13614-1 |
| 4. Gasket, Timing Cover _____ | See Page 151 | 17. Lock Plate, For Lower Guide _____ | C20397 |
| 5. Stud, Timing Cover to Cylinder Head, 2 Req'd. _____ | C2183 | 18. Shaft, intermediate sprocket _____ | C26608 |
| Note: Please call for other timing cover studs. | | 19. Snap Ring, intermediate sprocket shaft _____ | C2335 |
| 6. Alternator Bracket, 4.2 Series I E-Type _____ | C24455 | 20. Shims, intermediate sprocket, as req'd _____ | C16626 |
| 7. Chain Tensioner, Blade-Type _____ | C8245 | 21. Intermediate Gear _____ | C25275 |
| 8. Spring, Blade-Type Tensioner, stainless _____ | C4101SS | 22. Bushing Only for Intermediate Gear _____ | C2320 |
| Note: Blade tensioner fitted to all XK-120, XK-140 to engine G4430; all MK VII A- & B-series engines and D1001 to D9868. | | 23. Spring _____ | C2297 |
| 9. Retainer Pin, Tensioner Spring _____ | C6729 | 24. Locking Pin _____ | C4405 |
| Note: Fitted to XK-120 from engine W.4052-on, all F-Series XK-120 engines and XK-140 and MK VII with blade-type tensioner. | | 25. Chain Adjusting Plate _____ | C4404 |
| 10. Chain Tensioner, Later Hydraulic Type _____ | JA-EAC3629 | 26. Eccentric Adjuster _____ | C27189 |
| 11. Chain Tensioner Conversion, adapts early blade-type tensioner to hydraulic type _____ | 01-2000 | 27. Idler Gear _____ | C26740 |
| 12. Lock Plate, Hydraulic Tensioner _____ | C10333 | 28. Bushing, Idler Gear _____ | C2319-1 |
| | | 29. Lower Timing Chain, 3.4, 3.8 & 4.2-liter _____ | C2255 |
| | | 30. Lower Timing chain, 2.4 & 2.8 Liter only _____ | C8654 |

Timing Components Continued on Next Page ...



Timing Chains & Components, "XK" Six-Cylinder Engine, 1949-1987

- | | |
|---|--|
| <p>1. 3.4 & 3.8 Intermediate Guide _____ C13615-1
 Note: Not for early 3.4 engines with C8245 blade-type tensioner.</p> <p>2. Upper Timing Chain, all _____ C2256</p> <p>3. Upper Guide, Right Side _____ C13617</p> <p>4. Upper Guide, Left Side _____ C13616
 Note: XK-120, 140, early XK-150, MK VII and early MK VIII were fitted with cast upper guides. Jaguar superceded these to the stamped type. When converting, order four C13660 spacers.</p> <p>5. Spacer, 3.4 & 3.8 Upper Chain Guides, 4 Req'd. _____ C13660
 Spacer, 4.2 Liter Upper Chain Guides, 4 Req'd. _____ C21734</p> <p>6. Timing Chain, Guide & Tensioner Kit, 4.2 _____ 01-CTK308
 Note: Includes chains, guides and tensioner.</p> <p>7. New-Style Cam Gear, requires bolts below,
 2 Required. _____ JA-NBB2549AA</p> | <p>8. Original-Style Cam Gear _____ C24686</p> <p>9. Mounting Bolts, New-Style Cam Gear, 8 Req'd. JA-JZS100082
 Note: This new-style adjustable cam gear does not require the hardware below.</p> <p>10. Adjusting Plate, 2 Req'd., Old-Style Gear, Pin Req'd. _ C34034</p> <p>11. Pin, Old-Style Adjusting Plate, 2 Req'd. _____ C34022</p> <p>12. Adjusting Plate Snap Ring, 2 Req'd. _____ C30767</p> <p>13. Circlip, retaining guide pins, 2 Req'd. _____ C2261</p> <p>14. Star Washer, 2 Req'd. _____ C2194</p> <p>15. Lock Plate, Later 4.2 Cam Gear, 2 Req'd. _____ C33917</p> <p>16. Cam Bolt, Later Type, Not Drilled, 8 Req'd. ____ JA-JZB100042</p> <p>17. Belt Tensioner Pulleys and Springs _____ See Pages 216-225</p> <p>18. Timing Chain Adjuster Tool _____ 17-0112</p> |
|---|--|



Cam Covers, "XK" Six-Cylinder Engine, 1949-1987

1. Cam Cover Dome Nut, Chrome, 22 Required _____ **C2327**
2. Copper Washer, Cam Cover Dome Nuts, 22 Req'd. _ **JA-FW104-E**
- Note:** Later Series II E-Type and all XJ-6 require 20 nuts and 20 washers.
3. Cam Cover Machine Screw, Series II E-Type from engines 7R2083 and 7R35463, "Pozi" type, 2 Req'd. _ **JA-UCS.025/6H**
4. Cam Cover Machine Screw, XJ-6, Torx style, 2 Required _____ **C42326/4**

Chrome Cylinder Head and Cam Cover Nut/Washer Kits:

These are show-quality pieces. Not the least expensive, but the best. Standard kits include 22 chrome cam cover dome nuts, 22 copper washers and 14 chrome cylinder head dome nuts. Master kits include four additional nuts and washers for the front breather cover. Series II E-Type and XJ-6 kits include the appropriate Pozi or Torx machine screws (see item numbers 3 and 4). Because applications vary widely, we've not included the round and "D"-shaped cylinder head washers. Purchase these separately for your particular application. Please see page 119.

5. Standard Kit, all early cars _____ **16-5500**
6. Master Kit, all early cars _____ **16-5501**
7. Standard Kit, later Series II E-Type _____ **16-5502**
8. Master Kit, later Series II E-Type _____ **16-5503**
9. Standard Kit, XJ-6 _____ **16-5504**
10. Master Kit, XJ-6 _____ **16-5505**
11. Oil Filler Cap, "Jaguar" Text _____ **C1022**
12. Fiber Washer, for Text Logo Cap _____ **C419**
13. Oil Filler Cap, Round, No Logo _____ **C27278**
14. O-Ring Seal, for No-Logo Cap _____ **C25480**
15. Oil Filler Cap, Late Series II XJ-6-on _____ **JA-EAC6523**

16. Seal, for Late Cap _____ **C42511**

Cam Cover Gaskets:

17. 3.4 & 3.8 with Cable-Operated Tach, Right _____ **01-JM448**
17. 3.4 & 3.8 with Cable-Operated Tach, Left _____ **01-JM448**
18. 3.4 & 3.8 with Tach Generator, Right _____ **01-JM447**
17. 3.4 & 3.8 with Tach Generator, Left _____ **01-JM448**
18. 4.2-Liter to 1974, Right Side _____ **01-JM447**
17. 4.2-Liter to 1974, Left Side _____ **01-JM448**
19. 4.2-Liter, 1974-1987, Right Side _____ **JA-EAC5039**
19. 4.2-Liter, 1974-1987, Left Side _____ **JA-EAC5039**
20. Half-Moon Sealing Plug, XJ-6 Series II from 8L.9081, all Series III XJ-6, 2 Req'd. _____ **C39195**

For additional gaskets & seals see pages 151-153

21. Badge, with "C" Cylinder Head, XK-120/140, 2 Req'd. **16-0310**
22. "JAGUAR" Sticker, XJ-6 _____ **16-5013**
23. Tappet Clearance Sticker, Series II E-Type _____ **16-5028**
24. Cam Cover, Series I E-Type, LH _____ **C25469**
25. Cam Cover, Series I E-Type, RH _____ **C14987**
26. D-Type Cam Cover Pair. Excellent replicas of the vented cam covers that graced Jaguar's Le Mans-winning D-Types. Supplied with a flip-top oil filler. (D-Types had a dry sump, so original covers had no filler.) Special order. _____ **17-1598**
27. C-Type Cam Cover Pair. Modified reproduction, polished aluminum _____ **17-1565**
28. Flip-Top Oil Filler Cap. The engine compartment accessory. Supplied with cap, adaptor and gaskets. For all cars with threaded oil filler caps _____ **17-1599**
29. Competition Spark Plug Wire Holder, a replica of the factory part used in the '50s and '60s _____ **17-8524**

Breather, "XK" Six-Cylinder Engine, Early Cars

1. Stud, Cylinder Head to Breather Outlet, 4 Required ____ **C6727**
2. Copper Sealing Washer, 4 Required _____ **JA-FW104-E**
3. Dome Nut, Chrome, 4 Required _____ **C2327**
4. Gasket, 2 Required _____ **C2227**
5. Screen (NLS) _____ **C37282**

Note: The above components fit all six-cylinder cars through 1987. The C37282 screen replaces the baffle fitted to early cars.

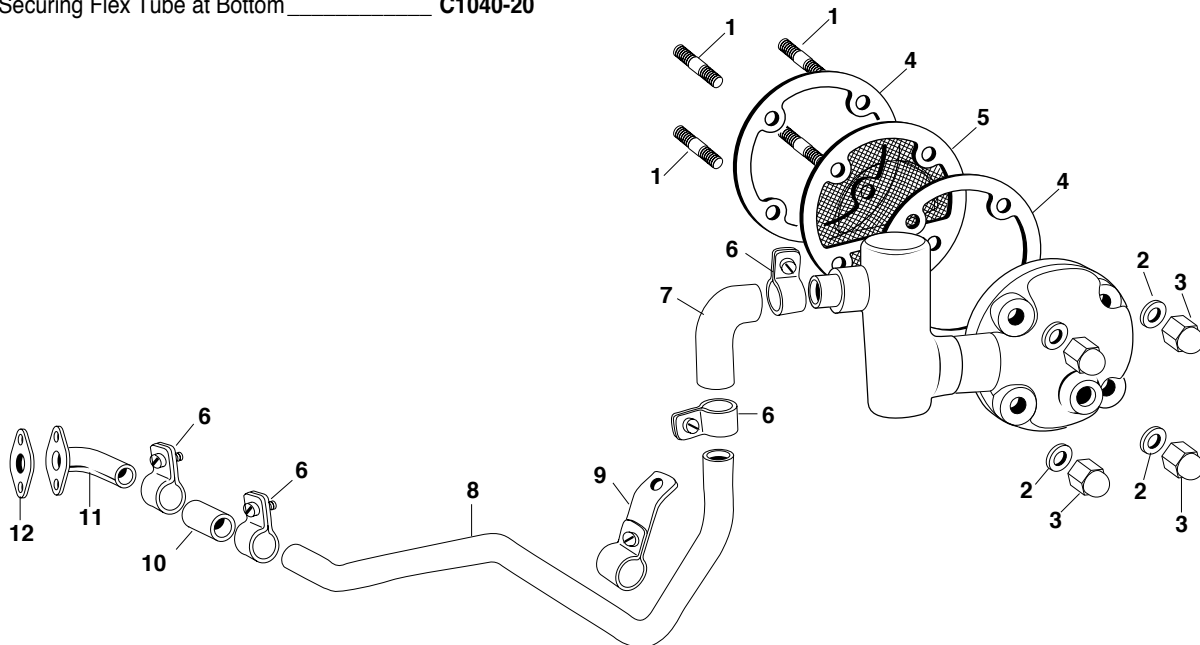
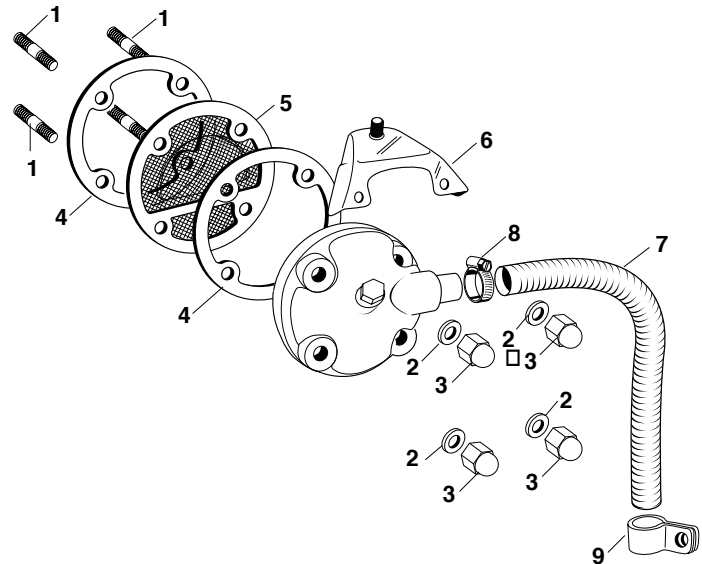
6. Coil Bracket on Breather Housing, Series I and II E-Type, MK II, MK IX, 3.4S/ 3.8S _____ **C8047**

7. Flexible "Chrome" Vent Breather Tube:

XK-120, XK-140, MK I, 3.8 E-Type OTS up to 875385 and FHC to 885020, early MK II 3.4 to engine KG.8271, all LA-series 3.8 MK II and LB-series 3.8 to LB.39211 _____ **C2485-1**
 XK-150 _____ **C15400**
 MK VII, MK VIII, MK IX _____ **C4500**

Note: These are cut to the correct length plus a little extra so you can make a clean cut prior to installation.

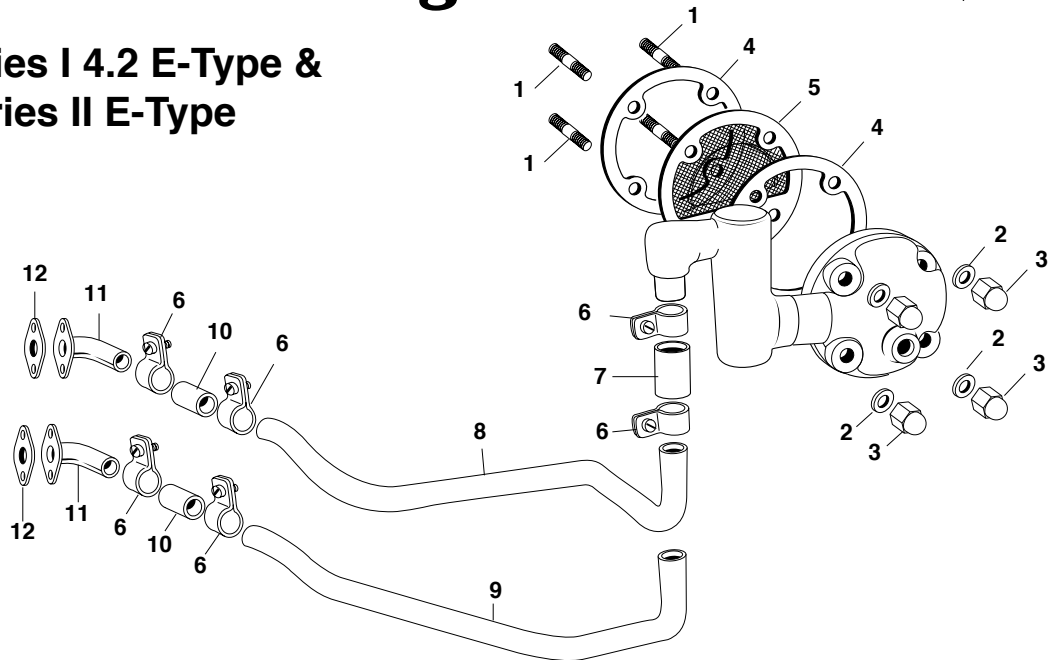
8. Clamp, Securing Flex Tube to Breather Outlet ____ **09-BS/25**
9. Clamp, Securing Flex Tube at Bottom _____ **C1040-20**



Breather, 3.8 E-Type

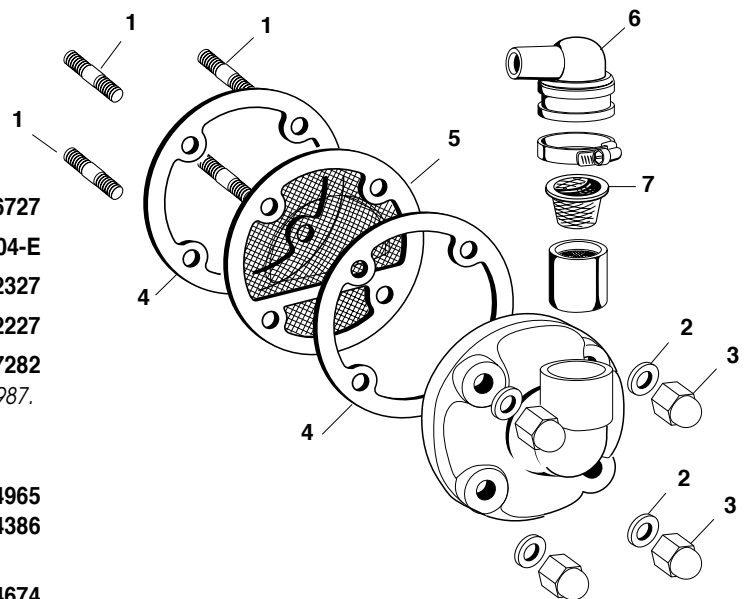
- | | |
|---|--|
| 1. Stud, Cylinder Head to Breather Outlet, 4 Required ____ C6727 | 7. Elbow Hose at Breather, 3.8 E-Type, later MK II (with rigid pipe), 3.8S _____ C18591 |
| 2. Copper Sealing Washer, 4 Required _____ JA-FW104-E | 8. Breather Pipe, E-Type 3.8 OTS from 875386 and FHC from 885021 _____ C19002 |
| 3. Dome Nut, Chrome, 4 Required _____ C2327 | 9. Clamp, Pipe to Manifold, 3.8 E-Type only _____ C19007 |
| 4. Gasket, 2 Required _____ C2227 | 10. Hose, Pipe to Fitting on Air Box Base _____ C18589 |
| 5. Screen (NLS) _____ C37282 | 11. Fitting on Air Box Base, 3.8 E-Type only _____ C19003 |
| Note: The above components fit all six-cylinder cars through 1987. The C37282 screen replaces the baffle fitted to early cars. | 12. Gasket, on Fitting, 3.8 E-Type only _____ C19006 |
| 6. Clamp, Hoses to Pipe, 4 Required _____ C15886/8 | |

Breather, Series I 4.2 E-Type & Early Series II E-Type



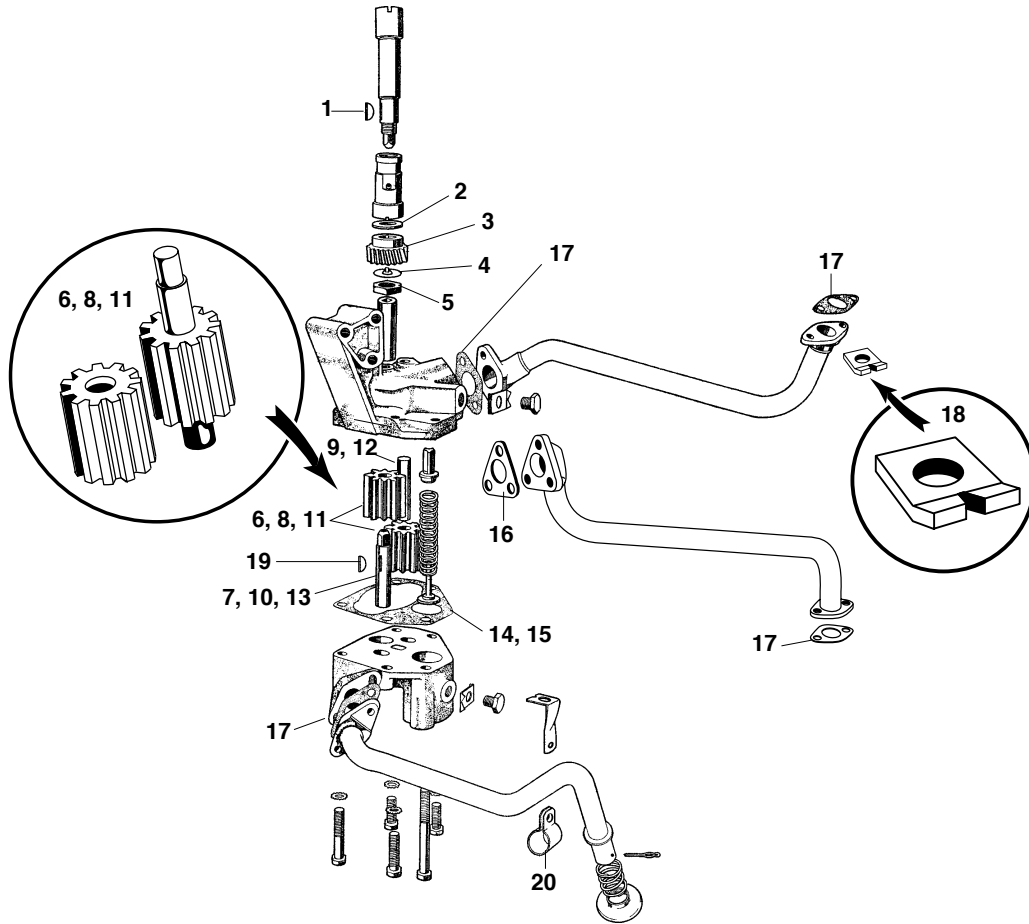
- | | |
|---|--|
| 1. Stud, Cylinder Head to Breather Outlet, 4 Required ____ C6727 | 7. Hose, Breather to Pipe, 4.2 E, 340 _____ C25263 |
| 2. Copper Sealing Washer, 4 Required _____ JA-FW104-E | 8. Breather Pipe, E-Type 4.2 Series I _____ C25258 |
| 3. Dome Nut, Chrome, 4 Required _____ C2327 | 9. Breather Pipe, Late Series I 4.2, Series I-1/2 and early Series II E-Type _____ C28247 |
| 4. Gasket, 2 Required _____ C2227 | 10. Hose, Breather to Fitting, 4.2 E, 340 _____ C25263 |
| 5. Screen (NLS) _____ C37282 | 11. Fitting on Air Trumpet, 4.2 E-Type only _____ C25268 |
| Note: The above components fit all six-cylinder cars through 1987. The C37282 screen replaces the baffle fitted to early cars. | |
| 6. Clamp, Hoses to Pipe, 4.2 E-Type, 4 Req'd. _____ C2905-3 | 12. Gasket, on Fitting, 4.2 E-Type only _____ C25271 |

Breather, Late Series II E-Type, XJ-6 Series I, II & III



- | | |
|--|--|
| 1. Stud, Cylinder Head to Breather Outlet, 4 Required ____ C6727 | |
| 2. Copper Sealing Washer, 4 Required _____ JA-FW104-E | |
| 3. Dome Nut, Chrome, 4 Required _____ C2327 | |
| 4. Gasket, 2 Required _____ C2227 | |
| 5. Screen (NLS) _____ C37282 | |
| Note: The above components fit all six-cylinder cars through 1987. The C37282 screen replaces the baffle fitted to early cars. | |
| 6. Rubber Boot on Breather
Series II E-Type, Series I & II XJ-6, 1.3" I.D. _____ C34965
Series III XJ-6, 1.75" I.D. _____ C44386 | |
| 7. Filter Under Boot:
XJ-6 Series I & II (NLS) _____ C34674
XJ-6 Series III _____ C44410 | |

Engine



Early Gear-Type Oil Pump

Engine

- | | | | |
|--------------------------|--------------------|--|--------------|
| 1. Key _____ | C753 | 12. Spindle, Driving Gear _____ | C6549 |
| 2. Distance Washer _____ | C2393 | 13. Spindle, Driven Gear _____ | C6547 |
| 3. Drive Gear _____ | C2152 | Note: "Driving Gear" is the gear driven off the distributor shaft. Its spindle is the one with a locking key. | |
| 4. Lock Tab _____ | C2151 | Gasket, Cover to Pump Body: | |
| 5. Nut _____ | JA-NT609041 | 14. MK VII A.1001-A.9999 & B.1001 to B.5304 _____ | C2277 |

Gear Sets and Gaskets, Early-Type Oil Pump

XK-120, engines W1001 to W2760:

- | | |
|---|----------------|
| 6. Gear Set, pair, this is the part that actually wears out _ | C2221/4 |
| 7. Spindle, Driven Gear _____ | C1441 |

XK-120, engines W2761-on plus all F-Series; MK VII engines A1001-A9999; B1001-B5304:

- | | |
|---|----------------|
| 8. Gear Set, pair, this is the part that actually wears out _ | C4716/7 |
| 9. Spindle, Driving Gear _____ | C4718 |
| 10. Spindle, Driven Gear _____ | C1441 |

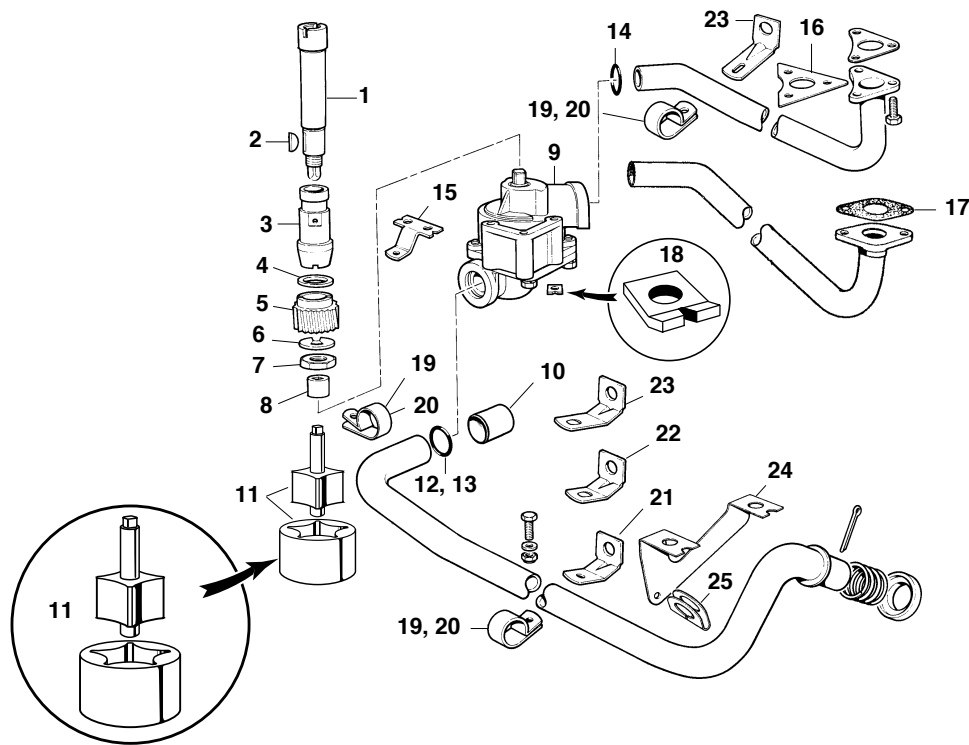
XK-140, engines G.1001 to G.1907; MK VII, engines B5305-B9999 and D1001-D6722:

- | | |
|--------------------------|----------------|
| 11. Gear Set, pair _____ | C6548/6 |
|--------------------------|----------------|

Gasket, Cover to Pump Body:

- | | |
|---|--------------|
| 15. MK VII B.5305 to B.9999 & D.1001 D.6722 _____ | C7718 |
| 14. XK-120 _____ | C2277 |
| 15. XK-140 _____ | C7718 |
| 16. Gasket, elbow to pump, XK-120 _____ | C2160 |
| 17. Gasket, pipe elbow, XK-120 _____ | C2220 |
| 17. Gasket, pipe elbows, MK VII, XK-140, 3 Required _____ | C2220 |
| 18. Lock Tab, on Pipe Bolts, as Required _____ | C7263 |
| 19. Woodruff Key, Driving Gear to Spindle _____ | C752 |
| 20. Clamp, Oil Suction Pipe, as Required _____ | C6824 |

Note: We highly recommend you fit one of these to the oil delivery pipe as well—Jaguar found out the hard way one year at the 24 Hours of Le Mans.



Later Six-Cylinder Oil Pump, to 1987

- | | | | |
|--|--------------------|--|---------------|
| 1. Drive Shaft, Oil Pump and Distributor _____ | C8646 | 12. Inlet O-Ring, 3.4 & 3.8 Liter W/Orig. Pump _____ | C8649 |
| 2. Key _____ | C753 | 13. Inlet O-Ring, All With 4.2 Pump _____ | C21848 |
| 3. Bushing _____ | C8647 | 14. Outlet O-Ring, all _____ | C8649 |
| 4. Distance Washer _____ | C2393 | 15. Lock Plate, all _____ | C21793 |
| 5. Drive Gear _____ | C2152 | 16. Lock Plate, oil pipe to block, 4.2 (three holes) _____ | C22952 |
| 6. Lock Tab _____ | C2151 | 17. Gasket, oil pipe flanges, 3.4/3.8 (two holes) _____ | C2220 |
| 7. Nut _____ | JA-NT609041 | 18. Tab Washer, For oil pump to bearing cap bolts _____ | C7263 |
| 8. Drive Dog _____ | C8648 | | |

Late Type Oil Pump

Note: Starting with the later MK VII and XK-140, this pump was fitted to all six-cylinder Jaguars to 1987. We sell the latest 4.2-liter version with increased capacity. It can be fitted to 3.4- and 3.8-liter cars with a simple adaptor. It cannot be adapted to XK-120, or early XK-140 and MK VII with the gear-type pump.

- | | | | |
|---|----------------|--|--|
| 9. Oil Pump Assembly _____ | C21765 | | |
| 10. Pump Adaptor Tube, 3.4 and 3.8 Liter _____ | 01-0215 | | |
| 11. Rotor assembly only, 3.4/3.8 with original pump, this is the part that actually wears out _____ | C17665 | | |

Mounting Struts & Clamps, For oil pump delivery/pick-up tubes:

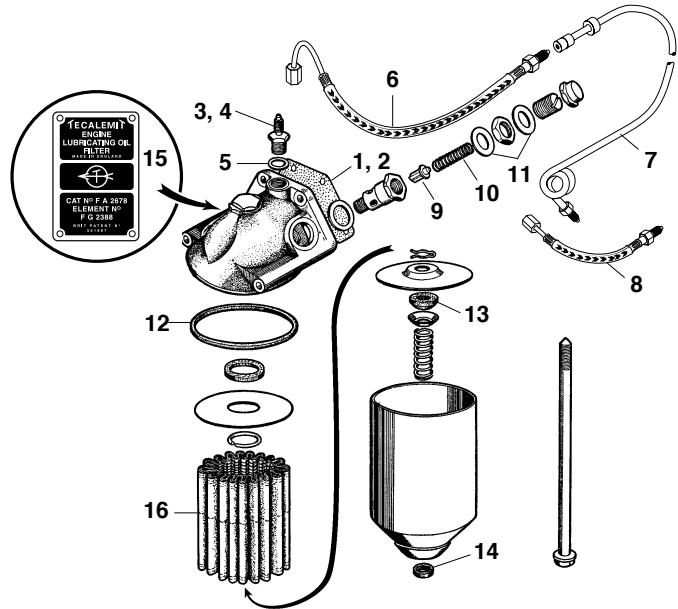
- | | |
|---|---------------|
| 19. Clamp, 3/4" I.D. Approx. _____ | C6824 |
| 20. Clamp, 7/8" I.D. Approx. _____ | C21794 |
| 21. Strut, Short, with round clamp mounting hole _____ | C28368 |
| 22. Strut, Short, with slotted clamp mounting hole _____ | C28367 |
| 23. Strut, Long, with slotted clamp mounting hole _____ | C28369 |
| 24. Strut, supporting oil suction pipe, 4.2 E-Type _____ | C21849 |
| 25. Clip, secures oil suction pipe to strut, 4.2 E-Type _____ | C21850 |

Note: There are many strut/clip combinations to secure oil suction and delivery pipes. Please call with your engine number or consult the appropriate factory parts manual (see pages 455-456).

Oil Filter Housings & Components, "XK" Six-Cylinder Engine, 1949-1987

Early Type Oil Filter and Housing

- XK-120, XK-140, MK VII, MK VIII, MK IX
- Gasket, oil filter housing to block:
XK-120, 140, MK VII, MK VIII _____ **C2248**
 - Gasket, oil filter housing to block:MK IX _____ **C14817**
 - Union Screw For Oil Flex Line: XK-120 _____ **JA-2695**
 - Union Screw For Oil Flex Line: XK-140, MK VII-MK IX _____ **JA-2698**
 - Sealing Washer on Union Screw _____ **C2296-3**
 - Flex Line to Oil Gauge Pipe _____ **C8068**
 - Pipe to Oil Gauge _____ **JA-1425**
 - Flex Line from Pipe to Oil Gauge, flexible line allows you to pull instrument panel back from dash without disconnecting oil pressure line, prevents oil from dripping on carpet _____ **01-0216**
 - Relief Valve _____ **JA-7310**
 - Spring For Relief Valve _____ **JA-2742**
 - Copper Washers, each side of valve, 2 required _____ **C1088/J**
 - Seal, Filter Cannister to Housing _____ **JA-137037**
 - Felt Washer in Pressure Plate _____ **C20178**
 - Sealing Washer on Bolt _____ **JA-6158**
 - Tecalemit Filter Badge (comes with rivets) _____ **01-0103**
 - Oil Filters _____ **See pages 147-148**



Oil Filter Housing: XK-150, Series I E-Type, Series II E-Type to 7R.2297 & R.35582, MK II, 340, 3.8S, 420, MK X 4.2/420G, 3.4 MK I, 3.8 MK X

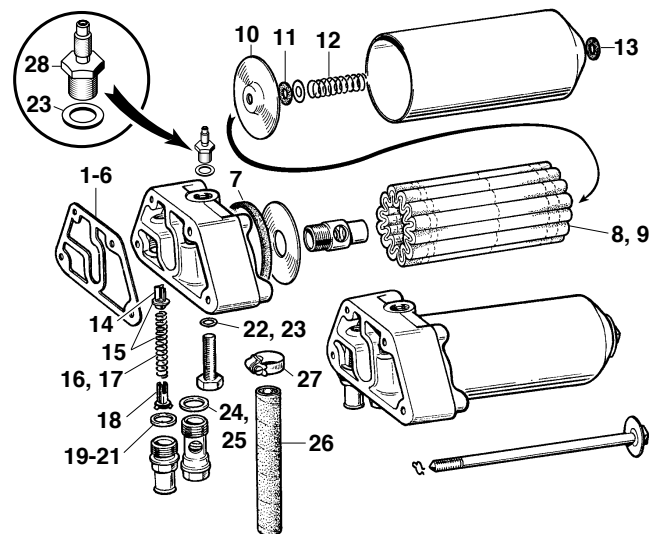
Note: Unless exceptions are noted, part fits all above applications.

Gasket to Block:

- MK I block to blanking plate (all); plate to housing to E. KE3053 _____ **C12177**
- XK-150; MK I plate to housing from e. KE3054; MK II to e. KG4674 & e. LA7449 _____ **C13091**
- MK II KG6475-KG9999; KH1001-KH7062; LB1001-LB9999; LC1001-LC4264 _____ **C16301**
- MK II KH7063-KH9999; all KJ; LC4264-LC9999; 3.8S/3.4S; 420 _____ **C20532**
- 3.8 E-Type _____ **C15962**
- 4.2 Series I E-Type; Series II E-Type to 7R.2297 (FHC & OTS) & 7R.35582 (2+2) _____ **C21912**
- Sealing Ring, all except 3.4 MK I to KE.3053 _____ **JA-6883**
- Oil Filter, Paper _____ **02-GFE101P**
- Oil Filter, Felt _____ **02-GFE101F**
- Pressure Plate, all except MK I 3.4 to KE.3053 _____ **JA-6886**
- Washer, Under Pressure Plate _____ **JA-6161**
- Spring, Bottom of Cannister _____ **JA-6159**
- Washer, on Bolt, End of Cannister _____ **JA-6158**
- Relief Valve, MK II 3.4 to KG.4674; 3.8 to LA.7449, XK-150, 3.4 MK I from KE.3054 _____ **JA-7310**
- Relief Valve & Spring, E-Types, MK II 3.4 from KG.4675 & 3.8 from LA.7450, 3.8S, 420, all MK X _____ **JA-2714**

Relief Valve Spring Only:

- MK II 3.4 to KG.4674 & 3.8 to LA.7449, XK-150, MK I 3.4 from KE.3054 (NLS) _____ **JA-7315**
- E-Type, MK II 3.4 from KG.4675 & 3.8 from LA.7450, 3.8S, 420, all MK X _____ **JA-8105**
- Spider and Pin Assembly, E-Type, 3.8S, 420, all MK X, MK II 3.4 from KG.4675 and 3.8 from LA.7450 (not for earlier MK I, XK-150 or 3.4 MK I) _____ **JA-8106**



Washer Under Hose Adaptor:

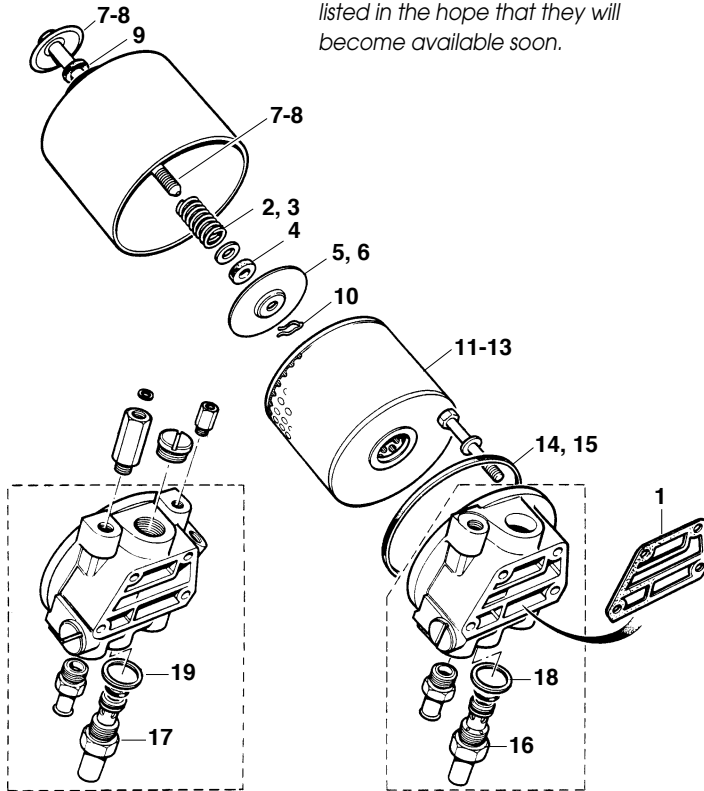
- 3.8 E-Type, 3.8 MK X to ZA.5802 (NLS) _____ **JA-8107**
- 4.2 E-Type, 3.8S, 3.8 MK X 3.8 from AA.5803, MK II 3.4 from KG.4675 & 3.8 from LA.7450, 420, MK X 4.2 _____ **JA-9662**
- MK II 3.4 to KG.4674; 3.8 to LA.7449, XK-150, 3.4 MK I from KE.3054 _____ **C2296-1**
- Washer on Drain Plug, Series I E-Type _____ **JA-FW106-E**
- Washer on Drain Plug, MK II to, XK-150, 3.4 MK I _____ **C2296-3**

Washer on Balance Valve:

- 3.8 E-Type, MK II (NLS) _____ **JA-8103**
- 4.2 E-Type, 3.8S, 420, 4.2 MK X, 3.8 MK X ZA.5803-on _____ **JA-RTC1142**
- Hose to Sump (shorten for some models) _____ **C15949**
- Clamp on hose, 2 required _____ **09-BS/25**
- Union Screw, to Oil Flex Line, XK-150, MK I 3.4 _____ **JA-2698**
- Washer, Under Union Screw, XK-150, MK I 3.4 _____ **C2296-3**

Oil Filter Housings & Components, "XK" Six-Cylinder Engine, 1949-1987

Note: Discontinued items (NLS) are listed in the hope that they will become available soon.



Series II E-Type from 7R.2298 & 7R.35583; Series I XJ-6, Series II XJ-6 with cartridge filter

1. Gasket to Cylinder Block, all _____ **JA-EAC1542**
2. Spring at Bottom of Cannister:
E-Type, Series I XJ-6 to 7L.40865 _____ **JA-6159**
3. Series I XJ-6 from 7L.40866, Series II XJ-6 (NLS) __ **JA-12962**
4. Washer, Felt, Under Pressure Plate, all _____ **JA-11665**

Pressure Plate:

5. E-Type, Series I XJ-6, Series II XJ-6 to 8L.9800 ____ **JA-11666**
6. Series II XJ-6 from 8L.9801 (NLS) _____ **JA-AAU1012**

Bolt Through Cannister:

7. E-Type (NLS) _____ **JA-12250**
8. Series I and II XJ-6 (NLS) _____ **JA-11667**
9. Rubber Washer on Bolt, all (NLS) _____ **JA-11668**
10. Spring Clip on Bolt, all (NLS) _____ **JA-6033**
11. Oil Filter: E-Type, Paper _____ **02-GFE101P**
12. Oil Filter: E-Type, Felt _____ **02-GFE101F**
13. XJ-6 Series I & II (cannister type only) _____ **02-GFE140**
14. Sealing Ring on Cannister, E-Type only (NLS) ____ **JA-6883**
15. Sealing Ring on Cannister, Series I & II XJ-6 (NLS) _ **JA-11670**

Relief Valve Assembly:

16. E-Type, Series I XJ-6 to 7L.40865 _____ **JA-11672**
17. Series I XJ-6 from 7L.40865, Series II XJ-6 _____ **JA-JS234**

Sealing Washer for Relief Valve, Plug and Adaptor:

18. E-Type, Series I XJ-6 to 7L.40865 _____ **JA-9662**
19. XJ-6 Series I from 7L.40866, XJ-6 Series II _____ **JA-JS233**

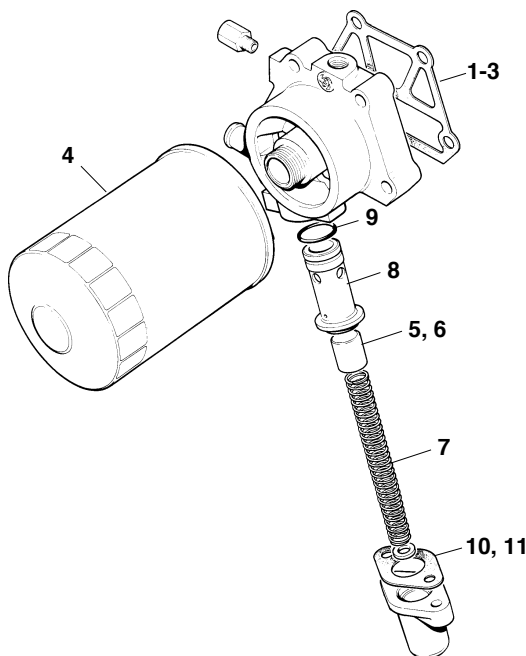
XJ-6 Series II from engine 8L.28179 (spin-on filter), XJ-6 Series III

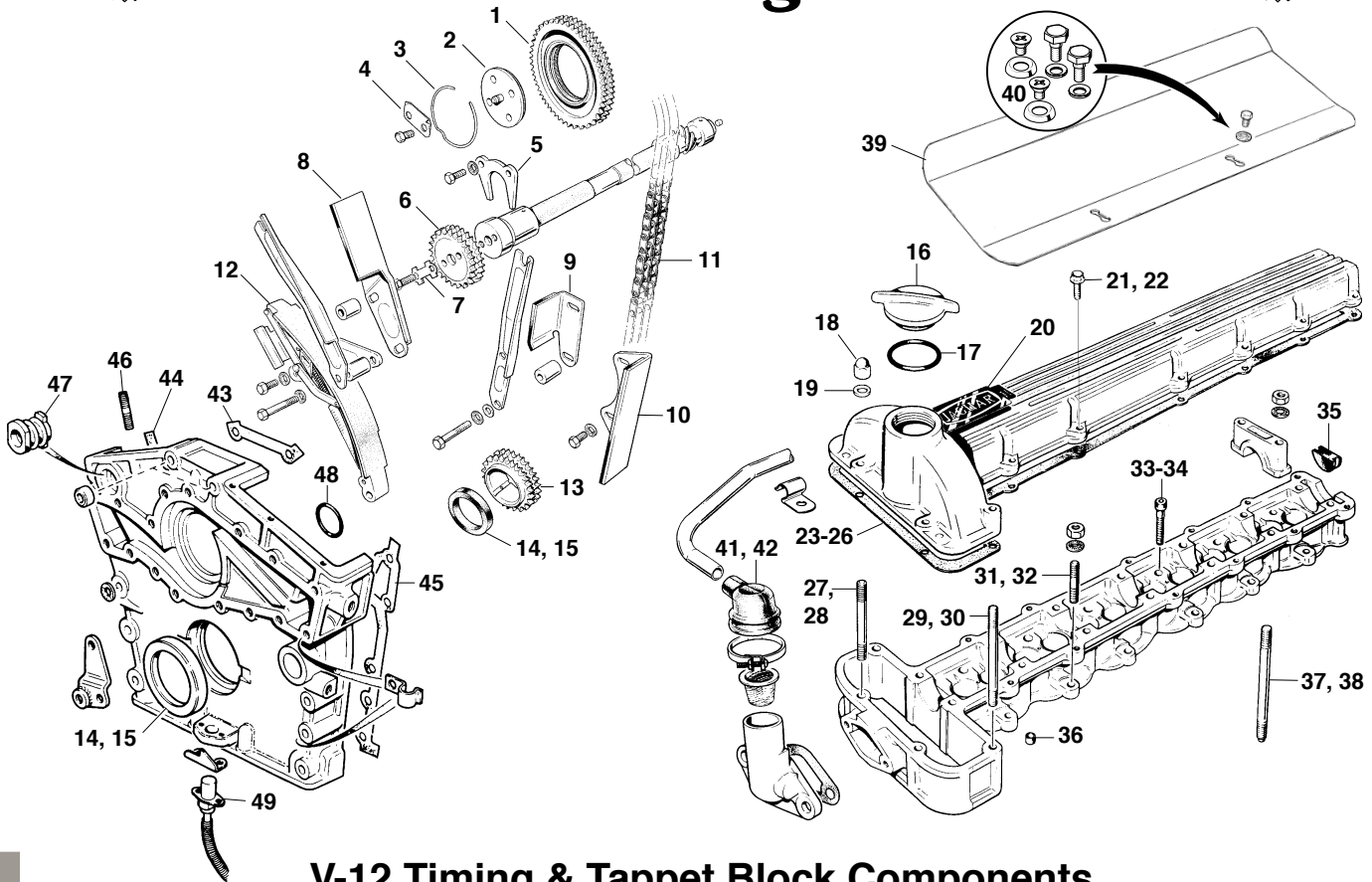
Gasket, Filter Housing to Block:

1. Carbureted Series II _____ **C44277**
2. All Fuel Injected Series II, Series III up to
Engine 8L102220 _____ **JA-EAC1670**
3. XJ-6 Series III from engine 8L102221 _____ **JA-EAC7377**
4. Oil Filter _____ **02-EBC9658**
5. Relief Valve, Carbureted Series II XJ-6 _____ **JA-JS234**
6. Relief Valve, all Fuel Injected (NLS) _____ **JA-EAC1532**
7. Spring, all Fuel Injected _____ **JA-EAC1534**
8. Housing, all Fuel Injected _____ **JA-EAC2086**
9. O-ring, Valve-to-Housing, Fuel Injected _____ **JA-EAC2087**

Gasket:

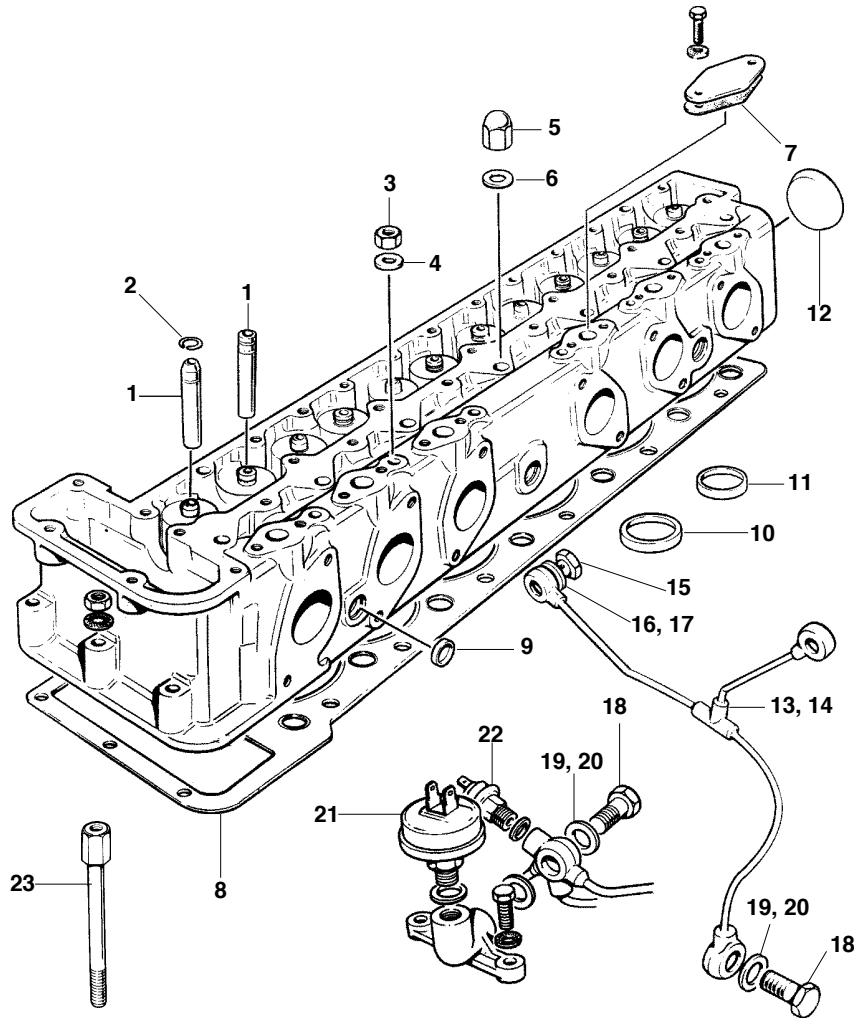
10. Fuel Injected Series II, Series III w/o Oil Cooler _ **JA-EAC1537**
11. Series III With Oil Cooler _____ **JA-EAC4178**





V-12 Timing & Tappet Block Components

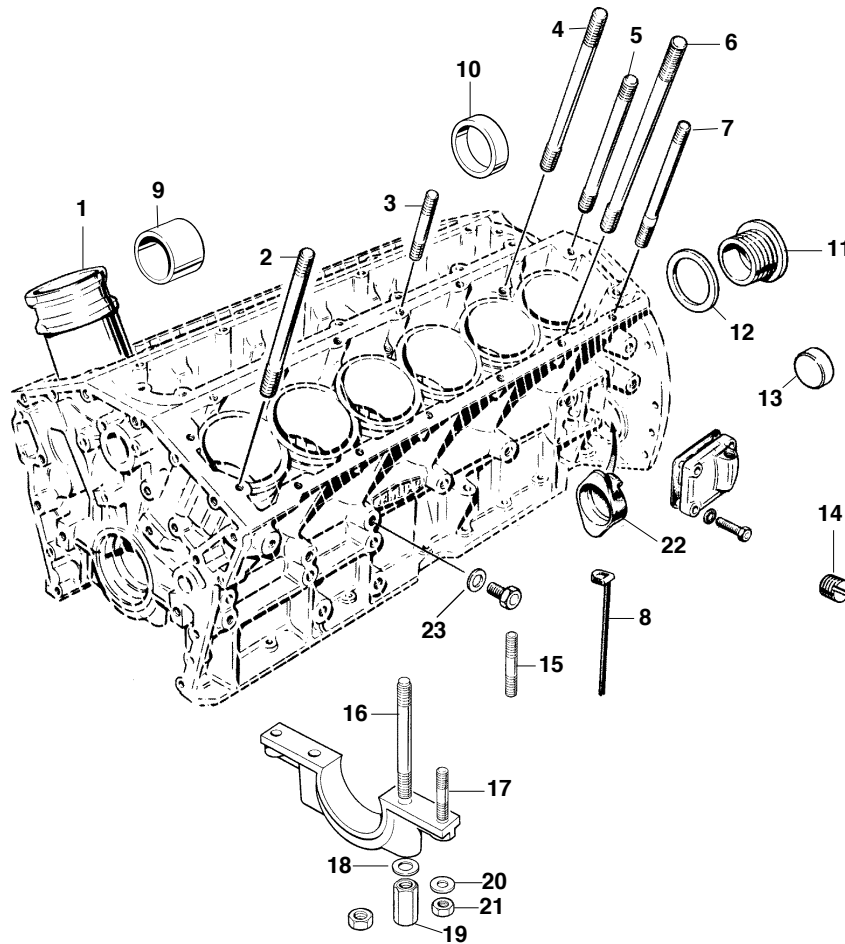
- | | | | |
|--|----------------------|--|----------------------|
| 1. Cam Gear, 2 Required _____ | C29349 | 25. Cam Cover Gasket, Upgraded, RH _____ | JA-EBC9627 |
| 2. Adjustment Plate, 2 Required (NLS) _____ | C33889 | 26. Cam Cover Gasket, Upgraded, LH _____ | JA-EBC9628 |
| 3. Clip, 2 Req'd. _____ | C30767 | 27. Stud, to H.E. engine 8S.24175, 4 Required _____ | C29435 |
| 4. Lock Plate for Cam Gear, 4 Required _____ | C33917 | 28. Stud, from H.E. engine 8S.24176, 4 Req'd. _____ | JA-TE108151-J |
| 5. Jack Shaft Retainer _____ | C29335 | 29. Stud, to H.E. engine 8S.24175, 4 Required _____ | C29436 |
| 6. Jack Shaft Gear _____ | C32227 | 30. Stud, from H.E. engine 8S.24175, 4 Req'd. _____ | JA-TE108171-J |
| 7. Lock Plate, Jack Shaft Gear _____ | JA-EBC9724 | 31. Stud, to H.E. engine 8S.24175, 12 Required _____ | C29437 |
| 8. R. H. Chain Guide _____ | C31068 | 32. Stud, from H.E. engine 8S.24176, 12 Req'd. _____ | JA-TE108051-J |
| 9. Center Chain Guide _____ | C29636 | 33. Allen Bolt, to H.E. engine 8S.24175, 12 Required _____ | C29396 |
| 10. L. H. Chain Guide _____ | C29635 | 34. Allen Bolt, from H.E. engine 8S.24176, 12 Req'd. _____ | JA-SS108400-J |
| 11. Timing Chain _____ | C29590 | 35. "Half Moon" Plug, 2 Required _____ | C30431 |
| 12. Timing Chain Tensioner _____ | C30485 | 36. Alignment Dowel, 4 Required _____ | JA-EBC9705 |
| 13. Crank Shaft Timing Gear _____ | C29330 | 37. Stud, to H.E. engine 8S.24175, 28 Required _____ | C30335 |
| 14. Crankshaft Seal, standard earlier type _____ | C30002 | 38. Stud, H.E. engine 8S.24175-on, 28 Required _____ | JA-EAC3653 |
| 15. Crankshaft Seal, later type, upgraded _____ | JA-JLM10613 | 39. Carburetor Rain Shields, V-12 E-Type, 2 Required _____ | C35727 |
| Note: The upgraded seal can be used for all applications. Highly recommended. | | | |
| 16. Oil Filler Cap _____ | JA-EAC6523 | 40. Rain Shield Hardware Kit, 8 pcs. _____ | 16-4400 |
| 17. Filler Cap O-Ring _____ | C42511 | 41. Breather Boot, 5.3 Liter _____ | C34965 |
| 18. Acorn Nut, 8 Required _____ | C32524 | 42. Breather Boot, 6.0 Liter _____ | JA-EBC3985 |
| 19. Washer for Acorn Nut, 8 Required _____ | JA-FW105-E | 43. Timing Cover Gasket, Top _____ | JA-EBC9625 |
| 20. "Jaguar" Sticker _____ | 16-5013 | 44. Timing Cover Gasket, Right Side _____ | JA-EBC9633 |
| 21. "Taptite" Screw, to H.E. engine 8S.24175, 24 Req'd. _____ | C35093-6 | 45. Timing Cover Gasket, Left Side _____ | JA-EBC9632 |
| 22. Flanged Screw, engine 8S.24176-on, 24 Req'd. _____ | JA-SN106251/J | 46. Stud, Top of Timing Cover, 6 Required _____ | C29340 |
| 23. Cam Cover Gasket, Standard, RH _____ | C29428 | 47. Rubber Plug, Chain Adjusting _____ | C37925 |
| 24. Cam Cover Gasket, Standard, LH _____ | C29429 | 48. O-Ring _____ | JA-EAC8102 |
| | | 49. Crank Sensor, Marelli Ignition, 1989-on, & 6.0 _____ | JA-DBC12507 |



V-12 Cylinder Head Components

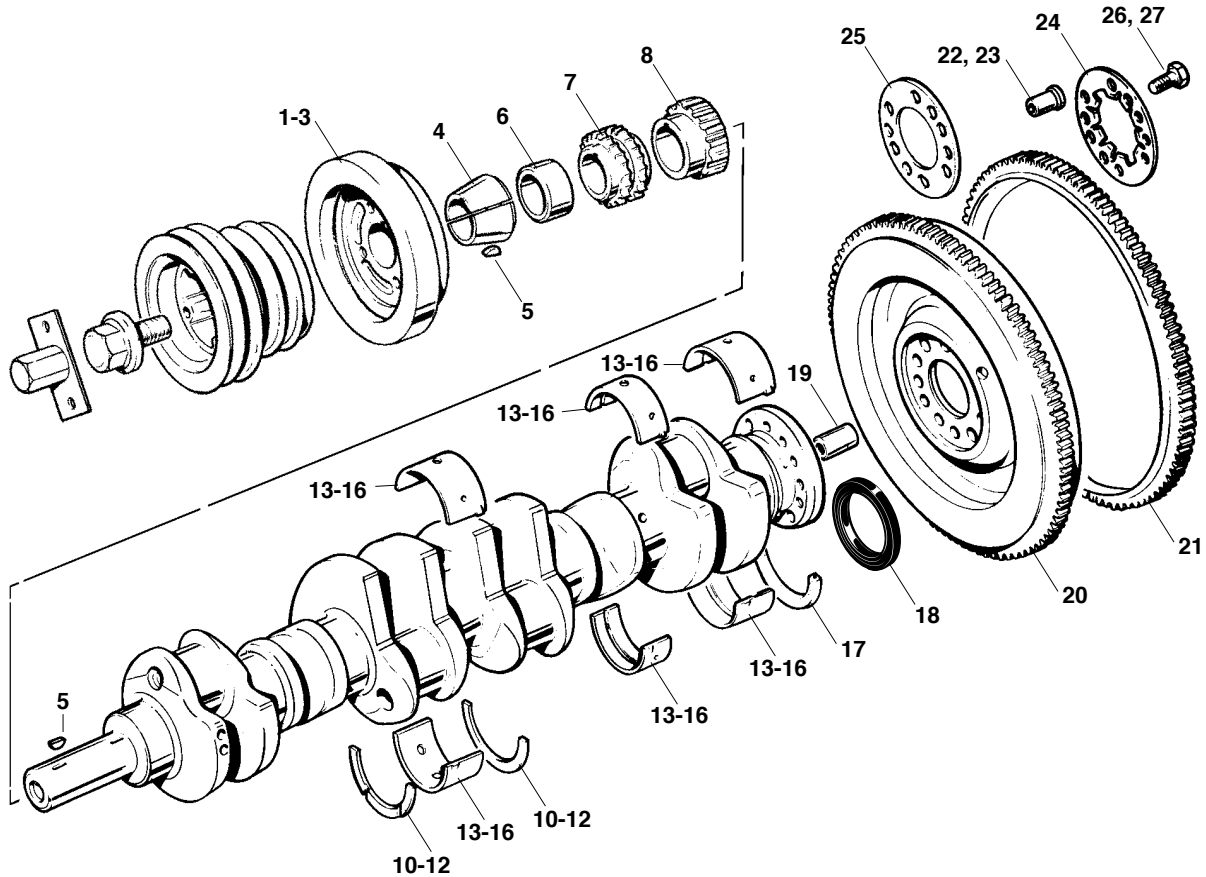
Description	Part No.	Qty. Req'd.	Description	Part No.	Qty. Req'd.
1. Intake and Exhaust Valve Guides _____	See Page 136	24	13. Oil Pipe, 5.3 Liter _____	JA-EBC3513	1
2. Valve Guide Clip _____	JA-EBC1782	24	14. Oil Pipe, 6.0 Liter _____	JA-EBC8755	1
3. Nut _____	C34734	24	<i>Note: The 5.3 liter pipe does not fit early V-12 E-Type without an oil pressure switch provision.</i>		
4. Washer Under Nut _____	C29420	24	15. Banjo Bolt, to Cylinder Heads _____	C5846	2
5. Chrome Acorn Nut _____	C37523	28	16. Washer for Bolt, standard type _____	C4146	4
6. Washer Under Acorn Nut _____	C29419	28	17. Washer for Bolt, upgraded _____	17-2000	4
7. Gasket _____	JA-EBC9634	12	18. Banjo Bolt, to block _____	C29652	1
8. Head Gaskets _____	See Page 152	2	19. Washer for Bolt, standard type _____	C2296-3	2
9. Core Plug _____	C16862-1	14	20. Washer for Bolt, upgraded _____	17-1999	2
10. Intake Valve Seat _____	See Page 136	12	21. Oil Pressure Sender _____	See page 318	1
11. Exhaust Valve Seat _____	See Page 136	12	22. Oil Pressure Warning Light Switch _____	See Page 318	1
12. Core Plug _____	C16862/6	2	23. E-Type Rainshield Attaching Stud _____	C35728	4

Engine



V-12 Block Components

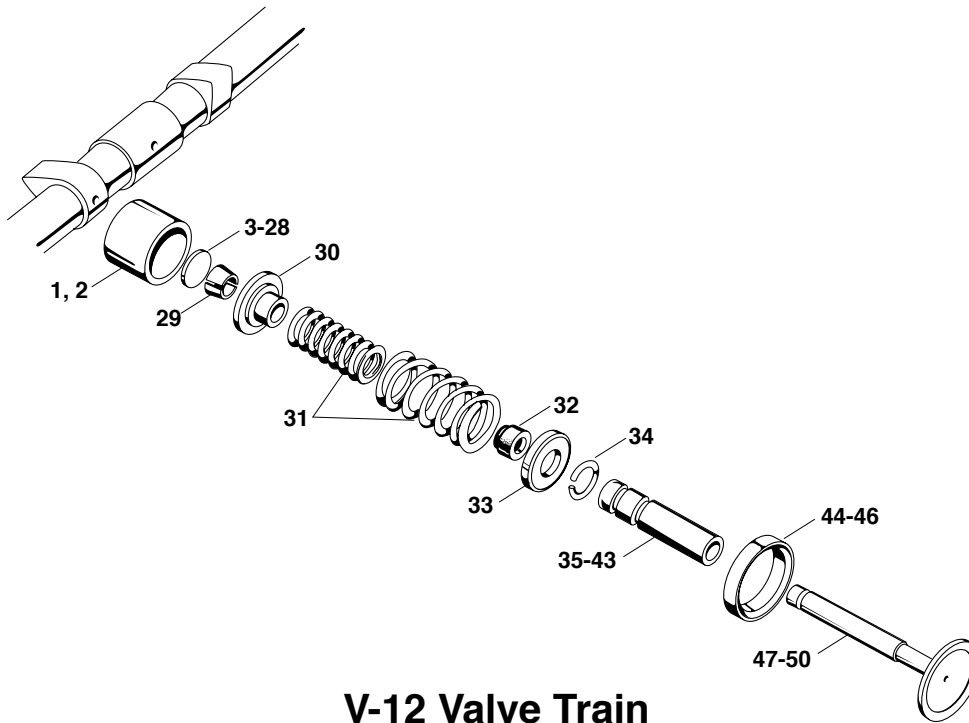
Description	Part No.	Qty.	Req'd.	Description	Part No.	Qty.	Req'd.
1. Piston/Liner Assembly _____	See Page 137	12		12. Washer for Plug _____	C2296-17	1	
2. Cylinder Head Stud, 5-5/16" long _____	JA-NAB2646BA	4		13. Core Plug _____	C16862-2	2	
3. Cylinder Head Stud, 2-3/4" long _____	C32680	12		14. Plug _____	C29272	1	
4. Cylinder Head Stud, 7-13/16" long _____	JA-NAB2646AA	10		15. Stud _____	C32272	2	
5. Cylinder Head Stud, 4-11/16" long _____	JA-NAB2646CA	4		16. Main Cap Stud _____	C29283	12	
6. Cylinder Head Stud, 8-1/2" long _____	JA-NAB2646DA	10		17. Main Cap Stud _____	C32273	14	
7. Cylinder Head Stud, 5-1/8" long _____	C32679	12		18. Washer _____	C28082	14	
8. Bearing Retainer/Oil Seal _____	C45154	2		19. Nut _____	C32726	3	
Note: This item is not included in gasket sets.				20. Washer _____	JA-FW106-T	16	
9. Jackshaft Bearing _____	C29273	1		21. Nut _____	C34734	16	
10. Jackshaft Bearing _____	C29274	2		22. Seal Flange _____	C34016	1	
11. Core Plug _____	C29268	1		23. Washer _____	C2296-3	5	



V-12 Crankshaft & Components

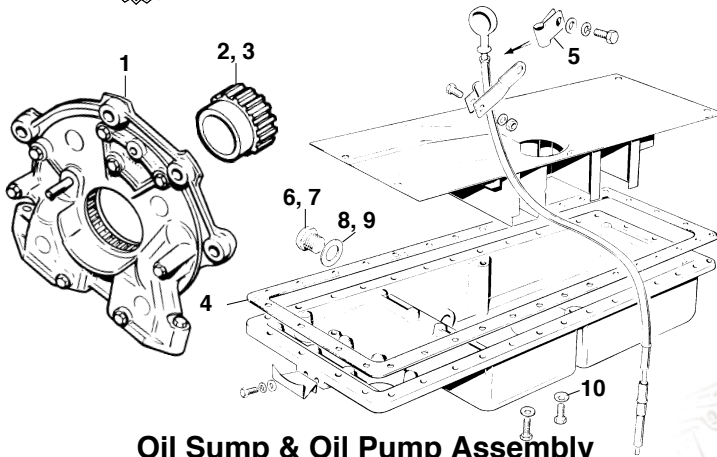
Description	Part No.	Qty	Description	Part No.	Qty.
1. Crankshaft Damper, E-Type V-12 to engine 7S.10798, rebuilt only	C34297/RB	1	10. Thrust Washer, pair, Standard	01-1100A/R	
1. Crankshaft Damper, E-Type V-12 from 7S.10799, XJ-12, XJ-S to engine 8S.57572, new	C36013	1	11. Thrust Washer, pair, .010" oversize	C34697A/R	
1. Crankshaft Damper, E-Type V-12, XJ-12, XJ-S to engine 8S.57572, rebuilt	C36013/RB	1	12. Thrust Washer, pair, .014" oversize	C34697-1A/R	
2. Crankshaft Damper, XJ-S engine 8S.57572 to end of 5.3-liter, new	JA-EAC9693	1	13. Main Bearing Set, Standard	01-1090.000A/R	
2. Crankshaft Damper, XJ-S engine 8S.57572 to end of 5.3-liter, rebuilt	JA-EAC9693/RB	1	14. Main Bearing Set, .010" oversize	01-1090.010A/R	
3. Crankshaft Damper, XJ-S 6.0 & XJ-12 6.0 to engine 8D.121470, new	JA-EBC9389	1	15. Main Bearing Set, .020" oversize	01-1090.020A/R	
3. Crankshaft Damper, XJ-S 6.0 & XJ-12 6.0 to engine 8D.121470, rebuilt	JA-EBC9389R/B	1	16. Main Bearing Set, .030" oversize	01-1090.030A/R	
3. Crankshaft Damper, XJ-S 6.0 from engine 8D.12470-on, new	JA-NHF1411AA	1	17. Rear Crankshaft Seal, Rope type, to XJ-S engine 8S.66782 (1989)	C19654	2
4. Split Cone	C13892	1	18. Rear Crankshaft Seal, Neoprene, XJ-S engine from 8S.66783 (1989)	JA-EBC2101	1
5. Woodruff Key	C757	4	Note: Later crankshaft seal is not interchangeable with early rope-seal type.		
6. Spacer	C32197	1	19. Pilot Bushing (4-speed only)	C2226	1
7. Gear, Timing Chain	C29330	1	20. Flywheel, E-Type 4-speed	C37105	1
8. Gear, Oil Pump Drive, 5.3 (has teeth)	C32185	1	21. Flywheel Ring Gear Only, E-Type 4-speed	04-2000	1
9. Gear, Oil Pump Drive, 6.0 (no teeth)	JA-EBC4240	1	22. Dowel, 4-speed	C2313	2
			23. Dowel, Automatic	C6862	2
			24. Lock Plate, automatic and 4-speed	C4810	1
			25. Reinforcing Plate, automatic only	C6861	1
			26. Flywheel Bolt, 4-speed	C4855	10
			27. Flywheel Bolt, automatic	C6839	10

Engine



V-12 Valve Train

Description	Part No.	Qty. Req'd.	Description	Part No.	Qty. Req'd.
1. Tappet/Cam Follower _____	C44010	12	32. Valve Stem Seal _____	JA-EBC3531	24
2. Tappet/Cam Follower with .060" removed for use with wild cams; negates need for super-thick shims ____	C44010/1	12	33. Spring Seat _____	C27481	24
Adjusting Shims:			34. Valve Guide Clip _____	JA-EBC1782	24
3. .085" _____	C2243A	A/R	Valve Guides:		
4. .086" _____	C2243B	A/R	35. Intake, all, Standard (.502" o.d.) _____	01-3060	A/R
5. .087" _____	C2243C	A/R	36. Intake, all, .002" oversize (.504" o.d.) ____	01-3060.002	A/R
6. .088" _____	C2243D	A/R	37. Intake, all, .005" oversize (.507" o.d.) ____	01-3060.005	A/R
7. .089" _____	C2243E	A/R	38. Intake, all, .008" oversize (.510" o.d.) ____	01-3060.008	A/R
8. .090" _____	C2243F	A/R	39. Exhaust, pre-H.E., Standard (.502" o.d.) __	01-3110	A/R
9. .091" _____	C2243G	A/R	40. Exhaust, pre-H.E., +.002" (.504" o.d.) ____	01-3110.002	A/R
10. .092" _____	C2243H	A/R	41. Exhaust, pre-H.E., +.005" (.507" o.d.) ____	01-3110.005	A/R
11. .093" _____	C2243I	A/R	42. Exhaust, H.E., +.002" (.504" o.d.) ____	01-3115.002	A/R
12. .094" _____	C2243J	A/R	43. Exhaust, H.E., +.005" (.507" o.d.) ____	01-3115.005	A/R
13. .095" _____	C2243K	A/R	Note: We stock only manganese-bronze valve guides that are the best made world-wide. They are grooved to accept stem seals and retaining clips.		
14. .096" _____	C2243L	A/R	44. Valve Seat, Intake, all _____	01-3250	12
15. .097" _____	C2243M	A/R	45. Valve Seat, Exhaust, pre-H.E. _____	01-3260	12
16. .098" _____	C2243N	A/R	46. Valve Seat, Exhaust, H.E. _____	JA-EAC3641	12
17. .099" _____	C2243O	A/R	Note: We stock world-class-quality valve seats that are 35-40 R _c hardness and appropriate for unleaded fuels.		
18. .100" _____	C2243P	A/R	47. Valve, Intake, Pre-H.E. _____	01-3100	12
19. .101" _____	C2243Q	A/R	48. Valve, Intake, H.E. _____	01-3101	12
20. .102" _____	C2243R	A/R	49. Valve, Exhaust, Pre-H.E. _____	01-3090	12
21. .103" _____	C2243S	A/R	50. Valve, Exhaust, H.E. _____	01-3091	12
22. .104" _____	C2243T	A/R			
23. .105" _____	C2243U	A/R			
24. .106" _____	C2243V	A/R			
25. .107" _____	C2243W	A/R			
26. .108" _____	C2243X	A/R			
27. .109" _____	C2243Y	A/R			
28. .110" _____	C2243Z	A/R			
29. Keepers _____	JA-EBC2997	48			
30. Spring Retainer/Collars _____	C27480	24			
31. Valve Spring Set (one set req'd per head)	01-3130	2			



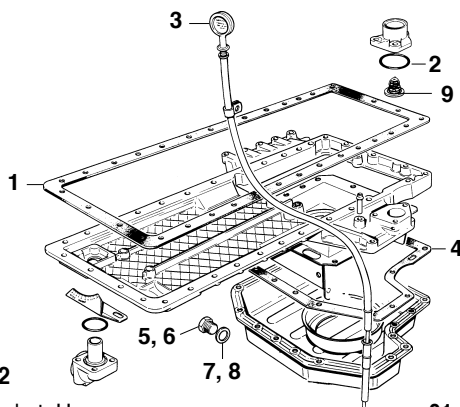
Oil Sump & Oil Pump Assembly

1. Pump Assembly _____ **JA-EBC3163**
2. Drive Gear, 5.3 (has teeth) _____ **C32185**
3. Drive Gear, 6.0 (has no teeth) _____ **JA-EBC4240**

Note: JA-EBC3163 is as fitted to 1991-on 5.3 and 6.0 Liter cars. When replacing a pre-1991 pump, the JA-EBC4240 drive gear must also be used but the conversion is a bolt-on proposition. When replacing a V-12 E-Type or XJ-12 pump prior to engine 7P.32246, the engine block must be professionally modified. We have an illustrated instruction sheet available.

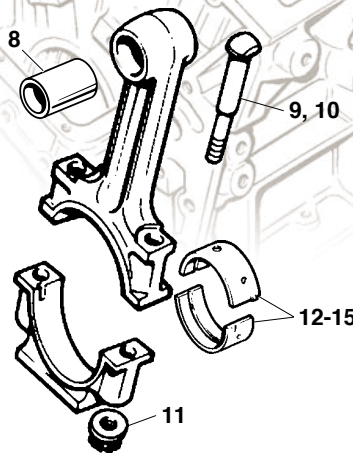
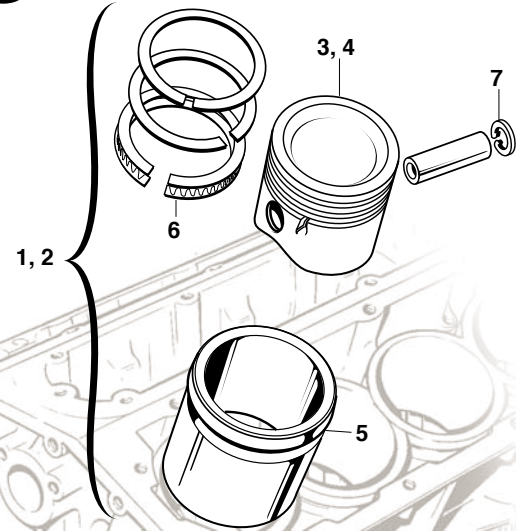
Oil Sump, V-12 E-Type Only

4. Sump Gasket _____ **01-JH485**
5. Dipstick Bracket, 7S.4664-on _____ **C37005**
6. Drain Plug _____ **C23435**
7. Drain Plug, oversize, for damaged threads _____ **C23435/1**
8. Copper Washer, Standard Type _____ **C2296-1**
9. Washer, Upgraded, with Internal Seal _____ **17-1998**
10. Washer, dished & serrated, 32 Required _____ **C30075-2**



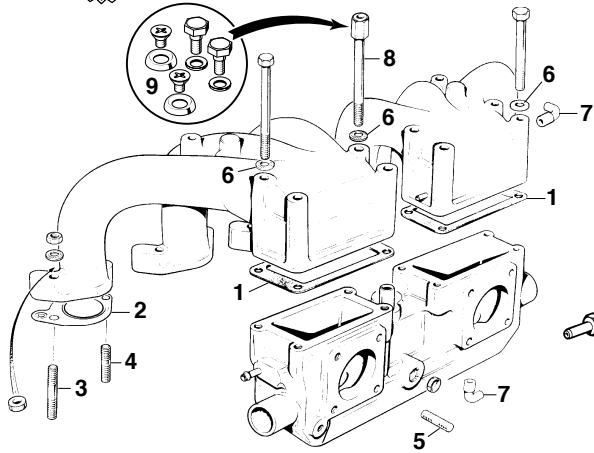
Oil Sump, All Other V-12

1. Sump Gasket, Upper _____ **01-JH485**
2. O-Ring _____ **JA-EAC8101**
3. Dipstick _____ **C44151**
4. Sump Gasket, Lower _____ **01-EBC9623**
5. Drain Plug _____ **C23435**
6. Drain Plug, oversize, for damaged threads _____ **C23435/1**
7. Copper Washer, Standard Type _____ **C2296-1**
8. Washer, Upgraded, with Internal Seal _____ **17-1998**
9. Oil Pressure Relief Valve, with "Relief" oil cooling _____ **C37888**



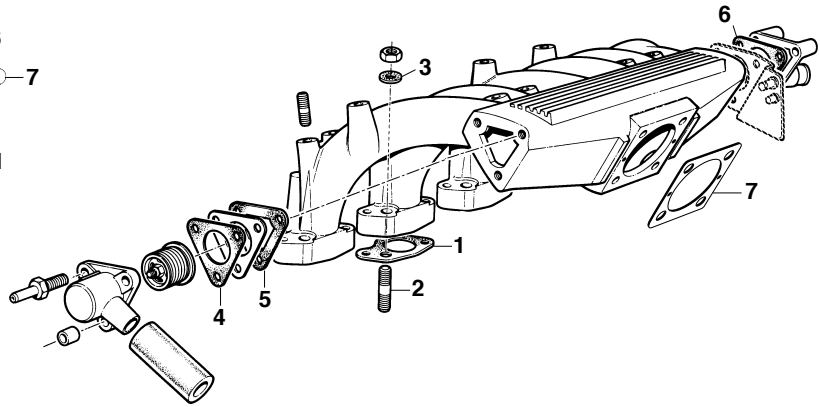
Pistons and Components, 5.3 V-12

Description	Part No.	Qty. Req'd.
1. Piston and Sleeve Assembly, pre-H.E. _____	01-1310	12
2. Piston and Sleeve Assembly, H.E. _____	01-1311	12
3. Piston only, pre-H.E. _____	01-1320	12
Note: 7.8:1 compression ratio.		
4. Piston only, H.E. _____	01-1321	12
Note: Pistons are supplied with rings, wrist pins and circlips.		
5. Sleeve Only _____	01-1325	12
6. Piston Ring Sets, Deves, all V-12, Std. _____	01-1331	1
7. Piston Pin Circlip only _____	C29699	24
8. Pin Bushing in Rod _____	C29308	12
9. Rod Bolt, E-Type, Series I XJ-12, Series II XJ-12 to engine 7P.27698, XJ-S to engine 8S.2574 _____	C33271	24
10. Rod Bolt, Series II XJ-12 from engine 7P.27699, XJ-S from engine 8S.2575 _____	C43809	24
11. Rod Nut, all _____	JA-EAC5541	24
12. Rod Bearing Set, standard size _____	01-1080.000	A/R
13. Rod Bearing Set, +.010" _____	01-1080.010	A/R
14. Rod Bearing Set, +.020" _____	01-1080.020	A/R
15. Rod Bearing Set, +.030" _____	01-1080.030	A/R



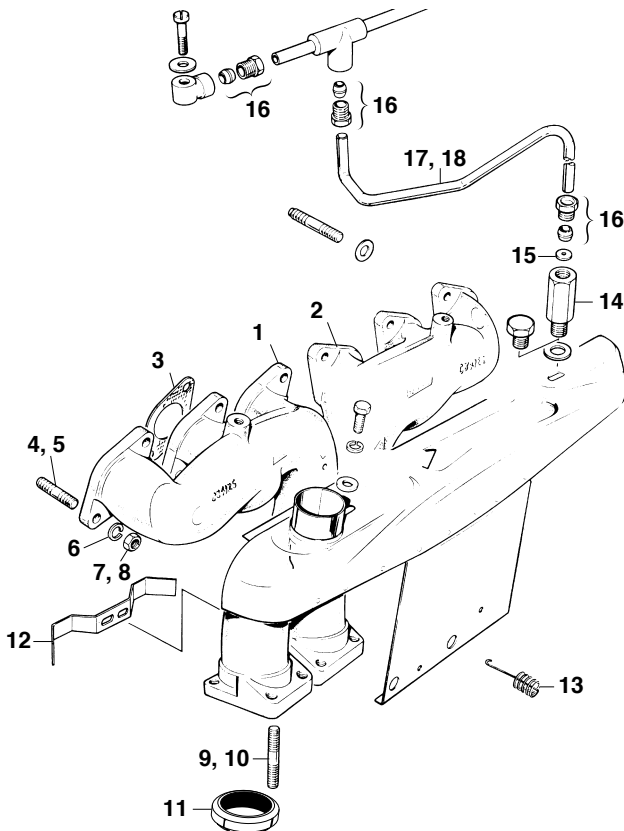
Intake Manifold, Carburetted

Description	Part No.	Qty.	Req'd.
1. Plenum Gasket _____	C34112	4	
2. Gasket, Intake Runners _____	C34063	12	
3. Stud _____	C8511	12	
4. Stud _____	C24025	12	
5. Stud, to Carburetors _____	C18232	16	
6. Special Washer _____	C30075-2	A/R	
7. Elbow _____	JA-EAC7965	A/R	
8. Special Stud, for Rainshield, E-Type _____	C35728	4	
9. Hardware Kit, V-12 E-Type Rainshields _____	16-4400	1	



Intake Manifold, Fuel Injected

Description	Part No.	Qty.	Req'd.
1. Gasket, to Cylinder Head _____	JA-NNA3020BA	2	
Note: One gasket per bank now replaces 6 individuals.			
2. Stud, Manifold to Cylinder Head _____	JA-TE108091/J	24	
3. Special Washer _____	C30075-2	24	
4. Gasket _____	JA-EAC9761	2	
5. Gasket _____	JA-EAC9817	2	
Note: On post-1989 cars w/o decleration valve, JA-EAC9761 not required.			
6. Gasket _____	JA-EAC9819	2	
7. Gasket, Manifold to Throttle Housing _____	JA-EBC9635	2	
Note: Also see Fuel Injection section for related items.			



Exhaust Manifolds

Description	Part No.	Qty.	Req'd.
1. Exhaust Manifolds, V-12 E-Type from engine 7S.8179: LH Front or RH Rear _____	07-1510	2	
2. RH Front or LH Rear _____	07-1520	2	
Note: Please call for availability of other, later, manifolds.			
3. Gasket, Manifolds to Heads, all _____	JA-EBC10199	12	

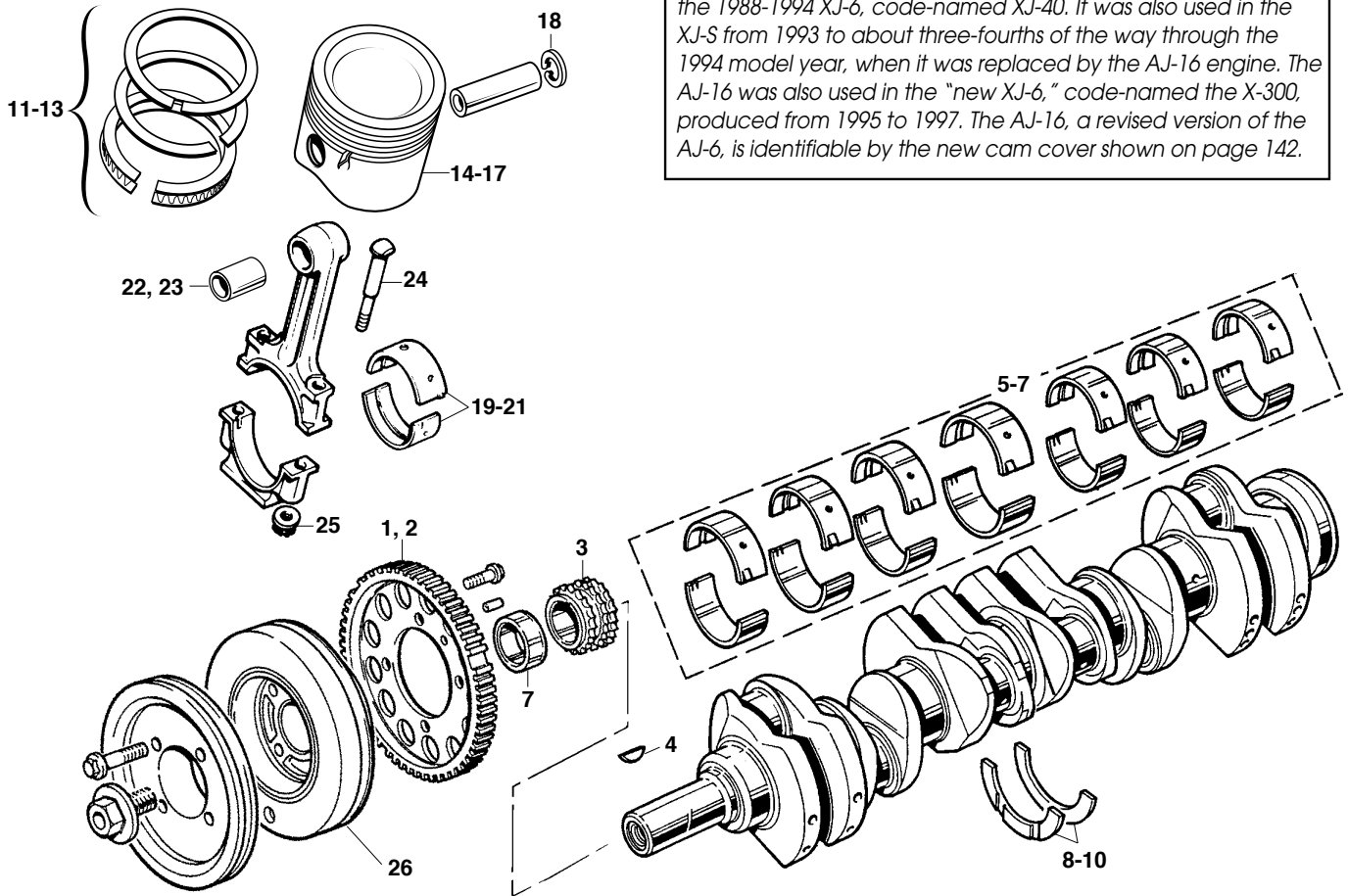
Stud, Manifolds to Heads:

4. E-Type, XJ-S, XJ-12 Series I & II, XJ-S HE to eng. 8S24174 _____	C25321	24	
5. H.E. from engine 8S24175 _____	JA-TE108051/J	24	
6. Washer _____	JA-FG105X	24	
7. Nut, E-Type, XJ-S, XJ-12 Series I & II, XJ-S HE to eng. 8S24174 _____	07-1010	24	
8. Nut, H.E. from engine 8S24175 _____	JA-EAC5277	24	
9. Stud, to downpipes, without catalyst _____	C2369	16	
10. Stud, to downpipes, with catalyst _____	JA-EAC3823	16	
11. Seal, Downpipe, all _____	JA-EBC9388	4	
12. Bracket for Heatshield, V-12 E-Type _____	C35944	2	
13. Spring, on Heatshield, V-12 E-Type _____	C36130	2	

Components for V-12 E-Type from engine 7S.8179, plus Carburetted XJ-12:

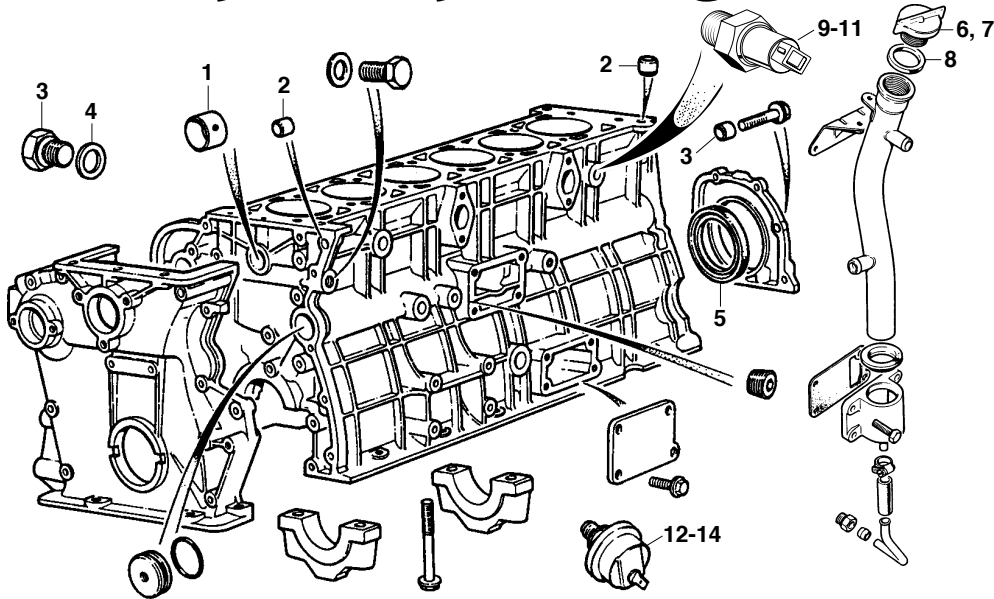
14. Adaptor _____	C39107	2	
15. Spacer _____	C39666	2	
16. Nut and Ferrule Kit (16 pieces) _____	C34706	1	
17. Pipe, RH _____	C39105	1	
18. Pipe, LH _____	C39106	1	

Note: The four-valve-per-cylinder "AJ-6" engine was first used in the 1988-1994 XJ-6, code-named XJ-40. It was also used in the XJ-S from 1993 to about three-fourths of the way through the 1994 model year, when it was replaced by the AJ-16 engine. The AJ-16 was also used in the "new XJ-6," code-named the X-300, produced from 1995 to 1997. The AJ-16, a revised version of the AJ-6, is identifiable by the new cam cover shown on page 142.



AJ-6 / AJ-16 Crankshaft

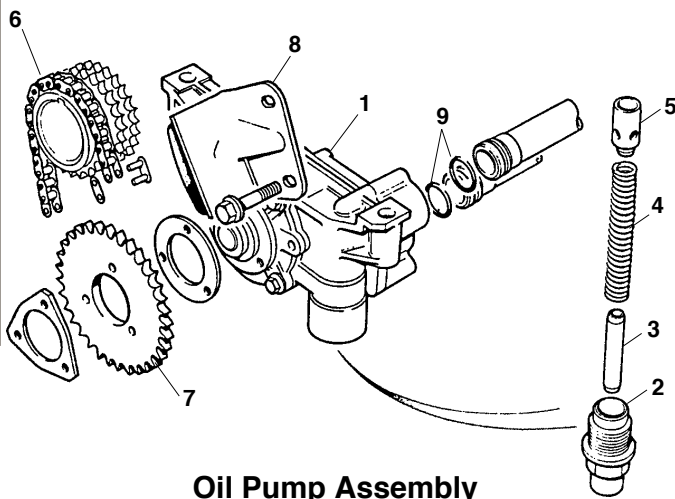
1. Timing Ring, AJ-6 engine _____	JA-EAC6850	15. Pistons, 3.6 Liter, 3.6 Liter, +.020" _____	01-1245.020
2. Timing Ring, AJ-16 engine _____	JA-EBC9853	16. Pistons, 3.6 Liter, 4.0 Liter AJ-6, Standard _____	01-1246.000
3. Sprocket, all _____	JA-EAC2456	17. Pistons, 3.6 Liter, 4.0 Liter AJ-6, +.020" _____	01-1246.020
4. Woodruff Key, all _____	JA-CAM1978J	18. Circlip, per each, all _____	C29699
5. Main Bearing Sets, AJ-6, Standard Size _____	JA-JLM1817/S	19. Rod Bearing Set, AJ-6, Standard _____	01-1013.000
6. Main Bearing Sets, AJ-6, +.010" _____	JA-JLM1817/10	20. Rod Bearing Set, AJ-6, +.010" _____	01-1013.010
7. Main Bearing Sets, AJ-6, +.020" _____	JA-JLM1817/20	21. Rod Bearing Set, AJ-6, +.020" _____	01-1013.020
8. Thrust Washer Pairs, all, Standard _____	01-1100	22. Pin Bushings, 3.6 Liter, set of six _____	01-1112
9. Thrust Washer Pairs, all, +.010" _____	C34697	23. Pin Bushings, all 4.0 Liter, sold per each _____	JA-EAC6567
10. Thrust Washer Pairs, all, +.014" _____	C34697-1	24. Rod Bolt, sold per each, all _____	JA-EAC1027
11. Deves Piston Ring Set, AJ-6, Standard Bore _____	01-1281.000	25. Rod Nut, sold per each, all _____	JA-EAC5541
12. Deves Piston Ring Set, AJ-6, +.020" _____	01-1281.020	26. Crankshaft Damper, 3.6-liter, rebuilt _____	01-0104
13. Deves Piston Ring Set, AJ-6, +.030" _____	01-1281.030	26. Crankshaft Damper, 4.0-liter, four-groove belt, rebuilt _____	01-0105
14. Pistons, 3.6 Liter, Standard _____	01-1245.000	26. Crankshaft Damper, 4.0-liter, five-groove, rebuilt _____	01-0104



Engine Block Components

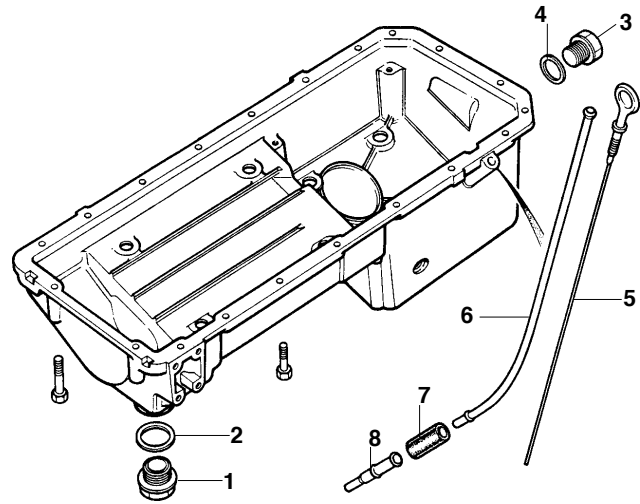
- | | | | |
|---|-------------------|---|---------------------|
| 1. Bushing _____ | JA-EAC2522 | 7. Oil Filler Cap on cam cover, AJ-6 eng. 179452-on | JA-EBC8087 |
| 2. Dowel, timing cover alignment, two required _____ | JA-EBC9705 | 8. Seal, under EAC8087 cap _____ | C42511 |
| 3. Drain Plug, coolant in block _____ | JA-EAC3972 | 9. Knock Sensor, XJ-S w/ AJ-16 to engine B101198 | JA-DBC4907 |
| 4. Special Washer, block drain plug _____ | JA-EBC9044 | 10. Knock Sensor, XJ-S w/ AJ-16 eng. B101199-on | JA-LHE1692AA |
| 2. Dowel, cylinder head alignment, two required _____ | JA-EBC9705 | 11. Knock Sensor, XJ-6 (X300) with AJ-16 _____ | JA-LHE1692AA |
| 2. Dowel, seal housing alignment, two required _____ | JA-EBC9705 | 12. Oil Pressure Sender, 3.6-Liter XJ-40 _____ | C46272 |
| 5. Rear Main Oil Seal _____ | JA-EAC4974 | 13. O/P Sender, 4.0 XJ-40; X300 to eng. B.134019 | JA-JLM20791 |
| 6. Oil Filler Cap, all 3.6, 4.0 AJ-6 to engine 179541 | JA-EAC8087 | 14. O/P Sender, X300 from engine B.134020 | JA-LNA5642CA |

Engine



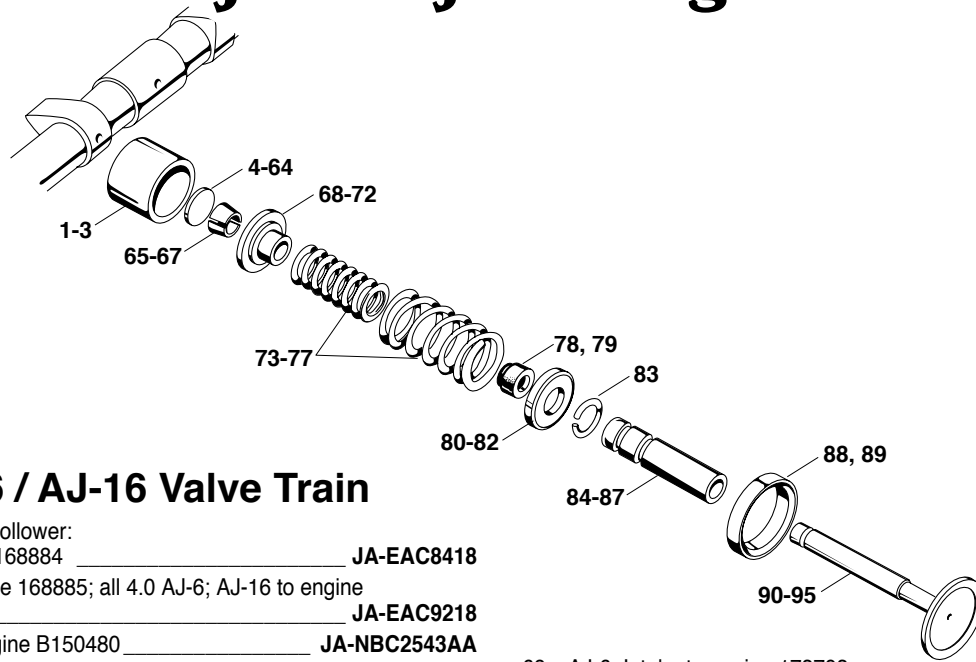
Oil Pump Assembly

- | | |
|--|---------------------|
| 1. Oil Pump _____ | JA-NBB1760AA |
| 2. Plug, Oil Relief Valve _____ | JA-EAC4328 |
| 3. Support Mandrel _____ | JA-EAC4327 |
| 4. Spring, Oil Relief Valve _____ | JA-EAC4380 |
| 5. Plunger, Oil Relief Valve _____ | JA-EAC4326 |
| 6. Oil Pump Chain _____ | JA-JLM1279 |
| 7. Oil Pump Sprocket _____ | JA-EAC6395 |
| 8. Tensioner Blade _____ | JA-EBC3823 |
| 9. O-Ring to Oil Pipes, 4 required _____ | JA-EAC5536 |



Oil Sump

- | | |
|--|-------------------|
| 1. Access Plug to Oil Relief Valve, XJ-40 only _____ | JA-EAC5221 |
| 2. Washer on Plug, XJ-40 only _____ | C2296-22 |
| 3. Drain Plug _____ | JA-EAC3972 |
| 4. Washer on Drain Plug, one-time use only _____ | JA-EBC9044 |
| 5. Dipstick _____ | JA-EAC9276 |
| 6. Dipstick Tube _____ | JA-EAC8958 |
| 7. Dipstick Sleeve _____ | JA-EBC2084 |
| 8. Dipstick Location Tube _____ | JA-EAC2258 |



AJ-6 / AJ-16 Valve Train

1. Tappet/Cam Follower:
3.6 to engine 168884 _____ **JA-EAC8418**
2. 3.6 from engine 168885; all 4.0 AJ-6; AJ-16 to engine B150479 _____ **JA-EAC9218**
3. AJ16 from engine B150480 _____ **JA-NBC2543AA**

Valve Adjusting Shims, AJ-6:

Size	Part No.	Size	Part No.
4. .0850"	JA-EBC11360-02	35. .1005"	JA-EBC11360-33
5. .0855"	JA-EBC11360-03	36. .1010"	JA-EBC11360-34
6. .0860"	JA-EBC11360-04	37. .1015"	JA-EBC11360-35
7. .0865"	JA-EBC11360-05	38. .1020"	JA-EBC11360-36
8. .0870"	JA-EBC11360-06	39. .1025"	JA-EBC11360-37
9. .0875"	JA-EBC11360-07	40. .1030"	JA-EBC11360-38
10. .0880"	JA-EBC11360-08	41. .1035"	JA-EBC11360-39
11. .0885"	JA-EBC11360-09	42. .1040"	JA-EBC11360-40
12. .0890"	JA-EBC11360-10	43. .1045"	JA-EBC11360-41
13. .0895"	JA-EBC11360-11	44. .1050"	JA-EBC11360-42
14. .0900"	JA-EBC11360-12	45. .1055"	JA-EBC11360-43
15. .0905"	JA-EBC11360-13	46. .1060"	JA-EBC11360-44
16. .0910"	JA-EBC11360-14	47. .1065"	JA-EBC11360-45
17. .0915"	JA-EBC11360-15	48. .1070"	JA-EBC11360-46
18. .0920"	JA-EBC11360-16	49. .1075"	JA-EBC11360-47
19. .0925"	JA-EBC11360-17	50. .1080"	JA-EBC11360-48
20. .0930"	JA-EBC11360-18	51. .1085"	JA-EAC5013-49
21. .0935"	JA-EBC11360-19	52. .1090"	JA-EAC5013-50
22. .0940"	JA-EBC11360-20	53. .1095"	JA-EAC5013-51
23. .0945"	JA-EBC11360-21	54. .1100"	JA-EAC5013-52
24. .0950"	JA-EBC11360-22	55. .1105"	JA-EAC5013-53
25. .0955"	JA-EBC11360-23	56. .1110"	JA-EAC5013-54
26. .0960"	JA-EBC11360-24	57. .1115"	JA-EAC5013-55
27. .0965"	JA-EBC11360-25	58. .1120"	JA-EAC5013-56
28. .0970"	JA-EBC11360-26	59. .1125"	JA-EAC5013-57
29. .0975"	JA-EBC11360-27	60. .1130"	JA-EAC5013-58
30. .0980"	JA-EBC11360-28	61. .1135"	JA-EAC5013-59
31. .0985"	JA-EBC11360-29	62. .1140"	JA-EAC5013-60
32. .0990"	JA-EBC11360-30	63. .1145"	JA-EAC5013-61
33. .0995"	JA-EBC11360-31	64. .1150"	JA-EAC5013-62
34. .1000"	JA-EBC11360-32		

Valve Adjusting Shims, AJ-16:

JA-NBC2542AA2 to JA-NBC2542AA52; size range is .085" to .110" by increments of .0005"

Keepers:

65. AJ-6, Intake, two required per valve _____ **JA-EBC2997**
66. AJ-6, Exhaust, two required per valve _____ **JA-EBC2998**
67. AJ-16, same intake or exhaust, two per valve _____ **JA-EBC3950**

Spring Retainers/Collars:

68. AJ-6, Intake to engine 173793 _____ **JA-EAC4709**
69. AJ-6, Intake from engine 173794 _____ **JA-EBC3806**
70. AJ-6, Exhaust to engine 173793 _____ **JA-EAC7227**
71. AJ-6, Exhaust from engine 173794 _____ **JA-EBC3807**
72. AJ-16, Intake or Exhaust _____ **JA-EBC3951**

Valve Springs:

73. All 3.6, AJ-6 4.0 to engine 173793, each _____ **JA-EBC4871**
74. AJ-6 4.0 engine 173794 to 175210, each _____ **JA-EBC11034**
75. AJ-6 4.0 from engine 175211, each _____ **JA-NBB2535AA**
76. AJ-16, engine B100136 to B131240 _____ **JA-NBC2535AA**
77. AJ-16, engine B131241-on _____ **JA-NBC2535AB**
78. Stem Seal, (12 fitted to AJ-6 engine 163523, 24 after) _____ **JA-EBC3531**
79. Stem Seal, AJ-16, 24 required _____ **JA-EBC3956**

Valve Spring Seats:

80. All 3.6, AJ-6 4.0 to engine 163522 _____ **C27481**
81. AJ-6 4.0 from engine 163523-on _____ **JA-EBC4902**
82. AJ-16 _____ **JA-NBC2528AA**
83. Valve Guide Clip, AJ-6, 24 req'd _____ **JA-EBC1782**

Valve Guides (same guide fits intake or exhaust), AJ-6:

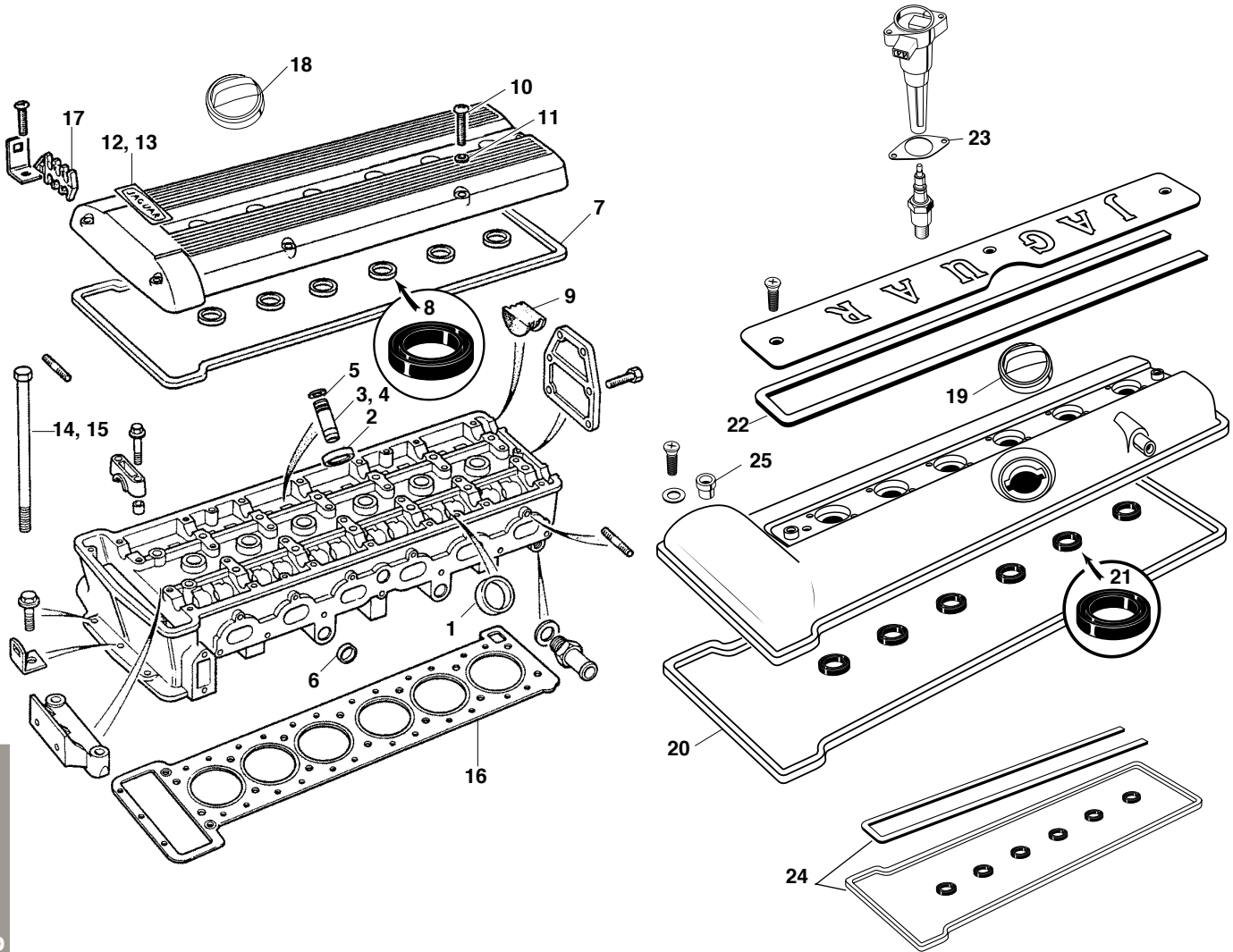
84. Standard Diameter (.502" o.d.) _____ **01-3060**
85. + .002" (.504" o.d.) _____ **01-3060.002**
86. + .005" (.507" o.d.) _____ **01-3060.005**
87. + .008" (.510" o.d.) _____ **01-3060.008**

Note: We stock world-class-quality valve seats that are 35-40 R hardness and appropriate for unleaded fuels.

88. Valve Seats, AJ-6:, Intake, all _____ **JA-EAC6437**
89. Valve Seats, Exhaust, all _____ **JA-EBC4198**

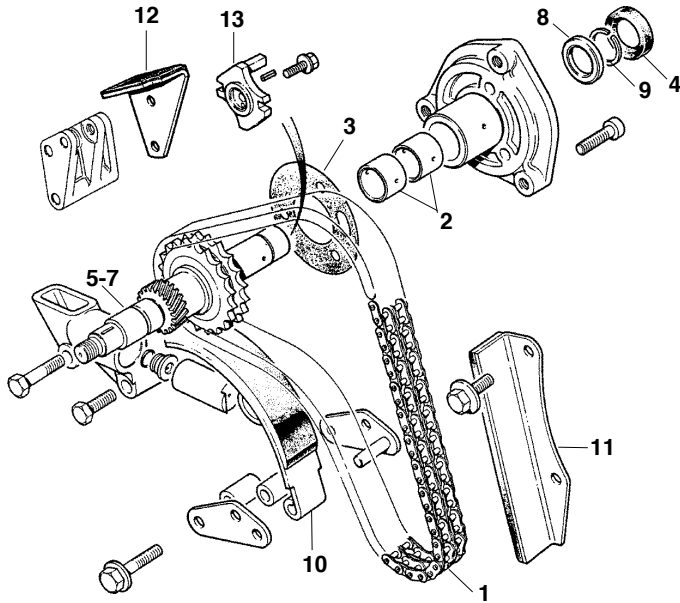
Valves:

90. AJ-6, Intake _____ **JA-EAC2909**
91. AJ-6, Exhaust _____ **JA-EAC7255**
92. AJ-16 non supercharged, Intake _____ **JA-EBC3953**
93. AJ-16 non supercharged, Exhaust _____ **JA-EBC8633**
94. AJ-16 supercharged, Intake _____ **JA-NBC2533AA**
95. AJ-16 supercharged, Exhaust _____ **JA-NBD2532AA**



Cylinder Head

- | | | | |
|---|---------------------|--|---------------------|
| 1. Intake Valve Seat, AJ-6 _____ | JA-EAC6437 | 14. Bolt, Head to Block, 14 required, AJ-6 _____ | JA-EBC1771 |
| 2. Exhaust Valve Seat, AJ-6 _____ | JA-EBC4198 | 15. Bolt, Head to Block, 14 req'd, AJ-16 _____ | JA-JZB100053 |
| 3. Valve Guide, Intake, AJ-6 _____ | See Page 141 | 16. Cylinder Head Gasket _____ | See Page 153 |
| 4. Valve Guide, Exhaust, AJ-6 _____ | See Page 141 | 17. Clip, Spark Plug Wires, AJ-6 _____ | JA-EAC5045 |
| 5. Circlip, Valve Guides, 24 required, AJ-6 _____ | JA-EBC1782 | 18. Oil Filler Cap, AJ-6 from engine 179542 _____ | JA-EBC8087 |
| 6. Core Plug, 6 required, all _____ | C16862-3 | Note: See page 140 for earlier filler cap not on cam cover. | |
| 7. Gasket, Cam Cover, AJ-6 _____ | JA-EAC2912 | Cam Cover, AJ-16 | |
| 8. Seal, Spark Plug Boss, 6 required, AJ-6 _____ | JA-EAC4049 | 19. Oil Filler Cap _____ | JA-EBC8087 |
| 9. Rear Sealing Plug _____ | C30431 | 20. Cam Cover Seal _____ | JA-NBC2525AA |
| Note: The above three items are available as a kit: 01-HL702 | | | |
| 10. Screw, Cover to Head, 7 required, AJ-6 _____ | JA-SE106601J | 21. Spark Plug Boss Seal, 6 required _____ | JA-NBC2579AA |
| 11. Washer, 7 required, AJ-6 _____ | JA-EBC1294 | 22. Coil Cover Seal _____ | JA-NBC2530AA |
| 12. "Jaguar" Sticker, 3.6 Liter XJ-40 _____ | JA-EAC9679 | 23. Coil Gasket, 6 required _____ | JA-LHF1719AA |
| 13. "Jaguar" Sticker, 4.0 XJ-40, all XJ-S w/ AJ-6 _____ | JA-EBC3888 | 24. Cam Cover Seal Kit _____ | 01-HM5061 |
| | | 25. Isolator, 13 required _____ | JA-NBC2575CA |

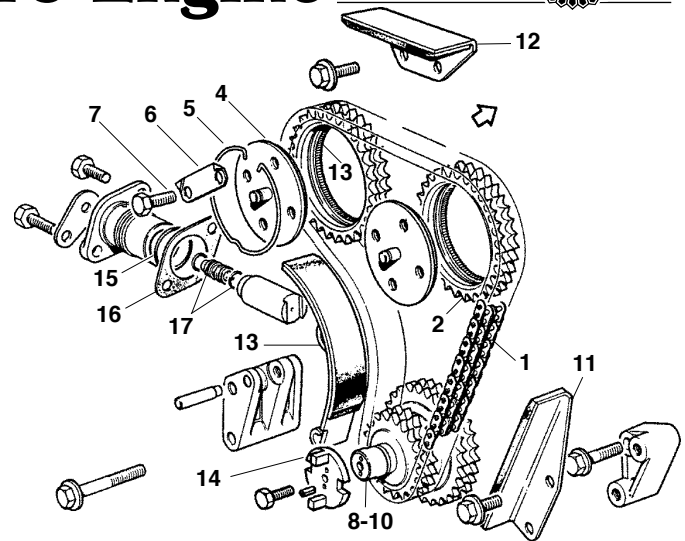


Auxiliary Shaft and Primary Chain

- 1. Primary Timing Chain _____ **JA-EAC4519**
- 2. Bushing, Auxiliary Shaft, 2 required _____ **JA-EAC2522**
- 3. Gasket _____ **JA-EAC4038**
- 4. Oil Seal, Auxiliary Shaft _____ **JA-EAC6156**

Auxiliary Shaft (parts must be replaced as a unit):

- 5. Drive Dog _____ **JA-EBC3396**
- 6. Shaft _____ **JA-NBB1963AA**
- 7. Spiral Pin, 2 required _____ **JA-EBC3412**
- 8. Thrust Washer _____ **JA-EAC3455**
- 9. Circlip _____ **JA-CR120225J**
- 10. Chain Tensioner _____ **JA-EAC4527**
- 11. Chain Damper, Lower _____ **JA-EAC4533**
- 12. Chain Damper, Upper _____ **JA-EAC6766**
- 13. Driving Dog, Auxiliary Shaft _____ **JA-EBC3396**



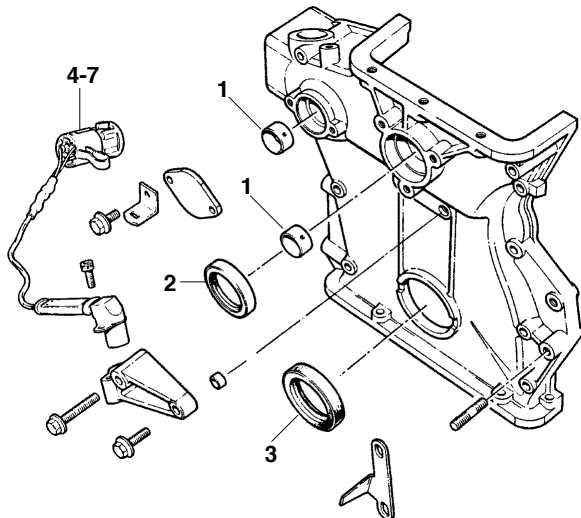
Intermediate Shaft and Chain

- 1. Secondary Timing Chain _____ **JA-EAC4520**
 - 2. Camshaft Sprocket, new style _____ **JA-NBB2549AA**
 - 3. Bolts, 4 required with each new-style gear _____ **JA-JZS100082**
- Note: New-style gear fitted as standard to AJ-16.*
- 4. Camshaft Coupling, 2 required (NLS) _____ **C33889**
 - 5. Circlip, Securing Coupling, 2 required _____ **C30767**
 - 6. Lock Tab, Securing Coupling, 4 required _____ **C33917**
 - 7. Setscrew, Securing Coupling, 8 required _____ **JA-JZB100042**

Auxiliary Shaft (parts must be replaced as a unit):

- 8. Drive Dog _____ **JA-EBC3398**
- 9. Shaft _____ **JA-NBB1953AA**
- 10. Spiral Pin, 2 required _____ **JA-EBC3412**
- 11. Damper, Lower Chain _____ **JA-EAC4534**
- 12. Damper, Upper Chain _____ **JA-EAC4535**
- 13. Tensioner Blade _____ **JA-EAC4536**
- 14. Drive Coupling _____ **JA-EBC3398**
- 15. O-Ring _____ **JA-EAC4540**
- 16. Gasket _____ **JA-EAC4557**
- 17. O-Ring, two required _____ **JA-EAC6779**

Engine

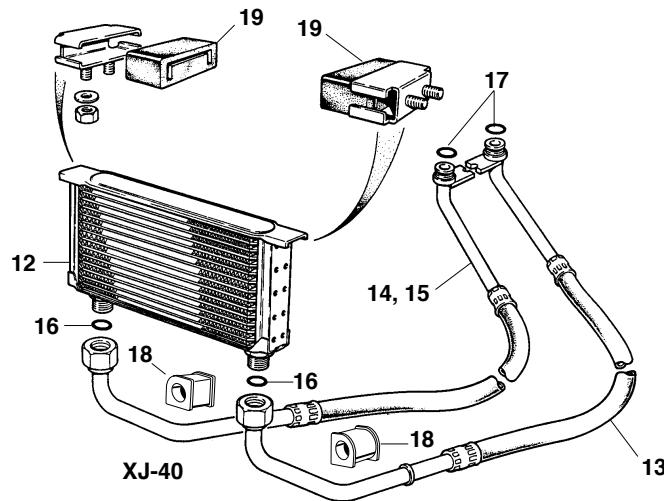
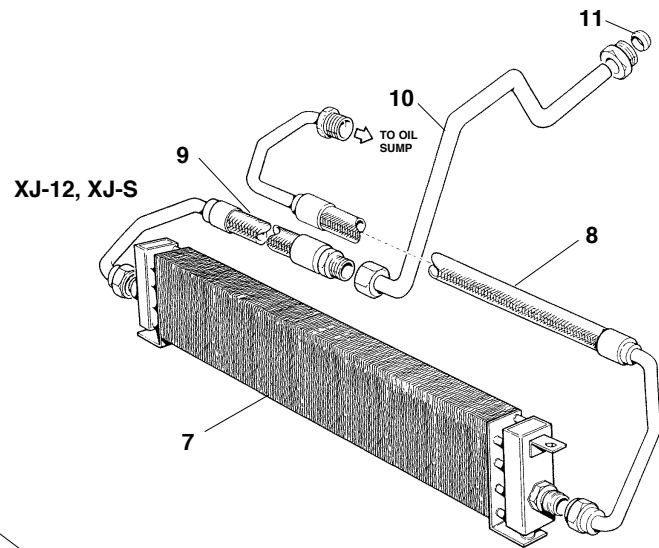
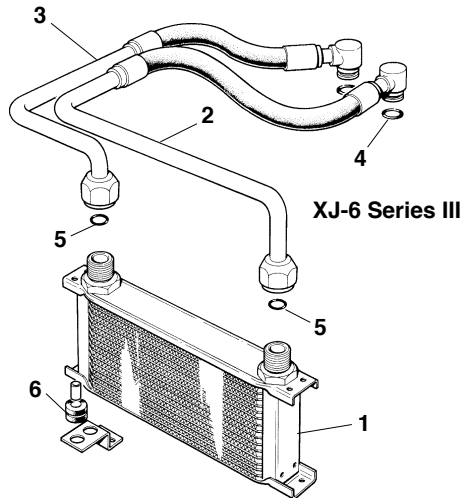


Timing Cover

- 1. Timing Cover Bushing, 2 required _____ **JA-EAC2522**
- 2. Oil Seal, Intermediate Shaft _____ **JA-EAC5721**
- 3. Oil Seal, Crankshaft _____ **JA-EAC7954**

Crankshaft/Engine Speed Sensor:

- 4. XJ-40 To VIN 629285 (mid 1991 model year) _____ **JA-DBC2139**
- 5. XJ-40 From VIN 629286 (mid 1991 model year) _____ **JA-DBC11501**
- 5. XJ-S 4.0 with AJ-6 engine _____ **JA-DBC11501**
- 6. XJ-S 4.0 with AJ-16 to engine B101198 _____ **JA-DBC12296**
- 7. XJ-S 4.0 with AJ-16, Engine B101199-on, all X300 XJ-6 _____ **JA-LHE1640AA**



Oil Coolers and Hoses

XJ-6 Series III

- | | |
|---------------------------------------|-------------------|
| 1. Oil Cooler _____ | JA-CAC4540 |
| 2. Oil Feed Pipe (Left Side) _____ | JA-CBC1437 |
| 3. Oil Return Pipe (Right Side) _____ | JA-CBC1438 |
| 4. O-Ring at Filter (2 Req.) _____ | JA-CAC5118 |
| 5. O-Ring at Cooler (2 Req.) _____ | JA-KRC1160 |
| 6. Rubber Mount (4 Req.) _____ | JA-CBC1448 |

XJ-12, XJ-S, 5.3-Liter V-12, 1973-1991

- | | |
|---|-------------------|
| 7. Oil Cooler _____ | C43923 |
| 8. Hose, Oil Cooler Outlet to Sump _____ | C38075 |
| 9. Hose, Oil Cooler Inlet to Pipe _____ | C38074 |
| 10. Pipe, Filter to Oil Cooler Inlet Hose _____ | JA-EAC1380 |
| 11. Olive _____ | C37133-9 |

Please call for XJ-S/XJ-12 6.0 and XJ-S 4.0 cooler components.

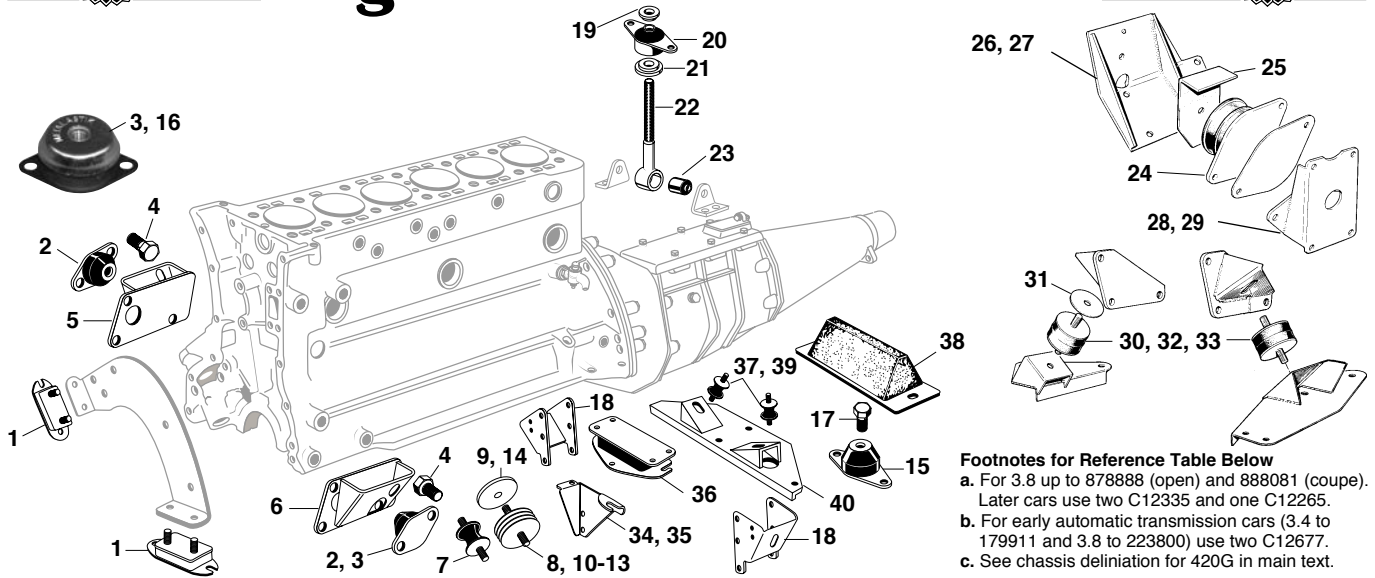
XJ-6 (XJ-40), 1988-1992

- | | |
|--|-------------------|
| 12. Oil Cooler _____ | JA-CAC8509 |
| 13. Oil Feed Pipe, all _____ | JA-CBC8661 |
| 14. Oil Return Pipe, to VIN 594575 (thru 1989) _____ | JA-CBC1309 |
| 15. Oil Return Pipe, VIN 594576-on (from 1990) _____ | JA-CBC8662 |
| 16. O-Rings at Cooler, 2 required _____ | JA-KRC1160 |
| 17. O-Rings at Engine, 2 required _____ | JA-CAC5118 |
| 18. Insulators for Pipes _____ | JA-CAC5537 |
| 19. Oil Cooler Rubber Mounts, 2 required _____ | JA-CAC8444 |

20. XJ-40 Oil Cooler Delete Kit:

1993 and later XJ-40s were not equipped with oil coolers, as Jaguar deemed them—and their troublesome hoses—unnecessary. We've put together a kit of factory parts to convert an earlier car. Kit contains two connectors, four o-rings, one stud, one nut and one bypass "loop."

- | | |
|-----------------------------------|----------------|
| XJ-40 Oil Cooler Delete Kit _____ | 01-2500 |
|-----------------------------------|----------------|



Front Engine Mounts, Six Cylinder, 1949-1994:

1. Front Mount, early XK-120, two required _____ **C428**
2. Front Mount, later XK-120, XK-140, XK-150, E-Types, MK I, MK II, an 3.4S/3.8S, 420, 420G (up to CH G1D54617 RHD & G1D77409 LHD) and MK X, two required _____ **C4794**
3. As above, but heavy duty version. For high performance work, stock Jaguar mounts are often overtaxed. These mounts are up to the task. _____ **C4794HD**
4. Bolt, Secures C4794 Mount, two req'd _____ **JA-UFS150/7R**
5. Engine Mount Bracket, E-Type Series I & II, Right _____ **C15850**
6. Engine Mount Bracket, E-Type Series I & II, Left _____ **C15849**
7. Front Mount, MK VII, VIII & IX, two required _____ **C4304**
8. Front Mount, XJ-6 Series I, II & III, two required _____ **JA-JLM1009**
9. Insulator for XJ-6 Mount _____ **JA-CBC5931**

XJ-40 (1988-1994 XJ-6) Engine Mounts:

10. Right, to 683923 (mid 1993) _____ **JA-CBC1297-16**
11. Left, to 683923 (mid 1993) _____ **JA-CBC2448-13**
12. Right, from 683924 (mid 1993) _____ **JA-MMB7520BA**
13. Left, from 683924 (mid 1993) _____ **JA-MHC7521AA**
14. Insulator, "XJ-40", XJ-6 '88-'94 mounts, RH or LH _____ **JA-CBC5931**
15. Rear Engine Mount, XK-120, XK-140, XK-150, MK VII, MK VIII, MK IX (one req'd for XK-120, all others require two) _____ **C4794**
16. As above, but heavy duty version _____ **C4794HD**
17. Bolt, Secures C4794 Mount, two req'd _____ **JA-UFS150/7R**
18. Rear Engine Mount Brackets, XK-150, pair _____ **C12948/9**

Stabilizing Link on Bellhousing:

Fitted to six-cylinder E-Types, MK I, MK II, 3.4S/3.8S, 420, 420G, MK X, manual and automatic

19. Top Washer _____ **C11607**
20. Upper Mount _____ **C20217**
21. Bottom Washer _____ **C11688**
22. Link (does not include bushings) _____ **C12890**
23. Lower Bushing _____ **C10940**

Engine Mounts & Brackets, V-12:

24. Mount, V-12 E-Type, RH or LH _____ **C34911**
25. Heatshield for V-12 E-Type Mount, RH or LH _____ **C33710**
26. Mount Bracket, RH, V-12 E-Type from engine 7S.8834 _____ **C39065**
27. Mount Bracket, LH, V-12 E-Type from engine 7S.8834 _____ **C39064**
28. Mount Bracket, RH, V-12 E-Type, all _____ **C33694**
29. Mount Bracket, LH, V-12 E-Type, all _____ **C33695**
30. Mount, XJ-12 5.3 and XJ-S 5.3-Liter, RH or LH _____ **JA-JLM1010**
31. Insulator for JLM1010 mounts, RH or LH _____ **JA-CBC5931**
32. Mount, 6.0-Liter XJ-S Coupe, RH or LH _____ **JA-MHC7522AA**
33. Mount, 6.0-Liter XJ-S Convertible, RH or LH _____ **JA-CBC5734**

Transmission/Overdrive Mounts & Brackets:

34. Torque Arm, XK-120, RH fitted to LHD cars only _____ **C2371**
35. Torque Arm, XK-120, LH fitted to RHD cars only _____ **C2370**
36. Transmission Mount, early XK-120, one required _____ **C478**
37. Transmission Mount, later XK-120, two required _____ **C4304**
- Note:** XK-140 and XK-150 do not use a transmission mount.
38. Overdrive Buffer, XK-140/150, MK VII, VIII & IX _____ **C8398**

Early 3.8 E-Type Gearbox Mount:

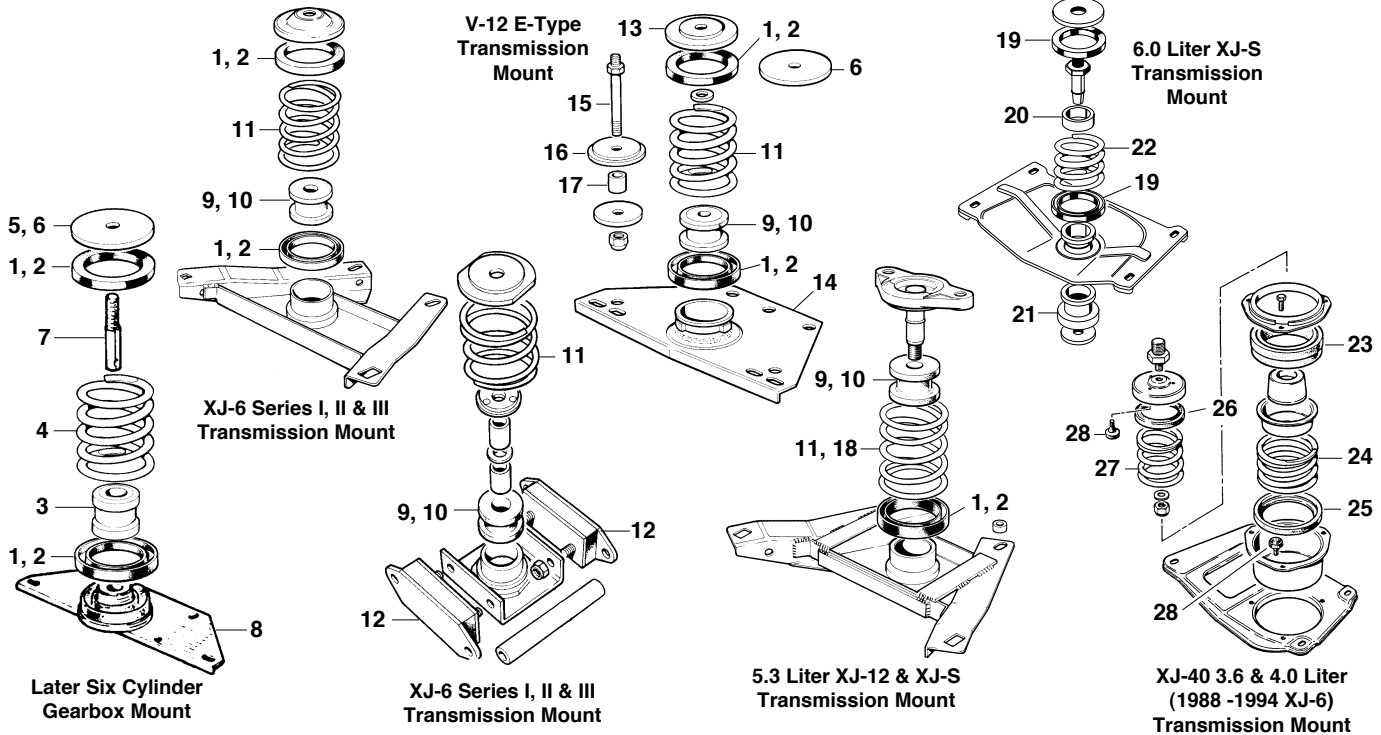
39. Transmission Mount, early 3.8 E-Type, 2 required _____ **C12677**
40. Support Bracket, early 3.8 E-Type _____ **C19430**

Note: The above two parts pertain to 3.8 roadsters to 878888 and coupes to 888081.

Engine/Gearbox Mounts Quick Reference Table

Model	Front (Qty)	Center (Qty)	Rear/Trans. (Qty)
Early XK120	C428 (2)	Anti-Torque right rear C4794 (1)	C478 (1)
Late XK120	Cent. Bolt: JA-UFS150/7R C4794 (2)	C4794 (2)	C4304 (2)
1953 - 56 XK140	Cent. Bolt: JA-UFS150/7R C4794 (2)	C4794 (2)	Overdrive Buffer C8398
1957 - 61 XK150	Cent. Bolt: JA-UFS150/7R C4794 (2)	C4794 (2)	Overdrive Buffer C8398
Model	Front (Qty)	Engine Stabilize r(Qty)	Rear/Trans. (Qty)
1961 - 64 3.8 E-Type	Cent. Bolt: JA-UFS150/7R C4794 (2)	C20217 (1) C10940 (1)	C12677 (2) ^a JA-CBC2517 (2) C12265 (1)
1965 - 71 4.2 E-Type	Cent. Bolt: JA-UFS150/7R C4794 (2)	C20217 (1) C10940 (1)	C12265 (1) ^b JA-CBC2517 (2) JA-CAC3227 (1)
1971-74 V-12 Series III	C34911 (2)	N/A	JA-CBC2517 (2) JA-CAC3227 (1)
1950 - 61 MK 7, 8 & 9	C4304 (2)	Rear of Engine C4794 (2)	Overdrive Buffer C8398 (1)
1959 - 67 Mark II, 3.8S	C4794 (2)	C20217 (1) C10940 (1)	JA-CBC2517 (2) ^b C12265 (1) ^c
Mark 10, 420, 420G ^c	C4794 (2)	C20217 (1) C10940 (1)	JA-CBC2517 (2) C12265 (1)
Model	Front (Qty)	Rear/Trans. (Qty)	
BW-8, BW-12 Trans.	JA-JLM1009 (2)	JA-CBC2517 (2)	
XJ-6 Ser. I & II	C30721 Insulator (2)	JA-CAC3227 (1)	
BW-65/66 Trans.	JA-JLM1009 (2)	C32461 (2)	
XJ-6 Ser. II & III	C30721 Insulator (2)	JA-CAC3227 (1)	
BW-12 Trans.	JA-JLM1010 (2)	JA-CBC2517 (2)	
XJ-12, XJ-S	C30721 Insulator (2)	JA-CAC3227 (1)	
TH400 Trans.	JA-JLM1010 (2)	JA-CBC2517 (1)	
XJ-12, XJ-S	C30721 Insulator (2)	JA-CAC3227 (1)	
1988-1999	JA-CBC1297-16 (Left)	JA-CBC1883 (1) lower	
XJ-40	JA-CBC2448-13 (Right)	JA-CBC1324 (1) center JA-CAC9343 (1) upper JA-CBC9344 (6) buffers	

Engine



Later Six-Cylinder Gearbox Mount:

1. Rubber Spring Seat, one required for later 3.8 E-Type, MK I, & Series I 4.2 E-Type; two required for MK II, 420, 420G, MK X, E-Type 2+2, Series II E-Type **JA-CBC2517**
2. As above, upgraded polyurethane **JA-CBC2517POLY**
3. Center Spring Bushing/Buffer, one required, 4.2 E-Type, MK I, MK II, 3.8S, 420/420G, auto or manual **C12265**
4. Support Spring, later 3.8 E-Type, 4.2 E-Type, MK I, MK II, 420, 420G, MK X, auto or manual **C45902-1**
5. Spring Retainer Plate, Later 3.8 E-Type, 4.2 Series I E-Type manual **C19119**
6. Spring Retainer Plate, 420G, MK X, 420, manual or automatic, 4.2 E-Type automatic, all Series II E-Type **C21932**
7. Pin, 4.2 E-Type manual or automatic **C21336**
8. Mount Plate, Later 3.8 E-Type, SWB 4.2 E-Type manual transmission (not 2+2 or automatic) **C21333**

Transmission Mounts, XJ-6 Series I, II & III:

XJ-6 Series I or II with BW35 or BW12 transmission:

1. Spring End Buffer, standard **JA-CBC2517**
2. Spring End Buffer, upgraded polyurethane **JA-CBC2517POLY**
9. Center Buffer, standard **JA-CAC3227**
10. Center Buffer, upgraded polyurethane **JA-CAC3227POLY**
11. Spring **C45902-1**

XJ-6 Series II and III with BW65/66 Transmission:

9. Center Buffer, standard **JA-CAC3227**
10. Center Buffer, upgraded polyurethane **JA-CAC3227POLY**
11. Spring **C45902-1**
12. Mount, two required **C32461**

Transmission Mount, V-12 E-Type:

13. Retainer, Standard Transmission **C34263**

6. Retainer, automatic transmission **C21932**

1. Spring Buffer, rubber, 2 required **JA-CBC2517**
2. Spring Buffer, upgraded polyurethane **JA-CBC2517POLY**
11. Spring, standard or automatic **C45902-1**
9. Spring Center Buffer, rubber **JA-CAC3227**
10. Spring Center Buffer, polyurethane **JA-CAC3227POLY**
14. Mount Plate, standard or automatic **C34805**
15. Location Pin, standard or automatic **C30158**
16. Washer, standard or automatic **C35666**
17. Spacer, standard or automatic **C30157**

Transmission Mounts, 5.3-Liter XJ-12 and XJ-S:

1. Spring End Buffer **JA-CBC2517**
2. As above, upgraded polyurethane **JA-CBC2517POLY**
9. Center Buffer **JA-CAC3227**
10. Center Buffer, upgraded polyurethane **JA-CAC3227POLY**
11. Spring, XJ-12 and pre-HE XJ-S **C45902-1**
18. Spring, XJ-S HE **JA-CAC2327-1**

Transmission Mounts, 6.0 Liter XJ-S:

19. Spring Seat, on each end of spring **JA-CCC3764**
20. Spring Damper (fitted from 188248) **JA-MHC7557AA**
21. Center "Spool" Buffer **JA-MMC7553AA**
22. Spring **JA-CCC5763**

Transmission Mounts, XJ-40 3.6 & 4.0 (1988-1994 XJ-6):

23. Foam Buffer, top of outer spring **JA-CBC1324**
24. Outer Spring **JA-CBC4744**
25. Rubber Seat, bottom of outer spring **JA-CBC1883**
26. Rubber Seat, top of inner spring **JA-CAC9343**
27. Inner Spring **JA-CBC4745**
28. Buffer, 6 required **JA-CAC9344**