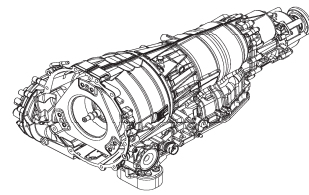
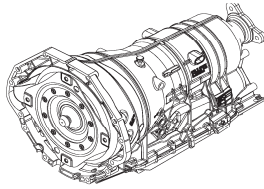
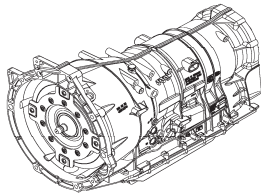


ZF 6HP26 / 6HP28



6HP26
6HP28

Automatic Transmission Spare Parts Catalog



Technical Information

Torque, Gear Ratio & Weight

Input Torque	1 Gear	2 Gear	3 Gear	4 Gear	5 Gear	6 Gear	Rev Gear	Drive	Weight (incl. oil)
326 ftlbs to 444 ftlbs (model specific)	4.17	2.34	1.52	1.14	0.87	0.69	3.40	RWD	~196 lbs.

Oil Capacity

9.4 liters (10 Quarts) + 0.5 liter (0.53 Quarts) for cooling system

6HP26 / 6HP28 Lubricants

Amount	ZF Part #	Oil Grade
1 Liter Bottle	S671 090 255	ZF LifeGuardFluid 6
20 Liter Canister	S671 090 253	ZF LifeGuardFluid 6
209 Liter Drum	S671 090 252	ZF LifeGuardFluid 6

Note: ZF recommends the use of LifeGuardFluid 6 for optimal performance.

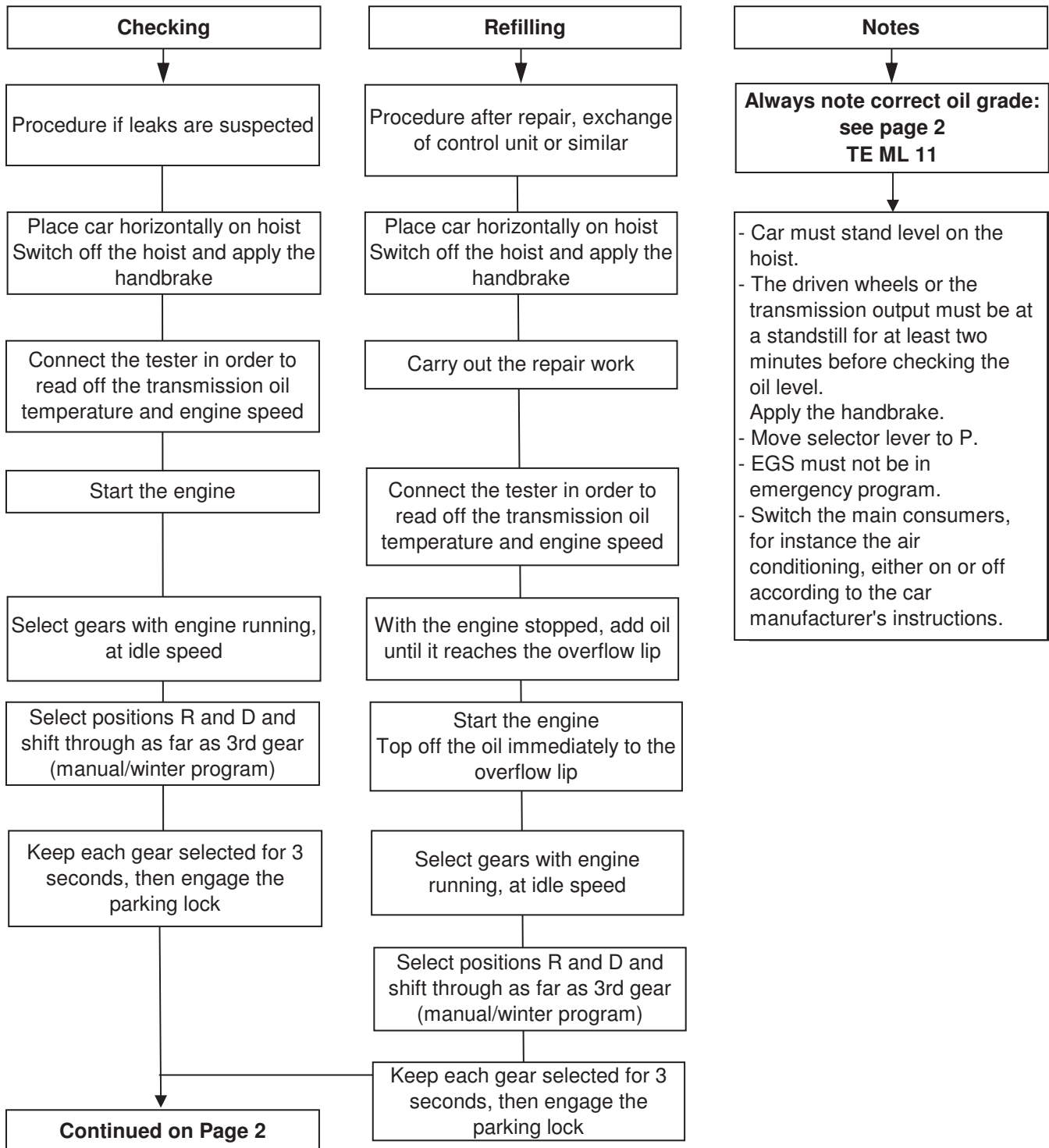
6HP26 / 6HP28 Technical Literature

Language	ZF Part #	Description
English	1068 766 702	6HP26 / 6HP28 REPAIR MANUAL (CD)
English	1068 766 701	6HP26 / 6HP28 FUNCTIONAL DESCRIPTION - BMW (CD)
English	1068 766 704	6HP26 / 6HP28 FUNCTIONAL DESCRIPTION - AUDI (CD)



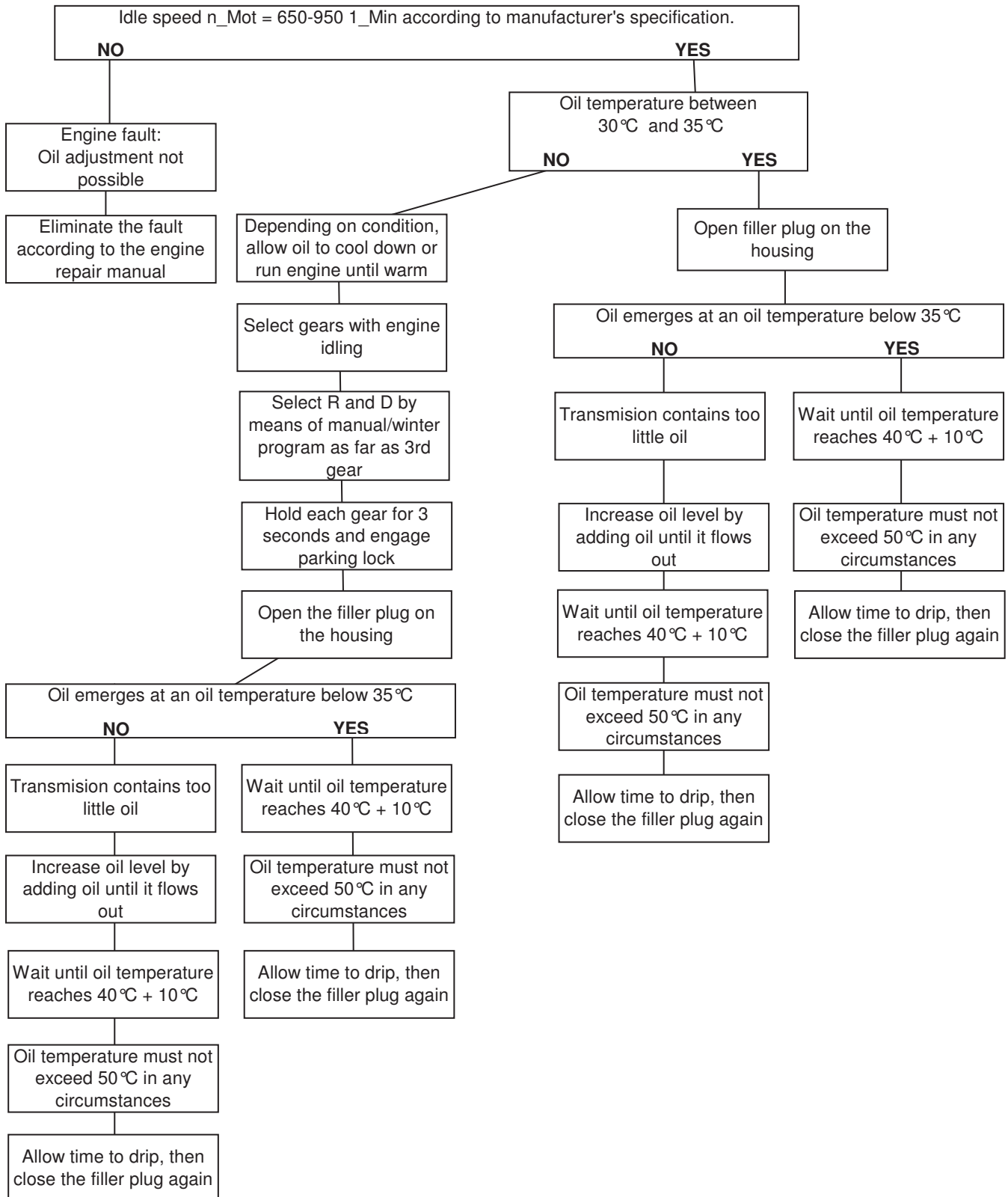
6HP26 / 6HP28 General Transmission Oil Filling Procedure

**Adding oil to 6HP26 / 6HP28 automatic transmission
- general - up to overflow at 40 °C**



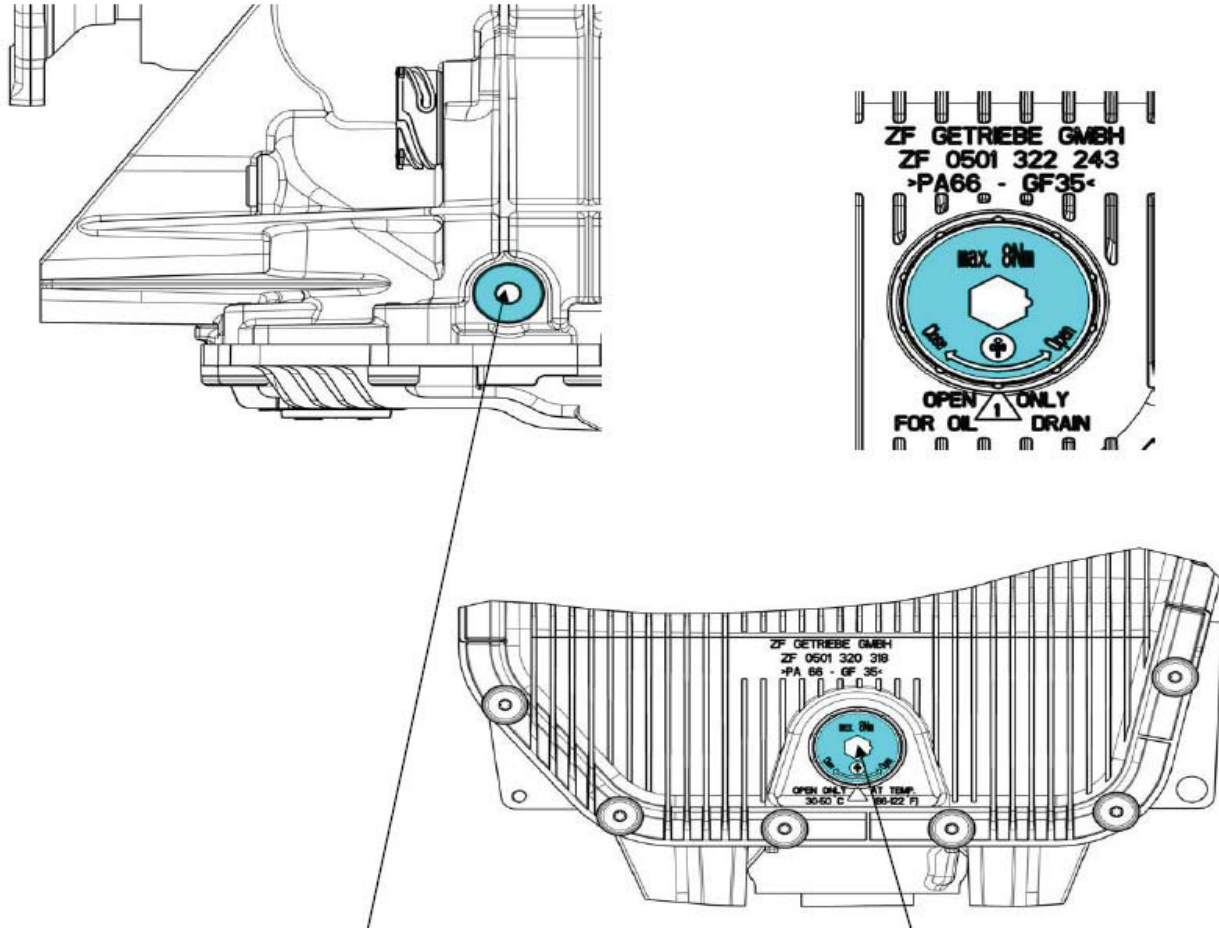


6HP26 / 6HP28 General Transmission Oil Filling Procedure (continued)



6HP26 / 6HP28 General Transmission Oil Filling Procedure (continued)

Oil service 6HP26 / 6HP28 Jaguar



Oil filler screw and oil level screw	M18X1.5
Internal hexagon	8 mm
Tightening torque	35 Nm ± 3.5 Nm

Oil drain plug	M24X1
Internal hexagon	10 mm
Tightening torque	8 Nm