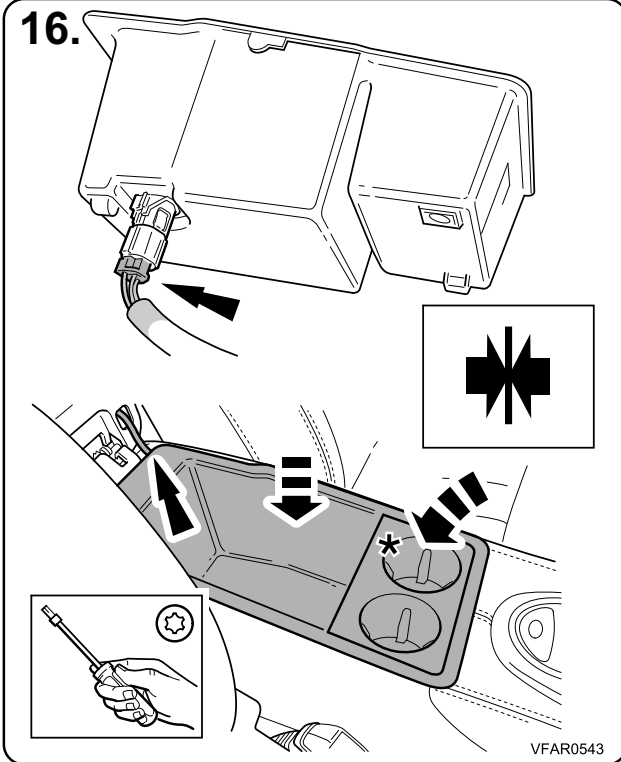




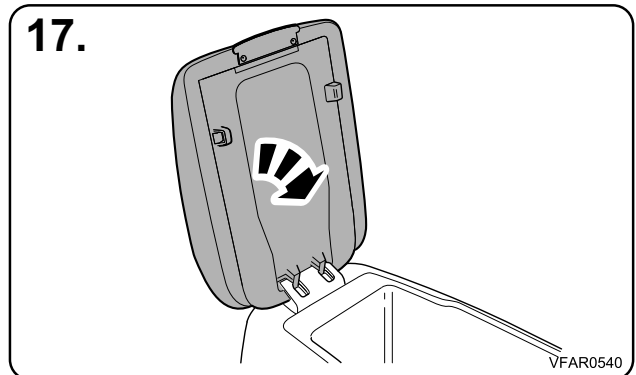
FITTING INSTRUCTIONS, INSTRUCTIONS DE MONTAGE, EINBAUANLEITUNG, ISTRUZIONI DI MONTAGGIO, INSTRUCCIONES DE MONTAJE, 取扱説明書

S-Type

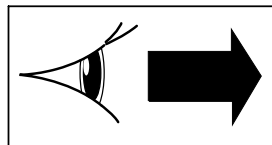
Bluetooth telephone system



* Notes:
16. If fitted.

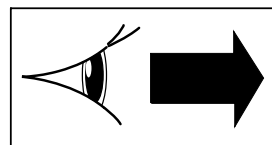


Notes
If the vehicle requires a microphone to be fitted.

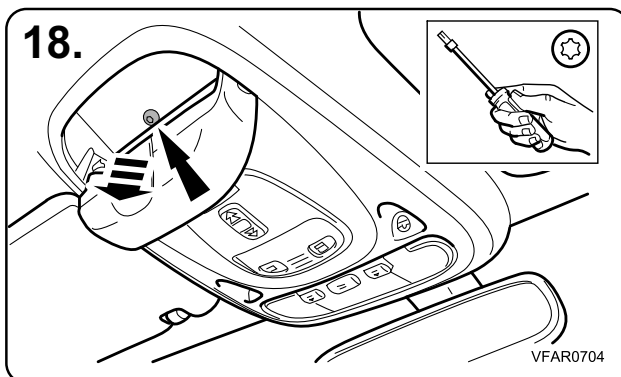


18.

Notes
If the vehicle is fitted with voice, or has had a telephone fitted previously.



31.





FITTING INSTRUCTIONS, INSTRUCTIONS DE MONTAGE,
EINBAUANLEITUNG, ISTRUZIONI DI MONTAGGIO,
INSTRUCCIONES DE MONTAJE, 取扱説明書

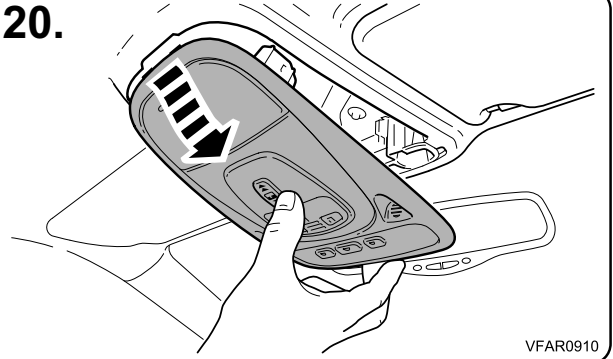
S-Type

Bluetooth telephone system

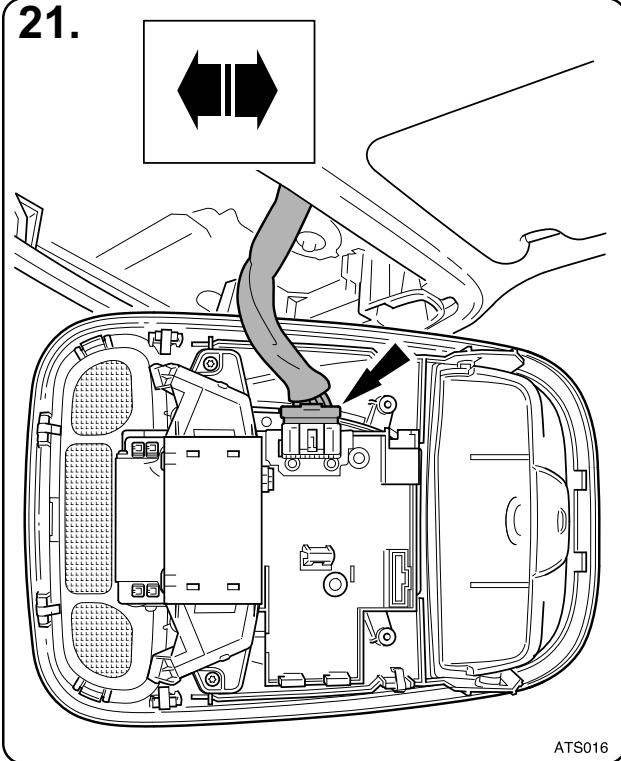
19.



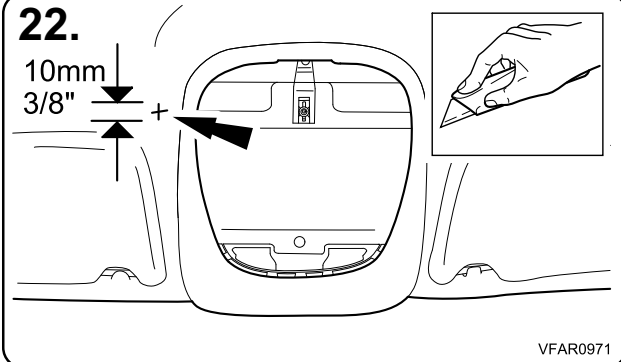
20.



21.



22.



Notes:

22. Cut trim alongside aperture to fit microphone.