

Quick Overview

SEAT BELTS/CHILD RESTRAINTS



A warning indicator on the instrument pack will illuminate to alert you that the driver's and/or front passenger's seat belt is unbuckled. Dependent upon specification this may be accompanied by an intermittent chime.

Child Seats

It is important to remember that your child's weight, rather than age, determines the type of seat that is required.

To determine the correct seat for your child, see 'CHILD AND INFANT SAFETY', page 66.

Rear centre seat belt interlock - Estate only

The centre rear seat belt is anchored to the back of the seat. If the seat backrest is not correctly latched the seat belt reel will not extend.

Automatic Locking Reels

Passenger seat belts have ALR fitted for use with child seats.

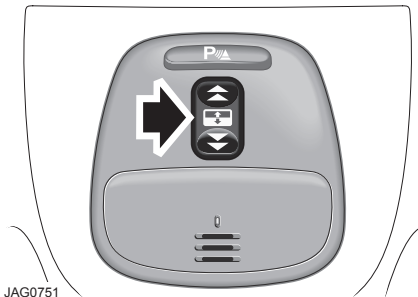
- To engage: extend the belt to maximum length to enable the locking mechanism.
- To disengage: unbuckle the belt and allow it to fully retract.

With ALR enabled, as the seat belt retracts it will automatically lock, preventing re-extension.

Ensure passengers do not fully extend the restraints and inadvertently engage this feature during normal use.

OVERHEAD CONSOLE

Sunroof



The sunroof is fitted with a facility that allows it to be fully opened or closed with a single operation of the indicated switch.

Closing remotely

- If the sunroof has been left open when leaving the vehicle, it can be closed by pressing and holding the lock button on the remote handset.