

How to UPDATE Jauguare Maps

Your Jaguar has three accounts

1. ATT chip (required for updating traffic, etc.)
2. Jaguar Incontrol Remote and Protect
<https://live.incontrol.jaguar.com/>
Used for REMOTE, Vehicle Locator, LIVE etc.
For information on set up see
<https://www.jaguarusa.com/incontrol/incontrol-user-guide/incontrol-protect.html>
3. Jaguar Route Planner (and Map updates)
<https://www.jaguar.here.com/>

To update the maps, you need to set up the Jaguar Route Planner Account (3) by visiting that web site. Once set up you will be able to update maps. The web site also has Links to download Android and iPhone software to be able to plan routes from your phone or from the website.

On the main page you will find a link to **[Go to Maps & Services](#)**

PLAN - SYNC - DRIVE - ARRIVE

Where do you want to go?

LAST DESTINATIONS SYNCED [See all your destinations](#)

5004 Carroll Lake Rd
Carroll Lake Rd 5004, 4B3B2 Commerce [CANCEL ROUTE](#)

DOOR-TO-DOOR, AND MORE

[Get InControl Route Planner App](#)

Plan your journey, get door-to-door guidance, see where your car is parked and much more.

[Download iPhone app](#)
[Download Android app](#)

[See more](#)

MAPS & SERVICES

Get the latest Maps & Services for your InControl Touch Pro Infotainment system. Four times per year, maps are updated with the most current information available to give you more accurate routing and more enjoyable navigation.

[Go to Maps & Services](#)

Click on the link

The Next page has several links to download various region maps.
Select **North America Map + Services Subscription**

INCONTROL TOUCH PRO MAPS & SERVICES

Choose a product to download

Map Updates are released quarterly. If you would like to be notified of future updates, please set your contact preferences in My Account > [Personal Information](#)
The Maps & Services shown are compatible with the currently selected vehicle. Before proceeding, check this selection is correct. If required, use Add Vehicle to link a new vehicle with this account.
Maps can be purchased on any device but can only be downloaded using a desktop computer.
Please note that specific terms of purchase apply to download products.

CONNECTED FEATURES

To enjoy the benefits of these services, please ensure you have a suitable data plan and Micro-SIM fitted in the vehicle.





CONNECTED SERVICES

Connected services are included with a map subscription.



MAPS

	North America Map + Services Subscription - 1 Year Version Number: 08.030.0096.0157 Entitles the subscriber to monthly map updates for the duration of the subscription. This product includes a connected service subscription and will extend any current active subscription. Update includes most recent changes to the road network and static speed cameras. *United States of America only. Countries covered v	Subscription Expires: 2021-09-07 GET LATEST VERSION
	North America Map + Services Subscription - 3 Years Version Number: 08.030.0096.0157 Entitles the subscriber to monthly map updates for the duration of the subscription. This product includes a connected service subscription and will extend any current active subscription. Update includes most recent changes to the road network and static speed cameras. *United States of America only. Countries covered v	Subscription Expires: 2021-09-07 GET LATEST VERSION

The first time you download, you will download an installation program for your computer.

MapDownloader_installer_win_offline_1_2_1.exe

You must then run this program to install it to your computer. Leave the web page open while you do this as you will come back to this page after installing the program. You can pick a different location to install this to, but the default is C:\program files (x86)\ Map Downloader.

Once installed, you then click the same button on the web page that you used to download the installer file. It will find the program you installed and run it. It will ask you where to download the new Maps. Pick a USB that is at least 32 GB and is formatted as FAT 32. The download can take a long time depending on your internet speed and USB type. Might be 40 minutes to a few hours.

Note: Maps purchased and/or downloaded will only work in the selected vehicle and are exclusive to the Vehicle Identification Number (VIN) entered.

Follow the attached instruction



INSTALLING PRODUCTS

Installation Guide

Note: The graphics shown in the guide are for illustrative purposes only and may vary depending on the vehicle

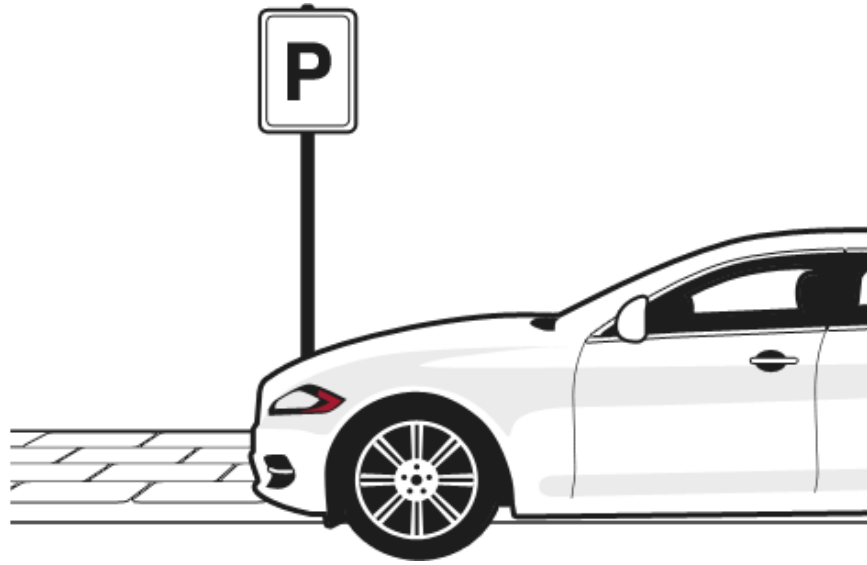
- 1.1 Start the engine of your vehicle and ensure the navigation system is switched on.

Note: The engine must be running during the entire map update process to ensure that the vehicle's power-saving measures do not interrupt the update.

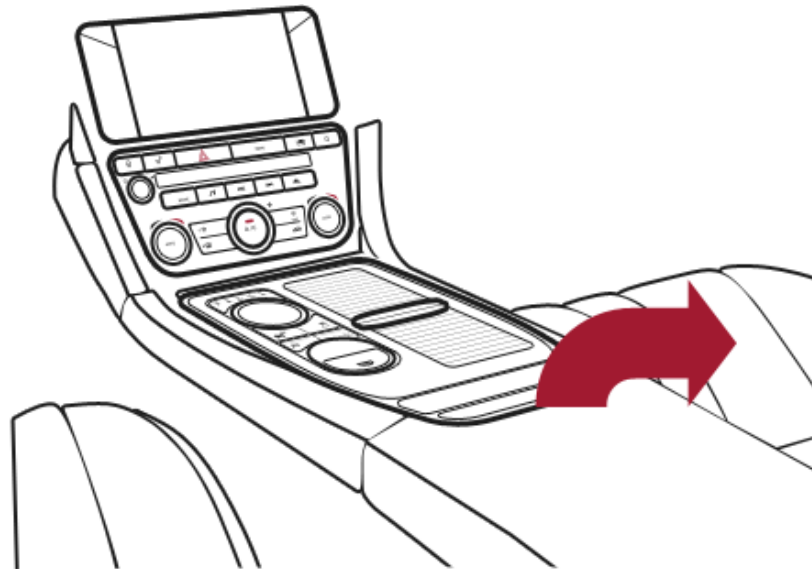


- 1.2 Remain stationary.

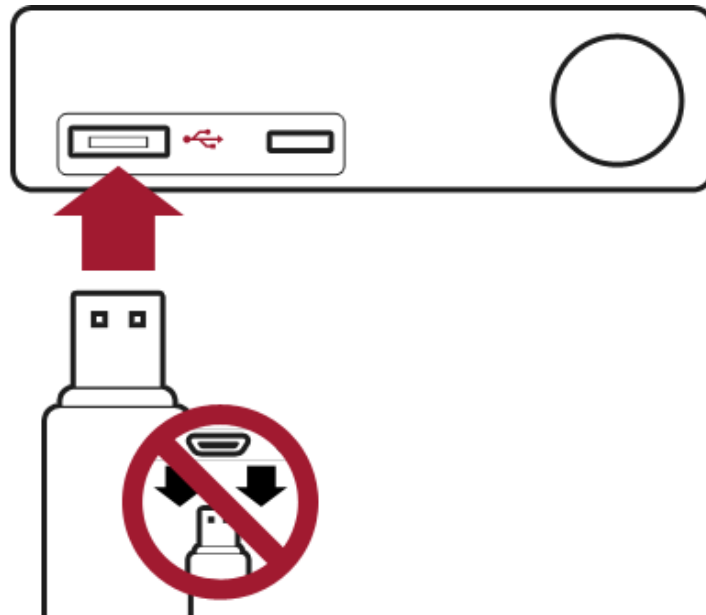
Note: You may start driving after the update process has begun, but the navigation system cannot be used for routing until the map update is complete.



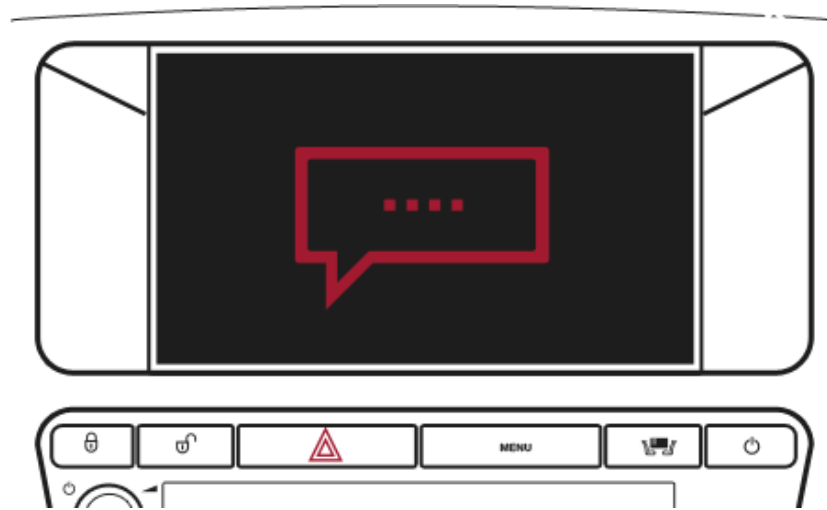
-
- 2.1 Locate the USB slot on the vehicle, this is typically located in the centre stowage area between the front seats.



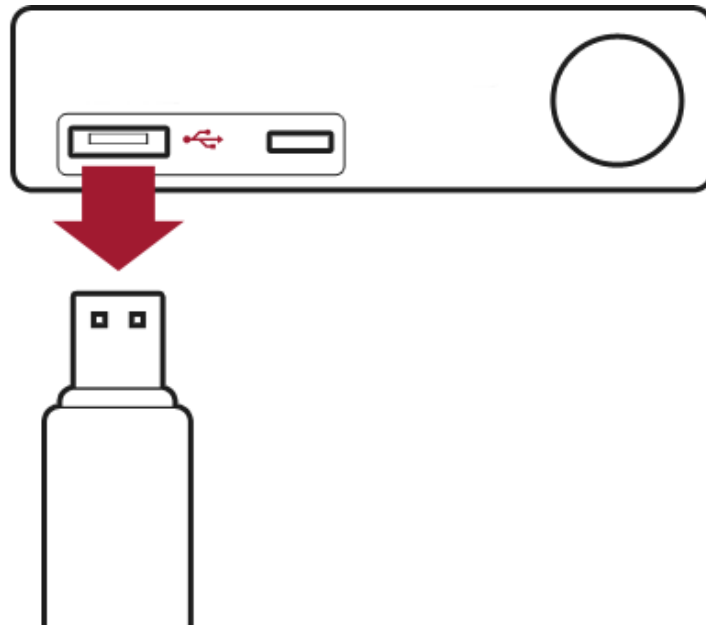
- 2.2 Insert the USB stick containing the downloaded map data into the slot.



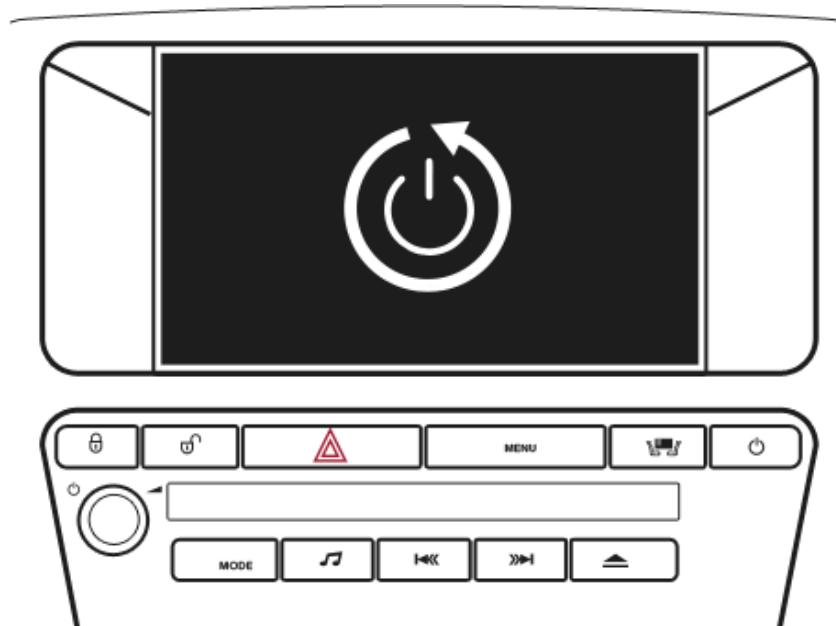
2.3 Select Navigation Feature. Follow the onscreen instructions to complete the map installation.



3.1 Once the update is complete, remove the USB stick and click Continue.



3.2 The navigation system will automatically shut down and restart.



3.3 Click Continue to return to the home screen. Your new map is now available to use.



DOWNLOAD AS PDF

Payments accepted:



The Services on this site (i.e., your purchase of a product and related fulfillment services) are performed by HERE North America, LLC, 425 West Randolph Street, Chicago, Illinois, 60606, USA. Use of the services is subject to HERE Service Terms and Privacy Policy.

[PRIVACY POLICY](#)

[COOKIE POLICY](#)

[SERVICE TERMS](#)

[ABOUT](#)

[HELP & SUPPORT](#)

