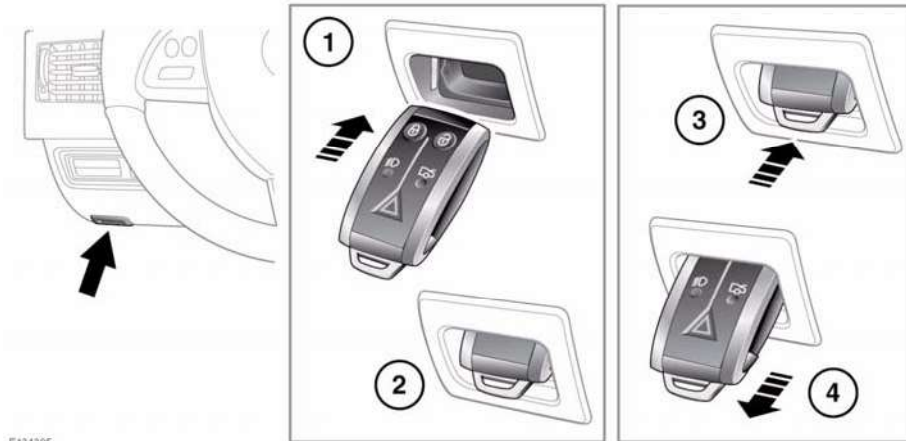


# Starting the engine

## IF THE ENGINE FAILS TO START

If the brake pedal has been pumped prior to an attempt to start the engine, it may require greater pressure on the pedal in order for the engine to start.

If the Jaguar Smart Key is placed in the door pocket, it may be outside the range of the sensors when the door is open.



E134395

If the Smart Key fails to operate, **Smart Key Not Found- Refer to Handbook** is displayed in the message centre. To start the engine it will be necessary to dock the Smart Key, as follows:

1. Insert the Smart Key fully into the starter control unit, as shown.

**Note:** When docking the Smart Key, it is recommended that the emergency key blade is left in place. The end of the blade can then be used as a handle, to pull the Smart Key from the control unit when undocking.

2. Ensure the Smart Key is securely docked, then press and release the START/STOP button with the brake pedal applied to start the engine.

3. To undock the smart key, ensure that the gear selector is in the **P** position and the ignition is switched off, then press and release the Smart Key. The Smart Key will eject from the starter control unit.

**!** Ensure that the ignition is switched off before undocking the Smart Key, otherwise damage to the Smart Key may occur.

4. Remove the Smart Key.

If the engine still fails to start, seek qualified assistance.