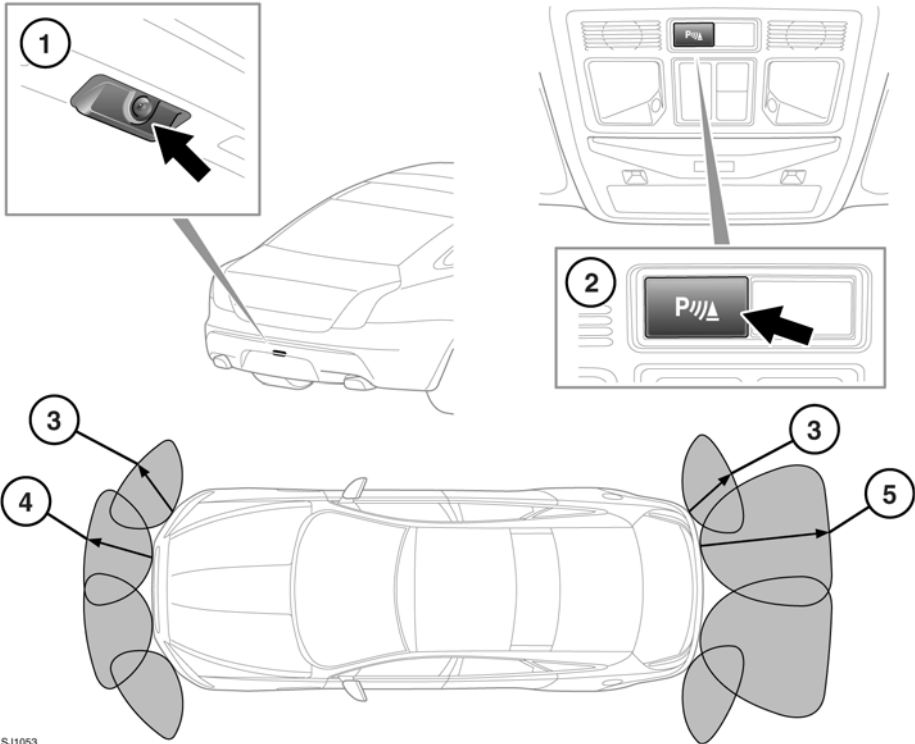


Parking aids

OPERATION



SJ1053

1. Rear view camera. See **84, REAR VIEW CAMERA**.
2. Parking aid switch. Press to turn the parking aid on and off.
3. Approximately 600 mm (24 inches).
4. Approximately 800 mm (31 inches).
5. Approximately 1800mm (71 inches).



WARNING: The parking aid system is not a substitute for driving safely with due care and attention. Drivers should not assume that this feature will correct errors of judgement while driving.



WARNING: The parking aid system may not function under all speeds, weather and road conditions.



WARNING: Parking aids may not detect moving objects, such as children and animals until they are dangerously close. Always exercise extreme caution when maneuvering and always use the mirrors.



WARNING: It remains the driver's responsibility to detect obstacles and estimate the vehicle's distance from them. Some overhanging objects, barriers, small children, animals, thin obstructions or painted surfaces may not be detected by the system.



CAUTION: The parking aid sensors may not detect some obstructions (e.g. narrow posts, small objects close to the ground and some objects with dark, non-reflective surfaces). Parking aids are for guidance only and are not intended to replace the driver's visual checks for obstructions or objects when maneuvering.



CAUTION: Systems using the same frequency band as the front parking sensors may cause irregular tones to be emitted.

Note: The sensors are active when the gear selector is in neutral and in drive after moving from reverse. Therefore an audible warning tone will sound if an obstacle is detected.

USING THE PARKING AID



CAUTION: The parking aid system switches off when vehicle speed exceeds 15 km/h (9 mph) in drive (**D**) and will need to be reselected again if needed.

When in reverse, neutral or drive, press the switch (**2**) to turn the parking aid on (switch indicator illuminates) and off.

A pop-up appears on the touch screen, showing a plan view of the vehicle and the immediate surrounding area. Touch the pop-up to cancel this view.

When objects are detected the Park aid will emit a warning tone which increases in frequency as the vehicle gets closer to the object and then becomes constant when the obstacle is within 300 mm (12 inches).

If an obstacle is detected at the front or rear of the vehicle, a warning tone will be heard from the front or rear speakers respectively. The speakers used will be nearest to the obstacle i.e. rear speakers if the obstacle is behind the vehicle.

Objects are detected within the approximate operating ranges as shown in the illustration (items **3**, **4** and **5**).

Note: The front parking aid provides an audible proximity warning when driving forwards or reversing.

Note: If a rear-view camera is fitted, when reverse gear (**R**) is selected, the camera display is selected automatically. To view the parking aid display, touch the screen.

Note: The outer sensors will switch off if the distance to an object increases or remains constant for 3 seconds. The sensors will reactivate automatically if a new object is detected within the operating range, or if the distance to the original object reduces.

PARKING AID VOLUME

To set the volume of the parking aid warning tones:

- Select **Setup** from the touch screen Home menu, then select **System**.
- Select **Volume presets**, then use the **+** or **-** soft keys alongside Parking aid to adjust volume for both front and rear warning tones.


Parking aids


REAR FITTED ACCESSORIES

Particular care must be taken when reversing with rear fitted accessories, as the rear parking aid will only indicate the distance from the bumper to the obstacle.

CLEANING THE SENSORS

For reliable operation, the sensors in the front and rear bumpers should be kept free from ice, frost and grime.

 CAUTION: Do not clean the sensors with abrasive or sharp objects or materials.

 CAUTION: When using a high pressure spray, only spray the sensors briefly, from a distance greater than 200 mm (8 inches).

SYSTEM FAULT

If the system has a fault when engaging reverse gear or turning on the ignition, a single three second tone will be heard and the warning indicator in the parking aid switch will flash for three seconds before switching off. The system is automatically disabled.

Note: *The parking aid may sound spurious tones if it detects a frequency tone using the same band as the sensors (e.g. air brakes).*

REAR VIEW CAMERA



WARNING: It remains the driver's responsibility to detect obstacles and estimate the vehicle's distance from them when reversing.



CAUTION: Some overhanging objects or barriers which could cause damage to the vehicle may not be detected by the camera.

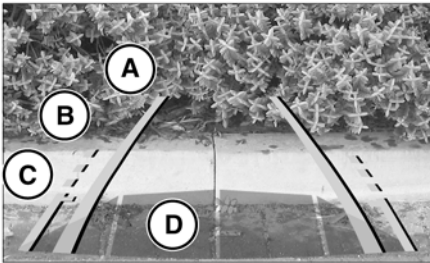
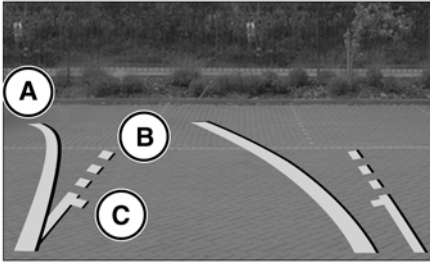
When reverse (**R**) is selected, the system uses a camera to provide a wide-angle color rear view image on the touch screen.

The camera display has priority over the parking aid display. To view the parking aid display instead, or to cancel camera display at any time, touch the display.

The display also incorporates graphic overlays indicating vehicle direction, width and proximity to surrounding objects.

Note: *The camera image will not be displayed:*

- *If drive (**D**) is selected and the vehicle speed is greater than 16 km/h (10 mph).*
- *If drive (**D**) is selected for longer than 2 seconds.*



SJ1122

- A.** Solid line: The projected wheel trajectory.
- B.** Dotted line: The safe working width of the vehicle (including exterior mirrors).
- C.** Trunk access guideline: Do not reverse beyond this point if trunk access is required.
- D.** Parking sensor activation: A colored area appears to indicate which rear sensor(s) has been activated.