



6.1

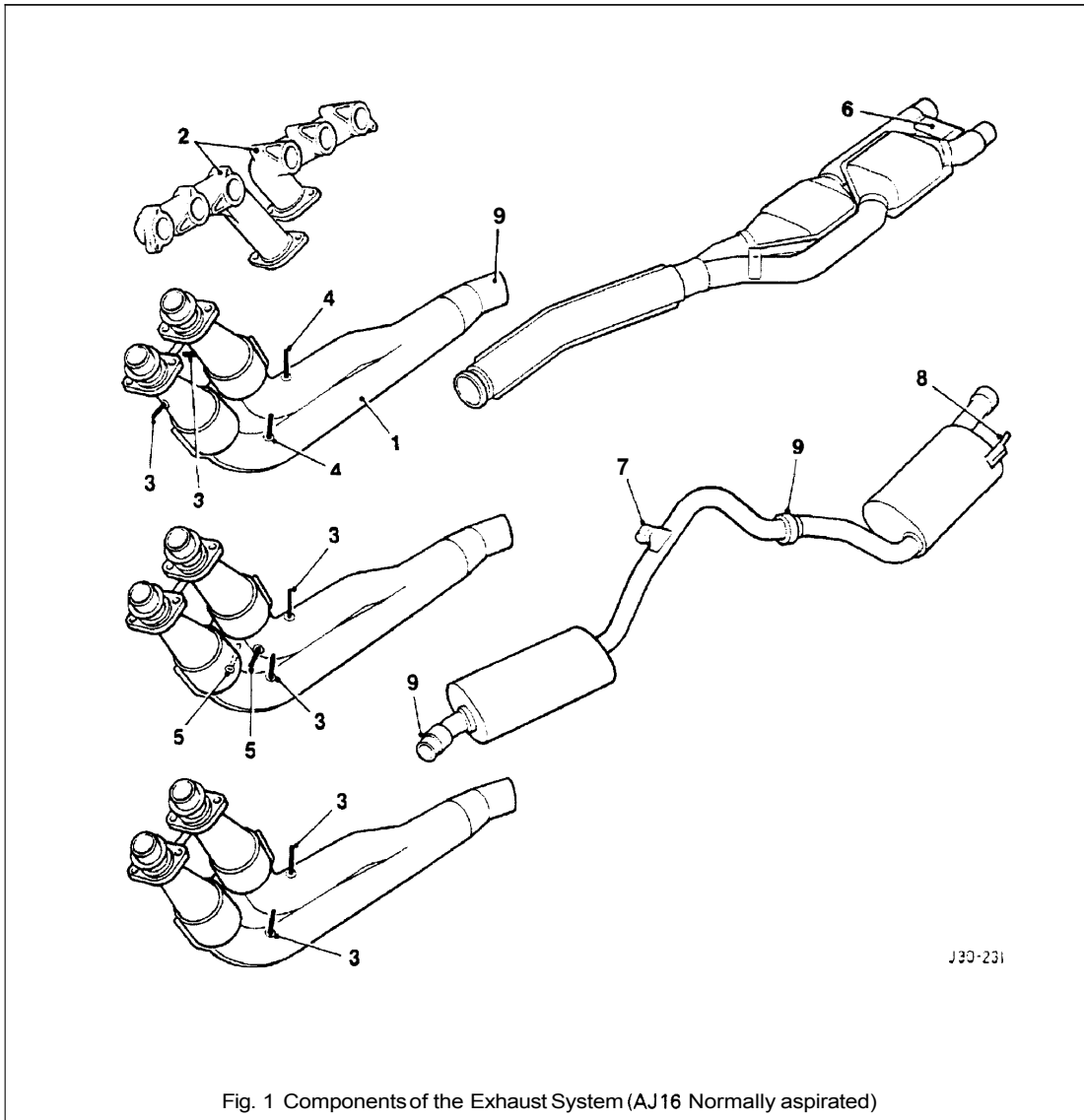


Fig. 1 Components of the Exhaust System (AJ16 Normally aspirated)

Heated oxygen sensors are fitted to the downpipe assembly (1 Fig.1) which is connected to the manifold (2 Fig.1). There are two sensors for the ROW and Japan (3 Fig.1) and two additional sensors (4 Fig.1) for NAS markets.

The sensors are located upstream and downstream of catalytic converters.

Apart from two heated oxygen sensors, the exhaust system for vehicles destined for the Japanese market are also fitted with two exhaust gas temperature sensors (5 Fig.1).

The exhaust system is held in a predetermined position by a fixing arrangement to the manifold by exhaust centre mountings (6 Fig.1), by rear axis mountings (7 Fig.1), and tail pipe mountings (8 Fig.1).

Clamps (9 Fig.1) used on each slip joint are welded to the pipes and tightened to a higher torque setting than non-welded clamps.

The exhaust system must be free of leaks, binding, grounding and excessive vibrations. These conditions are usually caused by loose, broken, or misaligned clamps, shields, brackets, or pipes. Should any of these conditions exist, check the exhaust system components and alignment. Adjust and renew if necessary. Do not attempt to service brackets, clamps and insulators.