

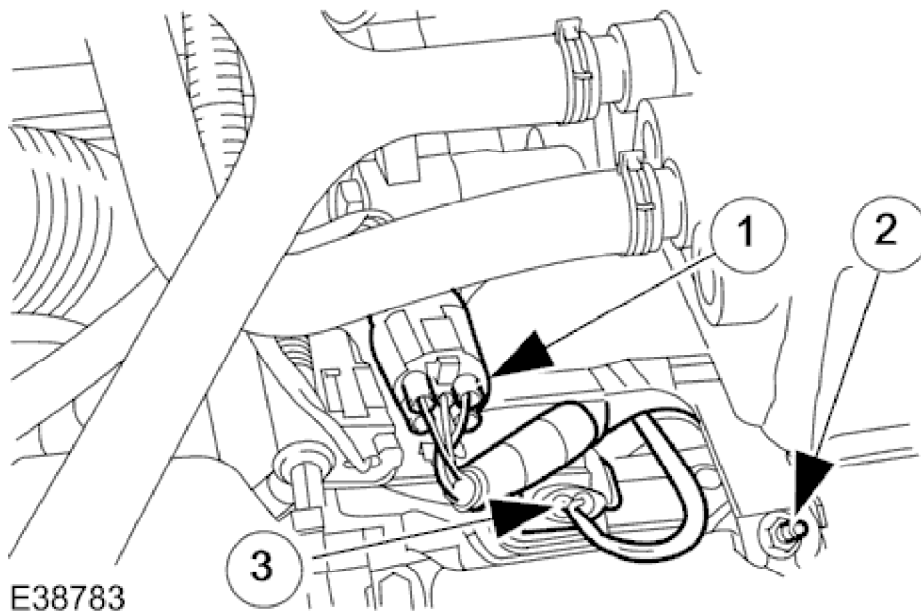
Fuel Injector Vehicles With: Supercharger 18.10.01

Removal

1. Disconnect battery ground cable (IMPORTANT, see SRO <<86.15.19>> for further information).

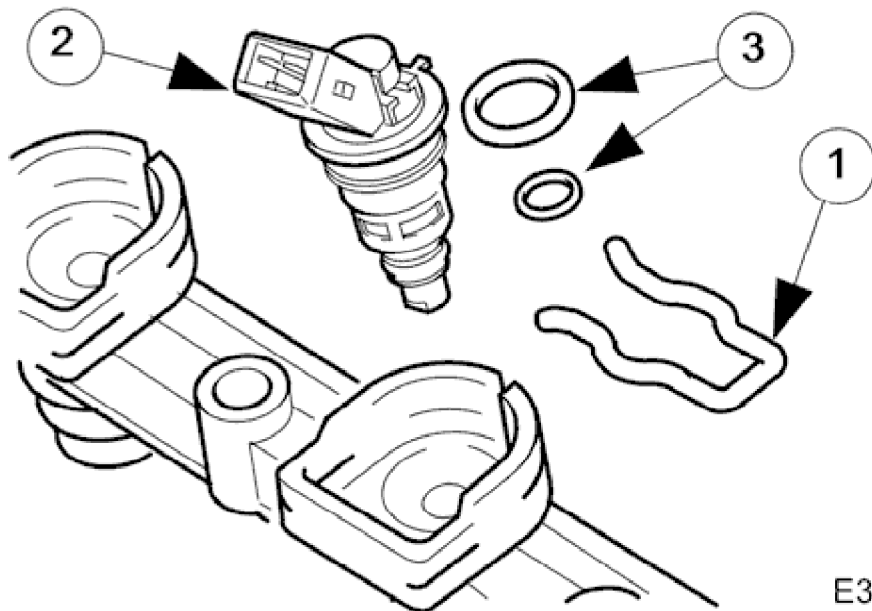
2.  **WARNING:**
BEFORE PROCEEDING, IT IS ESSENTIAL THAT THE WARNING NOTES GIVEN IN SECTION <<100-00>> (UNDER THE HEADING 'SAFETY PRECAUTIONS') ARE READ AND UNDERSTOOD.

Depressurize fuel system; refer to <<19.50.02>>.



3. Disconnect injector connector.
 1. Disconnect and reposition bank 1 or 2 fuel injector harness connector to allow access to injector.
 2. Loosen but do not remove nut securing injector harness support bracket to camshaft cover. Reposition injector harness to allow access to injector.
 3. Detach injector connector.

1998 XJ RANGE - Fuel Charging and Controls - 303-04



4. Remove fuel injector.

1. Prise out injector retaining clip, ensuring that it is not ejected and lost. Note orientation of clip.
2. Using a suitable implement, carefully lever injector from fuel rail.
3. Discard injector O-rings.

5. Clean all mating faces.

Installation

1. Install fuel injector.

1. Install new O-rings, lubricated with petroleum jelly, to fuel injector.
2. Install fuel injector into fuel rail. Press firmly until it is felt to click into place.
3. Hold injector firmly down and install injector securing clip in correct orientation.

2. Re-connect injector and harness connectors.

3. Tighten harness nut to 4-5Nm.

4. Reconnect battery ground cable (IMPORTANT, see SRO <<86.15.15>> for further information).