



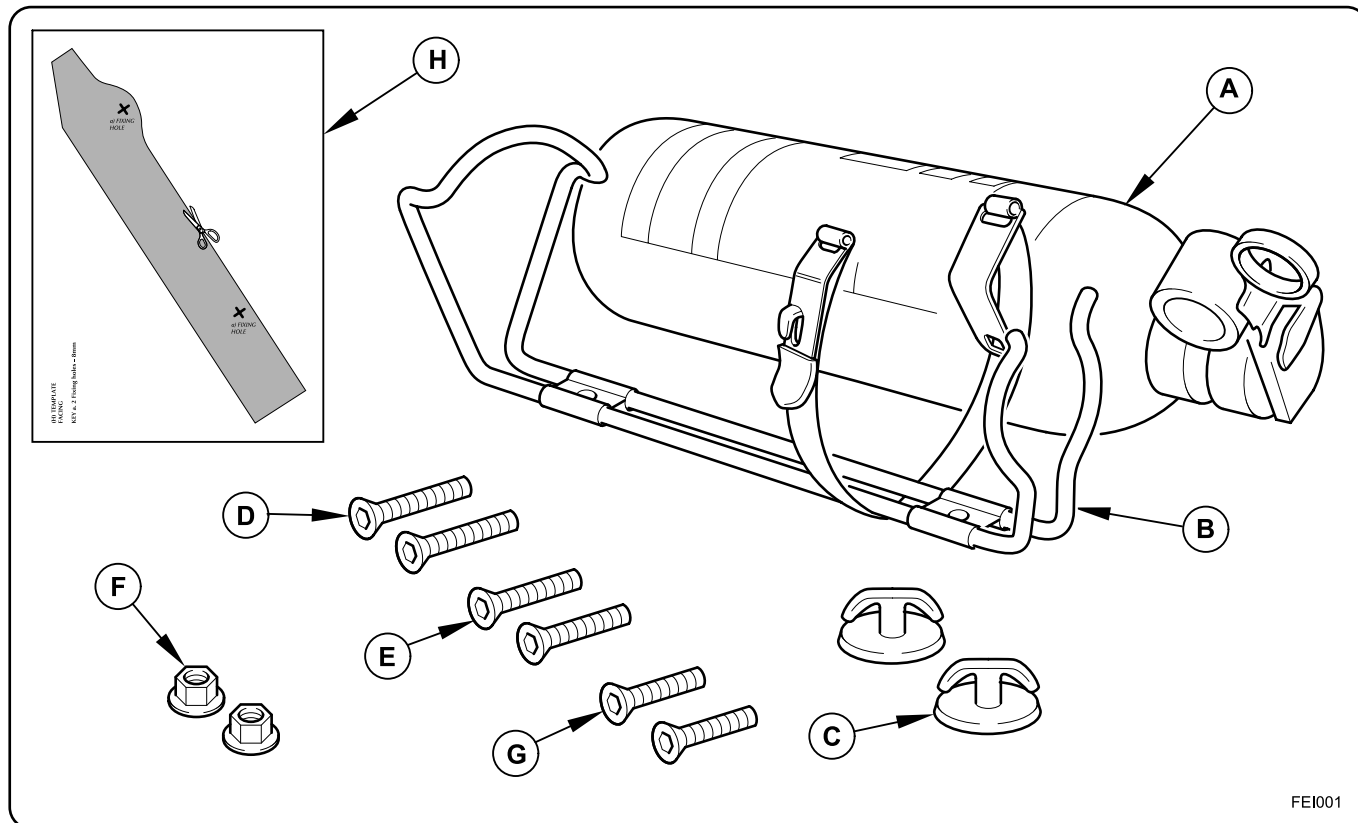
FITTING INSTRUCTIONS, INSTRUCTIONS DE MONTAGE,
EINBAUANLEITUNG, ISTRUZIONI DI MONTAGGIO,
INSTRUCCIONES DE MONTAJE, 取扱説明書

**XK Series, S-TYPE, V8/XJ Series, X-TYPE &
The XJ, La XJ, Der XJ, XJ**

**Fire Extinguisher,
Extincteur,
Feuerlöscher,
Extintor,
Estintore,
消火器**

All Models

**Fire Extinguisher, Extincteur, Feuerlöscher,
Extintor, Estintore, 消火器**



Parts required

(Ordered separately)

- A. Fire extinguisher
- B. Mounting bracket & securing strap
- C. Securing T-Anchors
- D. Bolts x 2 - 30mm long
(XK Series, XJ Series & X-TYPE)
- E. Bolts x 2 - 25mm long (S-TYPE & The XJ)
- F. Nut x 2 (X-TYPE only)
- G. Bolts x 2 - 20mm long
(XJ Series full board, S-TYPE, X-TYPE & The XJ)
- H. Template (S-TYPE only)

**Pièces de rechange nécessaires
(Commandé es séparément)**

- A. Extincteur
- B. Support de fixation et sangle de maintien
- C. Ancrages de fixation en T
- D. 2 boulons de 30mm de longueur
(Série XK, série XJ et X-TYPE)
- E. 2 boulons de 25mm de longueur
(S-TYPE et La XJ)
- F. 2 écrous (X-TYPE uniquement)
- G. 2 boulons de 20mm de longueur
(Série XJ plancher plein, S-TYPE, X-TYPE et La XJ)
- H. Gabarit (S-TYPE uniquement)

Notwendige Bauteile

(Separat zu bestellen)

- A. Feuerlöscher
- B. Halter und Halteband
- C. T-Stücke
- D. Schrauben, 2, 30mm
(XK-Serie, XJ-Serie und X-TYPE)
- E. Schrauben, 2, 25mm (S-TYPE und der XJ)
- F. Muttern, 2 (nur X-TYPE)
- G. Schrauben, 2, 20mm
(XJ-Serie massive Platte, S-TYPE, X-TYPE und der XJ)
- H. Schablone (nur S-TYPE)

**Ricambi necessari
(Da Ordinare separatamente)**

- A. Estintore
- B. Staffa di montaggio e fascetta di fissaggio
- C. Ancoraggi di fissaggio a T
- D. 2 viti - lunghezza 30mm
(Serie XK, Serie XJ e X-TYPE)
- E. 2 viti - lunghezza 25mm (S-TYPE e La XJ)
- F. 2 dadi (solo X-TYPE)
- G. 2 viti - lunghezza 20 mm (Serie XJ con superficie inferiore pannello liscia, S-TYPE, X-TYPE e La XJ)
- H. Sagoma (solo S-TYPE)

Piezas necesarias

(Pedido a realizar por separado)

- A. Extintor
- B. Soporte de montaje y correa de sujeción
- C. Anclajes de seguridad en T
- D. 2 tornillos (30mm de largo)
(serie XK, serie XJ y X-TYPE)
- E. 2 tornillos (25mm de largo) (S-TYPE y La XJ)
- F. 2 tuercas (X-TYPE solamente)
- G. 2 tornillos (20mm de largo)
completa en serie XJ, S-TYPE, X-TYPE y La XJ)
- H. Plantilla (S-TYPE solamente)

必要なパーツ

別途発注します

- A. 消火器
- B. マウンティング ブラケット及び固定ストラップ
- C. 固定 T-アンカー
- D. ボルト x 2 - 30 mm 長
(XK Series, XJ Series 及び X-TYPE)
- E. ボルト x 2 - 25 mm 長 (S-TYPE)
- F. ナット x 2 (X-TYPE のみ)
- G. ボルト x 2 - 20 mm 長
(XJ Series フル ボード)、S-TYPE X-TYPE 及び XJ
- H. テンプレート (S-TYPE のみ)

MY 1998 →

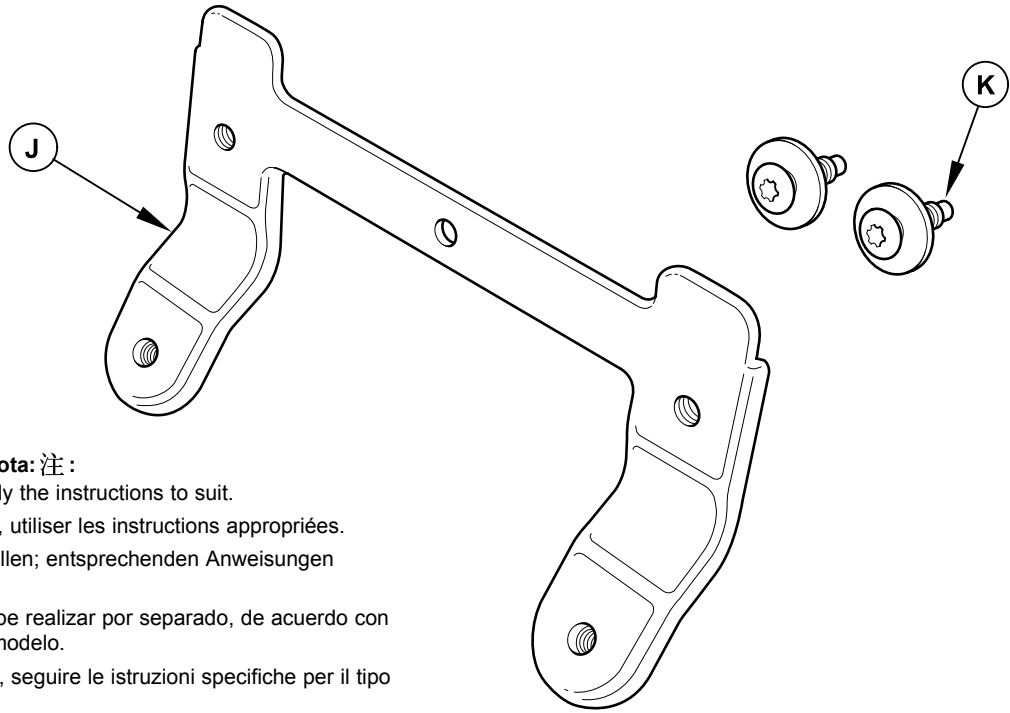
Part No. C2S 35865



FITTING INSTRUCTIONS, INSTRUCTIONS DE MONTAGE,
EINBAUANLEITUNG, ISTRUZIONI DI MONTAGGIO,
INSTRUCCIONES DE MONTAJE, 取扱説明書

All Models

Fire Extinguisher, Extincteur, Feuerlöscher,
Extintor, Estintore, 消火器



Notes: Hinweise: Note: Nota: 注 :

Kit ordered separately, apply the instructions to suit.

Kit commandé séparément, utiliser les instructions appropriées.

Der Kit ist separat zu bestellen; entsprechenden Anweisungen folgen.

El pedido de este kit se debe realizar por separado, de acuerdo con las instrucciones de cada modelo.

Kit ordinato separatamente, seguire le istruzioni specifiche per il tipo di veicolo.

キットは個別にオーダーされます。インストラクションにより読んで下さい。

FES00K

Parts required

(Ordered separately)

- J. Front seat mounting bracket
- K. Bolts

Notwendige Bauteile

(Separat zu bestellen)

- J. Halter – Vordersitz
- K. Schrauben

Piezas necesarias

(Pedido a realizar por separado)

- J. Soporte del asiento delantero
- K. Tornillos

Pièces de rechange nécessaires
(Commandé es séparément)

- J. Support de montage sur siège avant
- K. Vis

Ricambi necessari
(Da Ordinare separatamente)

- J. Staffa di montaggio sedile anteriore
- K. Viti

必要なパーツ
別途発注します

- J. フロントシートマウンティング
ブラケット
- K. ボルト

Notes: Hinweise: Note: Nota: 注 :

If the seat mounted fire extinguisher has been ordered, follow operations 43-50.

Si l'extincteur monté sur siège a été commandé, suivez les opérations 43-50.

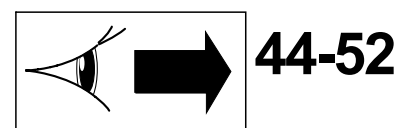
Wurde der am Sitz befestigte Feuerlöscher bestellt, führen Sie bitte Arbeitsschritte 43-50 durch.

Si el vehículo lleva el extintor montado en el asiento, siga las operaciones 43-50.

Se fosse in dotazione l'estintore montato adiacente al sedile, attenersi alle operazioni 43-50.

消火器付シートがオーダーされた場合、
手順 43-50 に従ってください。

**S-TYPE &
The XJ, La XJ,
Der XJ, XJ**



44-52

MY 1998 ➔

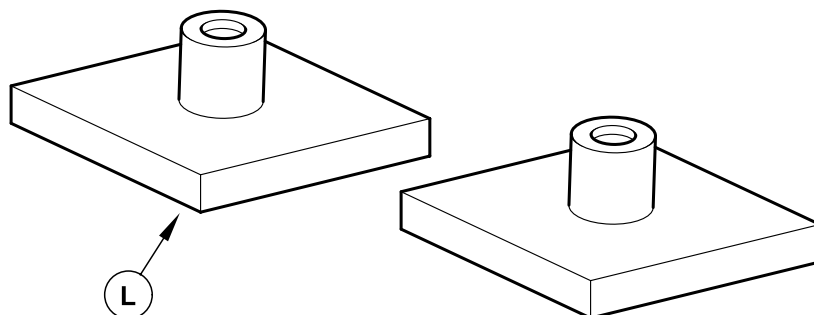
Part No. C2S 35865



**FITTING INSTRUCTIONS, INSTRUCTIONS DE MONTAGE,
EINBAUANLEITUNG, ISTRUZIONI DI MONTAGGIO,
INSTRUCCIONES DE MONTAJE, 取扱説明書**

**X400 ESTATE /
WAGON**

**Fire Extinguisher, Extincteur, Feuerlöscher,
Extintor, Estintore, 消火器**



Notes: Hinweise: Note: Nota: 注:

Kit ordered separately, apply the instructions to suit.

Kit commandé séparément, utiliser les instructions appropriées.

Der Kit ist separat zu bestellen; entsprechenden Anweisungen folgen.

El pedido de este kit se debe realizar por separado, de acuerdo con las instrucciones de cada modelo.

Kit ordinato separatamente, seguire le istruzioni specifiche per il tipo di veicolo.

キットは個別にオーダーされます。インストラクションにより読んで下さい。

VU00438

Content of kit

L. Bracket

Lieferumfang des Service-Kits

L. Halter

Contenido del kit

L. Soporte

Contenu du kit

L. Support

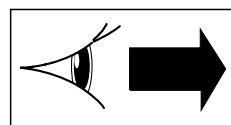
Contenuto del kit

L. Staffa

キット内容

L. ブラケット

**X-TYPE
ESTATE / WAGON**



53-62

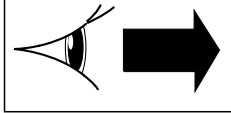
MY 2004.5


Part No. C2S 35865





All Models


**Fire Extinguisher, Extincteur, Feuerlöscher,
 Extintor, Estintore, 消火器**

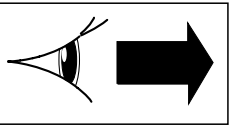
V8/XJ Series  **1-7**

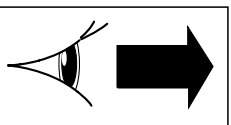
XK Series  **8-15**

S-TYPE  **16-24**

X-TYPE  **25-34**

**The XJ
 La XJ,
 Der XJ,
 XJ**  **35-43**

**S-TYPE
 The XJ
 La XJ,
 Der XJ,
 XJ**  **44-52**

**X-TYPE
 ESTATE /
 WAGON**  **53-62**

MY 1998 

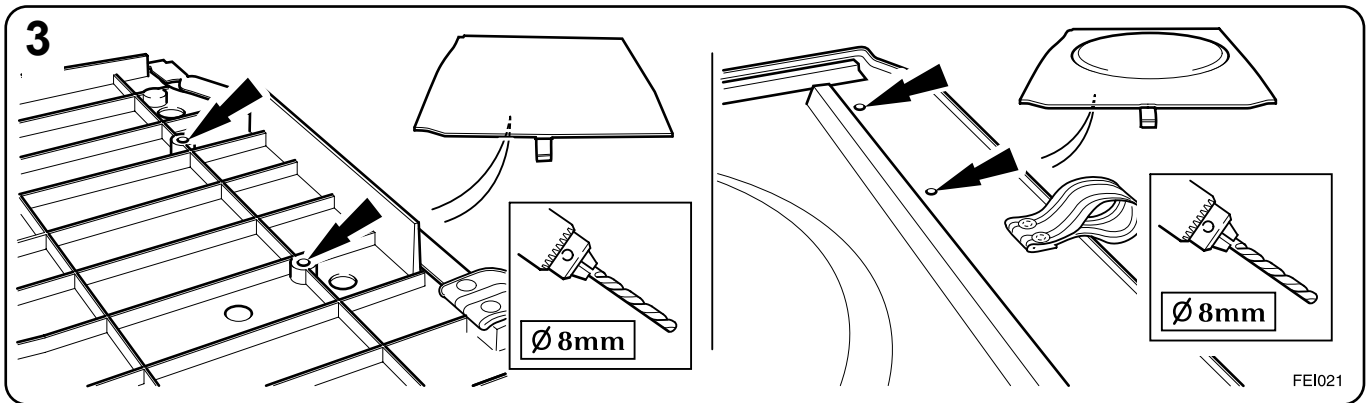
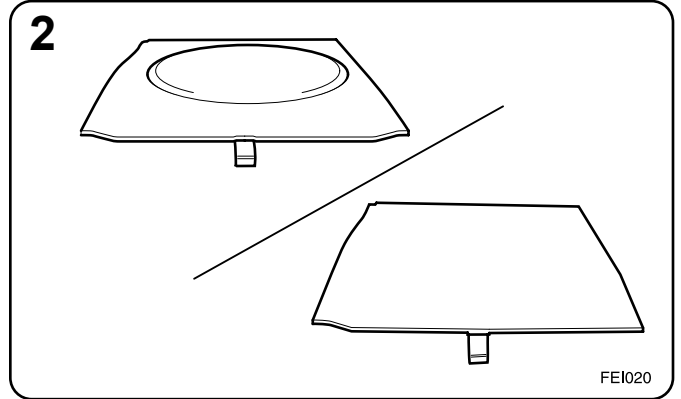
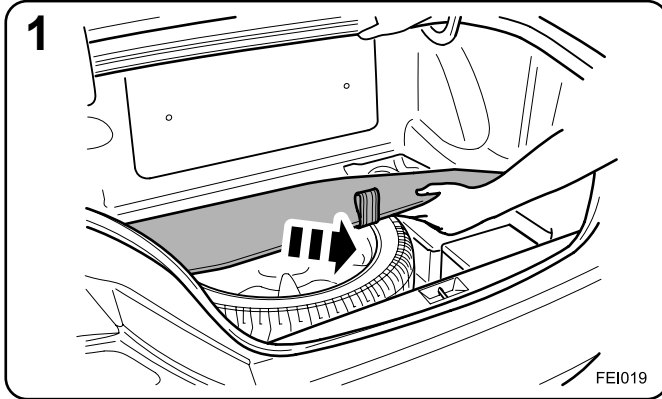
Part No. **C2S 35865**



FITTING INSTRUCTIONS, INSTRUCTIONS DE MONTAGE,
 EINBAUANLEITUNG, ISTRUZIONI DI MONTAGGIO,
 INSTRUCCIONES DE MONTAJE, 取扱説明書

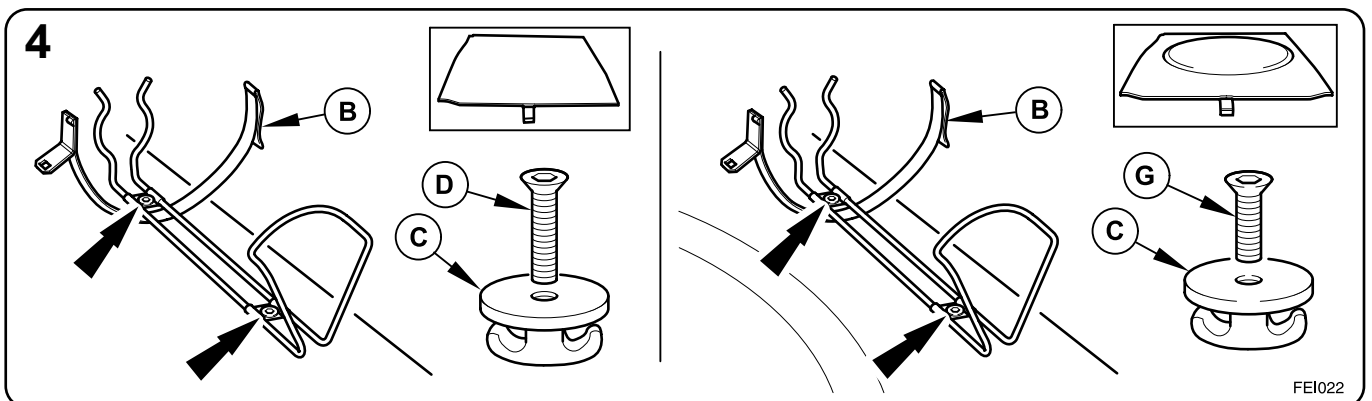
V8/XJ Series

Fire Extinguisher, Extincteur, Feuerlöscher,
 Extintor, Estintore, 消火器



Notes: Hinweise: Note: Nota: 注:

- 3. Locate holes on underside of board.
- 3. Localiser les trous sur la partie inférieure du plancher.
- 3. Bohrungen auf Unterseite der Platte verwenden.
- 3. Localice los orificios situados debajo de la moqueta.
- 3. Individuare i fori sul lato inferiore del pannello.
- 3. ボード下部にある穴を位置決めます。



MY 1998 →

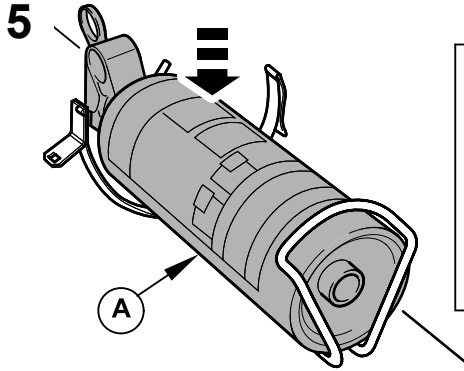
Part No. C2S 35865



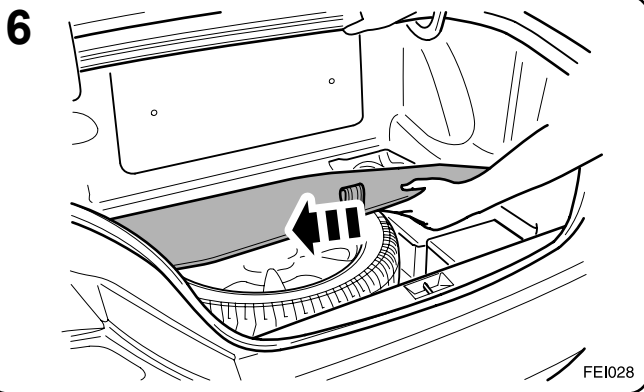
FITTING INSTRUCTIONS, INSTRUCTIONS DE MONTAGE,
EINBAUANLEITUNG, ISTRUZIONI DI MONTAGGIO,
INSTRUCCIONES DE MONTAJE, 取扱説明書

V8/XJ Series

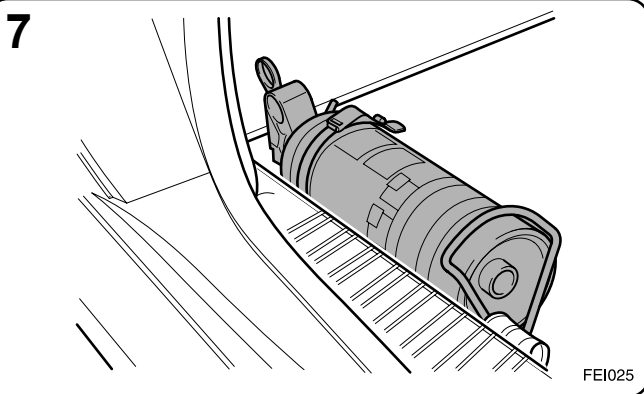
Fire Extinguisher, Extincteur, Feuerlöscher,
Extintor, Estintore, 消火器



FEI007



FEI028

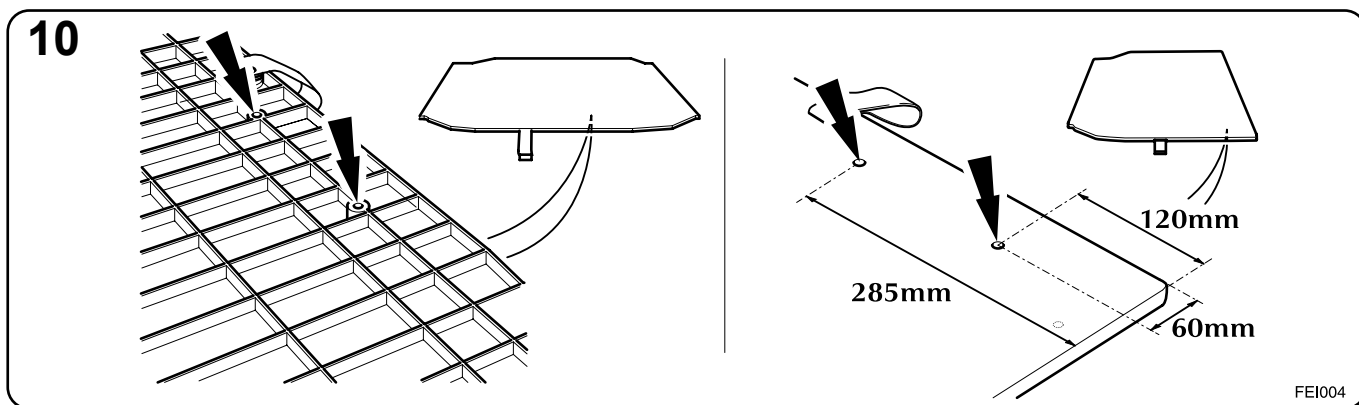
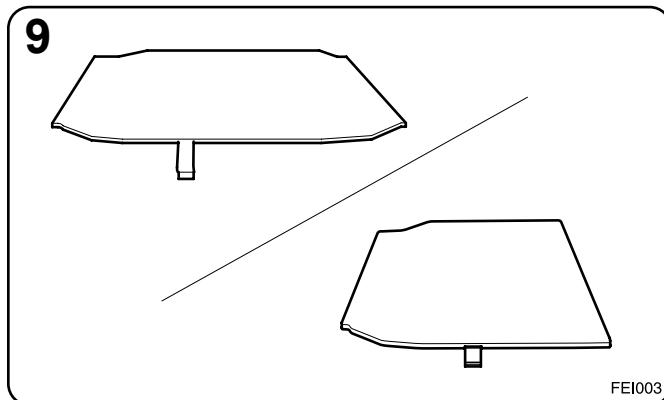
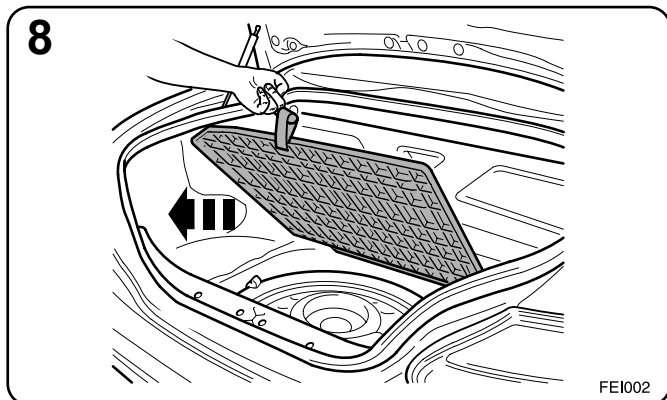


FEI025



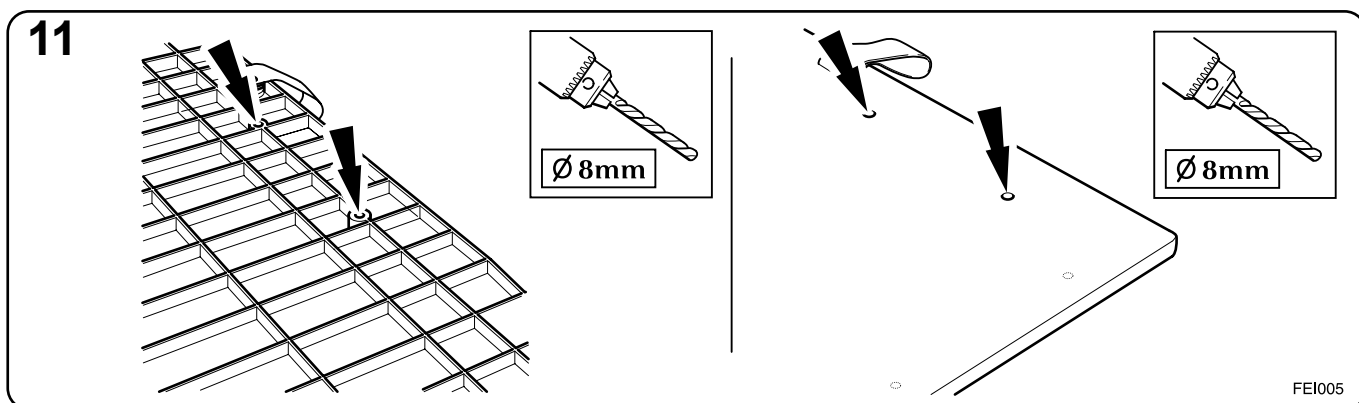
XK Series

**Fire Extinguisher, Extincteur, Feuerlöscher,
 Extintor, Estintore, 消火器**



Notes: Hinweise: Note: Nota: 注:

- 10. Locate holes on underside of board.
- 10. Localiser les trous sur la partie inférieure du plancher.
- 10. Bohrungen auf Unterseite der Platte verwenden
- 10. Localice los orificios situados debajo de la moqueta.
- 10. Individuare i fori sul lato inferiore del pannello.
- 10. ボード下部にある穴を位置決めします。



MY 1998 →

Part No. C2S 35865

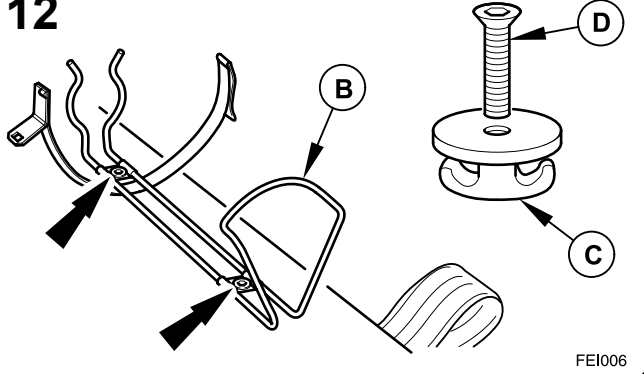


FITTING INSTRUCTIONS, INSTRUCTIONS DE MONTAGE,
EINBAUANLEITUNG, ISTRUZIONI DI MONTAGGIO,
INSTRUCCIONES DE MONTAJE, 取扱説明書

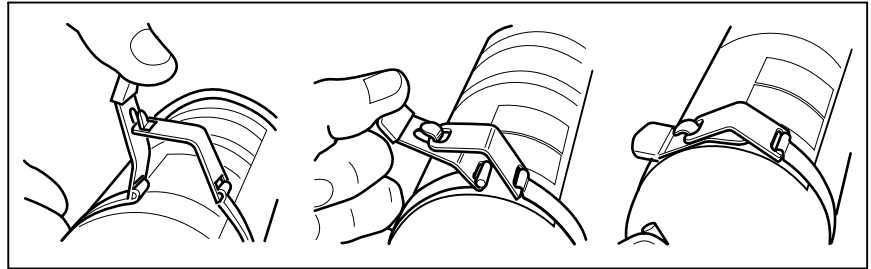
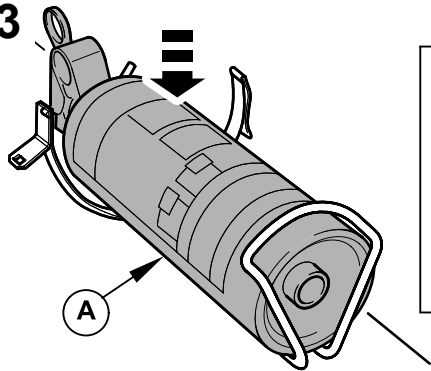
XK Series

**Fire Extinguisher, Extincteur, Feuerlöscher,
Extintor, Estintore, 消火器**

12

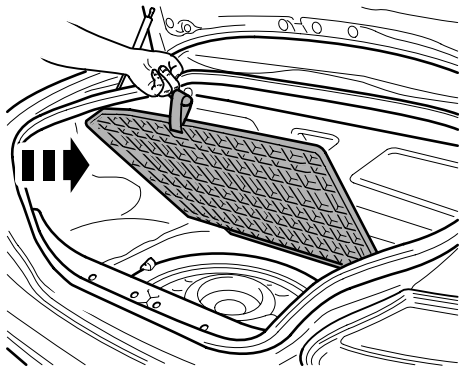


13



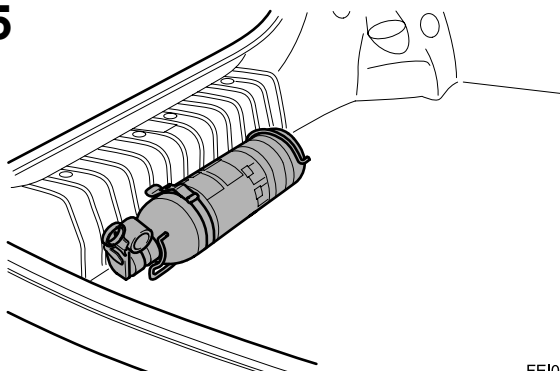
FEI007

14



FEI026

15



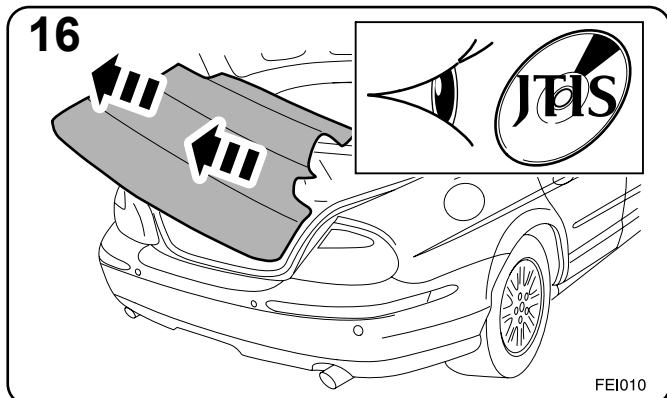
FEI009

MY 1998 →

Part No. C2S 35865

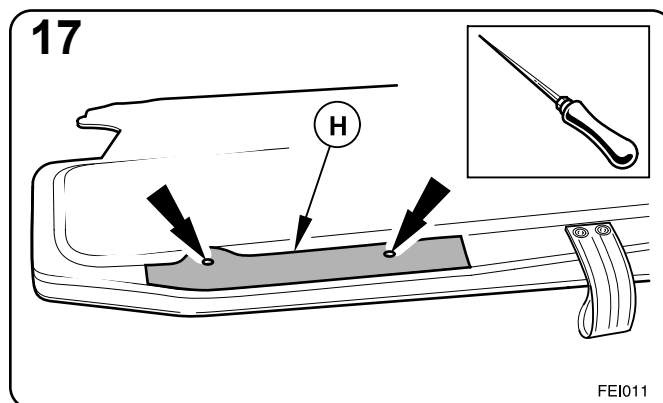
S-TYPE

**Fire Extinguisher, Extincteur, Feuerlöscher,
 Extintor, Estintore, 消火器**



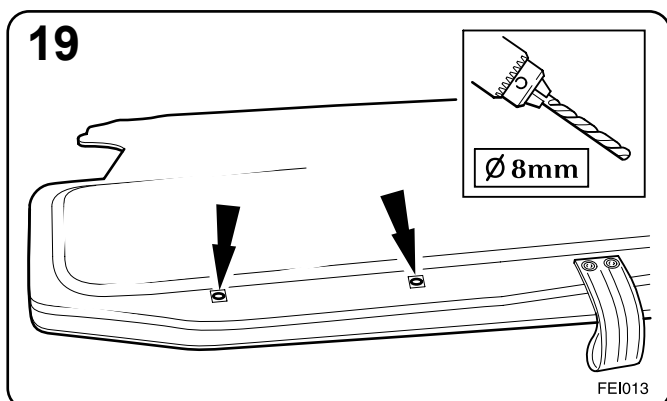
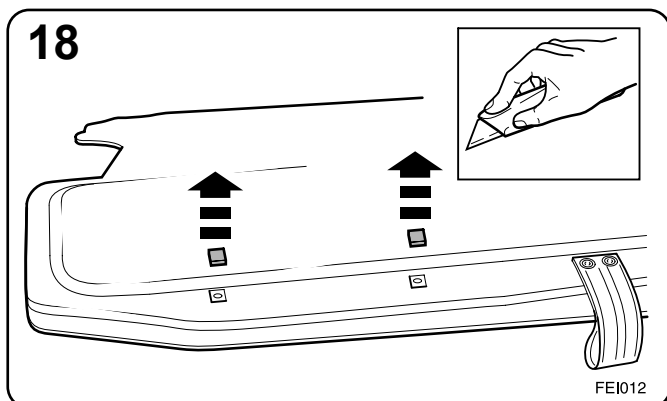
Notes: Hinweise: Note: Nota: 注:

- 17-19. Early Models
- 17-19. Anciens modèles
- 17-19. Ältere Modelle
- 17-19. Modelos anteriores
- 17-19. Modelli precedenti
- 17-19. 初期モデル



Notes: Hinweise: Note: Nota: 注:

- 18. Cut away black trim.
- 18. Découper le garnissage noir.
- 18. Schwarze Verkleidung ausschneiden
- 18. Corte el material de revestimiento negro.
- 18. Tagliare il rivestimento nero.
- 18. 黒色のトリムを切り取ります。



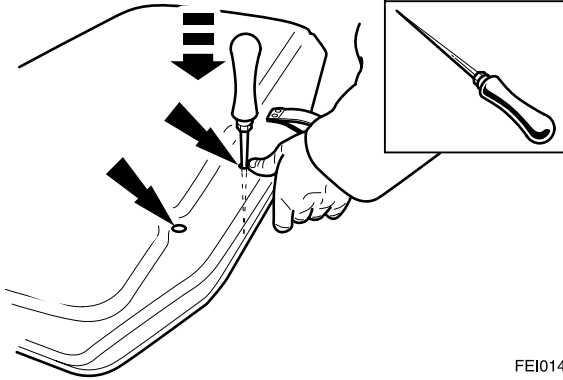
MY 1999 →

Part No. C2S 35865

S-TYPE

**Fire Extinguisher, Extincteur, Feuerlöscher,
Extintor, Estintore, 消火器**

20

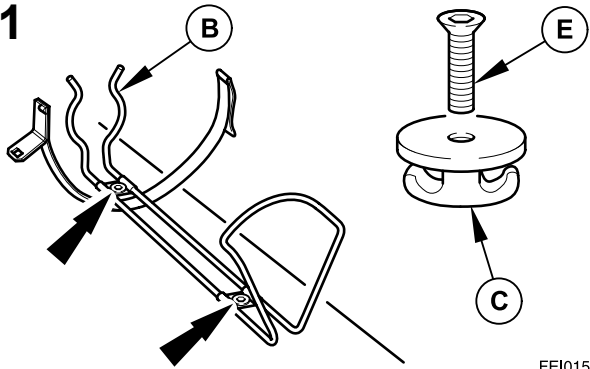


FEI014

Notes: Hinweise: Note: Nota: 注:

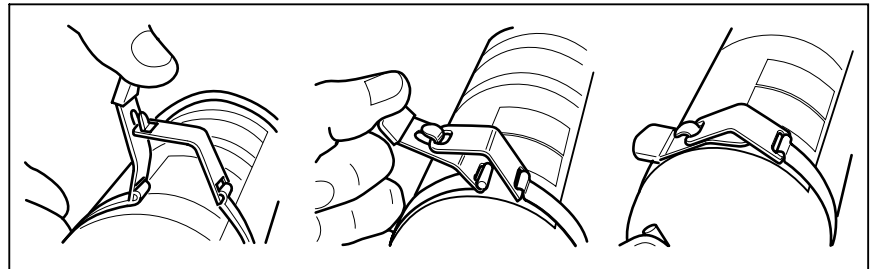
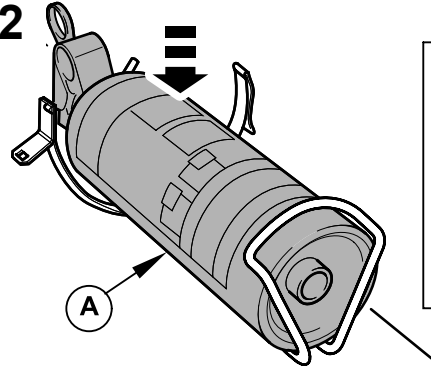
- 20. Locate holes in pre-drilled trunk board.
- 20. Localiser les trous percés au préalable sur le plancher de coffre à bagages.
- 20. Vorgebohrte Bohrungen in der Platte verwenden.
- 20. Localice los orificios, que se habían taladrado previamente, situados en la moqueta del maletero.
- 20. Individuare i fori sul pannello pre-forato del bagagliaio.
- 20. 予め穿孔されたトランク ボードの穴を見つけます。

21



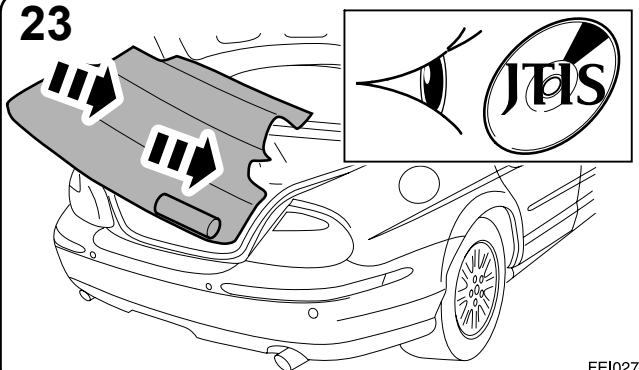
FEI015

22



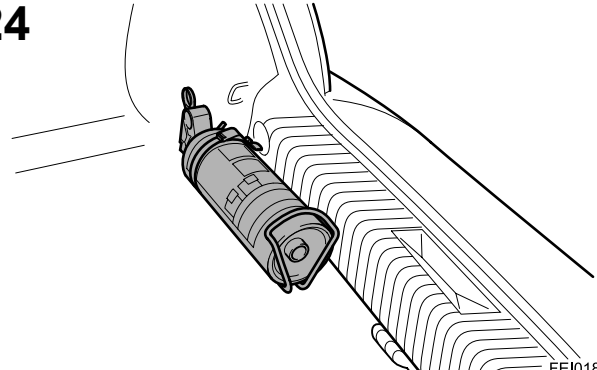
FEI007

23



FEI027

24



FEI018

MY 1999 →

Part No. C2S 35865

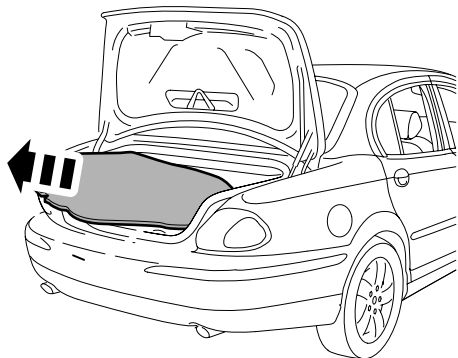


FITTING INSTRUCTIONS, INSTRUCTIONS DE MONTAGE,
 EINBAUANLEITUNG, ISTRUZIONI DI MONTAGGIO,
 INSTRUCCIONES DE MONTAJE, 取扱説明書

X-TYPE

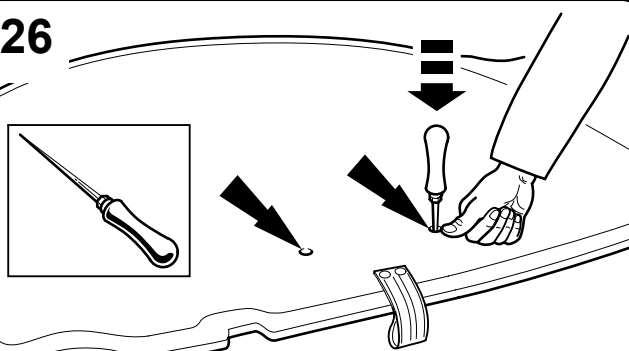
**Fire Extinguisher, Extincteur, Feuerlöscher,
 Extintor, Estintore, 消火器**

25



FEI029

26

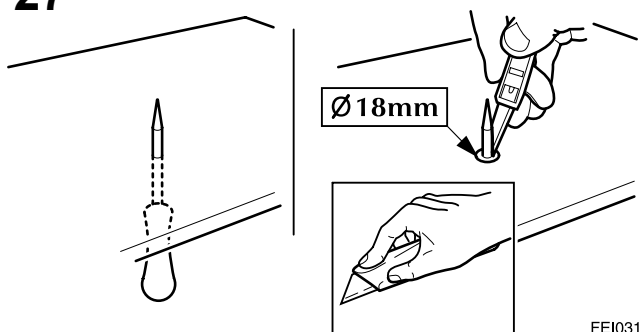


FEI030

Notes: Hinweise: Note: Nota: 注:

- 26. Locate holes in pre drilled trunk board.
- 26. Localiser les trous percés au préalable sur le plancher de coffre à bagages.
- 26. Vorgebohrte Bohrungen in der Platte verwenden.
- 26. Localice los orificios, que se habían taladrado previamente, situados en la moqueta del maletero.
- 26. Individuare i fori sul pannello pre-forato del bagagliaio.
- 26. 予め穿孔されたトランク ボードの穴を見つけます。

27

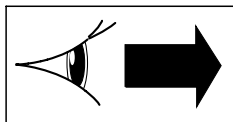


FEI031

Notes: Hinweise: Note: Nota: 注:

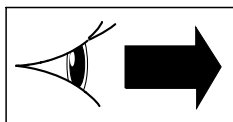
- 27. Cut away cloth trim around hole.
- 27. Découper le garnissage tissu autour du trou.
- 27. Verkleidung im Bereich der Bohrung ausschneiden.
- 27. Corte el material de revestimiento alrededor del orificio.
- 27. Tagliare il rivestimento in tessuto attorno al foro.
- 27. 穴の周囲のクロス トリムを切り取ります。

X-TYPE 2001-2004.25



28-30

X-TYPE 2004.25



31

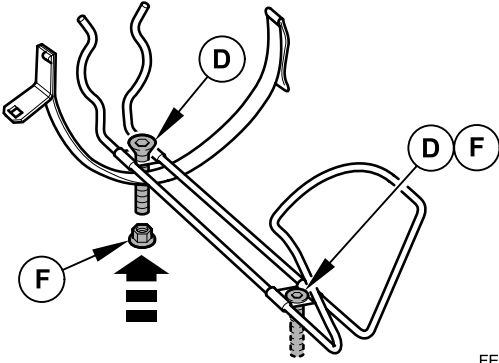
MY **2001** →

Part No. **C2S 35865**

X-TYPE

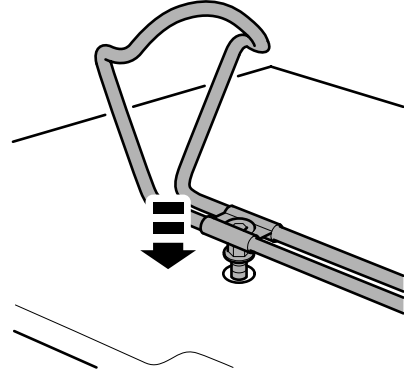
**Fire Extinguisher, Extincteur, Feuerlöscher,
Extintor, Estintore, 消火器**

28



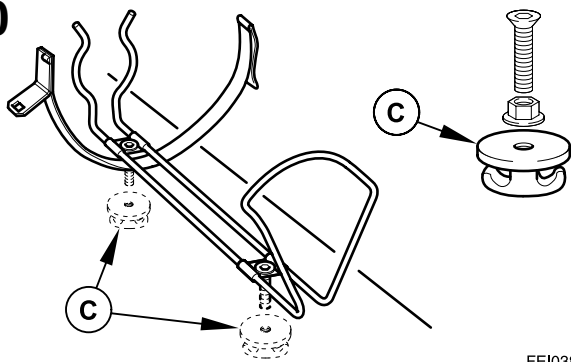
FEI032

29



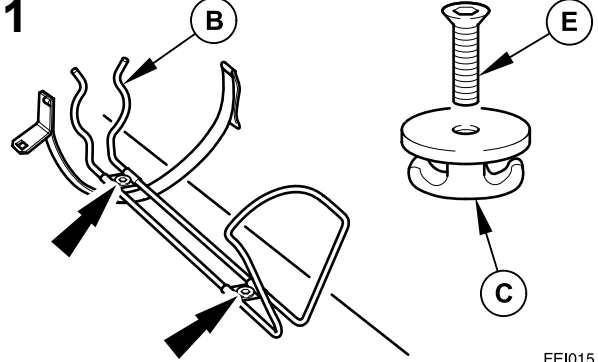
FEI033

30



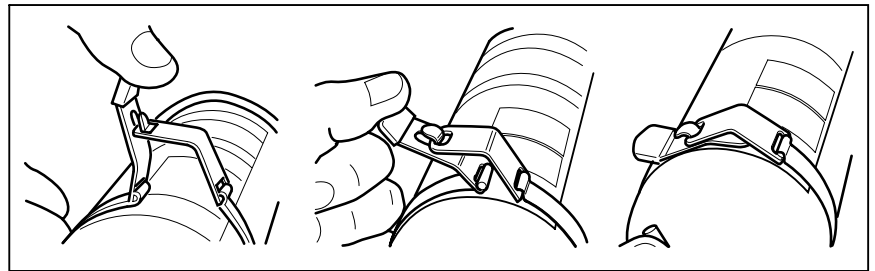
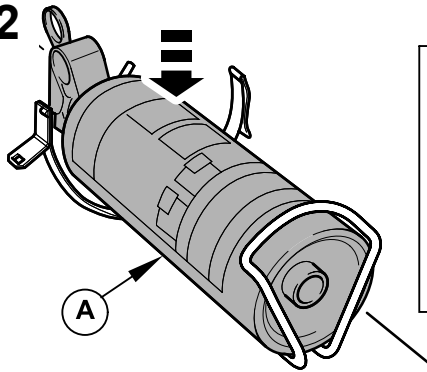
FEI038

31



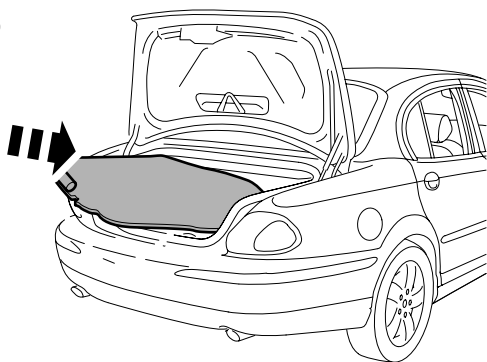
FEI015

32



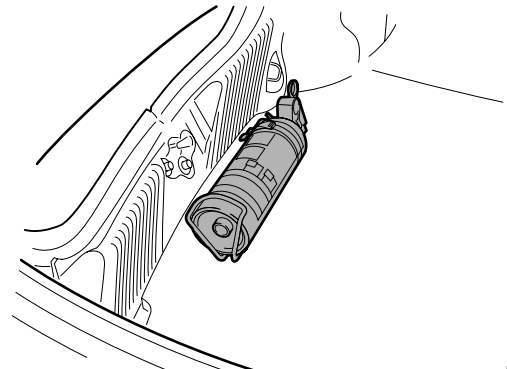
FEI007

33



FEI036

34



FEI037

MY 2004.25 →

Part No. C2S 35865

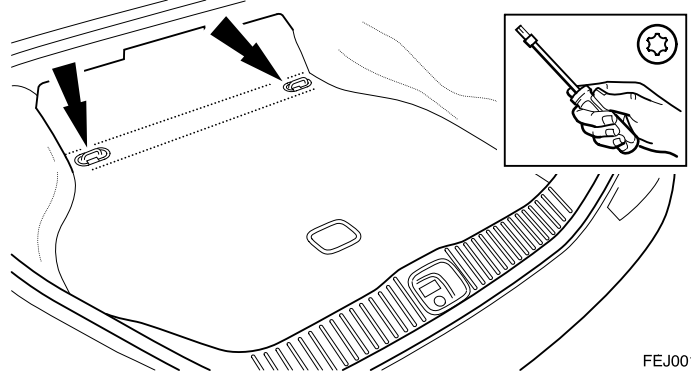
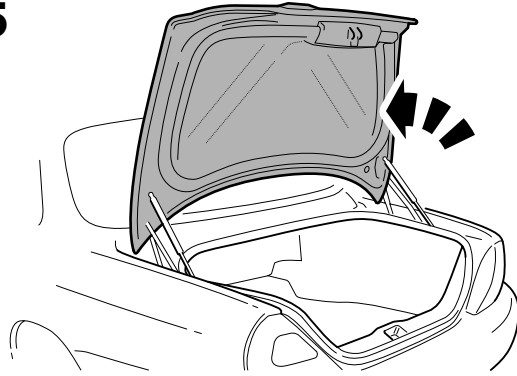


FITTING INSTRUCTIONS, INSTRUCTIONS DE MONTAGE,
EINBAUANLEITUNG, ISTRUZIONI DI MONTAGGIO,
INSTRUCCIONES DE MONTAJE, 取扱説明書

The XJ, La XJ,
Der XJ, XJ

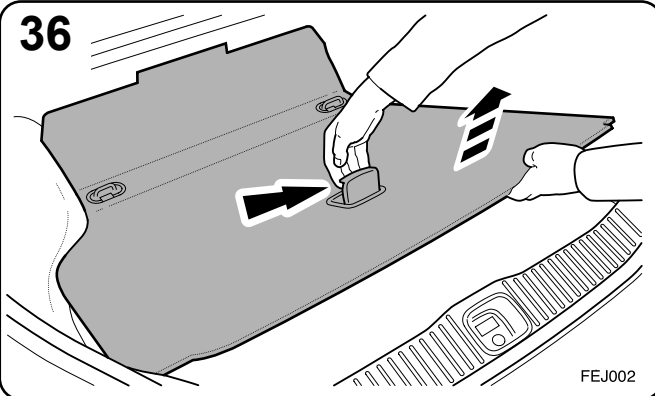
Fire Extinguisher, Extincteur, Feuerlöscher,
Extintor, Estintore, 消火器

35



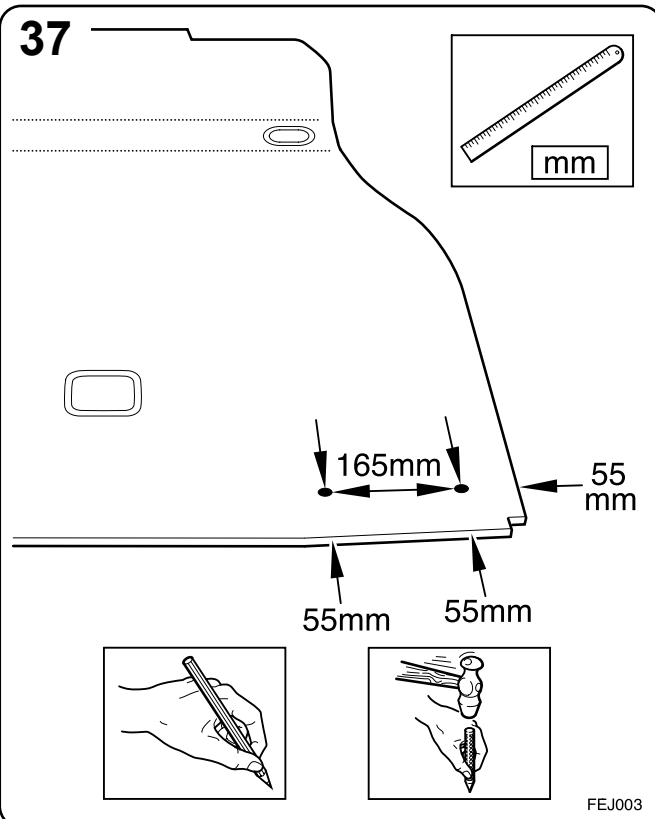
FEJ001

36



FEJ002

37



FEJ003

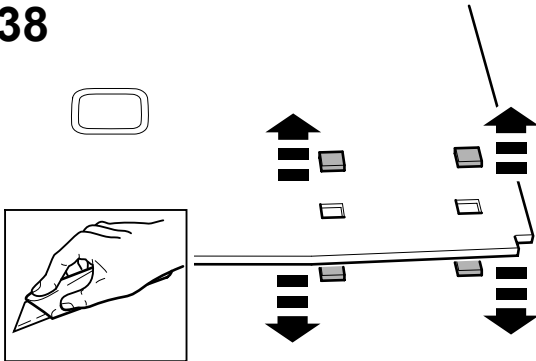
MY 2003

Part No. C2S 35865

The XJ, La XJ,
Der XJ, XJ

Fire Extinguisher, Extincteur, Feuerlöscher,
Extintor, Estintore, 消火器

38

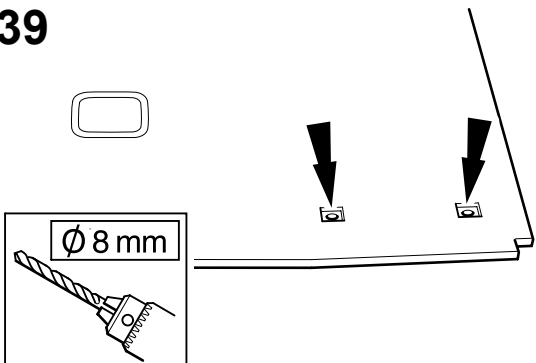


FEJ004

Notes: Hinweise: Note: Nota: 注

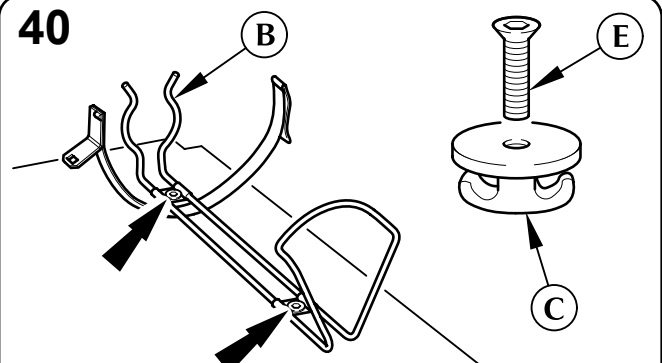
- 38. Cut away cloth trim around hole.
- 38. Découper le garnissage tissu autour du trou.
- 38. Verkleidung im Bereich der Bohrung ausschneiden.
- 38. Corte el material de revestimiento alrededor del orificio.
- 38. Tagliare il rivestimento in tessuto attorno al foro.
- 38. 穴の周囲のクロス トリムを切り取ります。

39



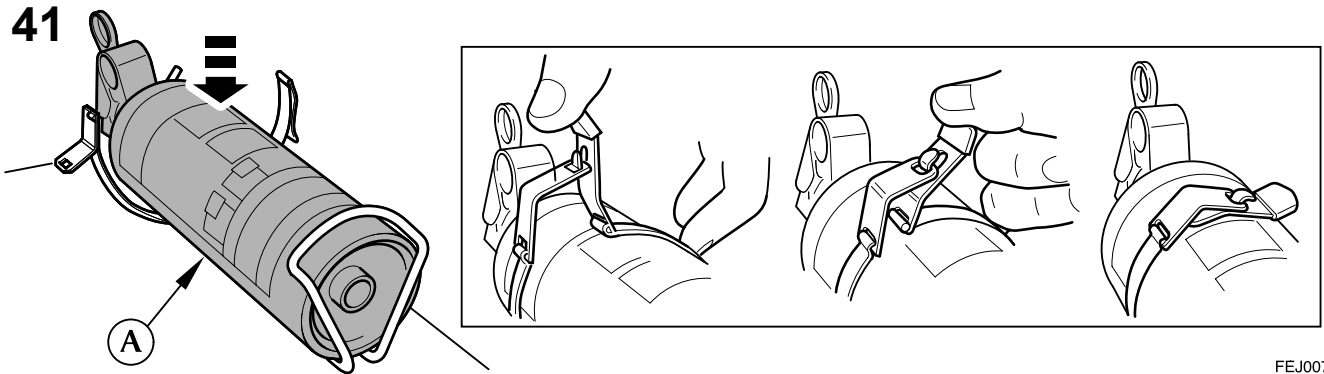
FEJ005

40



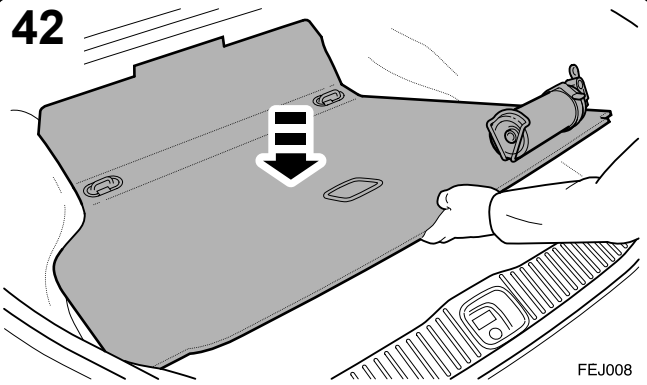
FEJ006

41



FEJ007

42



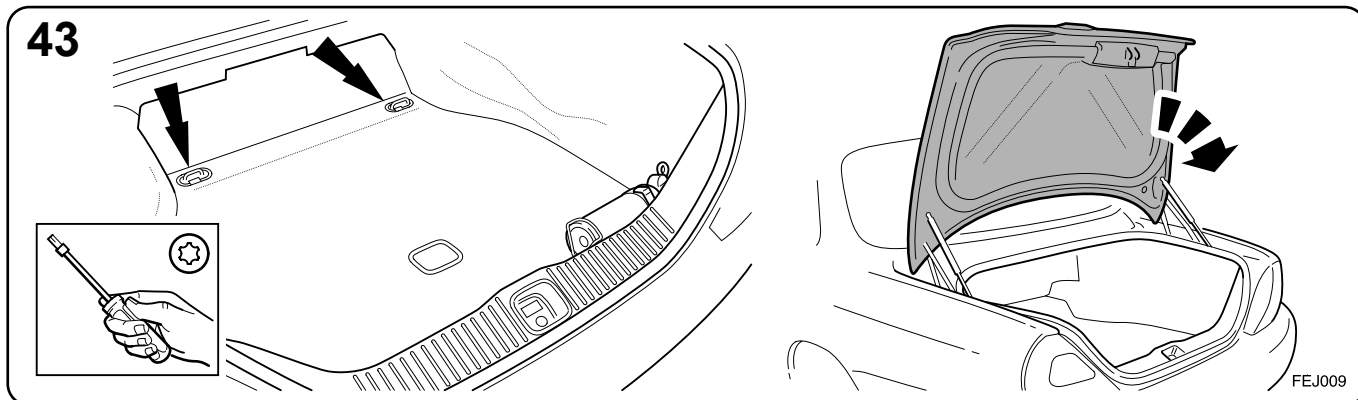
FEJ008



FITTING INSTRUCTIONS, INSTRUCTIONS DE MONTAGE,
EINBAUANLEITUNG, ISTRUZIONI DI MONTAGGIO,
INSTRUCCIONES DE MONTAJE, 取扱説明書

The XJ, La XJ,
Der XJ, XJ

Fire Extinguisher, Extincteur, Feuerlöscher,
Extintor, Estintore, 消火器



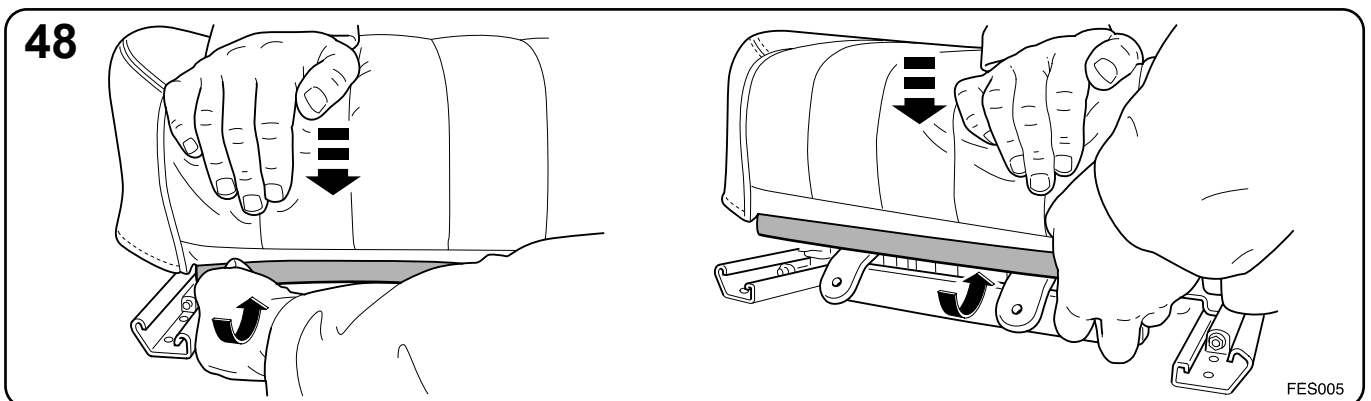
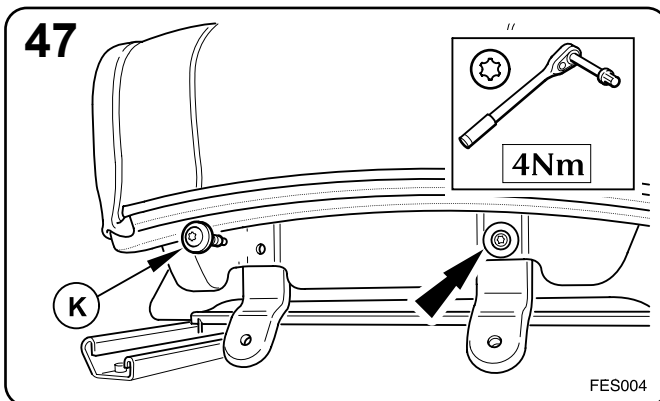
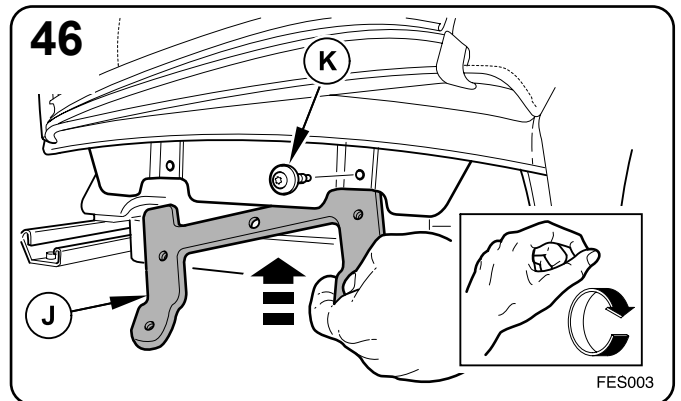
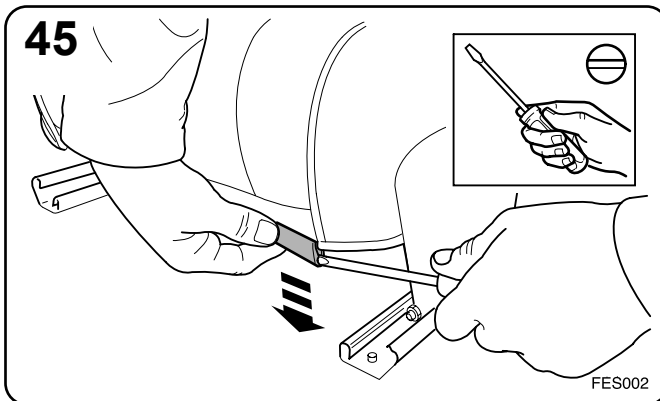
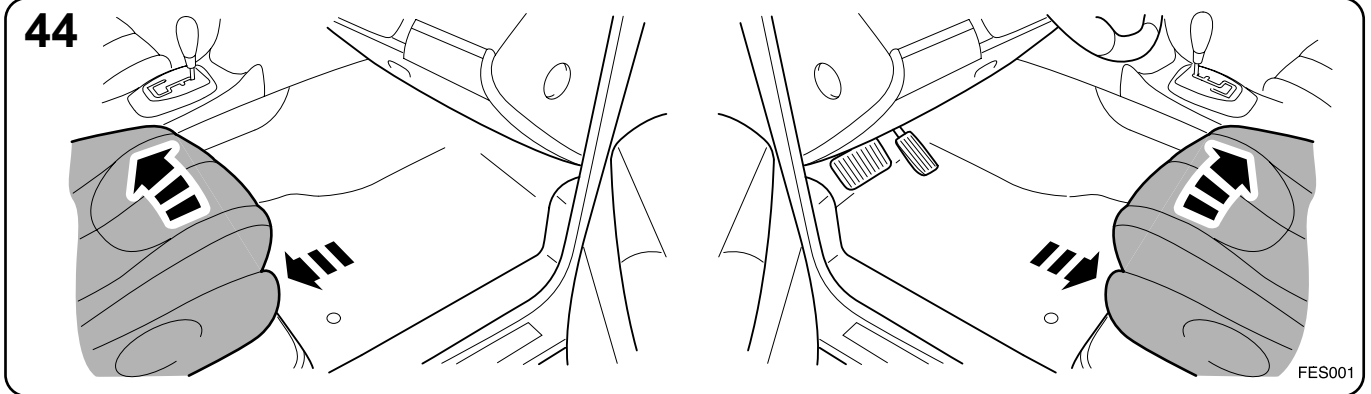
MY

2003

Part No. C2S 35865

S-TYPE &
 The XJ, La XJ,
 Der XJ, XJ

Fire Extinguisher, Extincteur, Feuerlöscher,
 Extintor, Estintore, 消火器

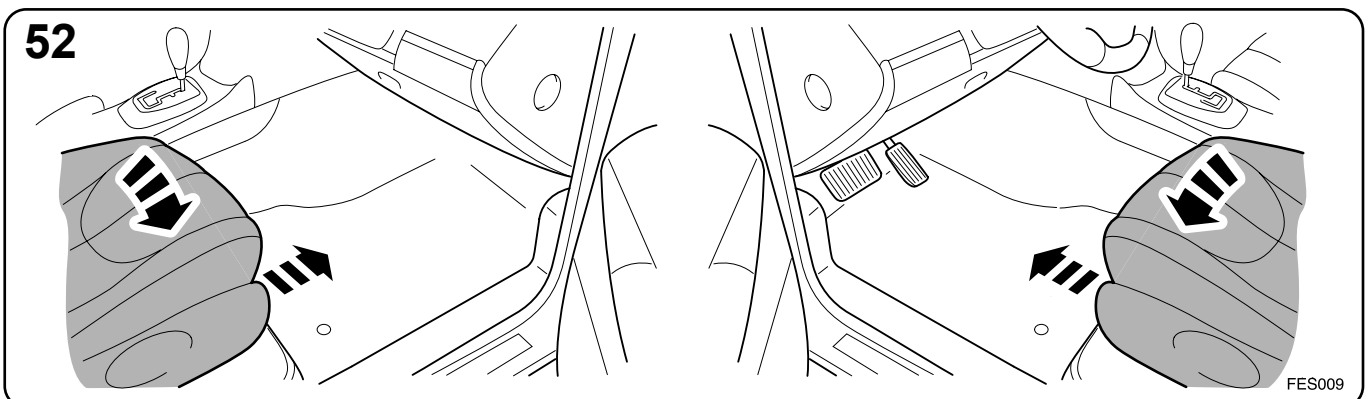
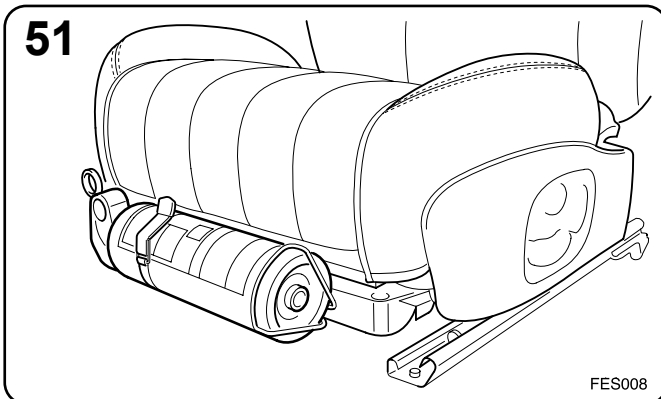
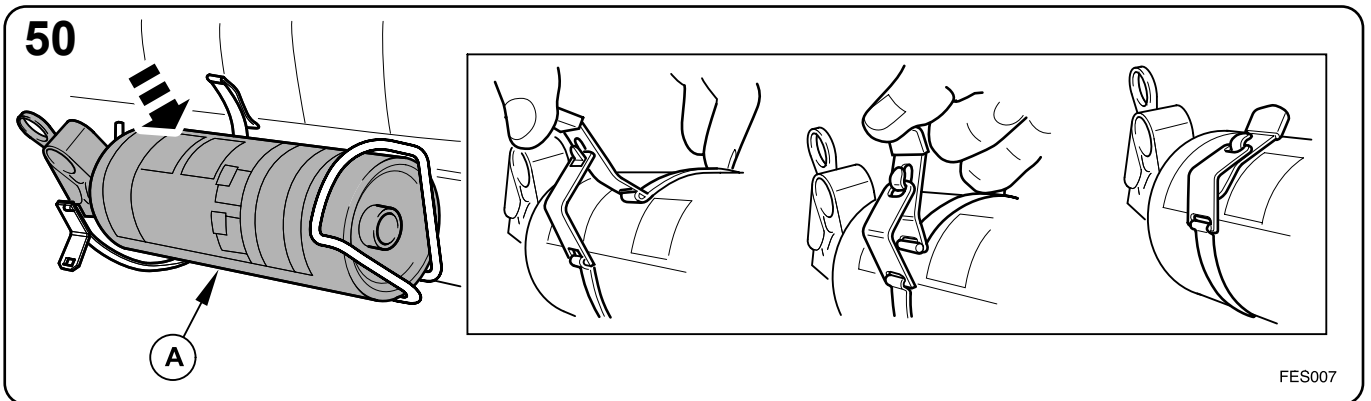
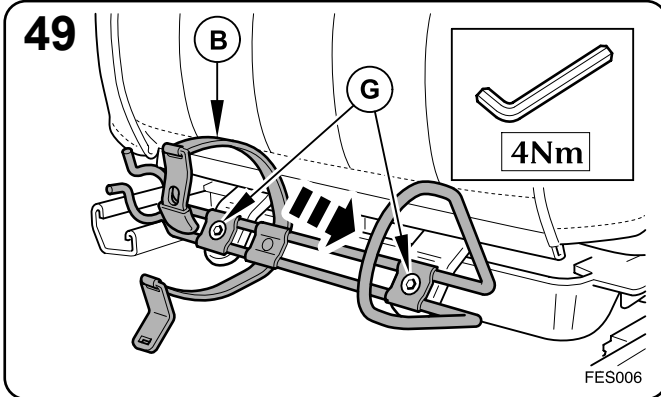




FITTING INSTRUCTIONS, INSTRUCTIONS DE MONTAGE,
 EINBAUANLEITUNG, ISTRUZIONI DI MONTAGGIO,
 INSTRUCCIONES DE MONTAJE, 取扱説明書

S-TYPE &
 The XJ, La XJ,
 Der XJ, XJ

Fire Extinguisher, Extincteur, Feuerlöscher,
 Extintor, Estintore, 消火器



MY 1999 →

Part No. C2S 35865

TEMPLATE (H), S-TYPE only

Key,

a. Fixing holes - 8mm dia.

GABARIT (H), S-TYPE uniquement

Clé,

a. Trous de fixation – 8 mm de diamètre

SAGOMA (H), (solo S-TYPE)

Legenda,

a. Fori di fissaggio – diametro 8 mm

SCHABLONE (H), nur S-TYPE

Schlüssel,

a. Befestigungsbohrungen – 8 mm Durchmesser.

PLANTILLA (H), (S-TYPE solamente)

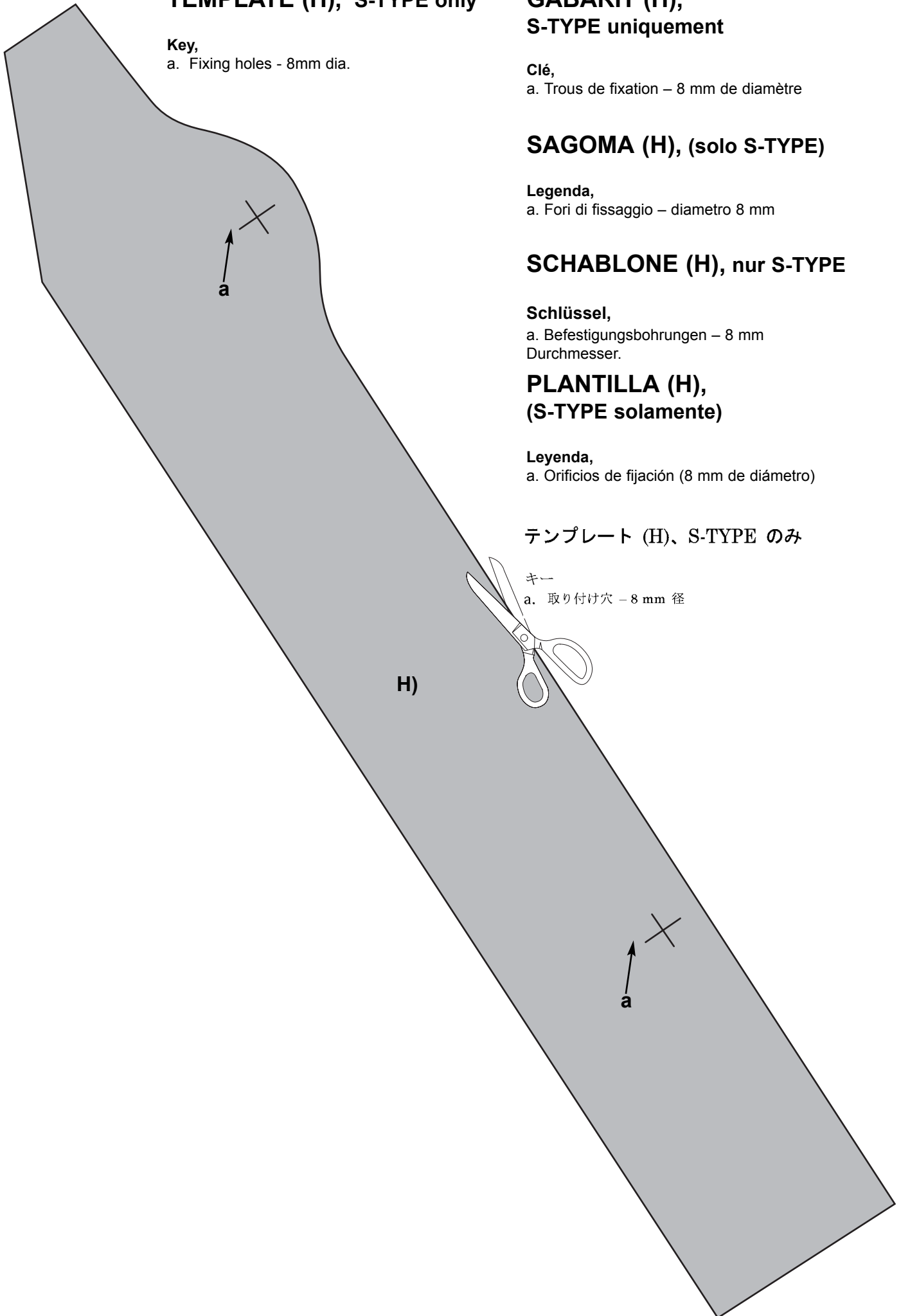
Legenda,

a. Orificios de fijación (8 mm de diámetro)

テンプレート (H)、S-TYPE のみ

キー

a. 取り付け穴 – 8 mm 径

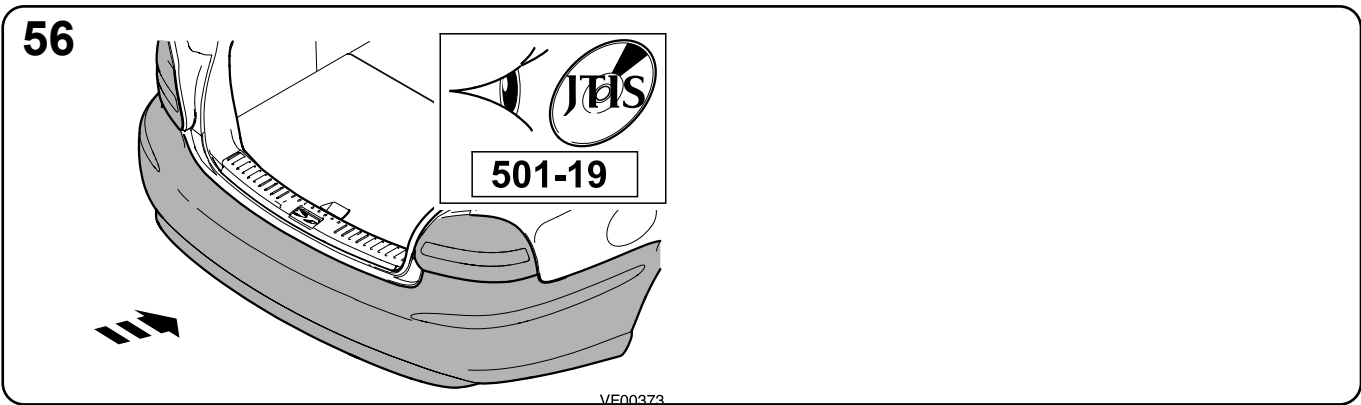
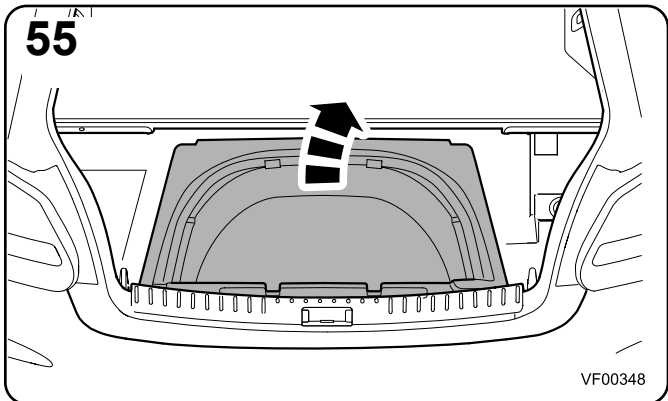
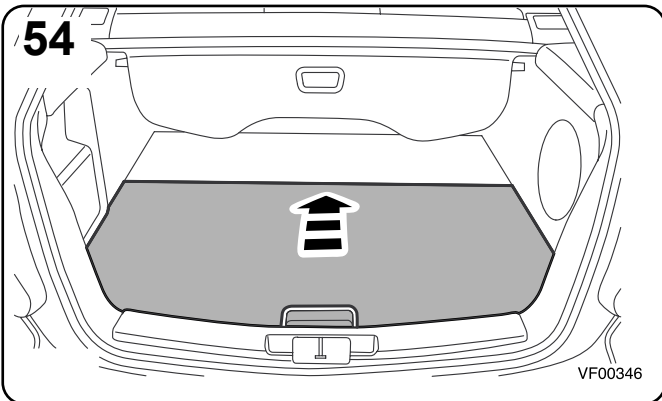
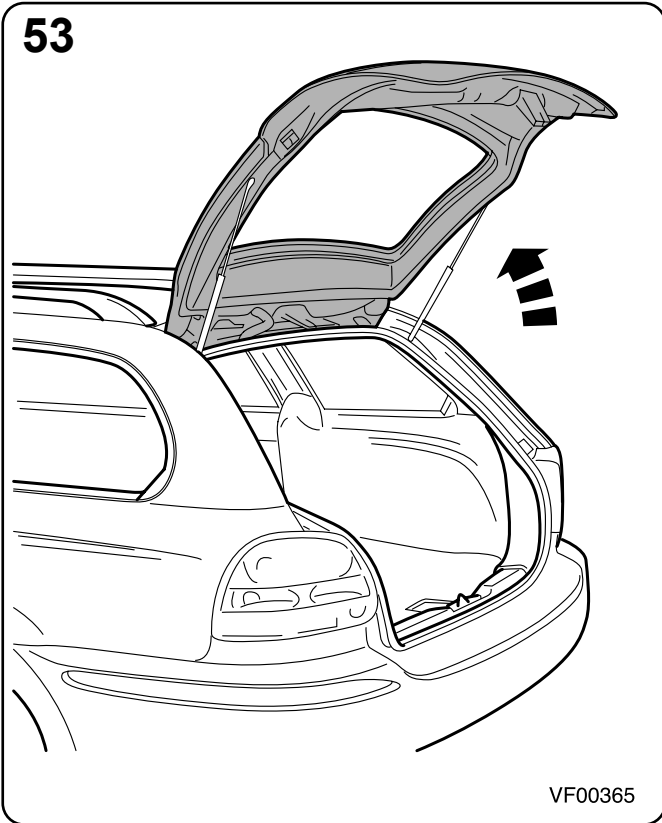




FITTING INSTRUCTIONS, INSTRUCTIONS DE MONTAGE,
EINBAUANLEITUNG, ISTRUZIONI DI MONTAGGIO,
INSTRUCCIONES DE MONTAJE, 取扱説明書

**X-TYPE ESTATE
/ WAGON**

**Fire Extinguisher, Extincteur, Feuerlöscher,
Extintor, Estintore, 消火器**



MY 2004.5 →

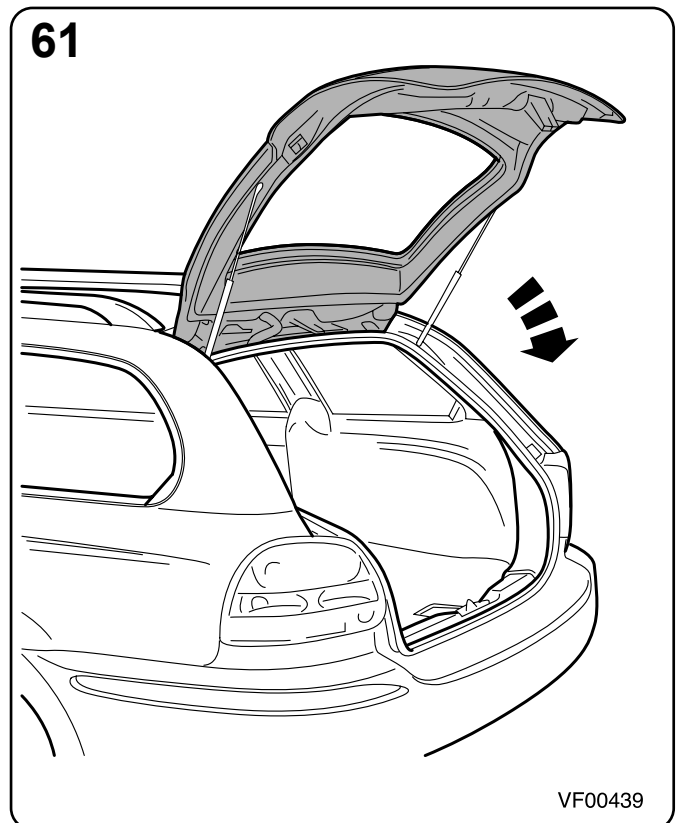
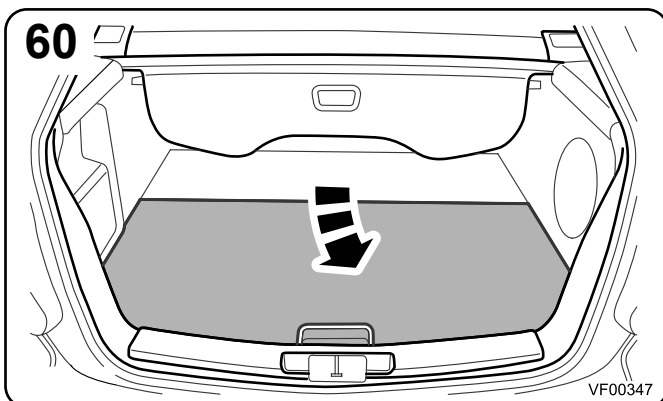
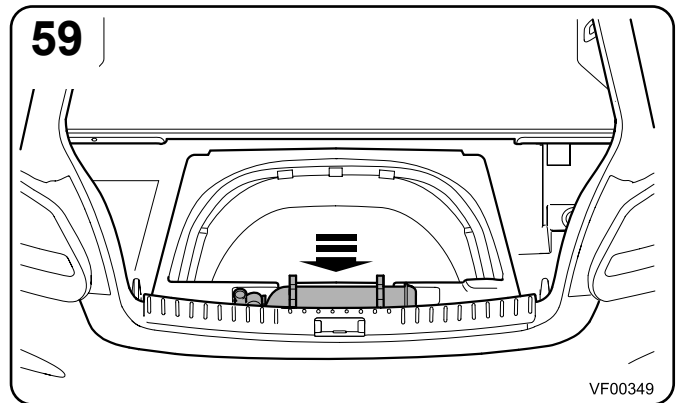
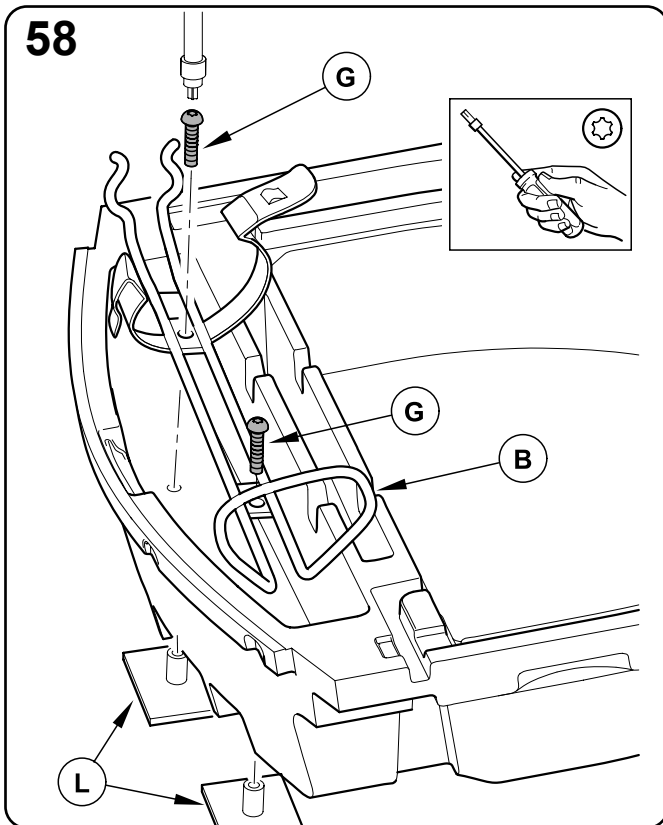
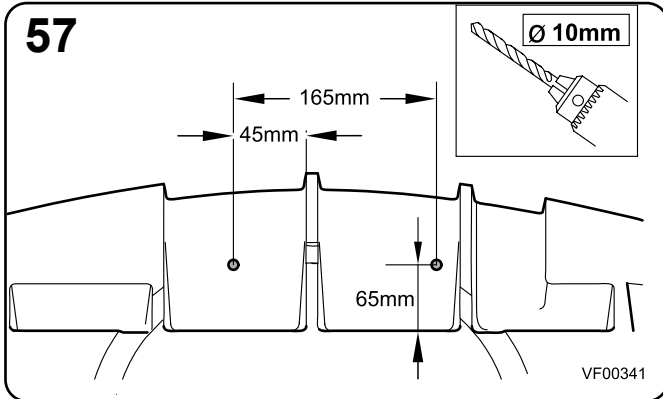
Part No. C2S 35865



FITTING INSTRUCTIONS, INSTRUCTIONS DE MONTAGE,
 EINBAUANLEITUNG, ISTRUZIONI DI MONTAGGIO,
 INSTRUCCIONES DE MONTAJE, 取扱説明書

**X-TYPE ESTATE
 / WAGON**

**Fire Extinguisher, Extincteur, Feuerlöscher,
 Extintor, Estintore, 消火器**



MY 2004.5 →

Part No. C2S 35865