

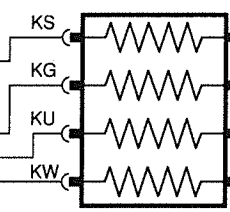
ELECTRONIC CONTROL UNIT

- 1 ECU GROUND
- 19 THROTTLE POT. GROUND SIGNAL
- 2
- 20 THROTTLE POT. POSITIVE
- 3 FULL LOAD SIGNAL
- 21 AIR TEMP. SIGNAL
- 4 O2 SENSOR INTEGRATE
- 22 MAIN FEED
- 5 COOLANT TEMP. SIGNAL
- 23 O2 SENSOR SHIELD
- 6 O2 SENSOR BANK A
- 24 O2 SENSOR BANK B
- 7 THROTTLE POT. WIPER
- 25 O2 SENSING DISABLE
- 8 BANK B INJECTORS "ON"
- 26 START SIGNAL
- 9 BANK B INJECTORS "ON"
- 27 BANK B INJECTORS "ON"
- 10 O2 SENSOR INTEGRATE
- 28 BANK B INJECTORS "ON"
- 11 BANK B INJECTORS "HOLD"
- 29 BANK B INJECTORS "HOLD"
- 12 BANK A INJECTORS "HOLD"
- 30 BANK A INJECTORS "HOLD"
- 13 BANK A INJECTORS "ON"
- 31 BANK A INJECTORS "ON"
- 14 BANK A INJECTORS "ON"
- 32 BANK A INJECTORS "ON"
- 15 FUEL PUMP RELAY
- 33
- 16 INJECTOR GROUNDS
- 34 INJECTOR GROUNDS
- 17 INJECTOR GROUNDS
- 35 INJECTOR GROUNDS
- 18 ENGINE SPEED SIGNAL

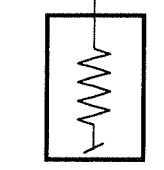
FEEDBACK MONITOR SOCKETS

- 1 B
- 19 YB
- 2
- 20 WS
- 3
- 21 RU
- 4
- 22 GW
- 5
- 23 KB
- 6
- 24 UO
- 7
- 25 SHIELD
- 8
- 26 G
- 9
- 27 G
- 10
- 28 YW
- 11
- 29 BG
- 12
- 30 OS
- 13
- 31 OS
- 14
- 32 OG
- 15
- 33 GR
- 16
- 34 OG
- 17
- 35 KS
- 18
- 36 KG
- 37 KU
- 38 KW
- 39 OU
- 40 OW
- 41 O

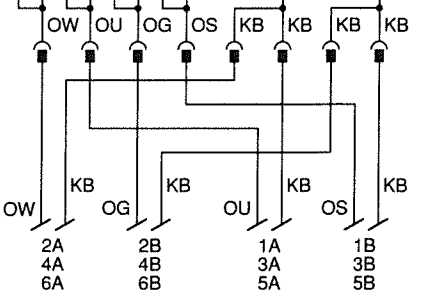
POWER RESISTORS



AMPLIFIER



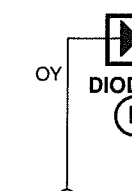
INJECTORS



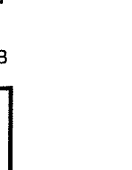
FUEL PUMP



PASSIVE RESTRAINT



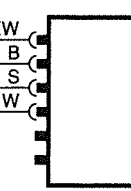
INERTIA SWITCH



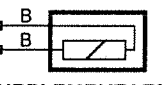
NEUTRAL SWITCH



45 SECOND TIMER



SOLENOID VACUUM VALVE



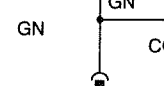
SUPPLEMENTARY AIR VALVE



IDLE RELAY (BLACK)



IDLE OVERRIDE RELAY (BLUE)



A/C FEED



