

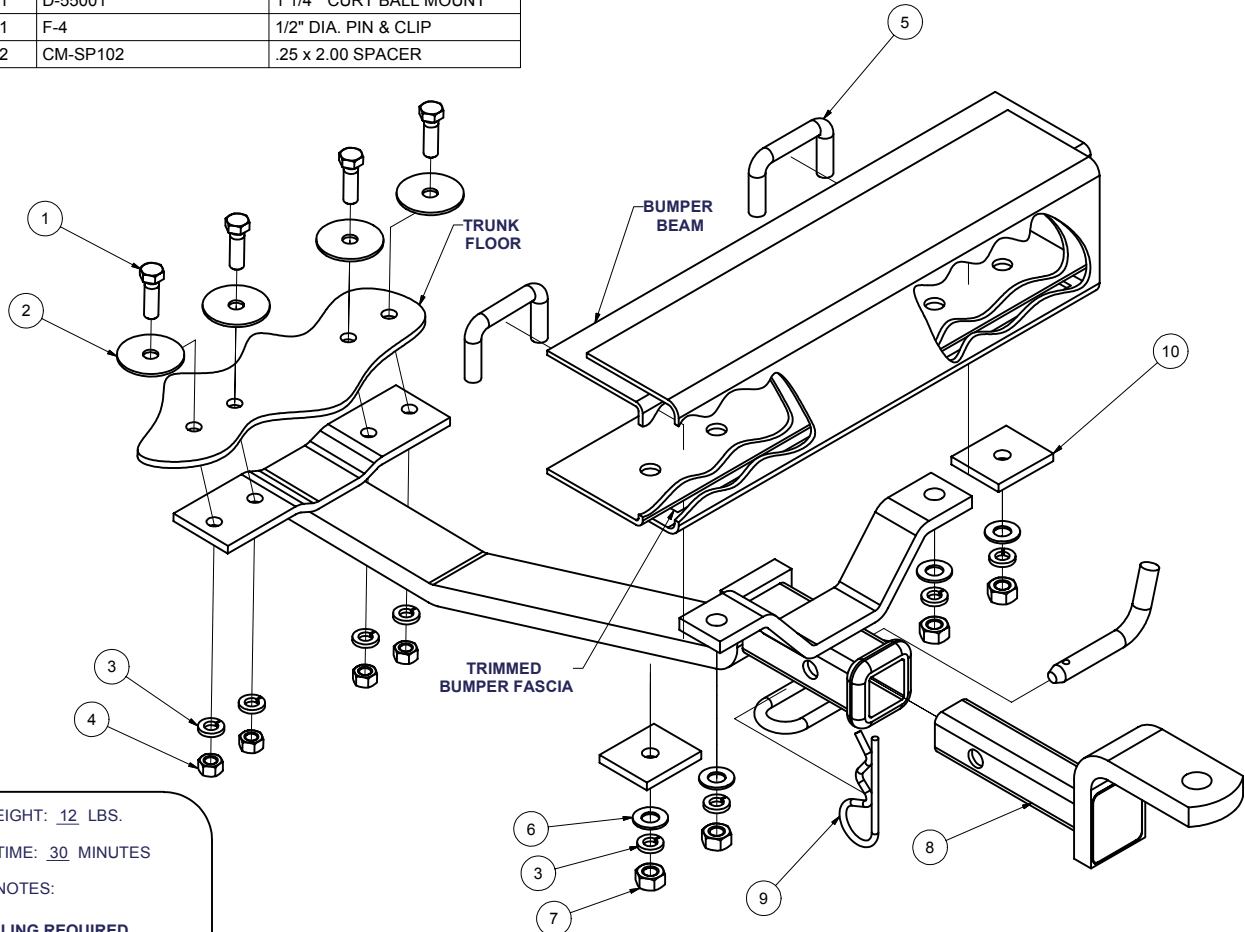


11733

JAGUARXJ-6. XJ-12. XJ-S

GROSS LOAD CAPACITY WHEN USED AS A WEIGHT CARRYING HITCH: 2,000 LBS. TRAILER WEIGHT & 200 LBS. TONGUE WEIGHT.
*****DO NOT EXCEED VEHICLE MANUFACTURER'S RECOMMENDED TOWING CAPACITY.*****

Parts List			
ITEM	QTY	PART NUMBER	DESCRIPTION
1	4	3/8 - 16 x 1 1/4	HEX BOLT
2	4	3/8"	FENDER WASHER
3	8	3/8"	LOCK WASHER
4	4	3/8 - 16	HEX NUT
5	2	7/16-14 x 1.63 x 2.50 C-C	SQ. U-BOLT
6	4	7/16	WASHER
7	4	7/16-14	HEX NUT
8	1	D-55001	1 1/4" CURT BALL MOUNT
9	1	F-4	1/2" DIA. PIN & CLIP
10	2	CM-SP102	.25 x 2.00 SPACER



HITCH WEIGHT: 12 LBS.

INSTALL TIME: 30 MINUTES

INSTALL NOTES:

DRILLING REQUIRED

INSTALLATION STEPS

- 1) Remove the material in vehicle's trunk. Hold hitch in place under trunk floor and rear bumper, and mark area of fascia to trim away. The hitch brackets must fit directly against metal of rear bumper.
- 2) Trim bumper fascia as necessary. With hitch in position mark trunk floor and metal surface of bumper for hitch holes. Measure and mark for additional hole in bumper for U-bolts. Centerpunch holes marked.
- 3) Drill (4) holes for 3/8" diameter fasteners in trunk floor and four (4) holes 1/2" diameter in bumper beam.
- 4) Work (2) rectangular U-bolts into bumper holes. Mount hitch to car as shown.
- 5) Torque all 3/8" fasteners to 30 lb-ft. and all 7/16" fasteners to 50 lb-ft.

PERIODICALLY CHECK THIS RECEIVER HITCH TO ENSURE THAT ALL FASTENERS ARE TIGHT AND THAT ALL STRUCTURAL COMPONENTS ARE SOUND.

Curt Manufacturing Inc., warrants this product to be free of defects in material and/or workmanship at the time of retail purchase by the original purchaser. If the product is found to be defective, Curt Manufacturing Inc., may repair or replace the product, at their option, when the product is returned, prepaid, with proof of purchase. Alteration to, misuse of, or improper installation of this product voids the warranty. Curt Manufacturing Inc.'s liability is limited to repair or replacement of products found to be defective, and specifically excludes liability for incidental or consequential loss or damage.