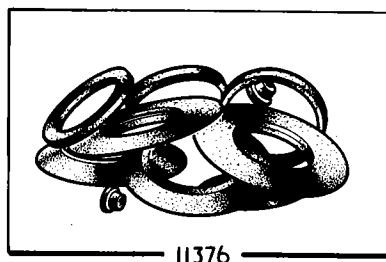
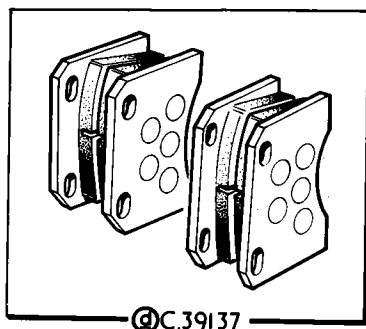
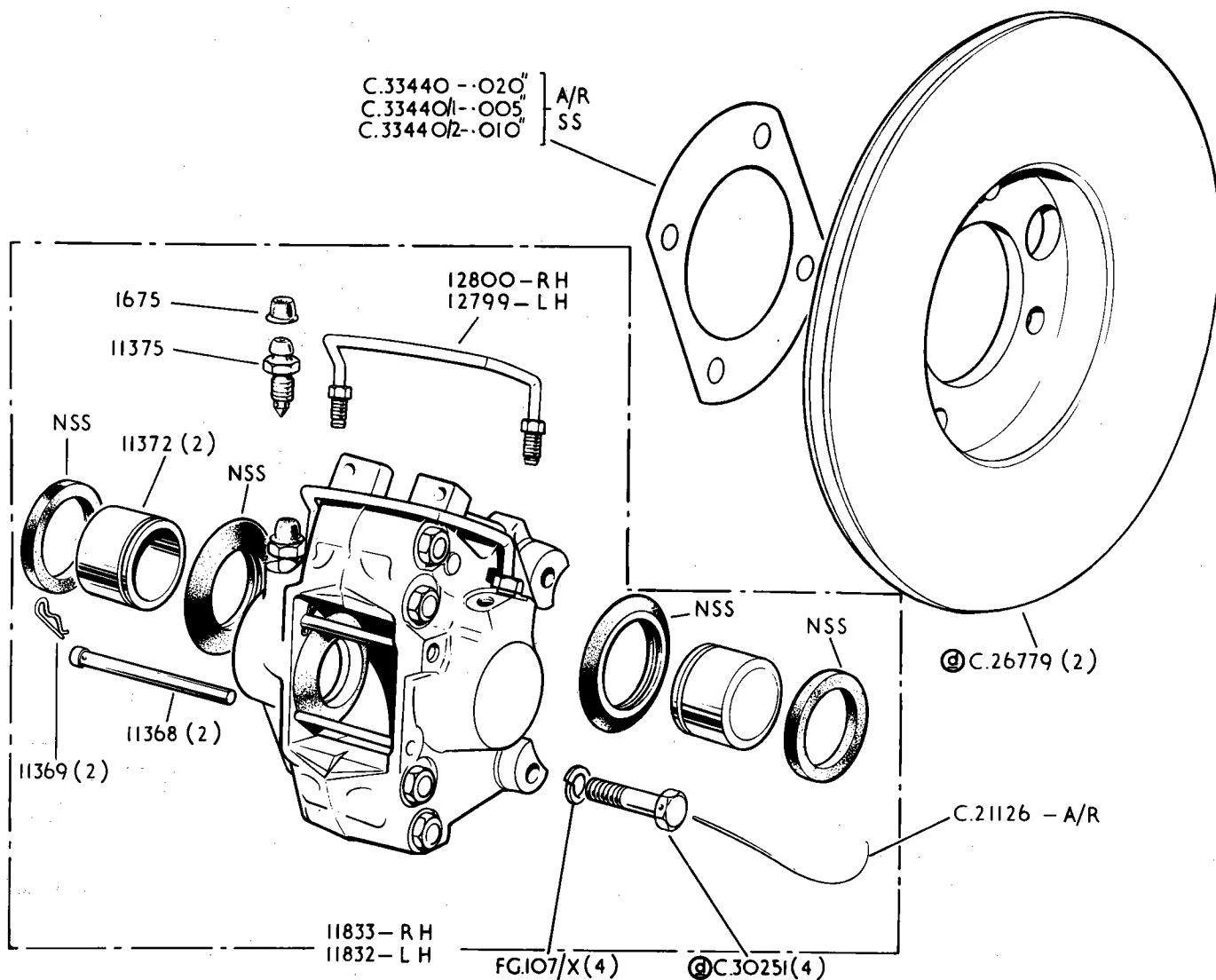
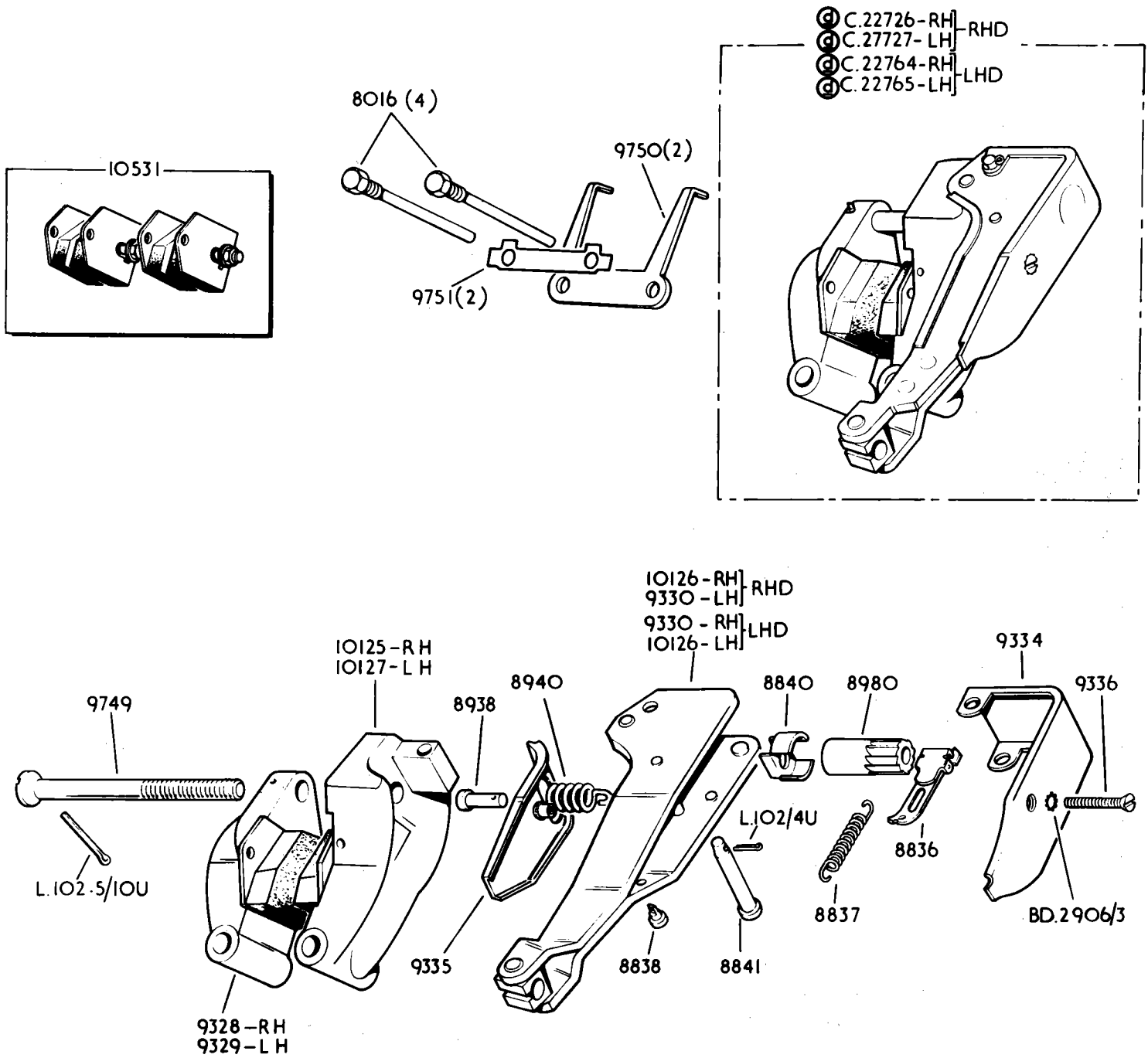
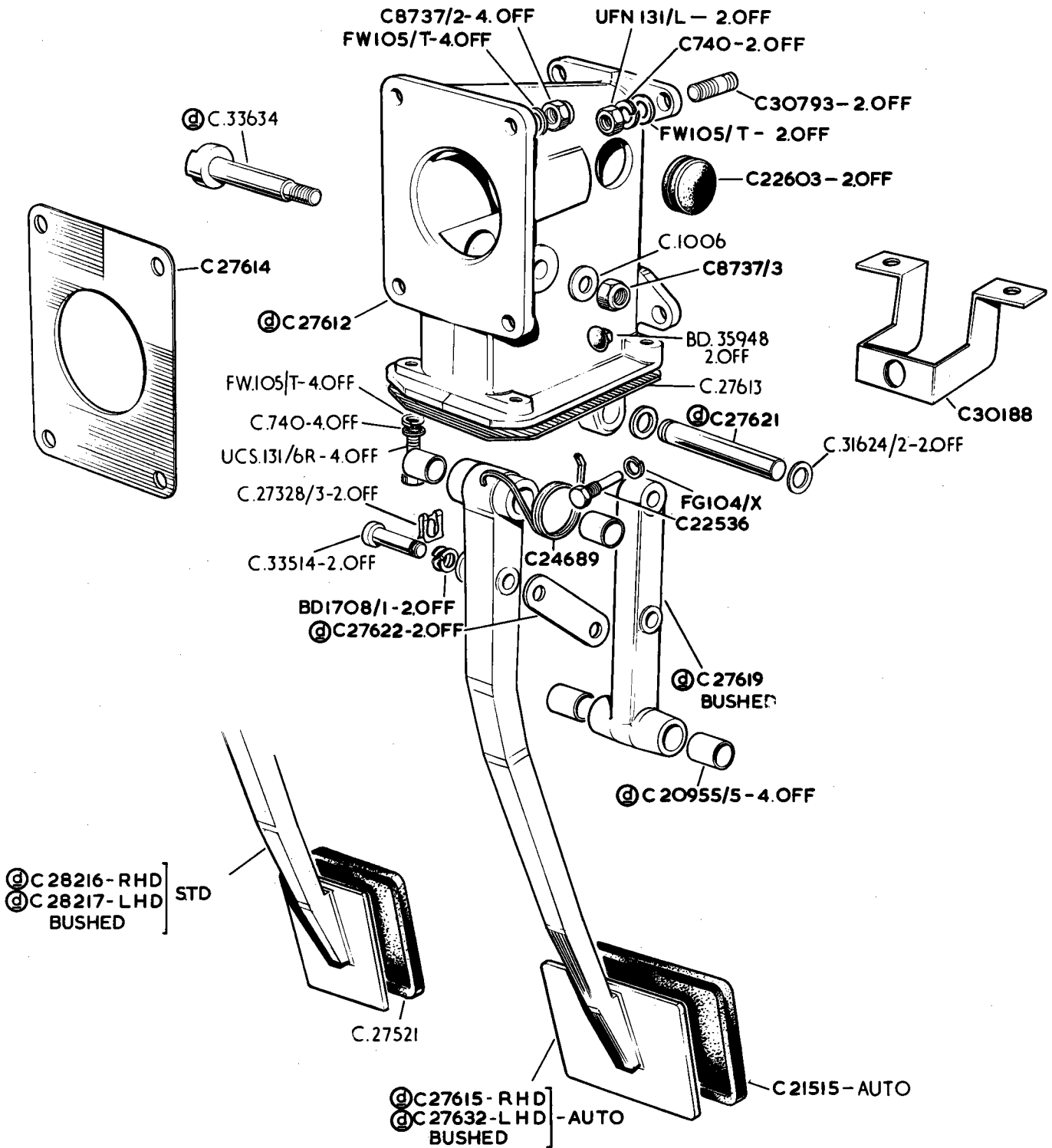
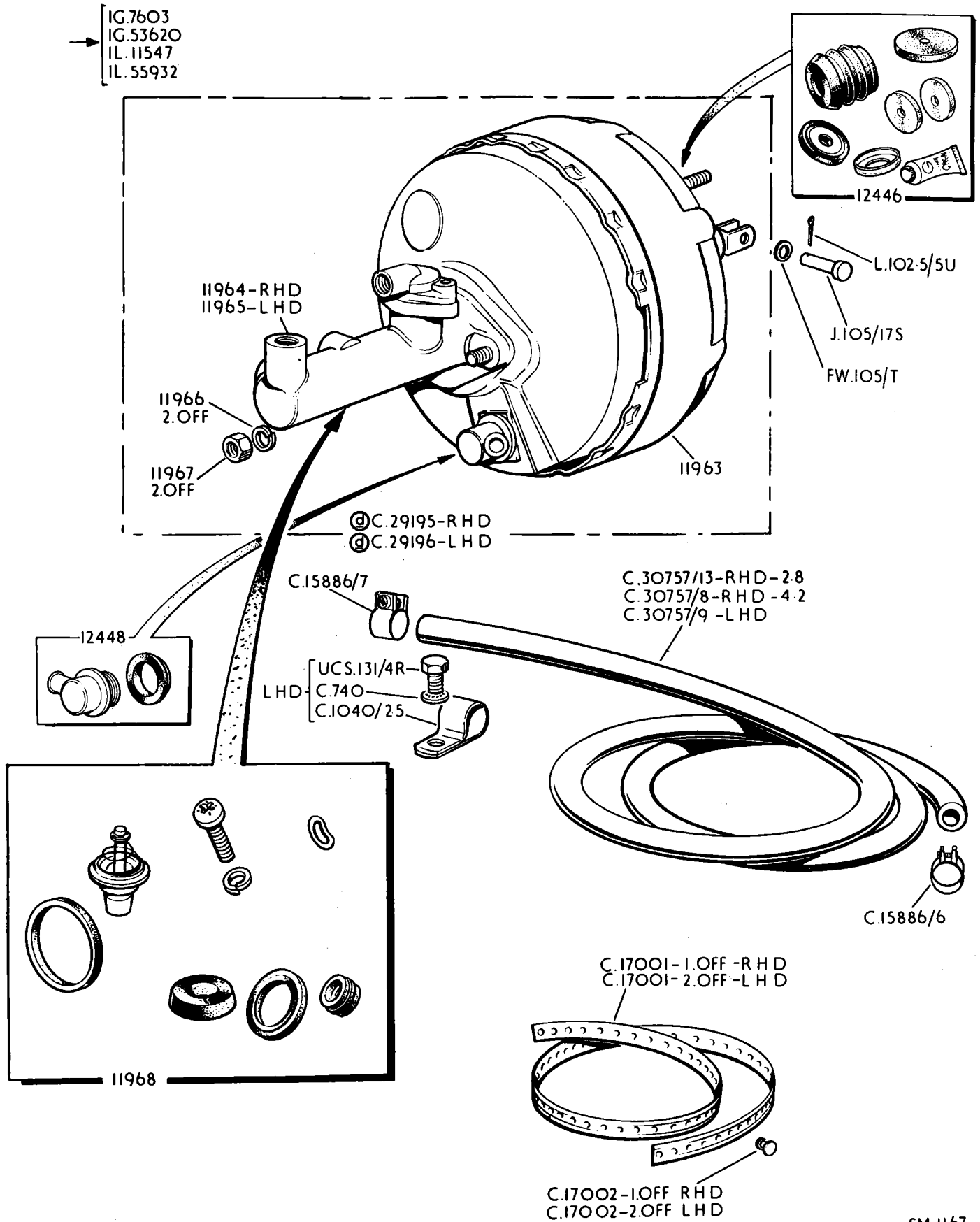


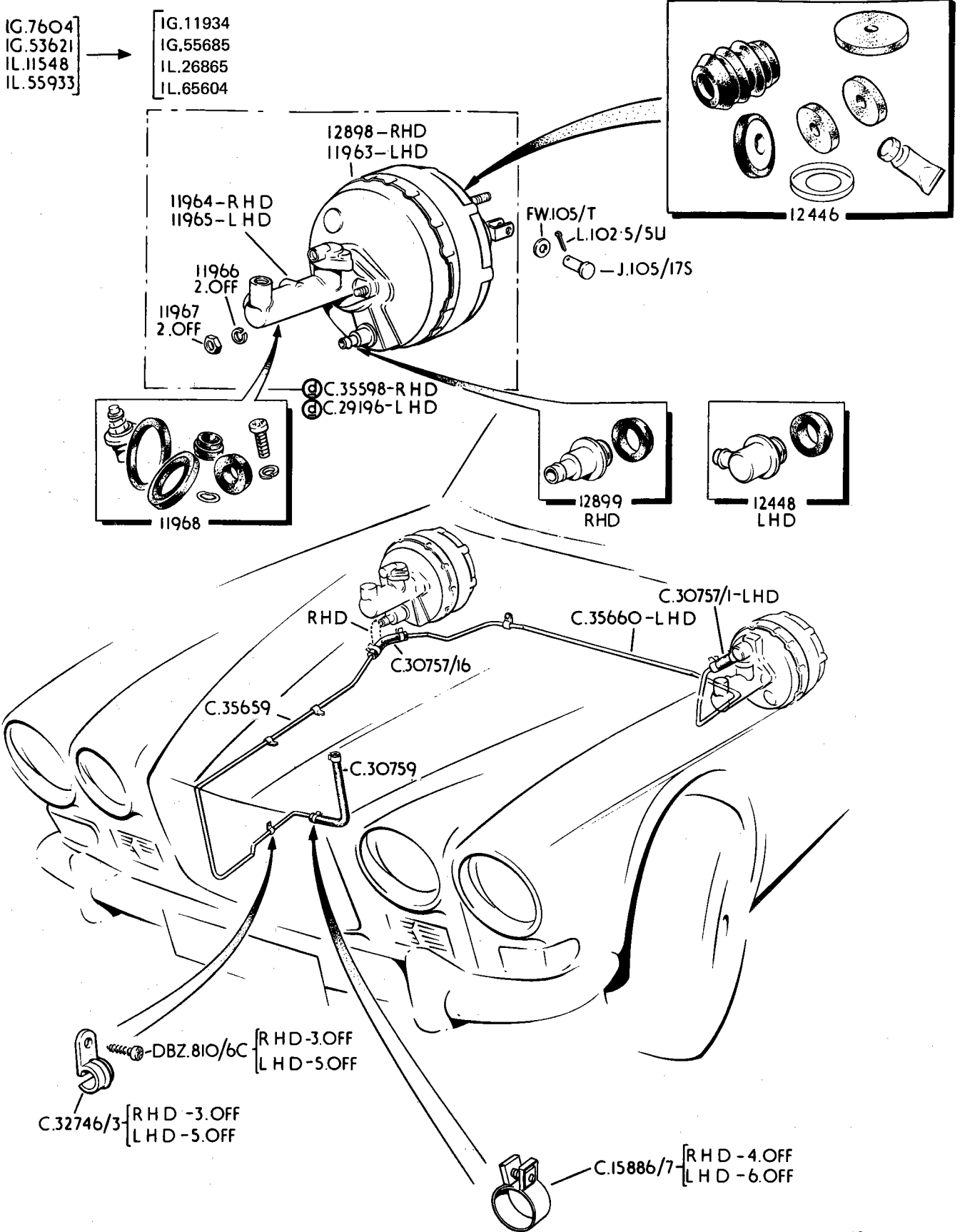
SM.1128



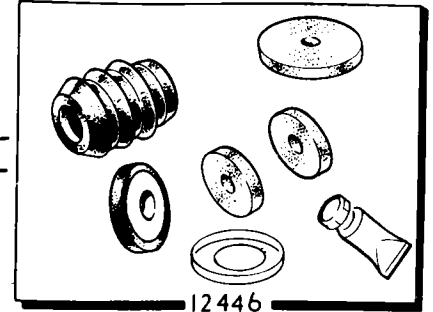








IG.11935
 IG.55686
 IL.26866
 IL.65605

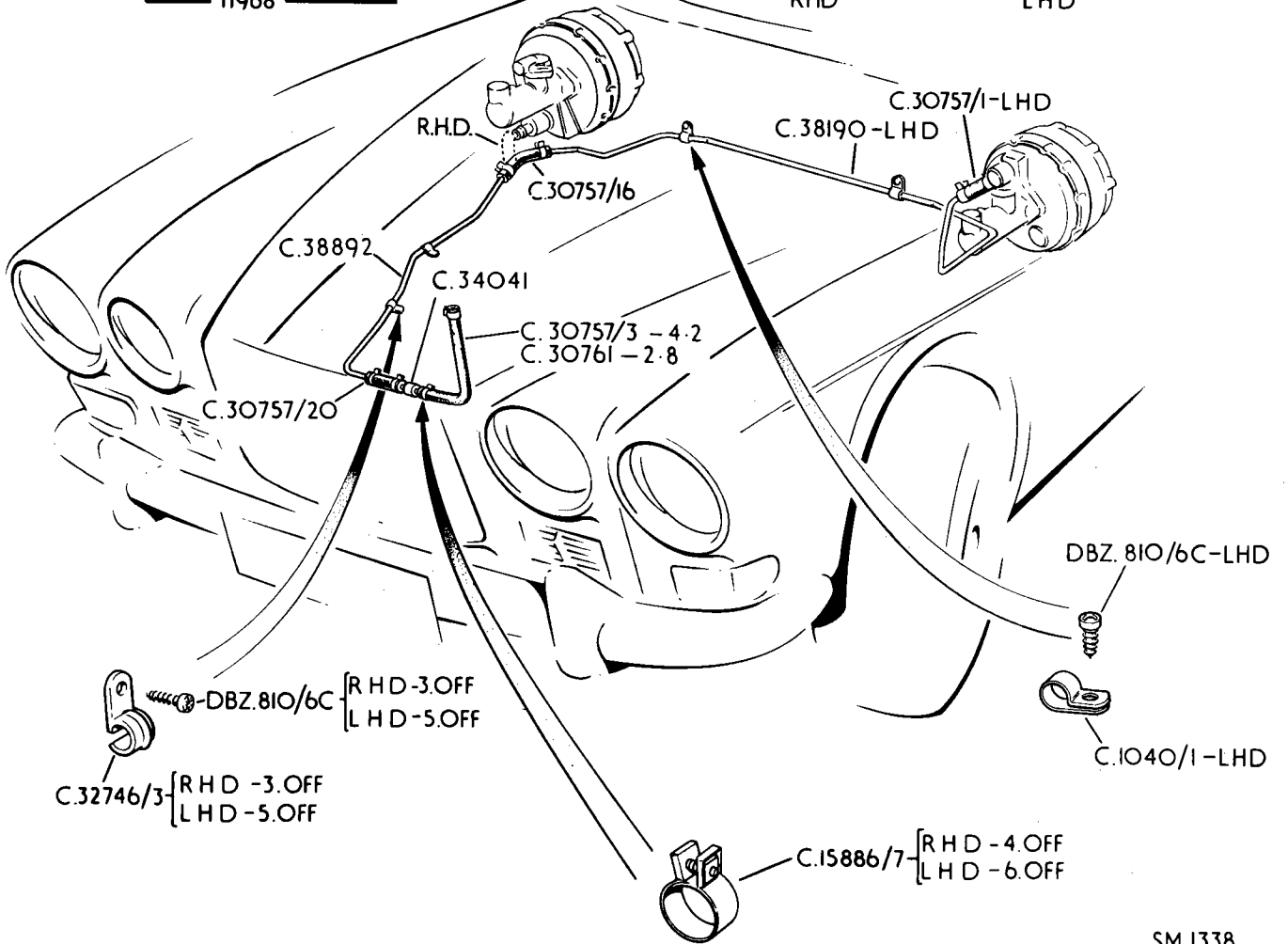
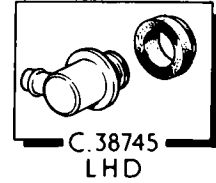
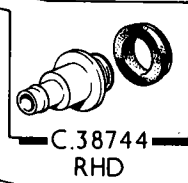
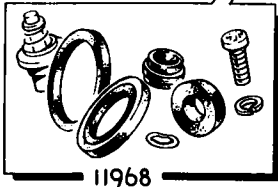


11964-RHD
 11965-LHD

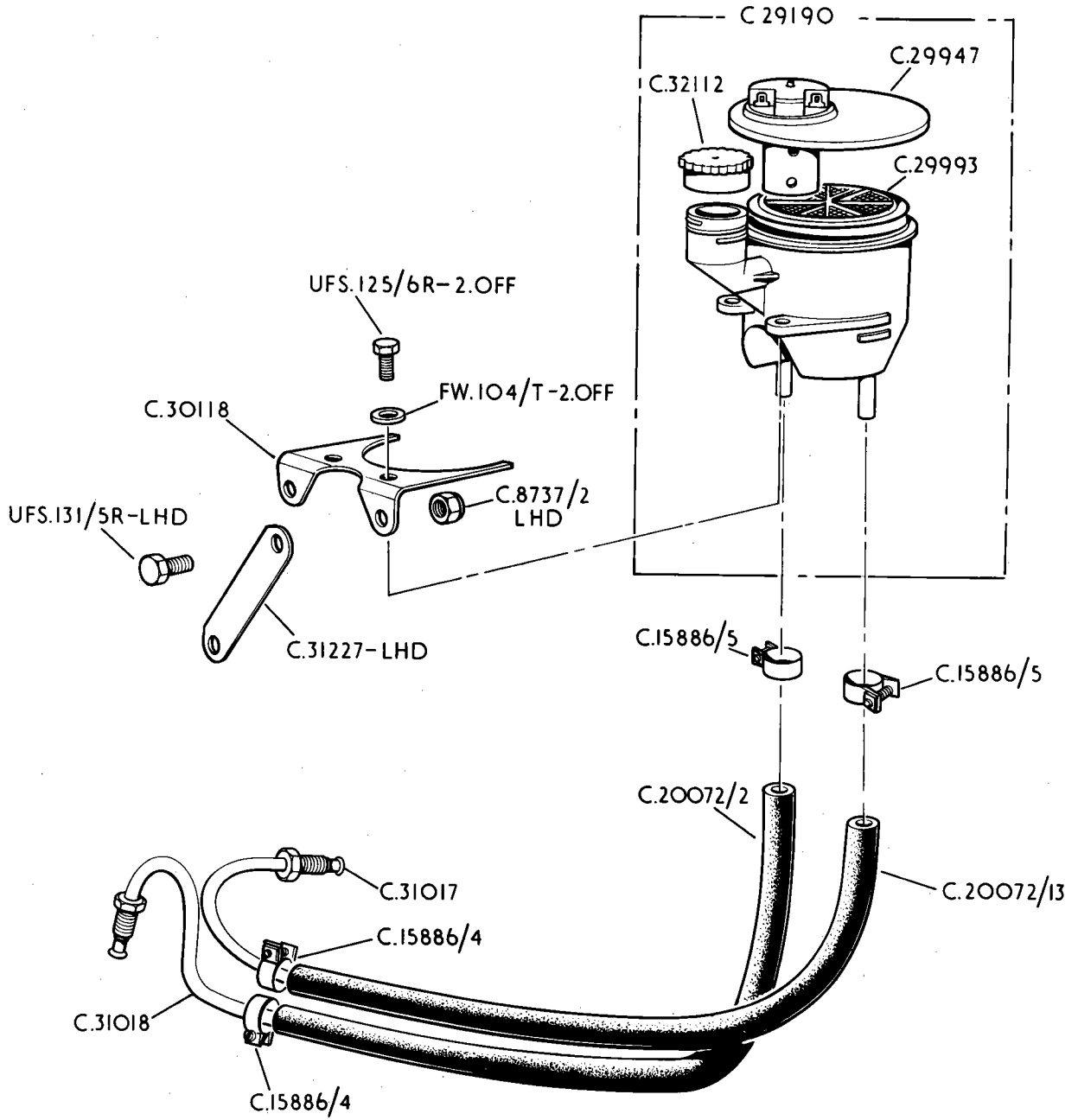
11966
 2.OFF
 11967
 2.OFF

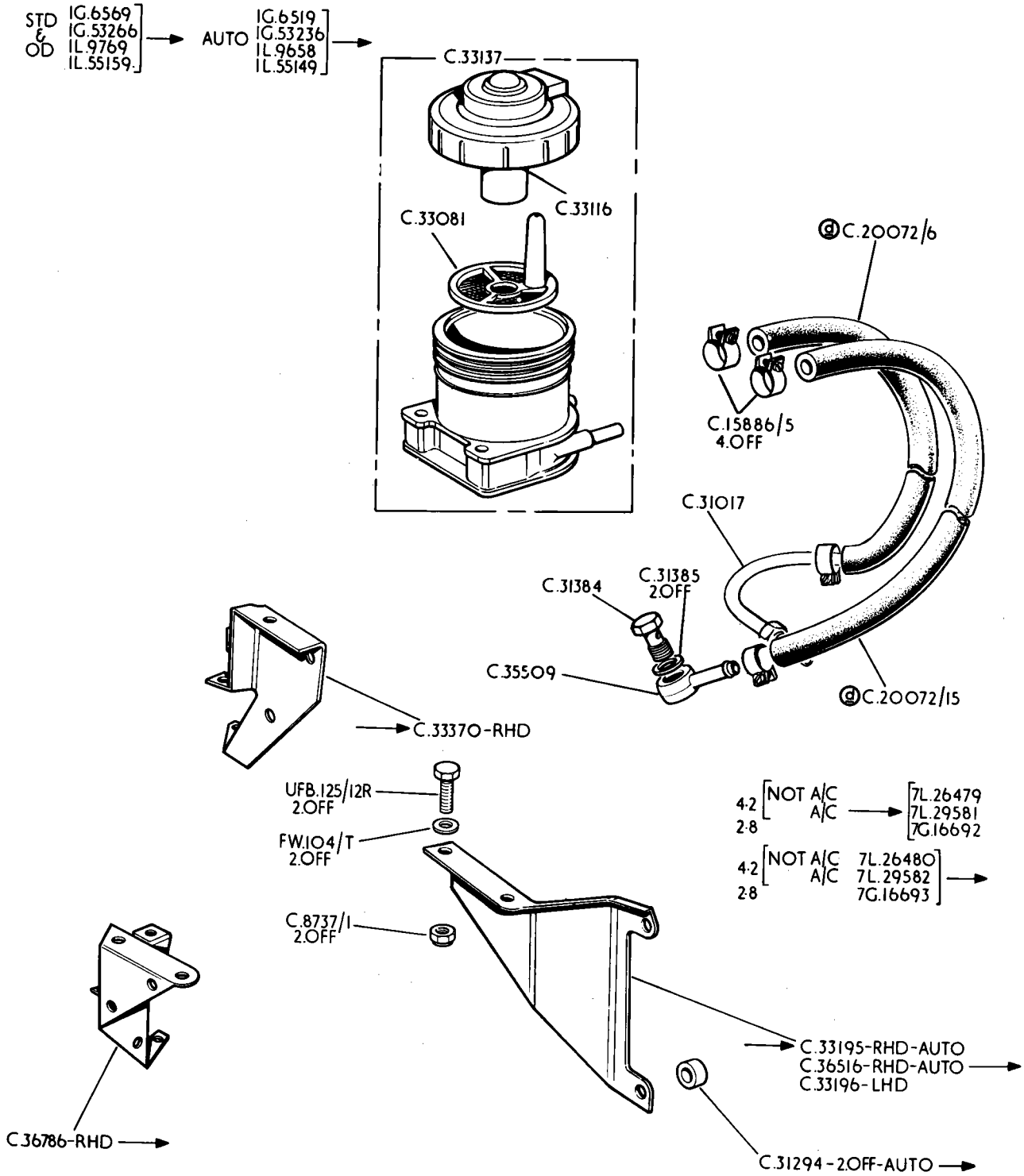
FW.105/T
 L.102.5/5U
 J.105/17S

JS.584-RHD
 JS.583-LHD

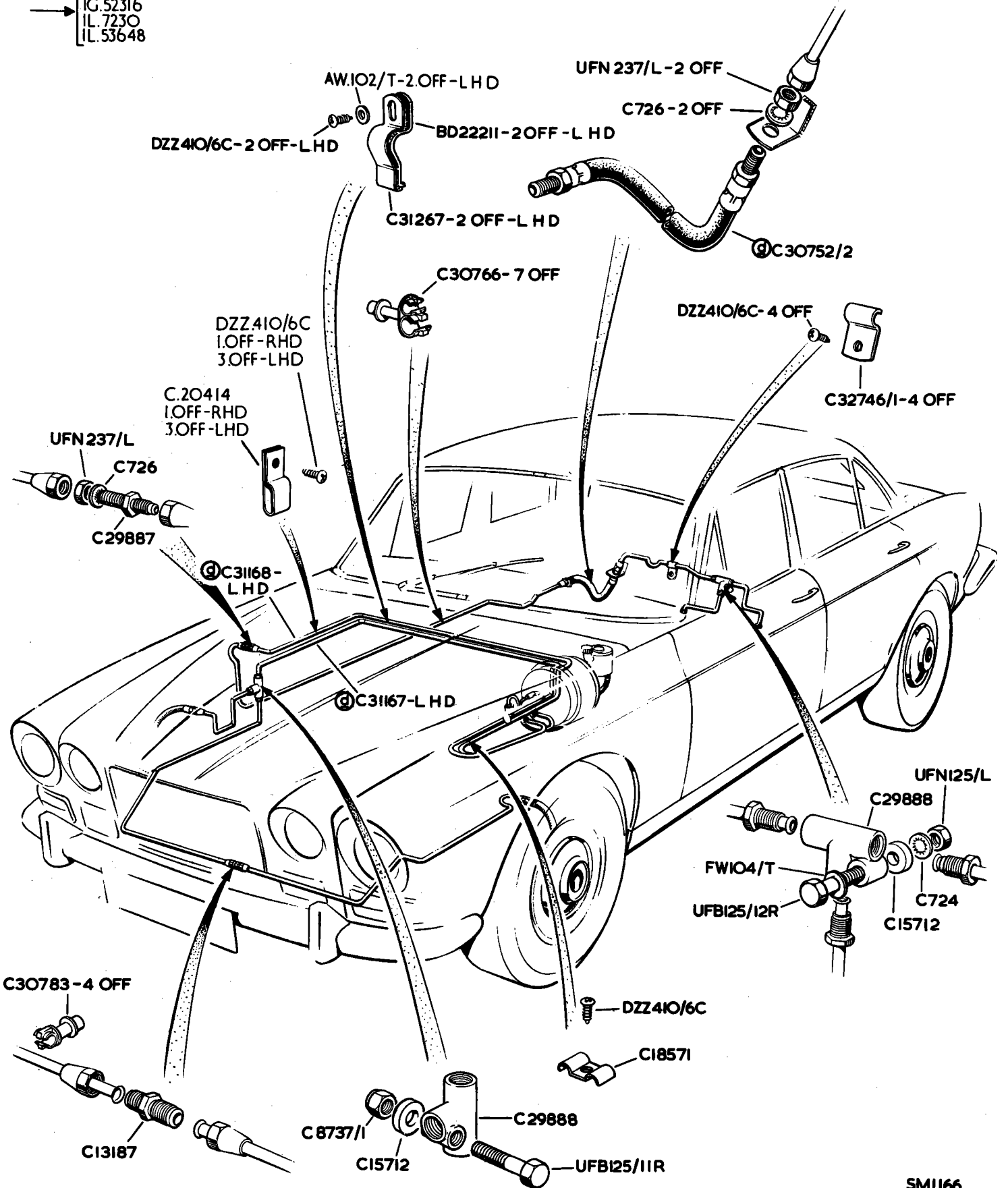


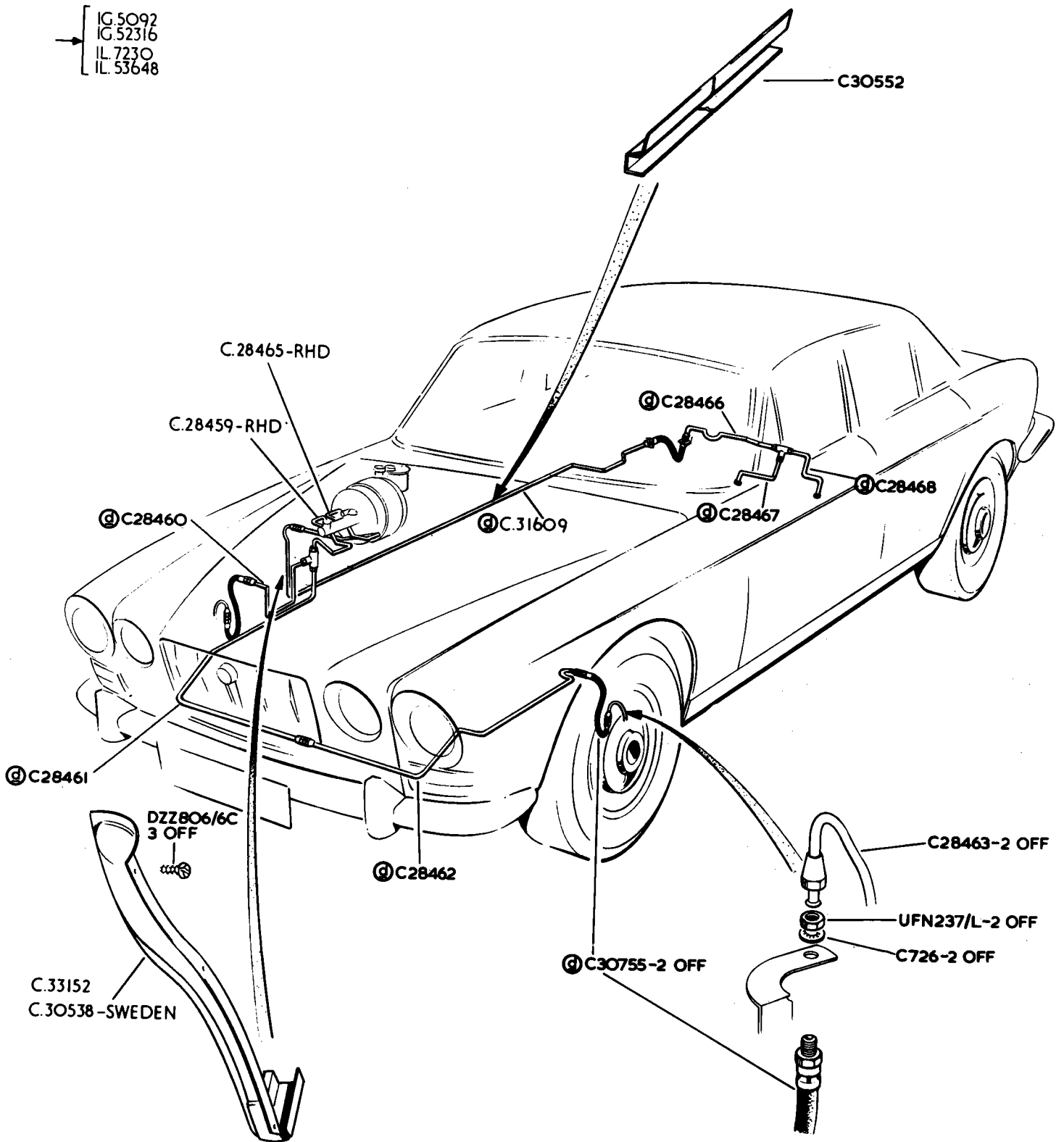
STD & O/D	→	[IG. 6568	→	AUTO	→]	IG. 6518
			IG. 53265					IG. 53235
			IL. 9768					IL. 9657
			IL. 55155					IL. 55148

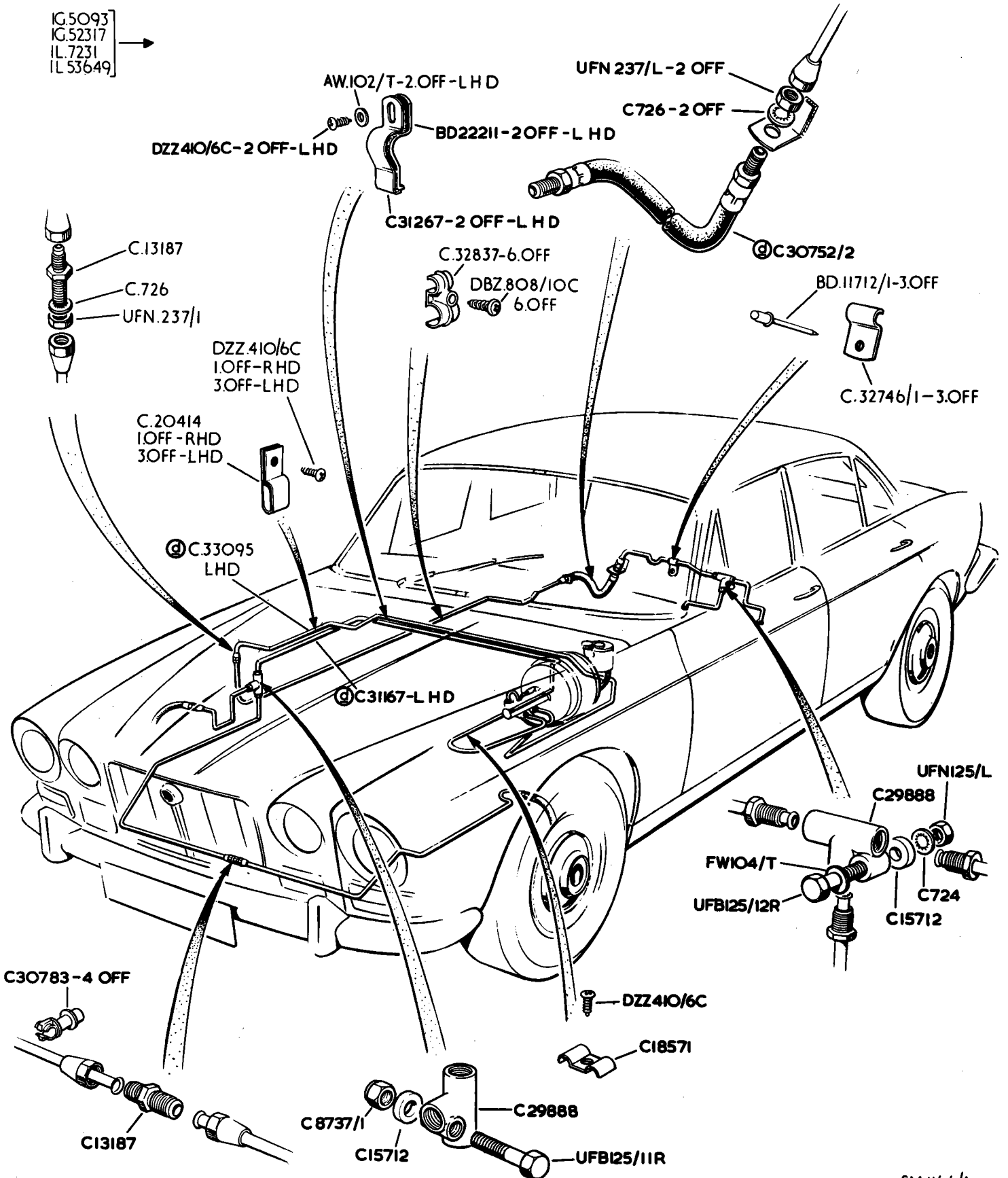




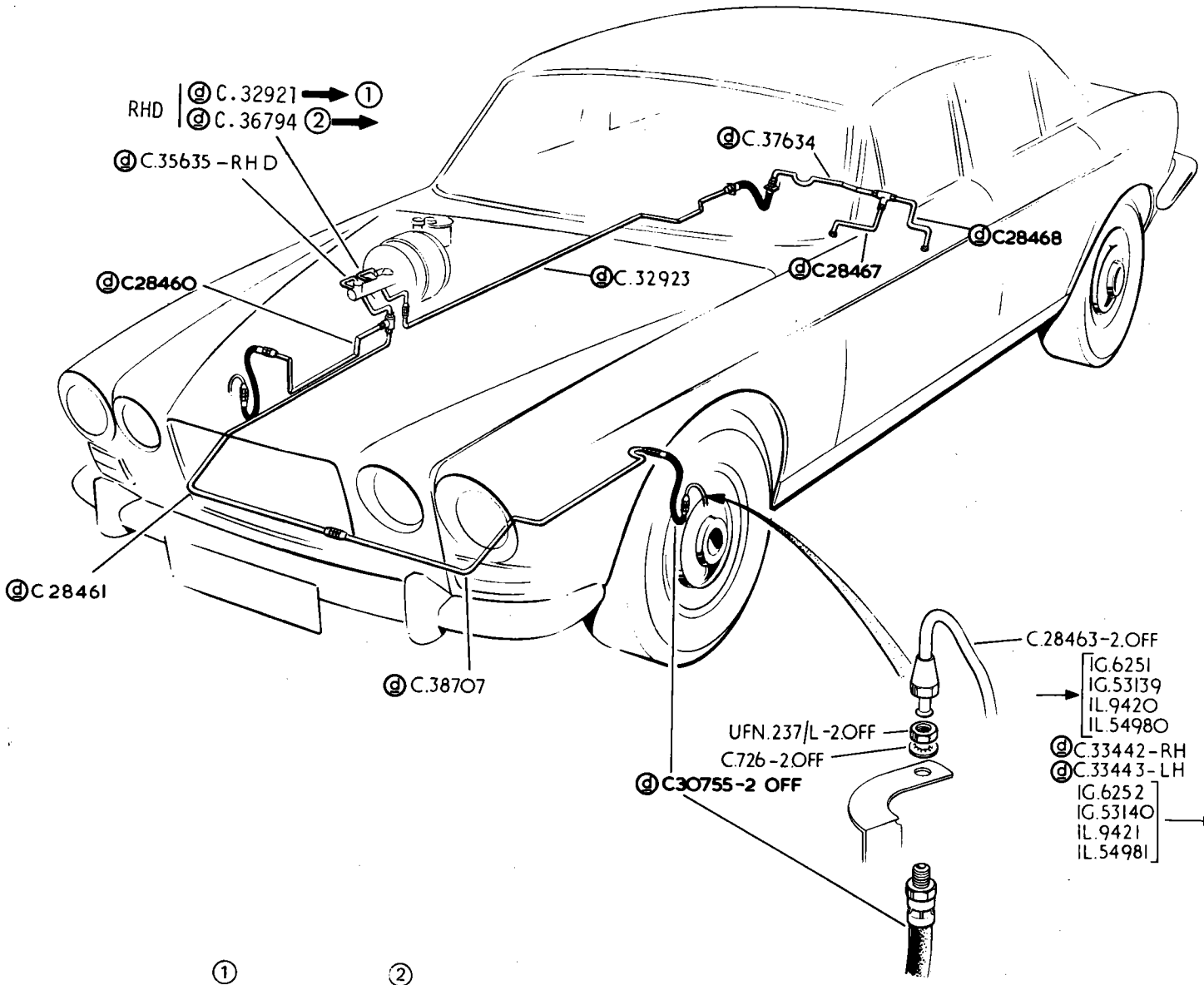
→ IG.5092
IG.52316
IL.7230
IL.53648







IG.5093
IG.52317
IL.7231
IL.53649



RHD | (C) C.32921 → ①
 (C) C.36794 → ②

(C) C.35635 - RHD

(C) C.28460

(C) C.28461

(C) C.38707

(C) C.37634

(C) C.28468

(C) C.32923

(C) C.28467

C.28463-2.OFF

UFN.237/L-2.OFF

C.726-2.OFF

(C) C.30755-2 OFF

IG.6251
IG.53139
IL.9420
IL.54980

(C) C.33442 - RH
(C) C.33443 - LH

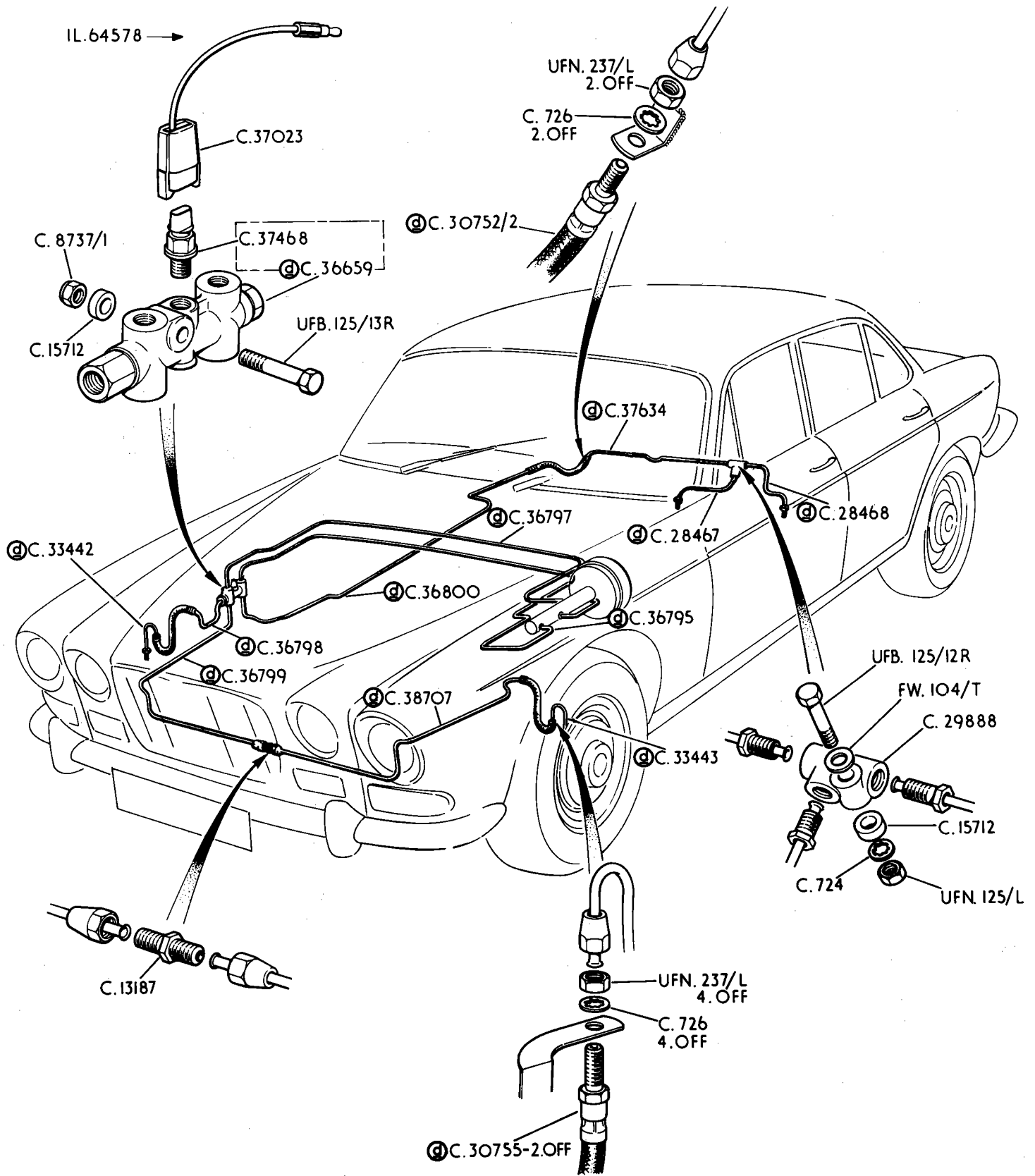
IG.6252
IG.53140
IL.9421
IL.54981

①

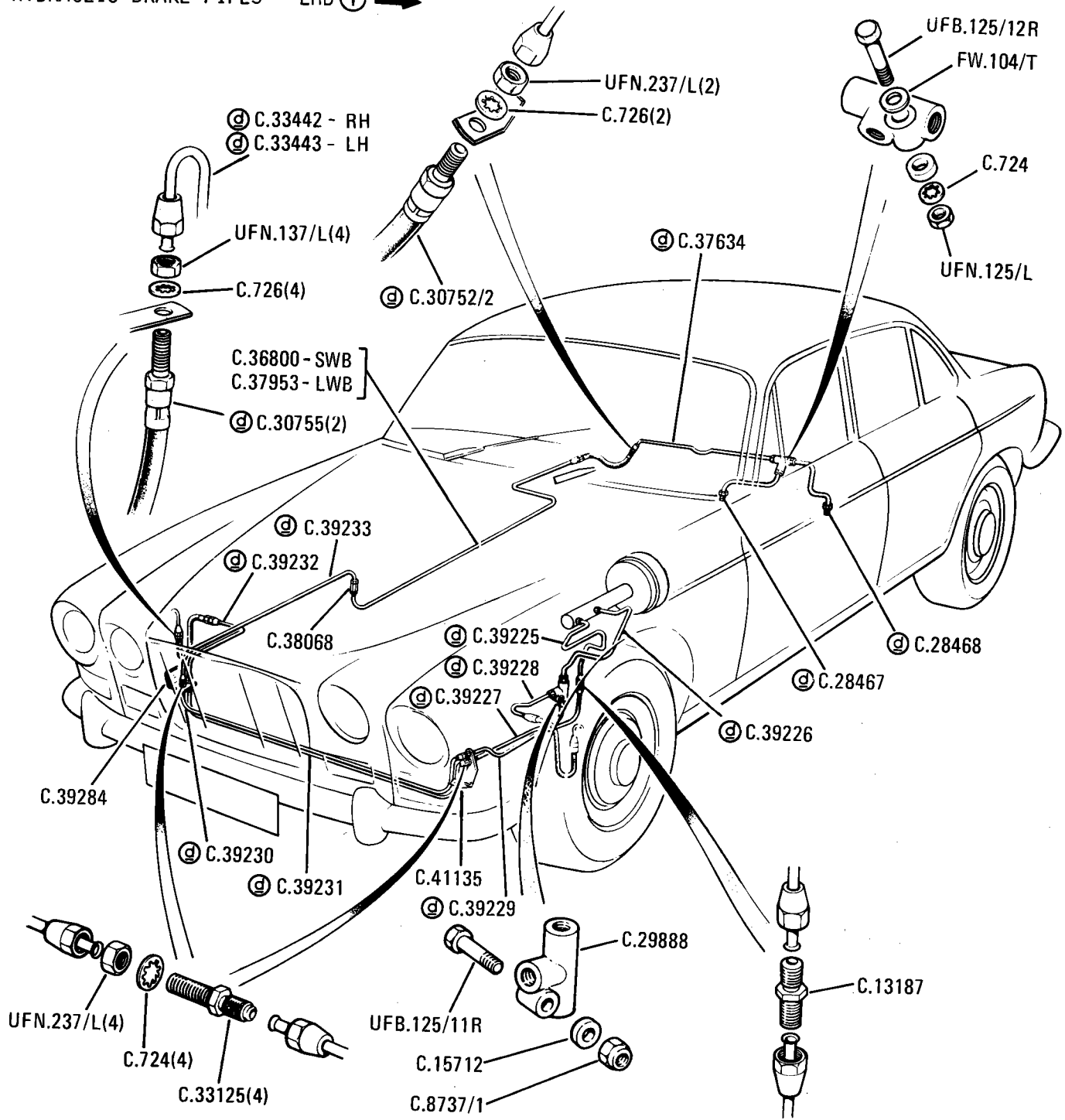
②

1G.13076
1G.55940
1L.29198
1L.69796

1G.13077
1G.55941
1L.29199
1L.69797



Jaguar XJ6 and Jaguar XJ6L
 HYDRAULIC BRAKE PIPES - LHD ① →

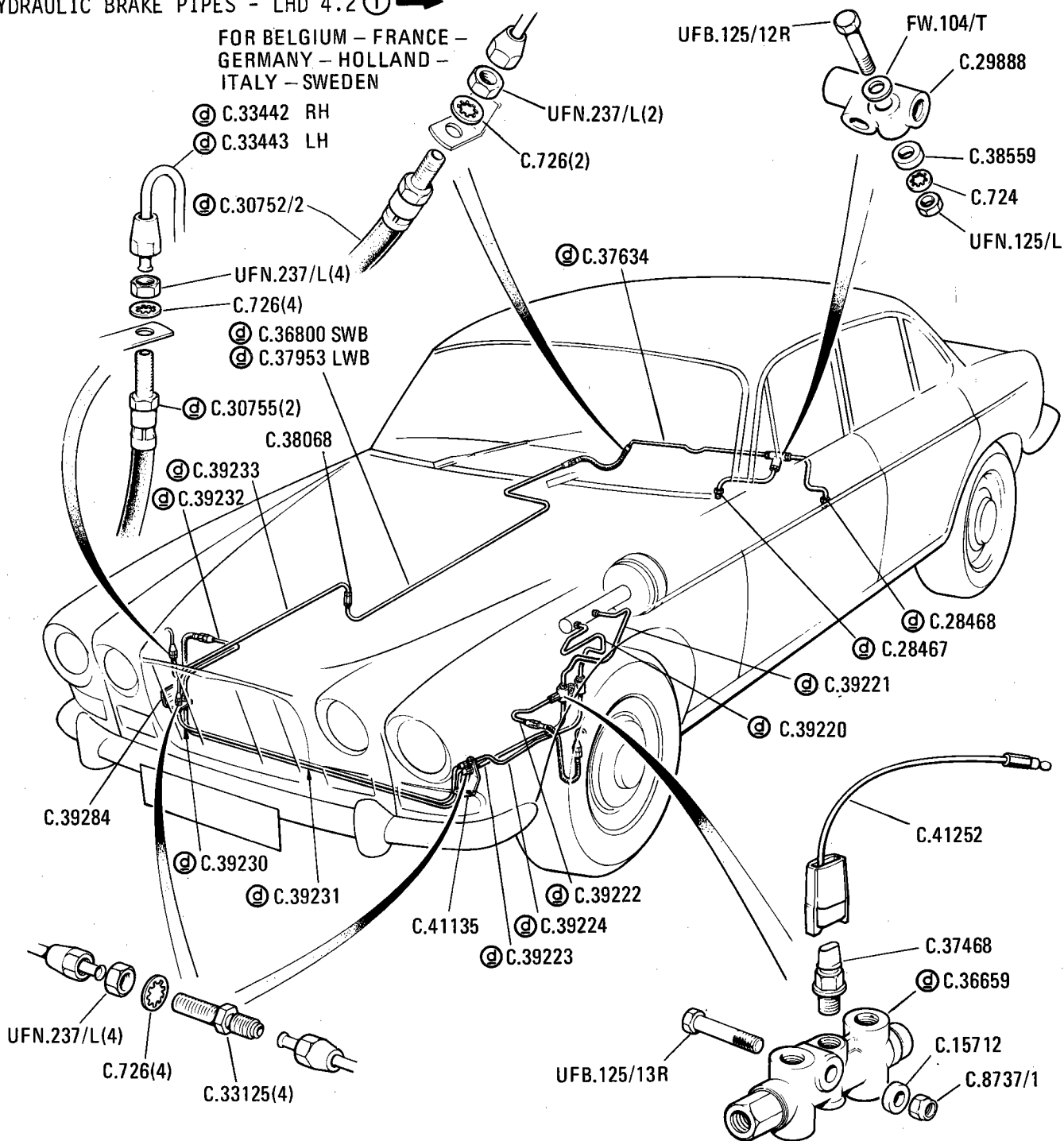


- ① 1G.56064
 1L.72826
 2E.50002



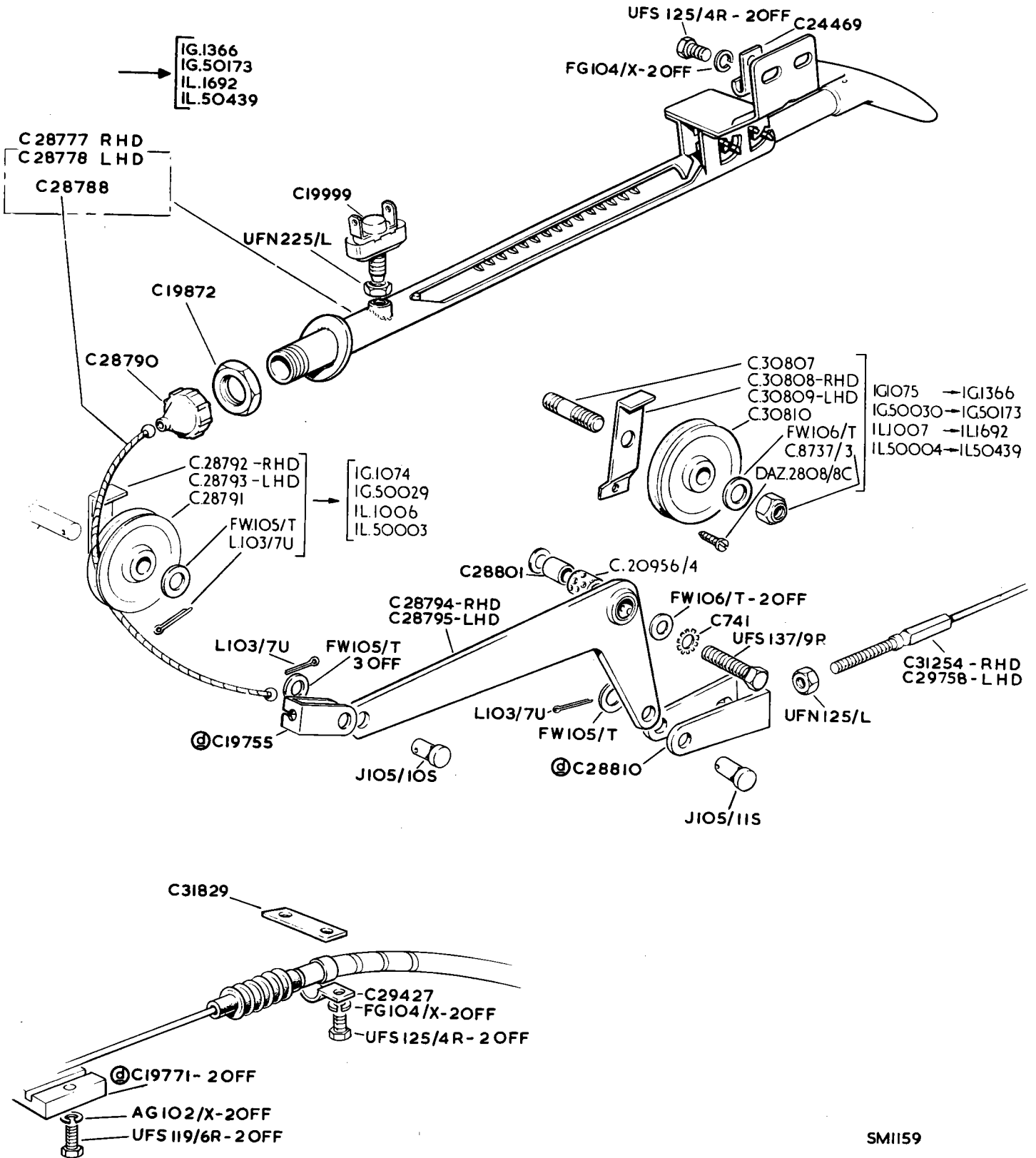
Jaguar XJ6 and Jaguar XJ6L
 HYDRAULIC BRAKE PIPES - LHD 4.2 ① →

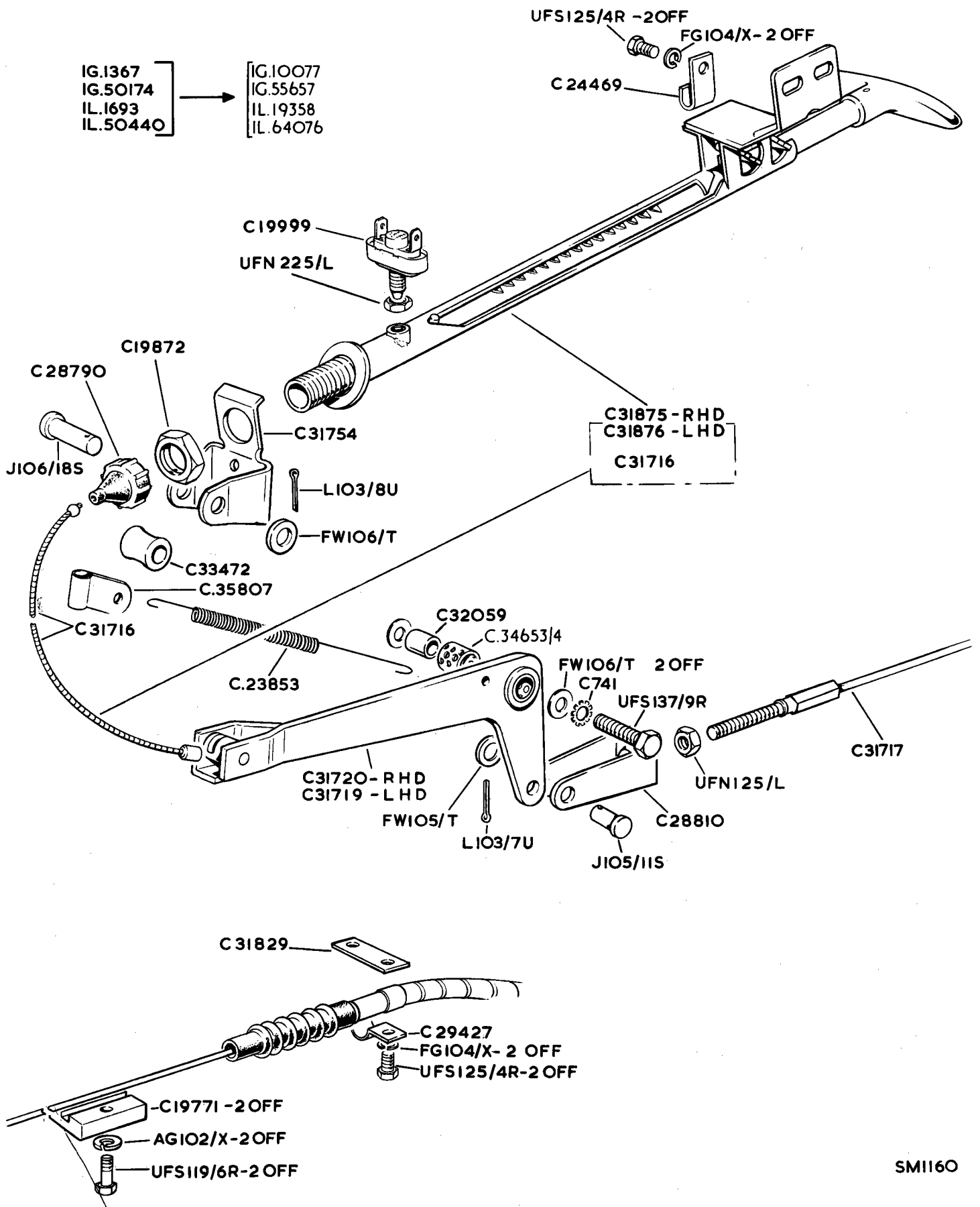
FOR BELGIUM - FRANCE -
 GERMANY - HOLLAND -
 ITALY - SWEDEN



① 1L.72826
 2E.50002

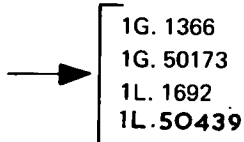






PLEASE NOTE:-

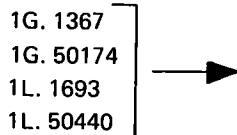
1ST TYPE



ALSO

1G. 1419:	1G. 1474:	1G. 1483:	1G. 1505:	1G. 1507:	1G. 1508:	1G. 1520:
1G. 50189:	1G. 50220:					
1L. 1849:	1L. 1930:	1L. 2028:	1L. 2053:	1L. 2071		
1L. 50530:	1L. 50531:	1L. 50688				

2ND TYPE



ALSO

1G. 1186:	1G. 1187:	1G. 1195:	1G. 1216:	1G. 1222:	1G. 1241:	1G. 1262:	1G. 1265	
1G. 1268:	1G. 1270:	1G. 1271:	1G. 1276:	1G. 1277:	1G. 1278:	1G. 1279:	1G. 1280	
1G. 1285:	1G. 1288:	1G. 1296:	1G. 1297:	1G. 1298:	1G. 1302:	1G. 1303:	1G. 1314	
1G. 1317:	1G. 1319:	1G. 1320:	1G. 1321:	1G. 1323:	1G. 1324:	1G. 1330:	1G. 1332	
1G. 1335:	1G. 1344:	1G. 1345:	1G. 1347:	1G. 1351:	1G. 1352:	1G. 1355:	1G. 1363	
1G. 50101:	1G. 50103:	1G. 50108:	1G. 50129:	1G. 50134				
1G. 50145:	1G. 50148:	1G. 50162:	1G. 50170:	1G. 50171:	1G. 50172			
1L. 1506:	1L. 1507:	1L. 1508:	1L. 1510:	1L. 1513:	1L. 1514:	1L. 1519:	1L. 1521:	1L. 1525
1L. 1527:	1L. 1529:	1L. 1534:	1L. 1535:	1L. 1537:	1L. 1571:	1L. 1584:	1L. 1605:	1L. 1628
1L. 1634:	1L. 1635:	1L. 1636:	1L. 1640:	1L. 1648:	1L. 1652:	1L. 1654:	1L. 1656:	1L. 1660:
1L. 1661:	1L. 1665:	1L. 1667:	1L. 1671:	1L. 1673:	1L. 1674:	1L. 1677:	1L. 1678:	1L. 1679
1L. 1680:	1L. 1681:	1L. 1685:	1L. 1686:	1L. 1687:	1L. 1688:	1L. 1689:	1L. 1690:	1L. 1691
1L. 50375:	1L. 50379:	1L. 50385:	1L. 50388:	1L. 50397:	1L. 50398:	1L. 50399		
1L. 50400:	1L. 50419:	1L. 50422:	1L. 50424:	1L. 50428:	1L. 50429:	1L. 50436		

