

Application

The 6500 Series Senior gauges are designed for use in low pressure tanks 0-25 psig [0-1,7Bar] containing diesel fuel, gasoline, fuel oil and lubricating oils.

Used in many applications such as construction equipment, stationary generators, boats, farm equipment and home heating.

General Information & Features

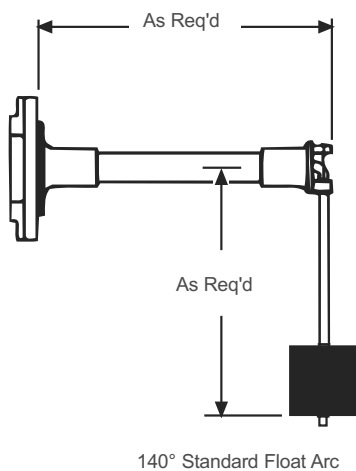
The 6500 Series Senior gauges are available in gear-action models for top, centerline or angle mounting. In lever-action models centerline mounting is only available.

The standard float is nitrile rubber. Aluminum or stainless steel floats are available at extra cost. The gauge is mounted to a mating Senior flange 2 1/2" bolt circle [63,5mm] using four 1/4"-28 x 3/16" long bolts. The gasket is Buna-N.

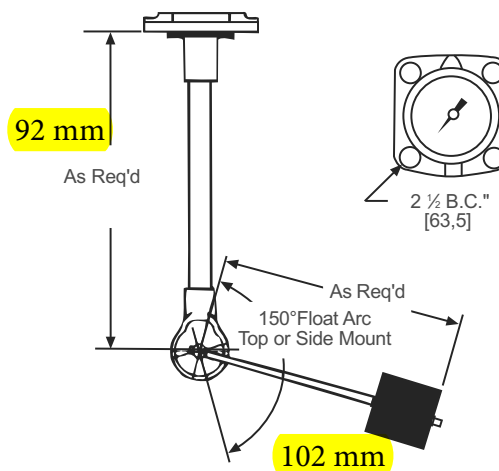


Model #	Action	Mounting	Dial, Sender or Switch Data
6540	Gear	Top	Senior TwinSite® Sender in choice of 0-30, 0-90, or 240-30 Ohm ranges. #5002S00062 direct-reading dials may also be used.
6543		C/L or Angle	
L6543	Lever	C/L	
6550	Gear	Top	Standard switch #5023S00778 S.P.S.T., 150 VAC/50 VDC 1/2 Amp. Please furnish tank drawings and switch points so proper gauge and calibration can be supplied. Other switches available, see DS-364.
6553		C/L or Angle	
L6553	Lever	C/L	
6560	Gear	Top	#5025S00570 Senior side-reading fractional
6580		C/L or Angle	#5002S00062 Senior direct-reading fractional
6583		C/L or Angle	#5002S00547 Senior direct-reading fractional
L6583	Lever	C/L	#5002S00547 Senior direct-reading fractional
6583-00093	Gear	Top	#5002S00062 direct-reading fractional

Lever Action Gauge



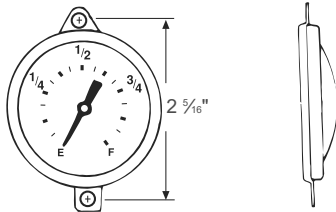
Gear Action Gauge



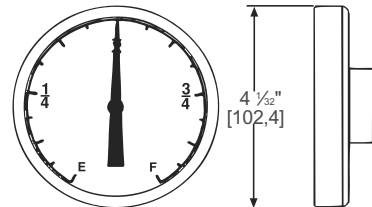
6500 Series

Magnetic Liquid-Level Gauges

5002S00062
Sr. Direct-Reading Dial

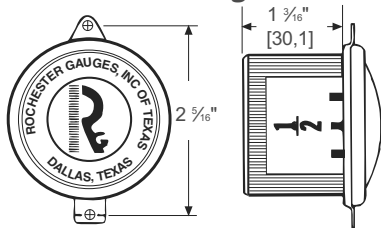


5013S00456
Standard 4" Dial

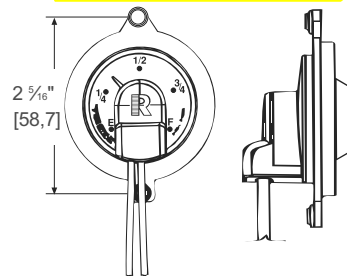


Note: This dial is used in conjunction with 93-2 mounting bracket and 39-2 bezel.

5025S00570
Sr. Side-Reading Dial



Sr. Twinsite® Sender 0 - 90 Ohm



General Specifications*

Accuracy

Accuracy depends upon proper gauge sizing. Senior dials $\pm 6\%$, TwinSite® dials $\pm 10\%$. Accuracy may be less depending upon tank shape. Accuracy may be less near full and empty. Accuracy may be less if tank is not level. This gauge is not to be used for filling. All accuracy estimates are expressed as a percent of full scale.

Temperature Range

-40°F to $+158^{\circ}\text{F}$, -40°C to 70°C .

Humidity

Paint exposed portions of gauge, less dial, for marine applications.

Shock & Vibration

Suitable for mobile applications.

Power

0.5 watts maximum for TwinSite® versions.

Tank Pressure

Up to 25 psig [1,7Bar]

Approvals

These direct indicating gauges are UL listed for flammable liquids. Some models UL recognized for marine service.

Note: For installation instructions see MS-501/502 (mounting standard).

Materials of Construction*

Head

Die cast aluminum

Centershaft, Support Tube & Float Rod

Tempered aluminum

Gears, Cross Stud & Bearings

Stainless steel

Drive Magnet

Alnico

Gear Housing

Acetal plastic or aluminum

Float

Nitrile rubber

Gasket

Buna-N, 0015-00004 or 0015-00079

Direct Reading Dial

Aluminum with acrylic crystal, hermetically sealed.

Side Reading Dial

Aluminum with polycarbonate crystal, hermetically sealed.

TwinSite® Sender

Polyamide.

Mounting Bolts

Zinc-plated steel $\frac{1}{4}$ "-28 x $\frac{9}{16}$ " long.

When ordering, specify:

1. Gauge model number.
2. Tank diameter and riser height.
3. Mounting location.
4. Ohm range on TwinSite® versions.
5. Preferred switch on switch gauges, if other than standard.
6. Any listed options or preferences.

* Materials and specifications are subject to change without notice.
Pressure ratings subject to change due to temperature and other environmental considerations.