

### Current Pro Race Engine Data

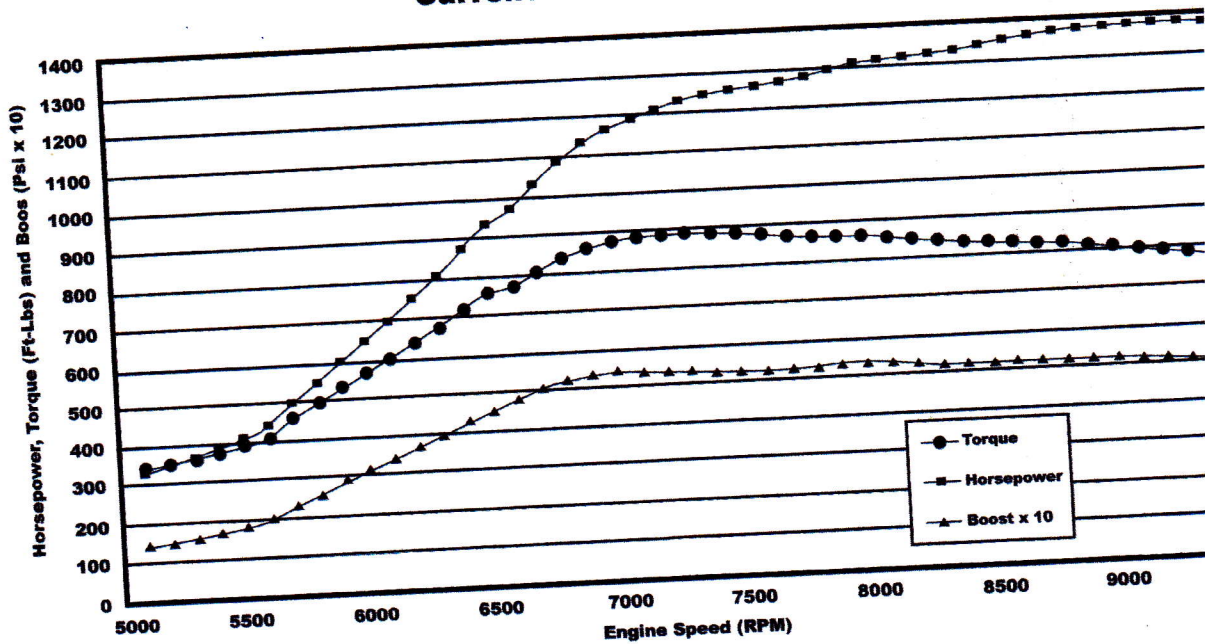


Fig. 161

### ENGINE BLOCK

GM racing along with Bates Engineering developed a 3.500" Bore Race prepped ECOTEC block. This block has all the features of the 3.400" bore race block plus the following:

- 3.500" Bore size
- 3.835 I.D. and 3.915 O.D. one piece stainless O-ring.
- The increased bore size increases air flow capabilities of the cylinder head. It also increases engine displacement from 127.2c.u.in. (2.0L) to 134.8c.u.in. (2.2L)

### OIL PAN

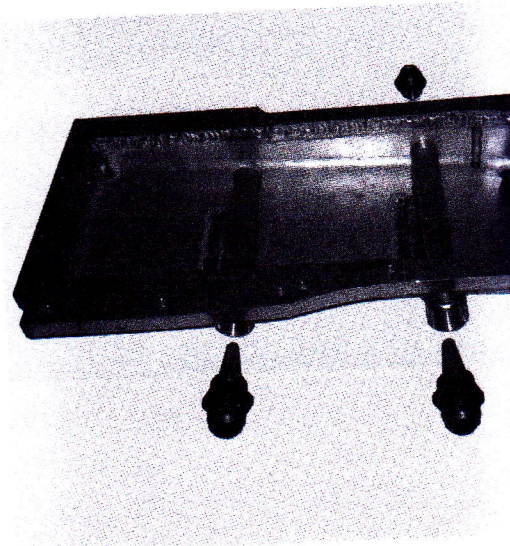


Fig. 162

There are three oil scavenging lines incorporated into this aluminum fabricated oil pan on the dry sump application. Aftermarket dry and wet sump oil pans are available from Bates Engineering for your specific application. In a dry sump application, a minimum of three scavenging lines are required. In applications where a high engine speed is used, a head (valve area oil drain) scavenging line is recommended. (Fig. 162)