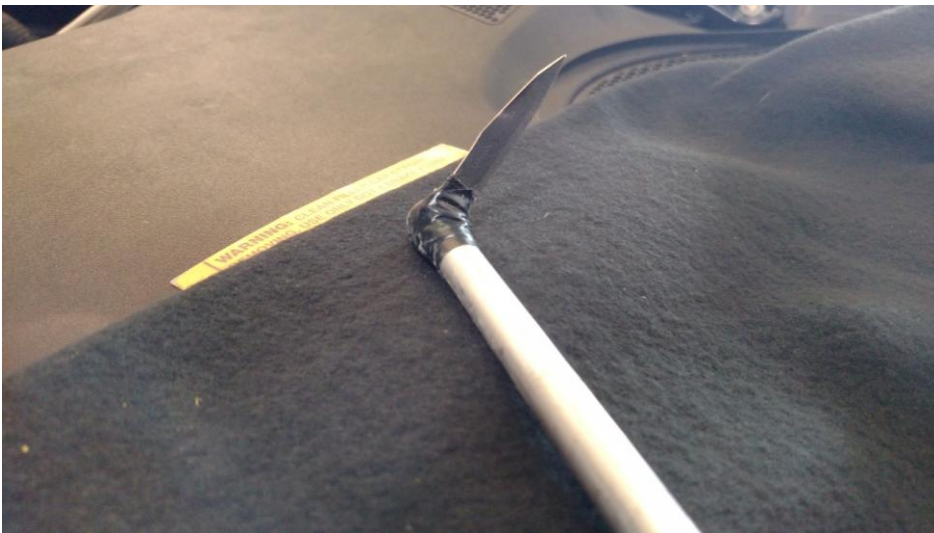




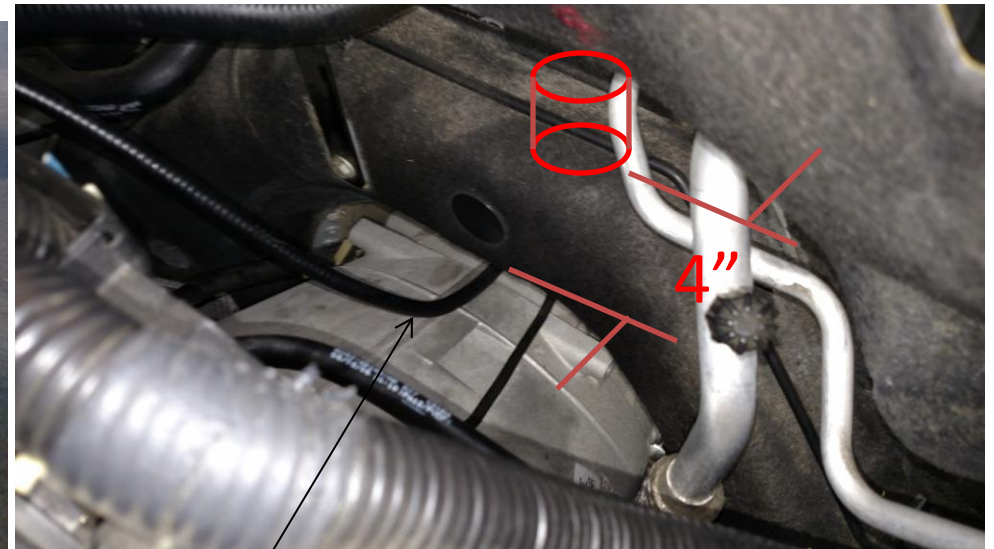
Used tapping method to get dripping but wouldn't last very long. Would switch to econ mode when I would see water in the foot well.



Tools I used; didn't use razor blade just for ref, made knife from a razor blade. Picked up inspection camera from home depot for \$79.00 to locate duck bill.



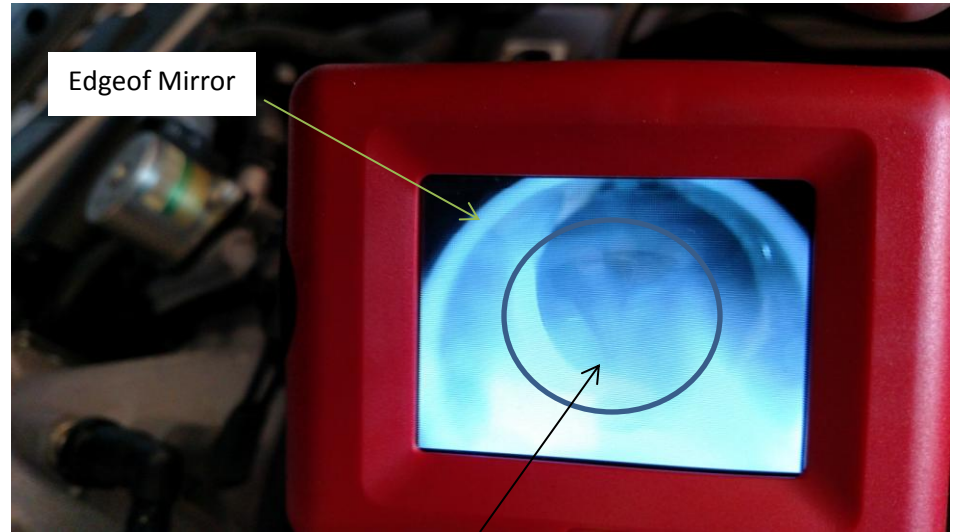
Picture of knife I made from razor blade and inserted into 3/8" Diameter x 10" long aluminum rod. Made slot in bar to accept blade and taped in position. I'm sure you could use a wood dowel for shaft.



Camera Arm Position, duck bill is in center about 4" back from edge. It's not visible as it is up in housing. Blade sticks out 1.625" but 2" would be better. Just didn't have a longer blade at the time.



View from camera where water is dropping on transmission.



View from camera with mirror attachment to look up into hole. If you can tell, duck bill is stuck closed.



View from camera with mirror attached to look up into hole. After using blade to pry open you can see duck bill is open. Goal was to cut off one half of duck bill but need longer blade to reach. Was able to cut the lower half.