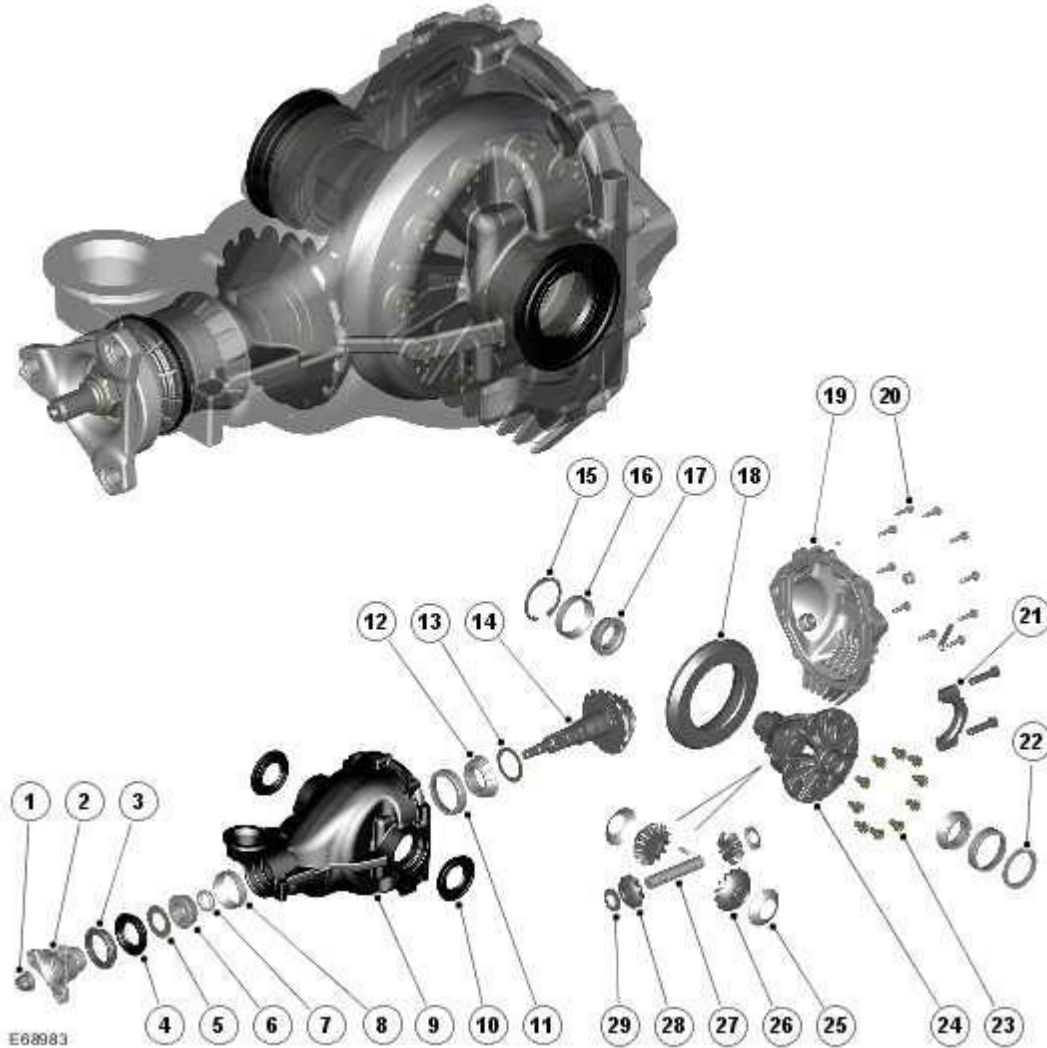


The unit has a final drive ratio of 3.31:1 and the lubricant is fill for life.

**CAUTION: Running-in For Final Drive Unit During the first 1500 km (940 miles) and if at any time a new final drive unit is fitted:**

- avoid full throttle applications
- do not exceed 190 km/h (120 mph)
- do not participate in motor racing events, test track days, sports driving schools or similar
- avoid towing during running-in period.

## OPERATION



- |   |   |
|---|---|
| 1 Pinion nut                            | 16 Differential bearing cup             |
| 2 Pinion flange                         | 17 Differential pilot bearing           |
| 3 Dust shield                           | 18 Ring gear                            |
| 4 Pinion oil seal                       | 19 Differential rear cover              |
| 5 Pinion shaft oil slinger              | 20 Rear cover bolt (10 off)             |
| 6 Pinion bearing                        | 21 Differential bearing cap             |
| 7 Collapsible spacer                    | 22 Differential bearing adjustment shim |
| 8 Pinion bearing cup                    | 23 Ring gear bolt (10 off)              |
| 9 Differential housing                  | 24 Differential                         |
| 10 LH Output shaft oil seal             | 25 Dished plate                         |
| 11 Differential pinion bearing cup      | 26 Sunwheel                             |
| 12 Pinion bearing                       | 27 Shaft                                |
| 13 Drive pinion bearing adjustment shim | 28 Planet gear                          |
| 14 Pinion                               | 29 Thrust washer                        |
| 15 Circlip                              |   |