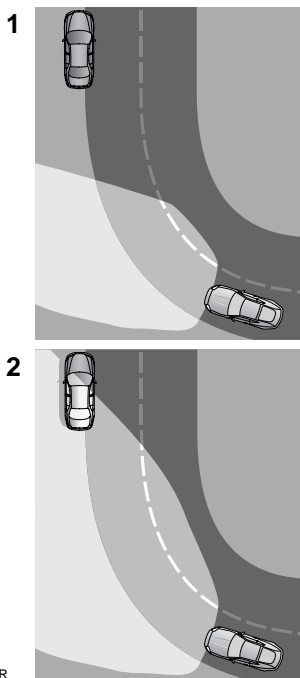


Lighting

GENERAL INFORMATION

Active front lighting system (AFL)

Active Front Lighting (AFL) is designed to give the driver improved visibility under varying driving conditions.



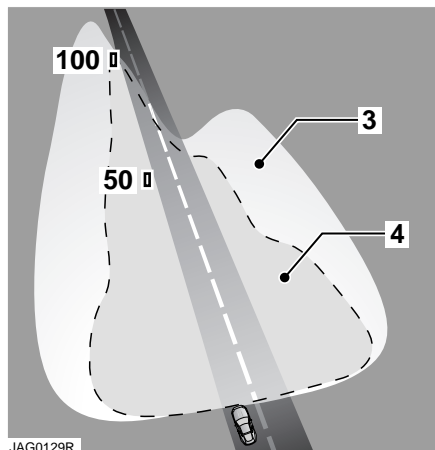
JAG0127R

The illustration shows the light spread of a vehicle NOT FITTED with AFL **1** and a vehicle FITTED with AFL **2**.

The main light source consists of bi-functional (high and low beam) xenon projector units.

The projector units are swivelled left or right to improve the light spread on bends in the road.

Bi-Xenon lamps **3** provide significantly improved visibility over halogen lamps **4**.



They also react dynamically in the vertical plane to the vehicle's braking or acceleration to maximise headlamp performance.

The units operate when the engine is running and the master lighting switch set to headlamps, see page 45, or **AUTO**, if the ambient light has fallen below a preset level.

The system takes inputs from the vehicle's road speed, steering angle to determine the amount of horizontal swivel. The amount of swivel is highest at low speed, manoeuvring speeds and reduces as speed increases.

If reverse gear is selected, the lights return to the central position and the swivelling capability is disabled.

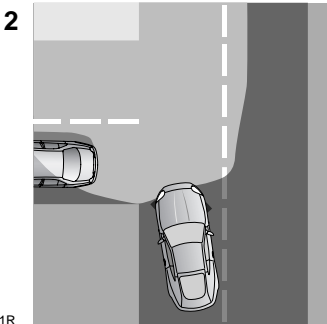
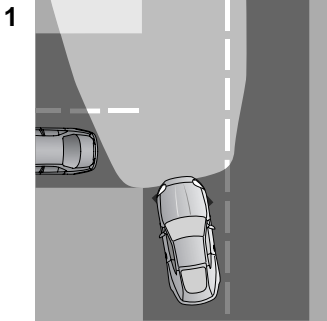
When the engine is started, the headlamps can be seen to swivel as they initiate a self-calibration cycle for a few seconds.

Lighting

Cornering or static bending lamps

Additional lighting comes from the cornering or static bending lamps which are angled outwards from the centre line of the vehicle.

These lamps broaden the beam of the headlamps when cornering during normal night driving.



JAG0131R

The illustration shows the light spread of a vehicle NOT FITTED **1** with static bending lamps and a vehicle FITTED **2** with static bending lamps.

The system switches on the lamp if it has received an input from the vehicle's direction indicator. As the system is ignition based, the lamp will not stay on even if the vehicle is parked with the direction indicator lever in the operating position.

Only the lamp on the same side as the operating direction indicator illuminates.

Note: Excessive rotation of the steering wheel while the ignition system is in the OFF position may cause incorrect calibration of the static bending lamps. In extreme situations the lamps may operate earlier than previously experienced. However, correct calibration of the lamps is automatically re-established within 30 seconds of the vehicle being driven.

Lighting

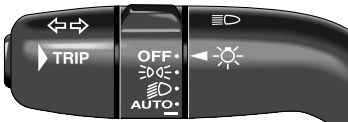
LIGHTING CONTROL

Note: If the ignition system is OFF and the lamps are left ON, the message centre will display **LIGHTS ON**.

The exterior lamps are controlled by the left-hand column stalk switch.

The rotary collar on the stalk has three positions for turning the exterior lamps on or off and positions for autolamps and exit delay. These are:

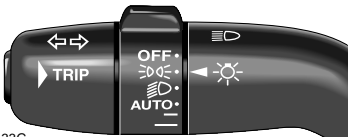
OFF



JAG0133G

All exterior lamps OFF (except vehicles provided with daylight running lights).

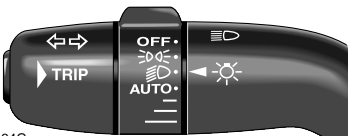
Side lamps



JAG0133G

Switches on front sidelamps, tail, number plate and any other marker lamps required by local legislation. When the external lamps are ON the instruments will also be lit.

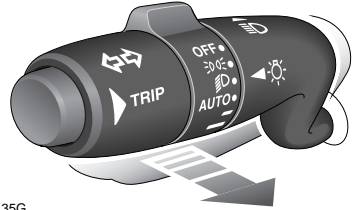
Headlamps



JAG0134G

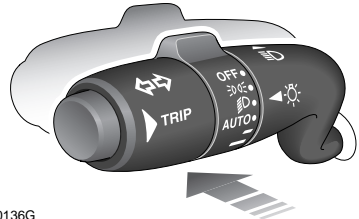
With the ignition in **convenience mode**, see page 16, this position switches on low beam headlamps in addition to the lamps switched on in sidelamp position.

The left-hand column stalk switch has two positions for controlling the high beam.



JAG0135G

Pulling the switch towards the steering wheel and releasing causes the high beam to flash on and off. The high beam can be flashed at any time when the switch is pulled and will remain ON for as long as the switch is held.



JAG0136G

The second position is to switch high beam headlamps ON. With the ignition system ON, see page 25, first select low beam lamps, and then push the column light switch away from the steering wheel.

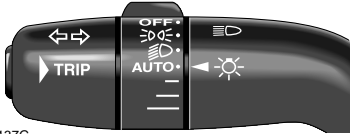
The blue warning light on the instrument cluster and high beam headlamps will come ON.

To turn high beam OFF, pull the column switch towards the steering wheel to return to low beam.

Lighting

Note: If low beam is switched OFF, the rotary controls switch is moved, with high beam still activated, both low and high beam will be extinguished. Both low and high beam will illuminate if low beam is turned on again.

Autolamps



JAG0137G

A light sensor control, mounted on the front of the fascia, monitors exterior light levels and automatically switches the sidelamps and low beam headlamps ON or OFF.

The ignition system must be ON for full automatic light operation.

When light fades towards dusk, the sidelamps and headlamps will switch ON automatically.

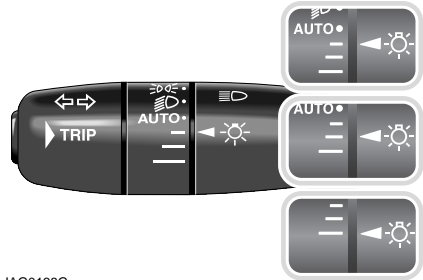
At dawn, as light increases, the sidelamps and headlamps switch OFF automatically.

Do not cover the sensor and keep the windscreen clean. Obstructing the light in this area of the sensor may lead to unwanted operation of the sidelamps and headlamps.

Windscreen wiper detection

(This function only operates when autolamps is selected.) The sidelamps and headlamps will switch ON automatically if the windscreen wipers are switched ON for 20 seconds or more. Once the windscreen wipers are switched OFF, the sidelamps and headlamps will automatically switch OFF two minutes later.

Autolamps with Exit Delay



JAG0138G

Three settings on the rotary collar set the time that the headlamps will remain on after the driver's door has closed:

- 30 seconds.
- 60 seconds.
- 120 seconds.

The message centre will display the change set delay **AUTOLAMP DELAY X:XX** or **AUTOLAMP DELAY OFF** when the autolamp delay function has been turned OFF.

Note: If the light switch rotary collar is in the **AUTO** position there will be no exit delay and the headlamps will turn off when the ignition system is OFF.

Door guard and puddle lights

Door guard lights are fitted to each door to give warning of an open door to passing vehicles. Puddle lights illuminate the step out area at night.

Each light comes on automatically when the door is opened. If the door is left open the lights remain on for approximately 15 minutes after returning from **convenience mode** to power off.

Lighting

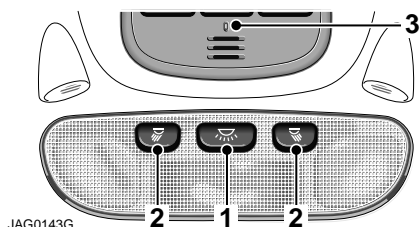
Daylight running lights

In certain countries it is a legal requirement for the lights to be on during the hours of daylight.

With the rotary collar in the OFF position, low beam headlamps, sidelamps, tail, number plate lamps and, where fitted, side marker lamps will switch on automatically with the following conditions:

- The ignition is in ON (Scandinavia only).
- The vehicle gear selector out of park.
- The parkbrake is not applied (is released).

Cabin Lighting



1. Courtesy light and footwell lights.
2. Left and right-hand reading and map lights.
3. Centre console illumination.

Interior lighting comprises, front overhead courtesy lights, two front reading and map lights and front puddle lights. Vanity mirrors, glove compartment, footwell and luggage compartment lights are also provided.

Press the centre switch **1** in the front roof console to turn the courtesy lights, puddle lights and footwell lights on. A second press turns the lights off. The lights also operate to illuminate the vehicle interior when a door is opened.

The interior courtesy light and footwell lights can be de-activated by pressing the centre switch for more than two seconds. The courtesy light will flash, then switch OFF.

The courtesy light and footwell light will come on again when the light switch is pressed again for more than two seconds.

The centre console area is illuminated by a small light from the overhead console **3**. This is on whenever the sidelamps are on and can be controlled by the dimmer switch.

Reading lighting

The reading and map lights are turned on and off by individual switches, **2** on the front overhead console.

Illuminated entry and exit

The interior lights will gradually illuminate when a door is opened and go out when the engine is started or approximately 30 seconds after the last door is closed. If any door is left open, the lights will fade off after approximately 15 minutes after returning from **convenience mode** to power off.

When the vehicle is unlocked the courtesy lights will come on at maximum brightness for approximately 30 seconds if a door is not opened.

With the engine running, opening any door will put on all interior lights, they will go out immediately after the last door is closed.

Lighting

Glove compartment

The glove compartment will illuminate when opened.

Luggage compartment lighting

The luggage compartment will be illuminated when the lid is opened.

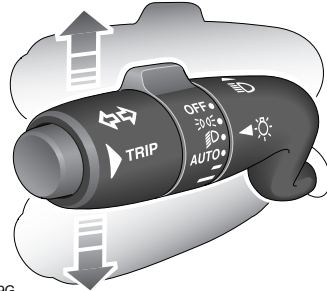
Battery saver

If the interior lights are switched on using the centre switch in the overhead console and the ignition switch is in **convenience mode**, the lights will automatically turn OFF after approximately 15 minutes after returning from **convenience mode** to power off.

If the interior lights are switched on by opening a door, the lights will automatically turn off after approximately 15 minutes after returning from **convenience mode** to power off.

If the glove compartment lights, luggage compartment lights, reading and map lights or vanity lights are switched on, and the ignition switch is in **convenience mode** or the remote handset is removed, the lights will automatically turn OFF after approximately 15 minutes after returning from **convenience mode** to power off.

DIRECTION INDICATORS



JAG0139G

The direction indicators operate when the ignition system is ON.

The left column stalk has two positions for indicating left or right turn.

The first position, moving the stalk up or down, causes the indicator to flash while it is held in this position.

Flicking the stalk will give a three flash lane changing signal.

The second position is a full movement of the stalk up or down to indicate for a right or left turn, which can then be released. The indicators will remain flashing and will cancel when the turn is completed.

An audible ticking and a flashing green arrow on the instrument cluster indicates that the selected direction indicator is ON.

Note: Should a direction indicator bulb fail, the corresponding side green warning light will flash at twice the normal rate. The audible ticking will sound at twice the normal rate.

Lane change flash

Move the left column stalk partially up or down against spring pressure, then release, to indicate a lane change. The relevant direction indicator flashes three times.

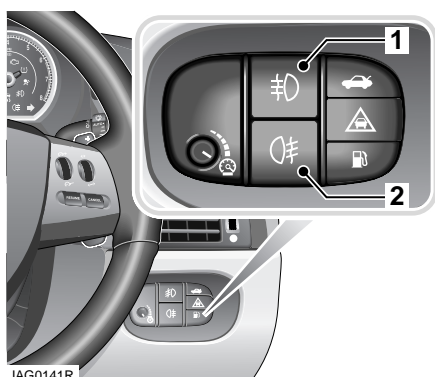
Lighting

If the stalk is held against spring pressure, the direction indicators will continue to operate until the stalk is released.

Lane change flash can be disabled or enabled by a Jaguar Dealer/Authorised Repairer.

FRONT FOG LAMPS

The fog lamps can only be switched on when the ignition system is ON and when sidelamp or low beam is selected.



With the lighting control switch in sidelamp or low beam position, press the switch **1** to turn on the front fog lamps. Pushing the switch again will turn off the front fog lamps.

Note: The front fog lamps should only be used when visibility is severely restricted by fog.

REAR FOG LAMPS

The rear fog lamp can only be switched on if the low beam headlamps are on or if the side lamps and front fog lamps are switched on.

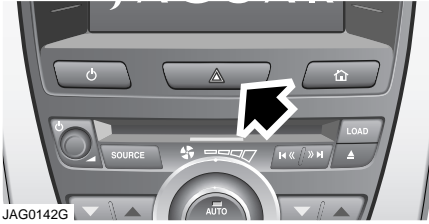
Press the switch **2** to turn on the rear fog lamp. Pushing the switch again will turn off the rear fog lamp.

Note:

- Both front and rear fog lamps will be turned off when the ignition system is turned off, but will not be illuminated when the ignition system is turned on again.
- The rear fog lamp should only be used when visibility is severely restricted by fog.

Lighting

HAZARD WARNING FLASHERS



The switch is in the centre console below the touch-screen and operates with the ignition ON or OFF. Use only in an emergency to warn traffic of a vehicle breakdown or approaching danger.

To operate: Press the switch; the direction indicators, the instrument cluster green indicators and audible warning will operate in unison. The switch icon will flash in unison with the indicators.

To cancel: Press the switch again.

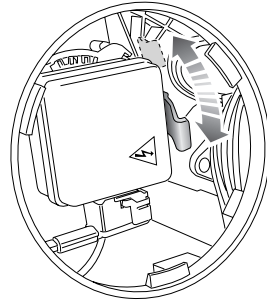
HEADLAMP LEVELLING

Auto headlamp levelling

Automatic levelling of the headlamps is a feature which avoids dazzling oncoming drivers. A control unit adjusts the aim of the lamps during acceleration, deceleration and vehicle load conditions.

ADJUSTING THE HEADLAMPS

When touring in right-hand traffic countries, use the beam adjustment mechanism located within each headlamp unit to alter the beam pattern accordingly.



When this is moved it enables the vehicle to be driven in opposite hand drive markets without having to stick blanking decals onto the headlamp lens.

To adjust the headlamp:

1. Remove the headlamp unit, see page 52.
2. Twist counter clockwise and lift off the rear headlamp unit cover.
3. Locate the adjustment lever, as shown.
4. Move the lever fully downwards.
5. Refit the high beam cover and the headlamp unit, see page 53.

Remember to place the levers back in their original position when you have returned to your country of origin.

Lighting

CHANGING A BULB

It is important that only the Jaguar specified bulbs are used when renewing bulbs.

The message centre will display a message indicating which bulb requires to be replaced.

Before renewing bulbs, switch off the ignition system and light switches.

To change the bulbs within the headlamp and tail lamp, the complete units require to be removed from the vehicle.

Note: *In most countries it is illegal to use a vehicle with a defective exterior lamp bulb.*

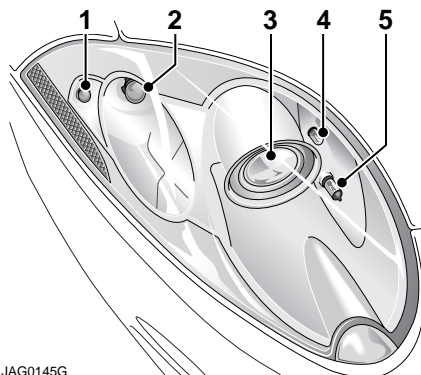
Headlamp unit



WARNING:

- **Replacement or maintenance of Xenon lamps should be carried out only by a Jaguar Dealer/Authorised Repairer.**
- **Used Xenon lamp units contain mercury which is hazardous and can be injurious to health.**
- **Bi-Xenon lamp units operate at a high temperature. If they have recently been in use, allow sufficient time for them to cool down before touching them.**
- **The Xenon system generates up to 28,000 volts and contact with this voltage could lead to a fatality. Ensure that headlamps are switched off before working on the system.**

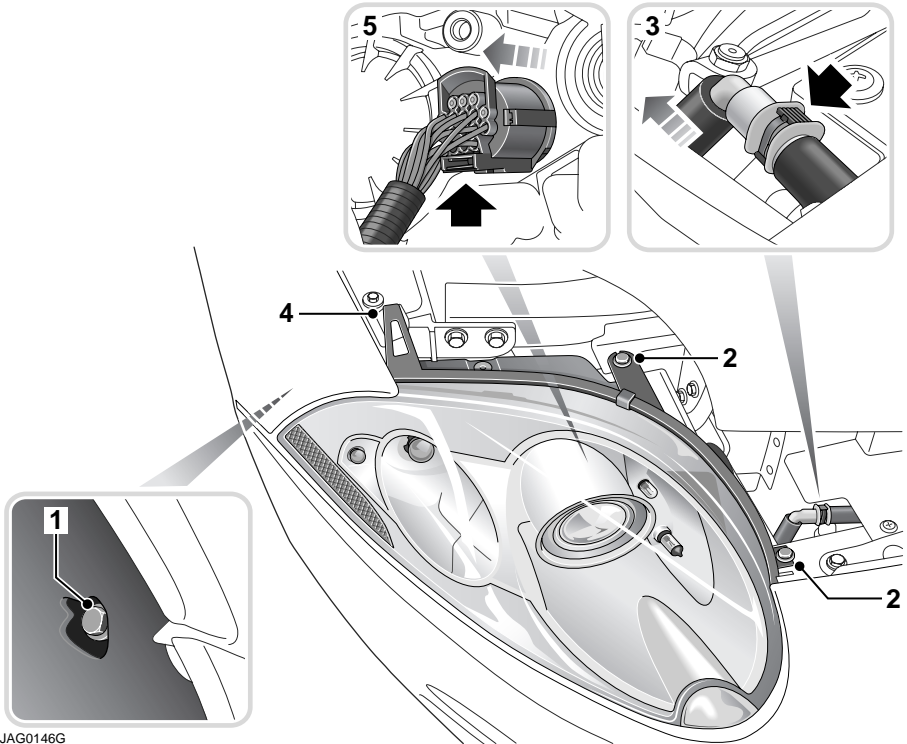
Caution: Seek advice about proper disposal of Bi-Xenon lamp units from your Jaguar Dealer/Authorised Repairer or your local authority.



1. Side marker (bulb type WY5W).
2. Direction indicator (bulb type PY21W).
3. Low and high beam projector unit (bulb type D1S35W).
4. Side lamp (bulb type W5W).
5. Cornering lamp (bulb type H8).

Lighting

Removal of the headlamp unit

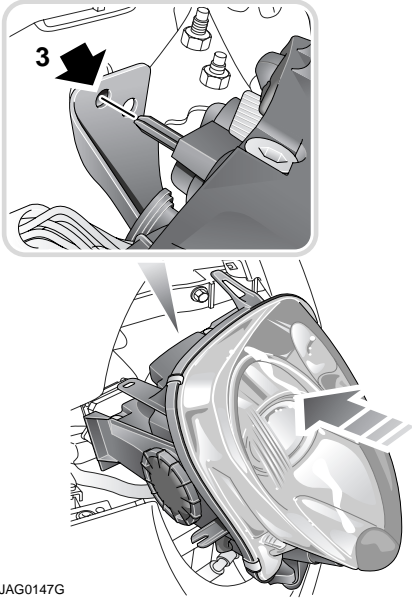


JAG0146G

1. Remove the lower headlamp securing bolt **1** located in the front of the wheel arch. Turn the steering wheel to the left, when removing the right-hand headlamp and to the right when removing the left-hand headlamp.
2. Open the bonnet and remove the upper securing bolts **2**.
3. Disconnect the headlamp powerwash connector by pressing the button and pulling the pipe apart **3**, some washer fluid may drain from the pipe when it is disconnected.
4. Release the headlamp locating peg by lifting the tongue upwards **4**.
5. Carefully ease the headlamp unit forward to gain access to the wiring multi-plug connector. Release the connector by pressing upwards on the release button and pull the wiring multi-plug from the headlamp **5**. Place the headlamp unit on a flat surface covered in a soft material to prevent damage to the unit's lens.

Lighting

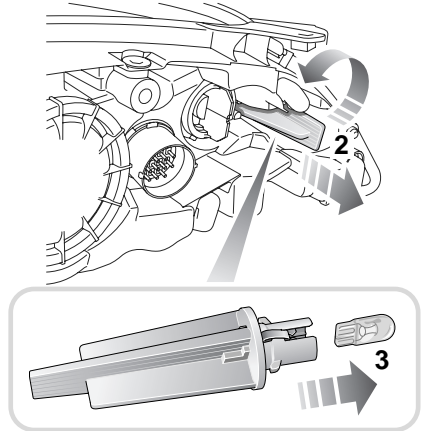
Refitting the headlamp unit



1. Reconnect the wiring multi-plug connector.
2. Offer up the unit into position.
3. Ensure that the locating peg is fitted into the in-board locating hole.
4. To secure the headlamp unit, first secure the wheel arch screw, then repeat the removal procedure in the reverse order, ensuring that the powerwash pipe is reconnected.

Note: After the replacement of any bulb and the fitting of the headlamp unit, the aim of the headlamps should be checked by a Jaguar Dealer/ Authorised Repairer.

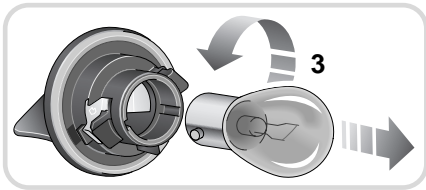
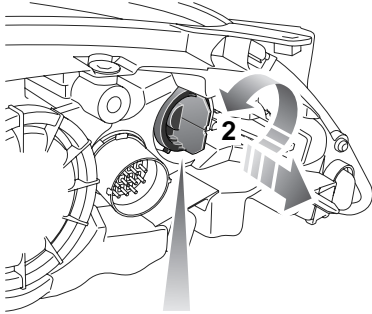
Front side marker lamp



1. Remove the headlamp unit, see page 52.
2. Twist the bulb holder counter clockwise and pull out the bulb complete with the bulb holder.
3. Pull the bulb out of the bulb holder.
4. Insert the new bulb (WY5W) and repeat the above procedure in reverse order.

Lighting

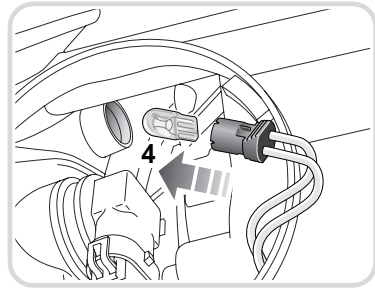
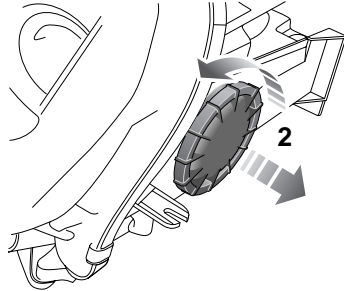
Front direction indicator lamp



JAG0149G

1. Remove the headlamp unit, see page 52.
2. Twist the bulb holder counter clockwise and pull out the bulb complete with the electrical connector.
3. Twist and pull the bulb out of the bulb holder.
4. Insert the new bulb (PY21W) and repeat the above procedure in reverse order.

Front side lamp



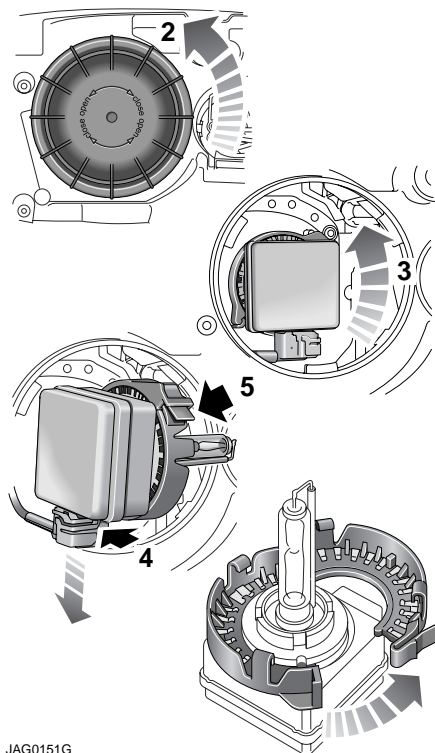
JAG0150G

1. Remove the headlamp unit, see page 52.
2. Twist and lift off the side domed cap.
3. Pull out the bulb complete with bulb holder.
4. Pull the bulb out of the bulb holder.
5. Insert the new bulb (W5W) and repeat the above procedure in the reverse order. Ensure that the cover is fitted correctly to retain the water tightness.

Lighting

Low and high beam projector unit

Caution: It is strongly advised that the High Intensity Discharge (HID) Xenon low and high beam project unit (D1S35W) is replaced by a Jaguar Dealer/ Authorised Repairer.



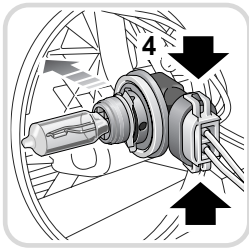
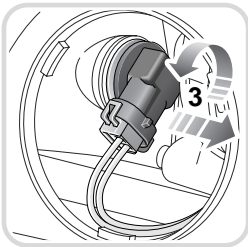
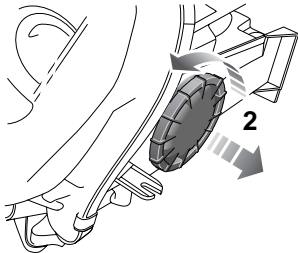
JAG0151G

1. Remove the headlamp unit, see page 52.
2. Twist and lift off the rear domed cap.
3. Twist the bulb unit counter clockwise to unlock it. Pull the bulb unit clear of the headlamp unit.
4. Press the electrical connector release lever and disconnect the bulb unit.
5. Press the bulb unit adaptor ring catch and remove the adaptor ring from the bulb unit.
6. Secure the bulb unit adaptor ring onto the new bulb (D1S35W) and repeat the above procedure in the reverse order. Ensure that the cover is fitted correctly to retain the water tightness.

Lighting

Cornering or static bending lamp

Caution: Halogen bulbs will be damaged if touched by hand or contaminated with oil or grease. It is important to use clean gloves or lint free cloth when handling a bulb which is to be used again. A contaminated bulb may be cleaned with methylated spirit before refitting.



JAG0152G

1. Remove the headlamp unit, see page 52.
2. Twist and lift off the side domed cap.

3. Twist the bulb holder counter clockwise to unlock, then pull out the bulb complete with electrical connector.
4. To release the bulb unit, lift the two catches of the electrical connector, then pull to remove the bulb unit.
5. Insert the new bulb unit (H8) and repeat the above procedure in the reverse order. Ensure that the cover is fitted correctly to retain the water tightness.

Front fog lamp

It is recommended that the front fog lamp bulb is renewed by a Jaguar Dealer/ Authorised Repairer.

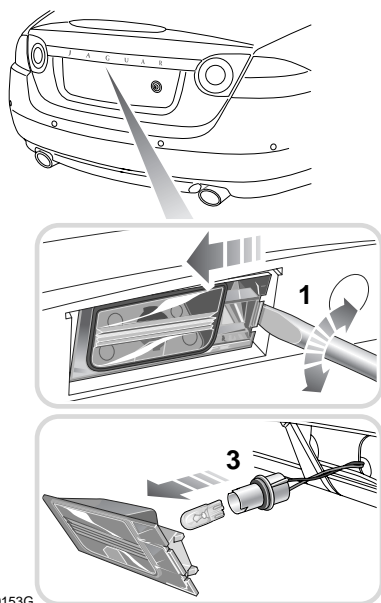
Rear fog and reverse lamps

Caution: LED lamp units operate at a high temperature. If they have recently been in use, allow sufficient time for them to cool down before touching them.

These lamps are LED units and are integral to the luggage compartment lid. They should only be replaced by Jaguar Dealers/ Authorised Repairers.

Lighting

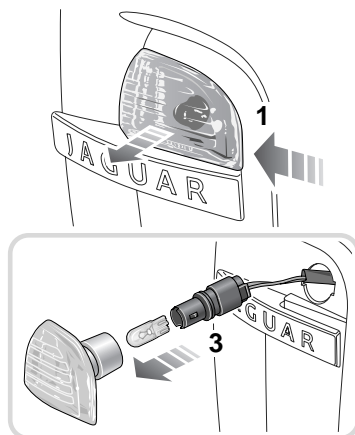
Number plate lamp



JAG0153G

1. Insert a wide flat bladed suitable tool, twist and lever the lens out of the surround panel. Ensure that the lens moves to the outer edge of the surround panel to release the securing tangs.
2. Twist and pull out the bulb holder complete with bulb.
3. Pull the bulb out of the bulb holder.
4. Insert the new bulb (W5WL).
5. Refit the lens by locating the outboard securing tangs first and then pressing it firmly into the recess until it clicks.

Side repeater indicator

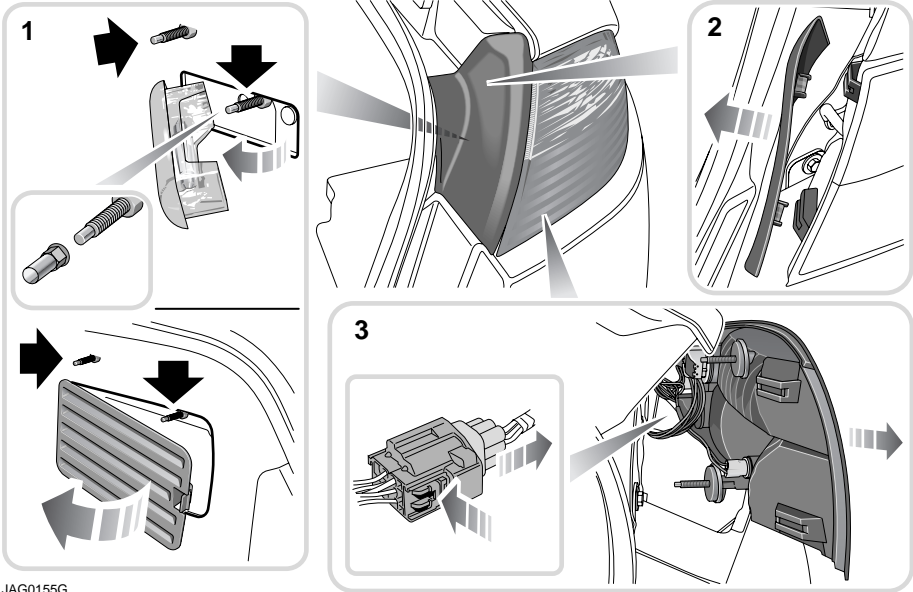


JAG0154G

1. Push the lens firmly towards the rear of the vehicle and withdraw the lamp unit from the wing panel.
2. Twist to release the bulb holder from the lens unit.
3. Pull the bulb out of the bulb holder.
4. Insert the new bulb (WY5W) and repeat the above procedure in the reverse order.

Lighting

Removal of the rear lamp unit



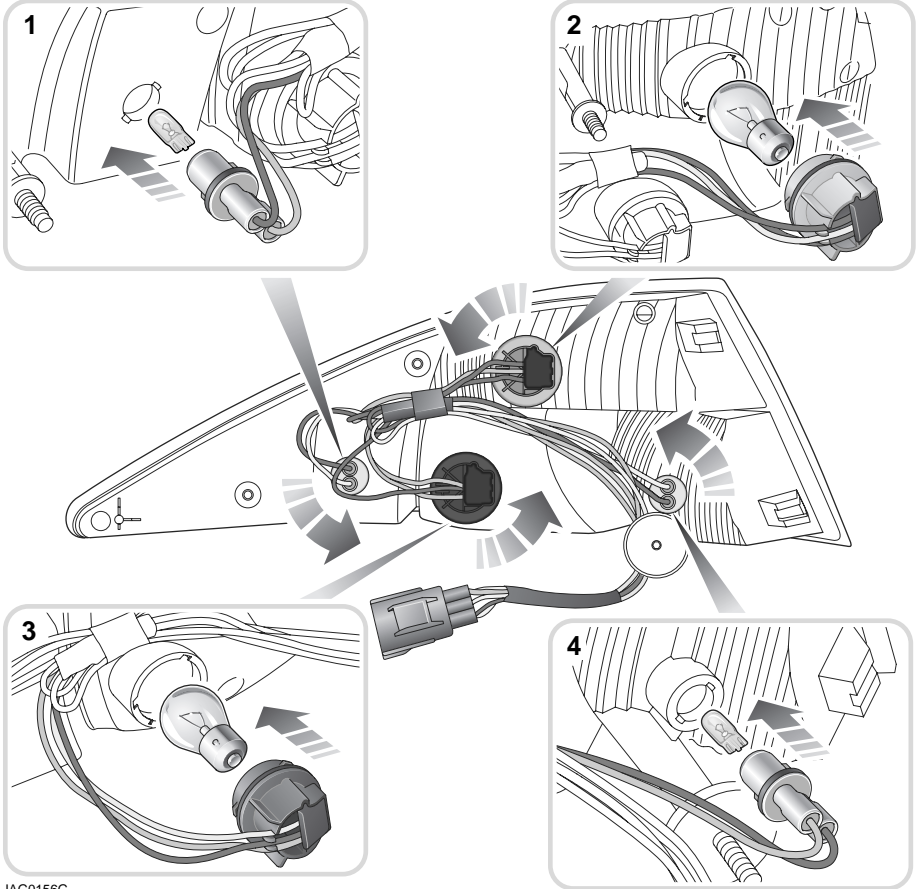
JAG0155G

The rear lamp unit contains four lamp bulbs and it is necessary to remove the unit from the vehicle in order to change any of the bulbs.

1. Open the luggage compartment. For the right-hand side unit, detach the interior light unit from the trim panel (Convertible) or the vent trim panel (Coupe) and remove the two rear lamp unit securing nuts. For the left-hand side unit, detach the vent trim panel and remove the rear lamp unit securing nut.
2. Firmly pull the rear lamp unit trim panel from the vehicle.
3. Firmly pull the rear lamp unit away from the vehicle and disconnect the wiring multi-plug connector. Remove the lamp unit from the vehicle and place the unit on a flat surface covered in a soft material to prevent damage to the unit's lens. Each bulb is now accessible by twisting off its bulb holder and removing the bulb, see page 59.
4. Insert a new bulb and repeat the above procedure in the reverse order.

Lighting

Rear lamp unit replacement bulbs



JAG0156G

1. Side marker, (W5W).
2. Direction indicator, (PY21W Silver Vision).
3. Stop and Tail, (P21/5W).
4. Tail, (W5W).