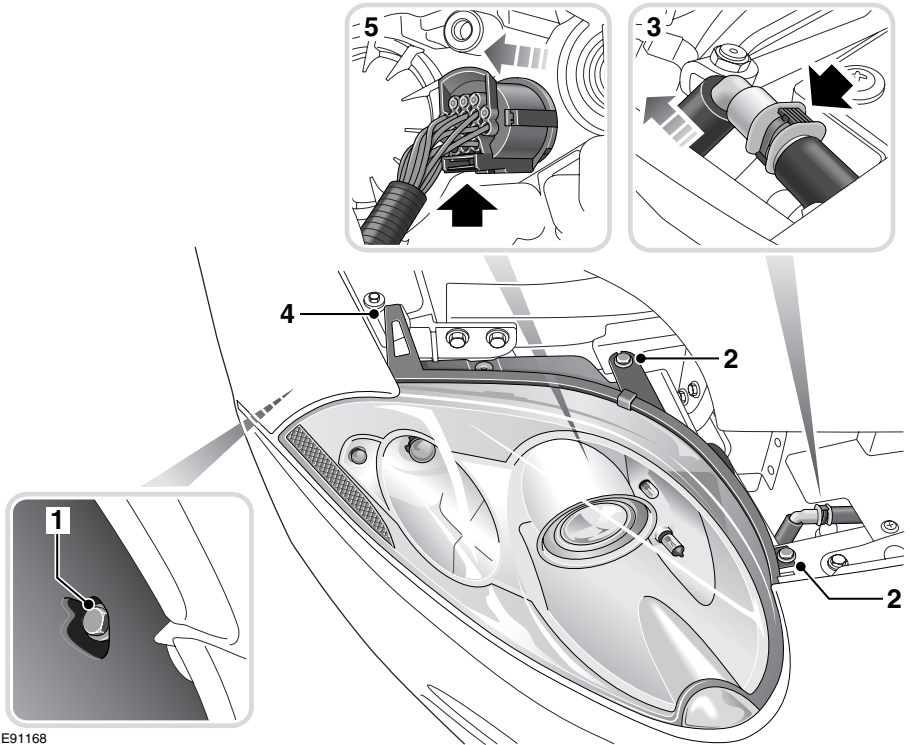


Lighting

Removal of the headlight unit

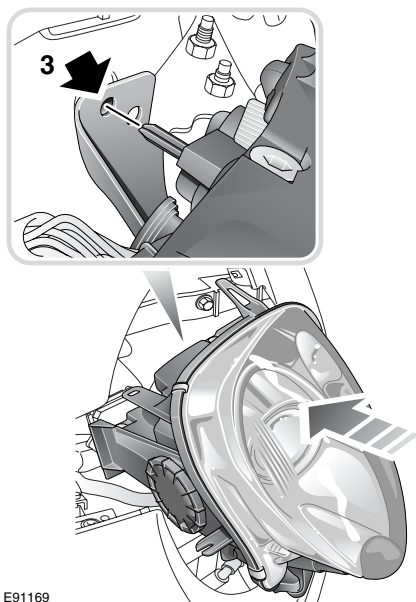


E91168

1. Remove the lower headlamp securing bolt **1** located in the front of the wheel arch. Turn the steering wheel to the left, when removing the right-hand headlamp and to the right when removing the left-hand headlamp.
2. Open the bonnet and remove the upper securing bolts **2**.
3. Disconnect the headlamp powerwash connector by pressing the button and pulling the pipe apart **3**, some washer fluid may drain from the pipe when it is disconnected.
4. Release the headlamp locating peg by lifting the tongue upwards **4**.
5. Carefully ease the headlamp unit forward to gain access to the wiring multi-plug connector. Release the connector by pressing upwards on the release button and pull the wiring multi-plug from the headlamp **5**. Place the headlamp unit on a flat surface covered in a soft material to prevent damage to the unit's lens.

Lighting

Refitting the headlamp unit

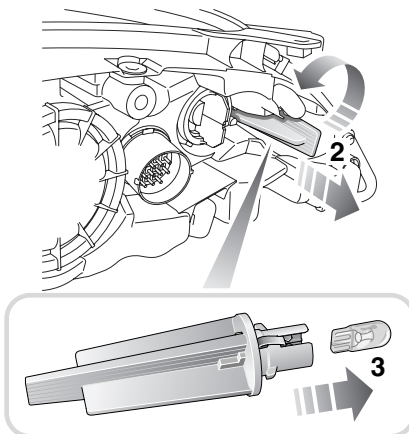


E91169

1. Reconnect the wiring multi-plug connector.
2. Offer up the unit into position.
3. Ensure that the locating peg is fitted into the in-board locating hole.
4. To secure the headlamp unit, first secure the wheel arch screw, then repeat the removal procedure in the reverse order, ensuring that the powerwash pipe is reconnected.

Note: After the replacement of any bulb and the fitting of the headlamp unit, the aim of the headlamps should be checked by a Jaguar Dealer/Authorised Repairer.

Front side marker lamp

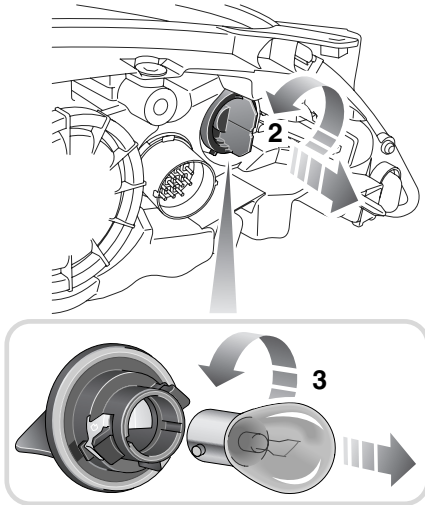


E91170

1. Remove the headlamp unit.
2. Twist the bulb holder counterclockwise and pull out the bulb complete with the bulb holder.
3. Pull the bulb out of the bulb holder.
4. Insert the new bulb (WY5W) and repeat the above procedure in reverse order.

Lighting

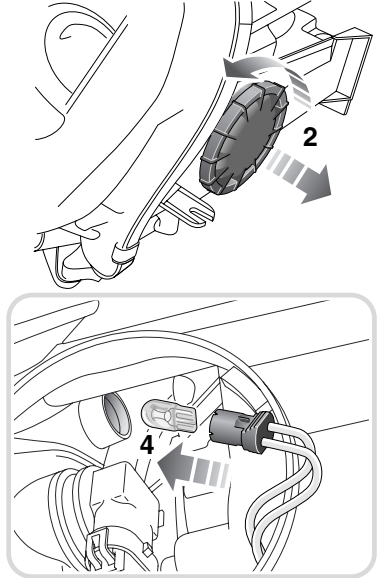
Front direction indicator lamp



E91171

1. Remove the headlamp unit.
2. Twist the bulb holder counterclockwise and pull out the bulb complete with the electrical connector.
3. Twist and pull the bulb out of the bulb holder.
4. Insert the new bulb (PY21W) and repeat the above procedure in reverse order.

Front sidelamp



E91172

1. Remove the headlamp unit.
2. Twist and lift off the side domed cap.
3. Pull out the bulb complete with bulb holder.
4. Pull the bulb out of the bulb holder.
5. Insert the new bulb (W5W) and repeat the above procedure in the reverse order. Ensure that the cover is fitted correctly to retain the water tightness.

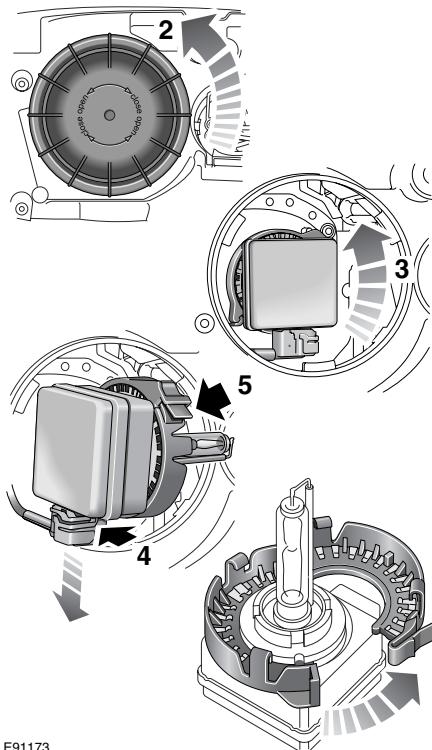
Lighting

High and low beam projector unit

CAUTION

! It is strongly advised that the High Intensity Discharge (HID) Xenon low and high beam project unit (D1S35W) should be replaced by a Jaguar Dealer/Authorised Repairer.

4. Press the electrical connector release lever and disconnect the bulb unit.
5. Press the bulb unit adaptor ring catch and remove the adaptor ring from the bulb unit.
6. Secure the bulb unit adaptor ring onto the new bulb (D1S35W) and repeat the above procedure in the reverse order. Ensure that the cover is fitted correctly to retain the water tightness.



E91173

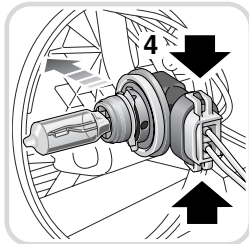
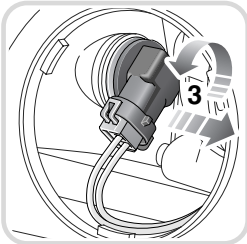
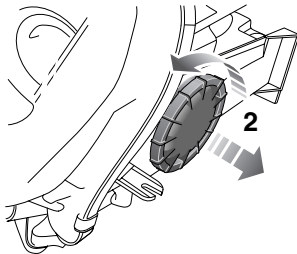
1. Remove the headlamp unit.
2. Twist and lift off the rear domed cap.
3. Twist the bulb unit counterclockwise to unlock it. Pull the bulb unit clear of the headlamp unit.

Lighting

Cornering or static bending lamp

CAUTION

! Halogen bulbs will be damaged if touched by hand or contaminated with oil or grease. It is important to use clean gloves or lint free cloth when handling a bulb which is to be used again. A contaminated bulb may be cleaned with methylated spirit before refitting.



1. Remove the headlamp unit.
2. Twist and lift off the side domed cap.

3. Twist the bulb holder counterclockwise to unlock, then pull out the bulb complete with electrical connector.
4. To release the bulb unit, lift the two catches of the electrical connector, then pull to remove the bulb unit.
5. Insert the new bulb unit (H8) and repeat the above procedure in the reverse order. Ensure that the cover is fitted correctly to retain the water tightness.

Rear fog, reverse and high level brake lamps

WARNING

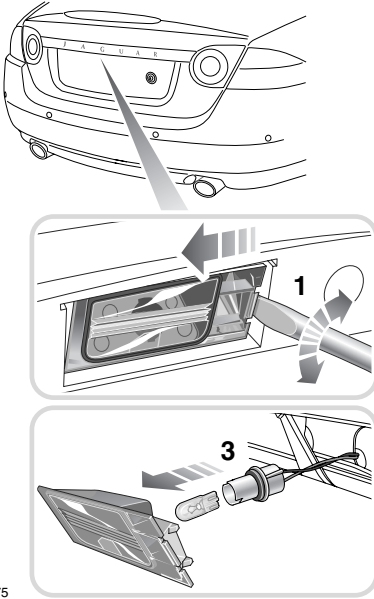
! LED lamp units operate at a high temperature. If they have recently been in use, allow sufficient time for them to cool down before touching them.

These lamps are LED units and are integral to the luggage compartment lid. They should be replaced by a Jaguar Dealer/Authorised Repairer.

E91174

Lighting

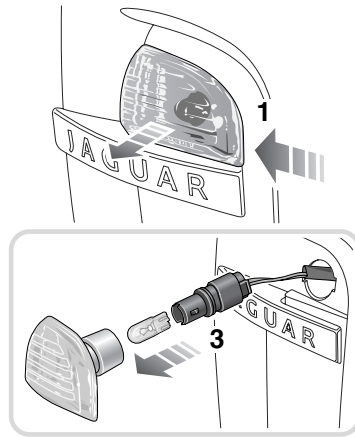
Number plate lamp



E91175

1. Insert a wide flat bladed suitable tool, twist and lever the lens out of the surround panel. Ensure that the lens moves to the outer edge of the surround panel to release the securing tangs.
2. Twist and pull out the bulb holder complete with bulb.
3. Pull the bulb out of the bulb holder.
4. Insert the new bulb (W5WL).
5. Refit the lens by locating the outboard securing tangs first and then pressing it firmly into the recess until it clicks.

Side repeater indicator

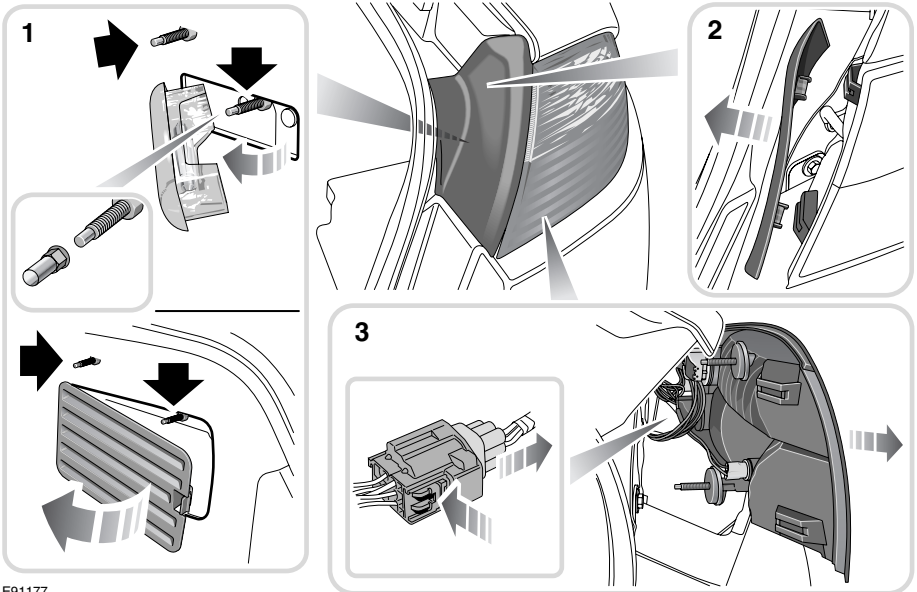


E91176

1. Push the lens firmly towards the rear of the vehicle and withdraw the lamp unit from the wing panel.
2. Twist to release the bulb holder from the lens unit.
3. Pull the bulb out of the bulb holder.
4. Insert the new bulb (WY5W) and repeat the above procedure in the reverse order.

Lighting

Removal of the rear lamp unit



E91177

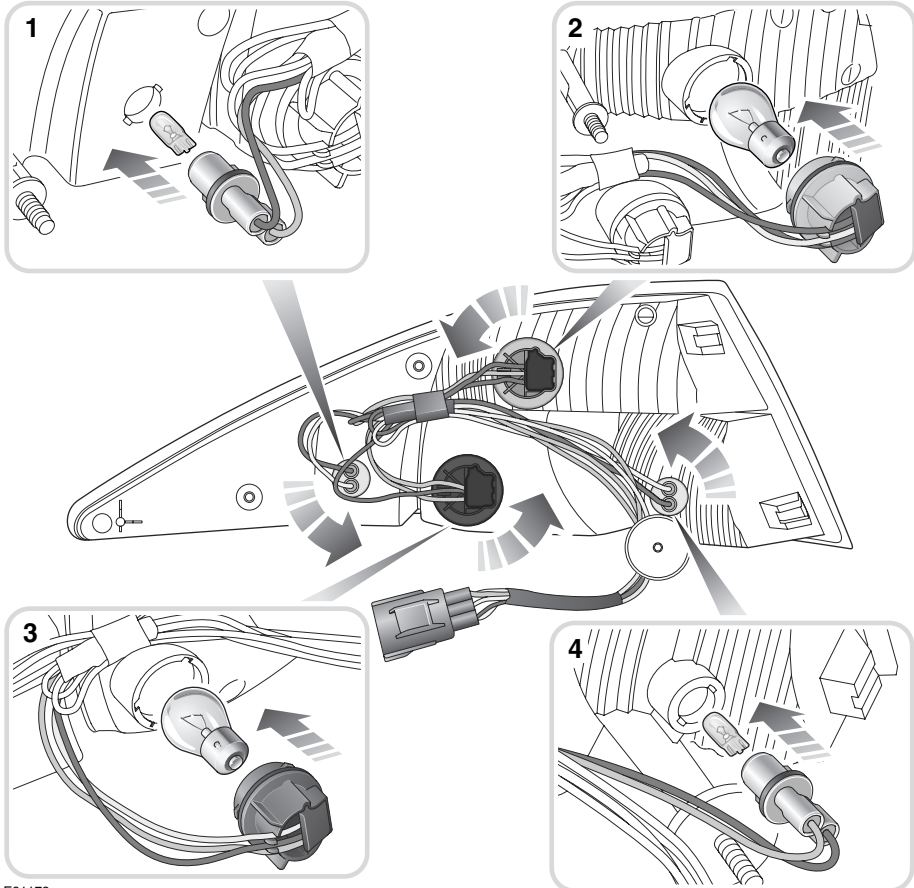
The rear lamp unit contains four lamp bulbs and it is necessary to remove the unit from the vehicle in order to change any of the bulbs.

1. Open the luggage compartment. For the right-hand side unit, detach the interior lamp unit from the trim panel (Convertible) or the vent trim panel (Coupe) and remove the two rear lamp unit securing nuts. For the left-hand side unit, detach the vent trim panel and remove the rear lamp unit securing nut.
2. Firmly pull the rear lamp unit trim panel from the vehicle.

3. Firmly pull the rear lamp unit away from the vehicle and disconnect the wiring multi-plug connector. Remove the lamp unit from the vehicle and place the unit on a flat surface covered in a soft material to prevent damage to the unit's lens. Each bulb is now accessible by twisting off its bulb holder and removing the bulb.
4. Insert a new bulb and repeat the above procedure in the reverse order.

Lighting

Rear lamp unit replacement bulbs



E91178

1. Side marker.
2. Direction indicator.
3. Stop and Tail.
4. Tail.

Lighting

BULB SPECIFICATION CHART

CAUTION



Before attempting to replace a bulb make sure that both the affected lamp and the vehicle's ignition system are turned off. If the circuit is live a short circuit can occur which may damage the vehicle's electrical system.

Lamp	Specification	Power (Watts)
Xenon headlamp (Dip and Main beam).	D1S35W	35
Front side lamps.	W5W	5
Front direction indicators.	PY21W	21
Cornering lamps.	H8	55
Side repeater lamps.	WY5W	5
Stop/tail lamps.	P21/5W	21/5
Number plate lamps.	W5WL	5
Rear direction indicators.	PY21W Silver Vision	21
Rear side marker lamps.	W5W	5
Tail lamp.	W5W	5

Wipers and washers

Note: When starting a journey with a wet windscreen, the rain sensing wipers may not operate immediately when the ignition system is switched ON.

Therefore, a flick wipe should be used to clear the windscreen of any moisture.

WINDSCREEN WASHERS

WARNING

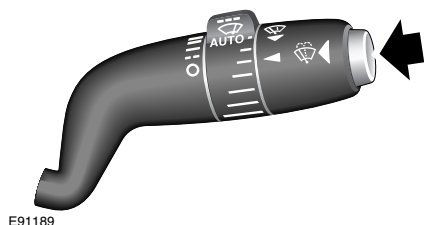


Some screenwash products are flammable, do not allow screenwash to come into contact with sources of ignition.

CAUTION



Only screenwash products which are approved for automotive use should be used, and only in accordance with the manufacturer's instructions.



Program wash and wipe

Timed jet function: If timed jet function is configured, the windscreen washer jets (located on the wiper arms) only spray on the up stroke of the wiper arms. This function can be configured by your Jaguar Dealer/Authorised Repairer.

With the stalk in the OFF or intermittent position, the program wash and wipe sequence is activated by pushing the button on the end of the column switch.

Short press: The wipers will perform five normal speed wipes, followed by a drip wipe. The washer jets will spray on the first two wipes.

Extended press: The wipers and washers will operate continuously at normal speed until the button is released. When released, the wipers will complete their current wipe and then complete three further wipes, followed by a drip wipe.

Drip wipe: If drip wipe is configured, following completion of the program wash and wipe cycles, the wipers will pause for four seconds then complete a drip wipe to clear any remaining drips from the windscreen.

This function can be configured by your Jaguar Dealer/Authorised Repairer.

Washer

If normal or fast wipe is selected, pressing the program wash and wipe button will operate the washer jets.

- Short press: The washer jets spray for two wipes.
- Extended press: The washer jets spray until the button is released or a 10 second timer has elapsed.

Note: If the button is pressed during the up-stroke of the wipers, the washer jets may spray for the completion of that wipe, prior to spraying for the required number of wipes or duration.

If the rotary collar is set to **AUTO**, the wipers will operate until no moisture is detected.

Wipers and washers

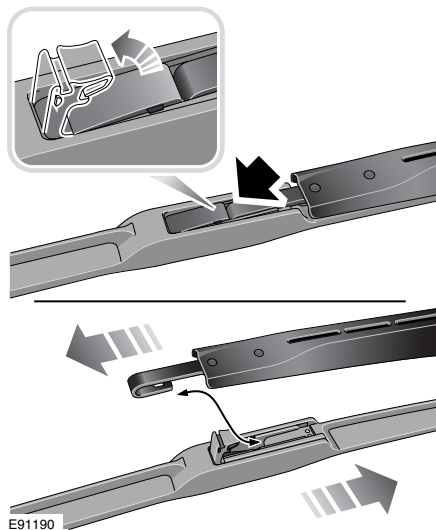
Use Jaguar Screen Clean Paste to remove contamination from the windscreen to ensure effective wiping or if smearing or juddering becomes evident.

A more aggressive cleaning agent may be required to remove stubborn contamination. You should contact a Jaguar Dealer/Authorised Repairer for advice.

To replace the wiper blade, position the wiper arm into the aperture in the middle of the new blade assembly and fully locate the blade into the wiper arm. Push the lock tab firmly into position so that the wiper blade is locked into the wiper arm.

CHANGING THE WIPER BLADES

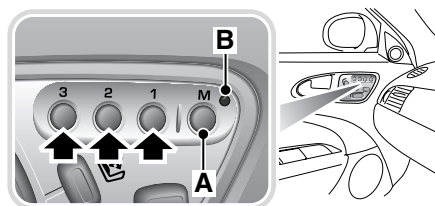
Only fit replacement wiper blades that are identical to the original specification.



Lift the locking tab to release the blade assembly and slide the wiper assembly off the end of the wiper arm. Carefully replace the wiper arm assembly to its stowed position.

Convenience features

MEMORY FUNCTION



E91398

This facility enables the position of the driver's seat, steering column and exterior rear-view mirrors to be memorised and recalled. Three different position sets can be entered into the memory.

Setting a driving position

To store a driving position in the memory:

1. Adjust the seat, steering column and exterior rear-view mirrors to the desired positions.
2. In the door switch pack, push the **M** memory button, **A**, and the red LED, **B**, will illuminate for a five second period.
3. While the red LED is illuminated, push either button **1**, **2** or **3** to memorise. The LED will go out and a chime will indicate that the setting procedure is complete. Additionally, if the ignition is on, the message centre will display a message that the settings have been saved.

To replace a memorised position with a new position

Adjust the seat to the desired position, perform steps 2 and 3. The previous memory will be erased and the new position will be set.

Recalling a memorised position from the door switchpack

Press and hold the appropriate memory button (**1**, **2** or **3**). The button has to be pressed and remain pressed until the recall is complete. If the button is released before total recall is completed, all movement will cease.

Memory system operating tips

- When making adjustments to a set driving position, reset the new position using the same memory button.
- Ensure that the seat has completed moving into the required memory position before shifting the gear selector from the **P** position.

Passenger seat memory setting

The passenger door has a seat memory switch pack similar to that on the driver's door.

The passenger seat can be set to three memory positions by using the memory setting buttons **1**, **2** and **3**.

The procedure for the setting and the recalling of the passenger seat memory is the same as for the driver's seat.

However, there are no acceptance messages or a completed procedure chime.

Maintenance

Weekly checks

- Engine oil level. See **ENGINE OIL CHECK** (page 216).
 - The engine oil level should be checked more frequently if the vehicle is driven for prolonged periods at high speeds.
- Engine coolant check. See **ENGINE COOLANT CHECK** (page 217).
- Brake fluid level. See **BRAKE FLUID CHECK** (page 219).
- Power steering fluid level. See **POWER STEERING FLUID CHECK** (page 220).
- Screen washer fluid level. See **WASHER FLUID CHECK** (page 221).
- Tyre pressures and condition.
- Operate air conditioning.

Monthly

Wiper blades -Check the quality of the wipe. If smearing or juddering is evident, clean the windscreen and renew the wiper blades.

Emission control

Your vehicle is fitted with various items of emission and evaporative control equipment, designed to meet specific territorial requirements. You should be aware that unauthorised replacement, modification or tampering with this equipment by an owner or repair shop, may be unlawful and subject to legal penalties.

In addition, engine settings must not be tampered with. These have been established to ensure that your vehicle complies with stringent exhaust emission regulations. Incorrect engine settings may adversely affect exhaust emissions, engine performance and fuel consumption. They may also cause high temperatures, which will result in damage to the catalytic converter and the vehicle.

Road testing dynamometers (rolling roads)

Because your vehicle is equipped with anti-lock brakes, it is essential that any dynamometer testing is carried out only by a qualified person, familiar with the dynamometer testing and safety procedures practised by Jaguar Dealers/Authorised Repairers.

Safety in the garage

WARNINGS



If the vehicle has been driven recently, do not touch exhaust and cooling system components until the engine has cooled.



Never leave the engine running in an unventilated area - exhaust gases are poisonous and extremely dangerous.



Do not work beneath the vehicle with the wheel changing jack as the only means of support.



Keep your hands and clothing away from drive belts and pulleys.



Remove metal wrist bands and jewellery, before working in the engine compartment.

Maintenance

ENGINE OIL CHECK

CAUTIONS

❗ If the message **ENGINE OIL PRESSURE LOW** is displayed, stop the engine as soon as it is safe to do so and seek qualified assistance. Do not start the engine until the cause has been identified and rectified.

❗ Your vehicle's warranty may be invalidated if damage is caused by the use of improper engine oil. Low quality or obsolete oils do not provide the protection required by modern, high performance engines. Failure to use an oil that meets the required specification could cause excessive engine wear, a build up of sludge and deposits and increased pollution. It could also lead to engine failure.

❗ Do not use oil additives of any type as engine damage could occur. Use only specified lubricants.

Engine oil consumption

A certain amount of oil consumption is normal. The rate of consumption will depend on the following:

- the quality and viscosity of the oil
- climatic conditions
- the speed at which the engine is being operated
- road conditions.

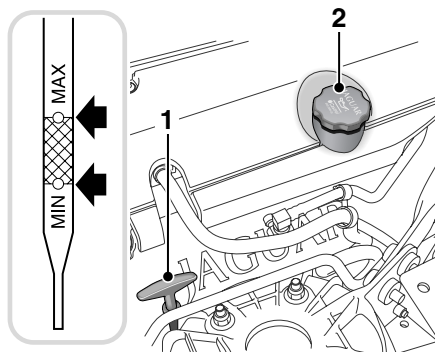
Drivers should expect above normal consumption when the engine is new.

Check the oil level regularly with the vehicle on flat, level ground.

Check the oil level with the engine completely cold.

Checking the oil level

Note: If it is necessary to check the oil level when the engine is hot, switch off the engine and let the vehicle stand for five minutes to allow the oil to drain back into the sump. Do not start the engine.



E91657

Remove the dipstick 1 and wipe clean with a non-fluffy cloth. Replace fully, then withdraw the dipstick. If the oil level is above the lower of the two dots on the dipstick then no additional oil is required.

If the oil level is at or below the lower of the two dots, remove the oil filler cap 2 and add 1.0 litre (1.76 Imp. pints) of oil.

Refit the filler cap and hand-tighten securely until one click is heard.

Maintenance

Recommended engine oil

Jaguar recommends:



Engine oil specification

An oil of 5W-30 viscosity meeting Jaguar specification WSS M2C913 - B is preferred. Where this is not possible, oil meeting ACEA A1/B1 or ACEA A3/B3 may be used.

Engine oil temperature ranges

For climates ranging from - 35°C (- 31°F) to + 50°C (+ 122°F), the following oil viscosities may be used:

0W-30 will protect from - 35°C (- 31°F) to + 35°C (+ 95°F).

5W-30 (preferred) will protect from -30°C (-22°F) to +35°C (+95°F).

0W-40 will protect from - 35°C (- 31°F) to + 50°C (+ 122°F).

5W-40 will protect from -30°C (-22°F) to +50°C (+122°F).

ENGINE COOLANT CHECK

WARNINGS



It is unsafe to run the engine in an overheated condition.



The radiator cooling fans may continue to run after the ignition has been switched off but will automatically switch off when the engine has cooled sufficiently.

WARNINGS

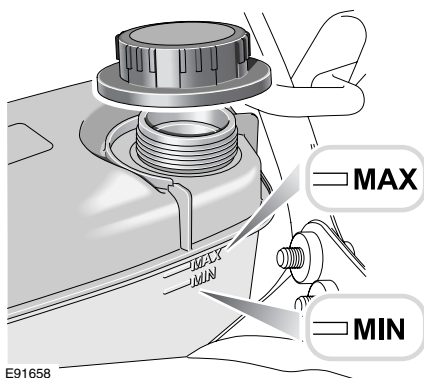


Do not remove the coolant reservoir filler cap while the engine is hot. If it is essential, then protect your hands against escaping steam. Slowly turn the cap counterclockwise to allow the steam pressure to escape completely before removing the cap.

CAUTION



If persistent coolant loss is noticed, seek qualified assistance immediately.



Check the level only when the engine is cold. The coolant level should be between the **MAX** and **MIN** indicators.

If the message centre displays the message **ENGINE OVERHEATING**, pull over and allow the engine to idle for five minutes and then switch off for ten minutes. Switch on, and provided that the warning does not re-occur, continue your journey avoiding harsh acceleration. Seek qualified assistance as soon as possible.

Maintenance

Topping up the coolant

WARNINGS



Never remove the filler cap when the engine is hot - escaping steam or scalding water could cause

serious personal injury.



Avoid spilling antifreeze onto a hot engine - a fire may result.



Unscrew the filler cap slowly, allowing the pressure to escape before removing completely.

Top up with a mixture of 50% water and 50% antifreeze until the coolant is between the **MAX** and **MIN**.

Refit the filler cap and hand-tighten securely until one click is heard.

Antifreeze

WARNINGS



Antifreeze is poisonous and can be fatal if swallowed - keep containers sealed and out of the

reach of children. If accidental consumption is suspected, seek medical attention immediately.



If the fluid comes into contact with the skin or eyes, rinse immediately with plenty of water.

CAUTIONS



The use of non-approved antifreeze will have an adverse effect on the engine cooling system and therefore engine durability.



Antifreeze will damage painted surfaces; soak up any spillage with an absorbent cloth immediately and wash the area with a mixture of car shampoo and water.

Antifreeze contains important corrosion inhibitors. The antifreeze content of the coolant must be maintained at 50% \pm 5% all year round (not just in cold conditions). To ensure that the anti-corrosion properties of the coolant are retained, the antifreeze content should be checked once a year and completely renewed every ten years, regardless of distance travelled. Failure to do so may cause corrosion of the radiator and engine components.

The specific gravity of a 50% antifreeze solution at 20°C (68°F) is 1.068 and protects against frost down to -40°C (-40°F).

Use antifreeze to specification WSS M97B44, coloured orange, Extended Life Coolant.

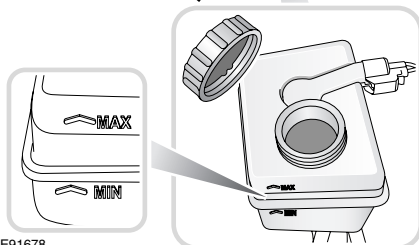
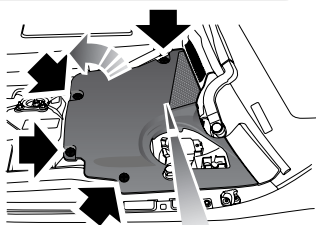
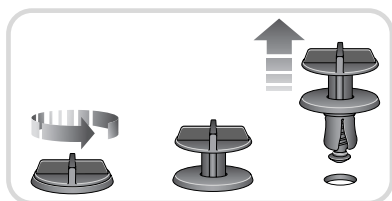
Maintenance

BRAKE FLUID CHECK

WARNING



The fluid level will drop as the brake pads wear. If the level is very low the brake warning indicator will illuminate and a message **BRAKE FLUID LOW** will be displayed. Seek qualified assistance immediately. Do not drive the vehicle until the cause is rectified as driving under such conditions could result in extended stopping distances or complete brake failure.



E91678

CAUTION



While handling brake fluid, take extreme care; brake fluid can damage the vehicle paintwork.

Always use fresh, clean fluid from a new container. Never introduce used brake fluid into the system.

The fluid is visible through the translucent casing of the reservoir and must be maintained at the **MAX** mark.

Topping up:

1. Remove the reservoir top cover
2. Clean the reservoir and cap thoroughly with a lint-free cloth to ensure that no foreign matter enters the reservoir.
3. Unscrew the filler cap and top up to the **MAX** level using brake fluid to specification **Shell DOT 4 ESL** or low viscosity DOT 4 brake fluid that meets ISO 4925 class 6 specification. Only fluid of this type and standard may be used.
4. Refit the filler cap securely and refit the cover.

Pedal free travel: The brake pedal free travel is 12.0 mm (0.47 inches).

Maintenance

POWER STEERING FLUID CHECK

WARNINGS



Power steering fluid is highly toxic. Keep containers sealed and out of reach of children. If accidental consumption of fluid is suspected, seek medical attention immediately.



If the fluid comes into contact with the skin or eyes, rinse immediately with plenty of water.

Checking the fluid level

CAUTIONS



The engine must not be started if the fluid level has dropped below the **MIN** mark. Severe damage to the steering pump could result.



Seek qualified assistance immediately if there is a noticeable drop in the fluid level. Severe damage to the steering pump could result.



If fluid loss is slow, the reservoir may be topped-up to the upper level mark to enable the vehicle to be driven to a repair facility for examination. However, it is recommended that you seek qualified assistance before driving the vehicle.

Check the fluid level when the engine is cold and the vehicle is on a flat, level surface.

The fluid level should be between the **MIN** and the **MAX** marks.

Topping up the fluid

CAUTIONS



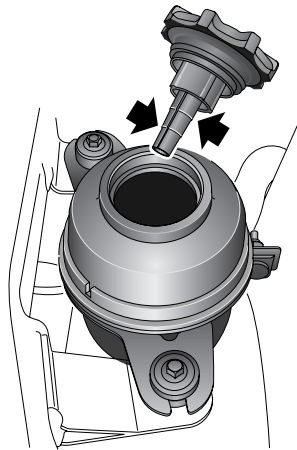
It is imperative that the power steering system does not become contaminated in any way. Always use new fluid and clean the area around the reservoir neck both before and after topping up. Never return drained fluid to the system.



Power steering fluid will damage painted surfaces. Soak up any spillage with an absorbent cloth immediately and wash the area with a mixture of car shampoo and water.



Do not fill the reservoir above the **MAX** mark.



E91679

1. Wipe clean and remove the filler cap from the reservoir; take great care to prevent any foreign matter from entering.
2. Check that the fluid level is between the marks on the reservoir dipstick.

Maintenance

3. If necessary, top-up with DEXRON III power steering fluid. Do not overfill.
4. Refit the filler cap.

WASHER FLUID CHECK

WARNINGS



Some screen washer products are toxic and in concentrated form is flammable, particularly if high or undiluted concentrations are exposed to sparking. Do not allow screen washer fluid to come into contact with naked flames or sources of ignition.



Under no circumstances must cooling system antifreeze be used, as this will damage the paintwork.



If the vehicle is operated in temperatures below 4°C (40°F), use a washer fluid with frost protection. In cold weather, failure to use a washer fluid with frost protection, could result in impaired vision and increase the risk of a vehicle crash.

CAUTIONS



Do not use an antifreeze or vinegar/water solution in the washer reservoir - antifreeze will damage painted surfaces, while vinegar can damage the windscreen washer pump.



Body panels may suffer discolouration as a result of screen washer fluid spillage. Take care to avoid spillage, particularly if an undiluted or high concentration is being used. If spillage occurs, wash the affected area immediately with water.

The washer reservoir contains fluid for the windscreen washers and the headlamp powerwash system.

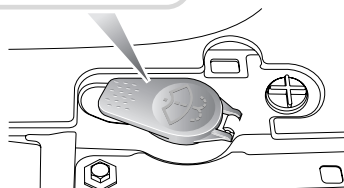
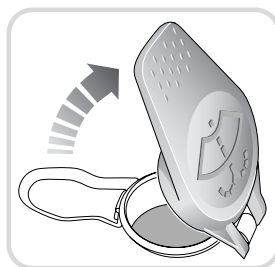
Fill with Jaguar Windscreen Washer Fluid diluted with clean water as specified in the instructions on the bottle. Do not overfill.

Using a non-approved fluid may adversely affect the wiper blade rubber, resulting in ineffectual and noisy wiping.

Check and top-up the reservoir level at least every week. Always top-up with screen washer fluid to prevent freezing.

Operate the washer switches periodically to check that the nozzles are clear and properly directed.

Topping up the fluid



E91676

1. Clean cap before removing to prevent dirt from entering the reservoir.
2. Remove filler cap.
3. Top-up until the fluid is visible in the filler neck.
4. Replace filler cap.

Maintenance

TECHNICAL SPECIFICATIONS

Lubricants and fluids

Part	Variant	Specification
Engine oil	All vehicles	SAE 5W-30 meeting Jaguar specification WSS M2C913-B.
Power steering fluid	All vehicles	DEXRON III
Brake fluid	All vehicles	Shell DOT4 ESL. If Shell DOT4 ESL is not available seek advice from your Jaguar Dealer/Authorised Repairer.
Screen washer	All vehicles	Screen wash with frost protection
Coolant	All vehicles	50% mixture antifreeze to specification WSS M97B44 (coloured orange Extended Life Coolant) and water.

Capacities

Item	Variant	Capacity
Fuel tank	All vehicles	71.1 litres (15.6 gallons)
Fill capacity (when the fuel guage indicates empty)	All vehicles	65.1 litres (14.3 gallons)
Reserve capacity (when the fuel guage indicates empty)	All vehicles	6.0 litres 91.3 gallons)
Engine oil refill and filter change	All vehicles	7.0 litres (12.3 pints)
Windscreen and headlamp washer reservoir	V8 4.2 and 3.5 litre normally aspirated engines	6.3 litres (11.1 pints)
	V8 4.2 litre supercharged engine	6.6 litres (11.6 pints)
Cooling system, including reservoir and climate control	V8 4.2 and 3.5 litre normally aspirated engines	10.4 litres (18.3 pints)
	V8 4.2 litre supercharged engine	10.0 litres (17.6 pints)

Fuses

CHANGING A FUSE

CAUTIONS

- ❗ Always turn off the ignition system and the affected electrical circuit before replacing a fuse.
- ❗ Fit Jaguar approved replacement fuses of the same rating and type, or fuses of matching specification.

Using an incorrect fuse may result in damage to the vehicle's electrical system, and can result in a fire.

- ❗ If the replacement fuse blows after installation the system should be checked by your Jaguar Dealer/Authorised Repairer.

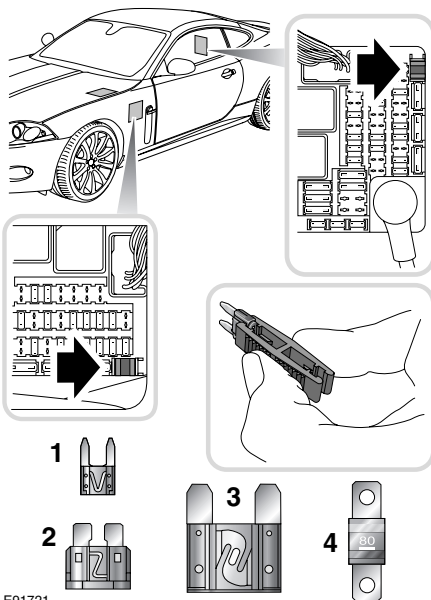
- ❗ No attempt should be made to repair a fuse that has blown.

Note: Jaguar recommend that owners do not remove or replace relays. It is recommended that you seek qualified assistance in the event of a relay failure.

Always switch off the ignition, and the affected electrical circuit before replacing a fuse.

Fuse failure is identified by an inoperative circuit.

A special tool for removing and replacing Mini and ATO-fuses is provided in the passenger and rear seat compartment fuse boxes, together with spare fuses.



E91721

Four types of fuses are fitted in the fuse boxes:

1. Mini-type
2. ATO-type
3. Maxi-type
4. Midi-type.

If a spare fuse is used, renew it with a fuse of the same amperage rating.

Push the tool onto the suspect fuse and withdraw it.

If the wire in the fuse is broken, the fuse has blown.

Fit a new fuse using the tool.

Fuses

Checking or renewing a blown fuse

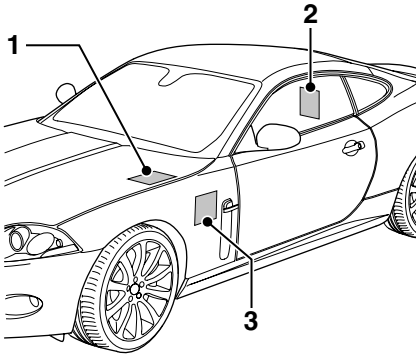
Fuse types **3** and **4** and relays should be replaced only by qualified assistance.

Fuses are colour coded according to the amperage and the rating is also marked on each fuse.

FUSE BOX LOCATIONS

CAUTION

! When a fuse box lid is removed, take care to protect the box from moisture, and refit the lid at the earliest opportunity.



E91723

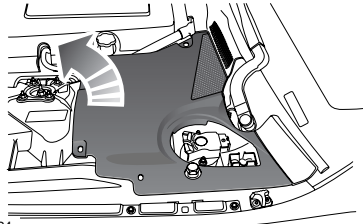
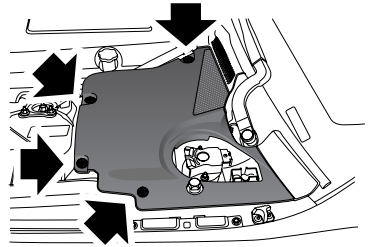
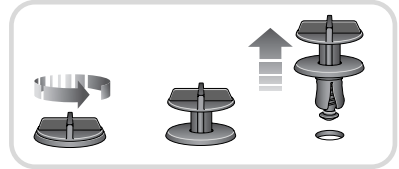
There are three separate fuse boxes fitted to the vehicle, each one containing fuses protecting a different group of circuits.

They are located in:

1. The engine compartment
2. The rear seat compartment
3. The passenger compartment.

Engine compartment fuse box

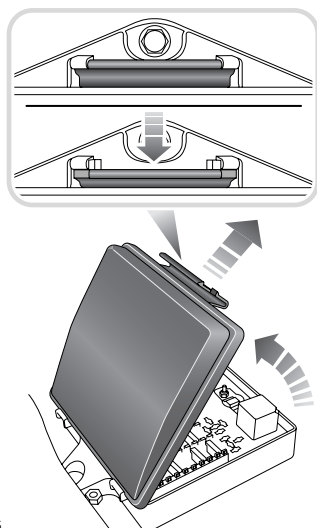
The fuse box is located in the engine compartment on the left-hand side underneath the engine compartment left-hand cover.



E91724

Remove the engine compartment left-hand cover.

Fuses

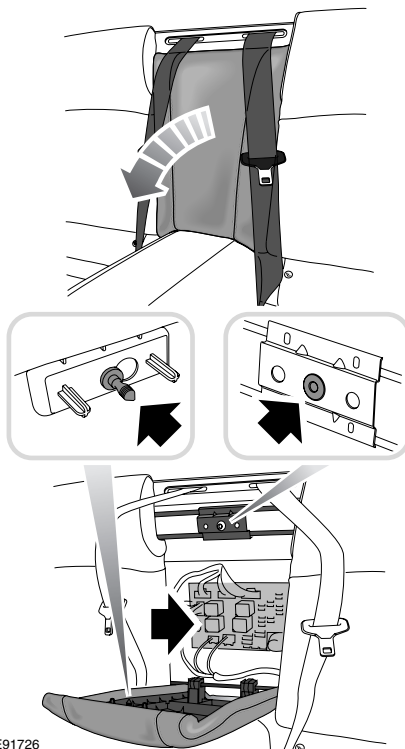


E91725

Remove the fuse box lid by pressing the retaining lugs and lifting.

When refitting, press the fuse box lid in the area of the retaining lugs until the lid engages.

Rear seat compartment fuse box



E91726

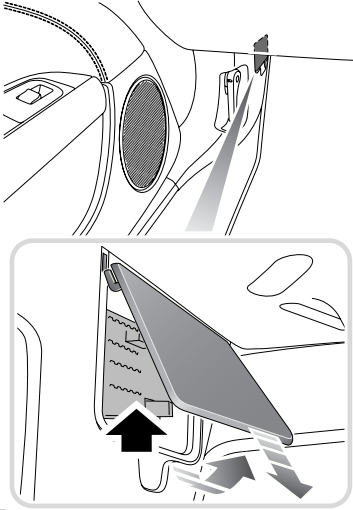
A fuse box is located behind the rear seat centre section.

To remove the rear seat centre section, grasp the sides of the section and pull sharply.

When refitting the rear seat centre section ensure that the securing and locating pegs are aligned with their respective holes before pushing the centre section fully home.

Fuses

Passenger compartment fuse box



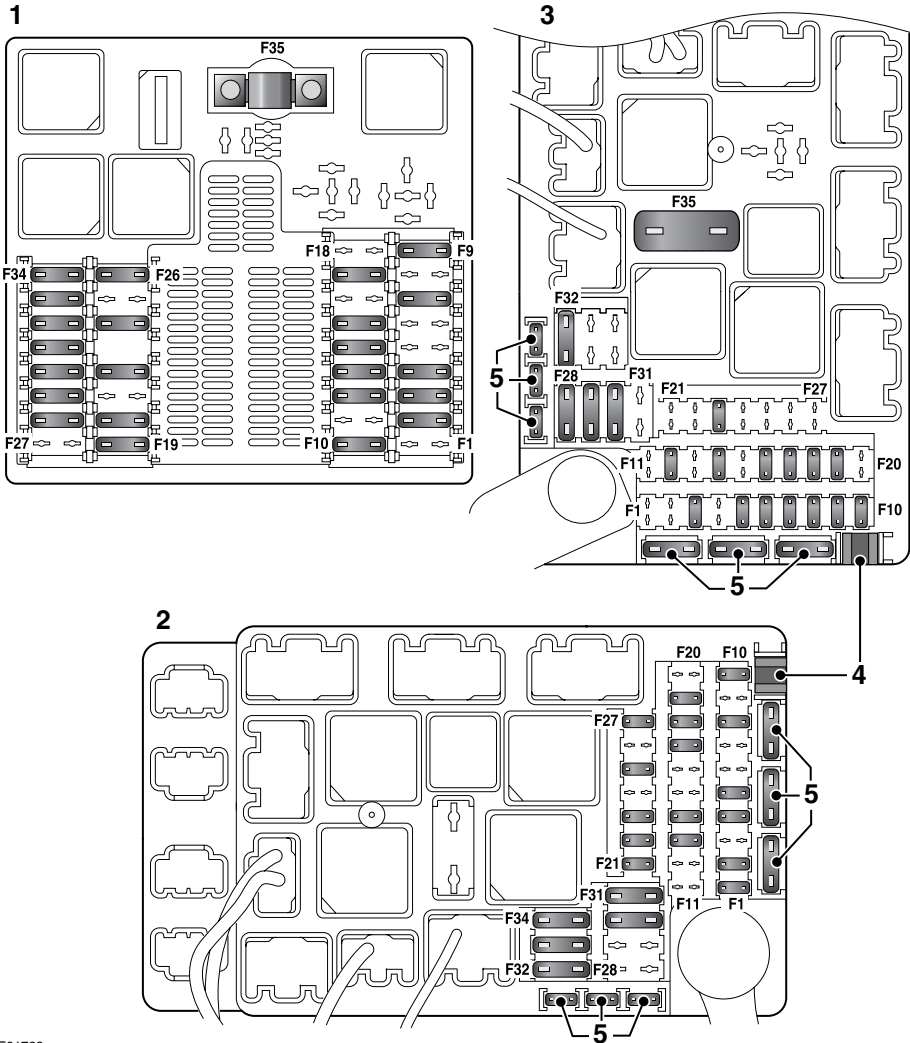
E91727

The passenger compartment fuse box is located under the left-hand side trim panel in the footwell.

To access the fuse box remove the left-hand side trim panel fuse box cover.

Fuses

Fuse and relay positions



E91728

1. Engine compartment fuse box.
2. Rear seat compartment fuse box.
3. Passenger compartment fuse box.
4. Fuse removal tool.
5. Spare fuses.

Fuses

FUSE SPECIFICATION CHART

Engine compartment fuse box 1

- fuses

Fuse No	Rating (amps)	Fuse Colour	Circuit
F1			Not used.
F2	10A	Red	Throttle motor.
F3	5A	Tan	DSC ECM; EMS ECM.
F4	30A	Green	Powerwash pump.
F5			Not used.
F6			Not used.
F7	40A	Orange	Front left screen heater.
F8			Not used.
F9	15A	Blue	Cigar lighter heater element.
F10	15A	Blue	Horn.
F11			Not used.
F12	10A	Red	2 x variable valve timing actuator (A and B), EMS control module.
F13	10A	Red	Injectors.
F14	10A	Red	Exhaust gas recirculation valve, radiator fan controller, purge valve, mass air flow meter (N/A), diagnostic monitor tank leakage, second air injection vacuum solenoid.
F15	10A	Red	ACM/FLS.
F16			Not used.
F17	15A	Blue	TCM.
F18			Not used.
F19	30A	Green	Starter.
F20	40A	Orange	DSC pump.
F21			Not used.
F22	20A	Yellow	DSC valves.
F23			Not used.
F24	15A	Blue	Intercooler water pump.
F25			Not used.
F26	40A	Orange	Wiper motor.

Fuses

Fuse No	Rating (amps)	Fuse Colour	Circuit
F27			Not used.
F28	5A	Tan	Cluster (VAPS Power), headlamp level/Adaptive front lighting ECM.
F29	15A	Blue	Active front lighting (LH).
F30	15A	Blue	Ignition coils plus 6.8 MF capacitor.
F31	15A	Blue	Active front lighting (RH).
F32	40A	Orange	Front right screen heater.
F33	30A	Green	UHEGO - A bank heaters.
F34	30A	Green	UHEGO - B bank heaters.
F35	80A		Radiator fan.

Rear seat compartment fuse

box 2 - fuses

Fuse No	Rating (amps)	Fuse Colour	Circuit
F1	25A	Clear	Passenger door zone ECM.
F2	5A	Tan	Tyre Pressure Monitoring System.
F3			Not used.
F4	10A	Red	Power rod aerial.
F5	5A	Tan	Alternator sense.
F6			Not used.
F7			Not used.
F8	5A	Tan	Power roof logic.
F9			Not used.
F10	10A	Red	Accessory connector B+.
F11			Not used.
F12			Not used.
F13	25A	Clear	Driver's door zone ECM.
F14	10A	Red	Navigation, VICS, power.
F15			Not used.
F16			Not used.
F17	10A	Red	Restraints control module.

Fuses

Fuse No	Rating (amps)	Fuse Colour	Circuit
F18	30A	Green	EPB.
F19	10A	Red	S/C active exhaust.
F20			Not used.
F21	15A	Blue	IHU, supply.
F22	5A	Tan	Phone, VEMS, power.
F23	30A	Green	Heated rear screen.
F24			Not used.
F25	10A	Red	TV, DVD, SDARS, power.
F26			Not used.
F27	10A	Red	Pedestrian impact sensor.
F28			Not used.
F29			Not used.
F30	40A	Orange	Power roof rear quarters.
F31	30A	Green	Power Amp supply.
F32	40A	Orange	Power roof supply.
F33	30A	Green	Fuel pump module N/A or S/C.
F34	40A	Orange	Blower motor.

Passenger compartment fuse box 3 - fuses

Fuse No	Rating (amps)	Fuse Colour	Circuit
F1			Not used.
F2			Not used.
F3	20A	Yellow	Keyless vehicle module.
F4			Not used.
F5	5A	Tan	Instrument panel logic.
F6	15A	Blue	Air conditioning.
F7	5A	Tan	Passive Anti-Theft System (PATS) transmitter/receiver.
F8	5A	Tan	Footbrake switch.
F9	5A	Tan	Driver's mirror switch, passenger seat memory switch, passenger seat module.

Fuses

Fuse No	Rating (amps)	Fuse Colour	Circuit
F10	15A	Blue	Instrument panel (column adjust).
F11			Not used.
F12	10A	Red	Interior lamp switched power comprises - map, courtesy, footwell, sun visor, glove box. In-car aspirator.
F13			Not used.
F14	15A	Blue	Adaptive dynamic ride control power.
F15			Not used.
F16	15A	Blue	Front power point, premium audio amplifier, cooling fan.
F17	5A	Tan	OBD II.
F18	5A	Tan	Dual sun load, driver's seat module, Singapore Road Pricing, driver's seat memory.
F19	5A	Tan	RF receiver.
F20			Not used.
F21			Not used.
F22			Not used.
F23	10A	Red	Cabin accessory power.
F24			Not used.
F25			Not used.
F26			Not used.
F27			Not used.
F28	30A	Green	Passenger seat motor (2).
F29	30A	Green	Passenger seat motor (1).
F30	30A	Green	Driver's seat module (1).
F31			Not used.
F32	30A	Green	Driver's seat module (2).
F33			Not used.
F34			Not used.
F35	40A	Orange	SAI Maxi fuse.

Technical specifications

WEIGHTS

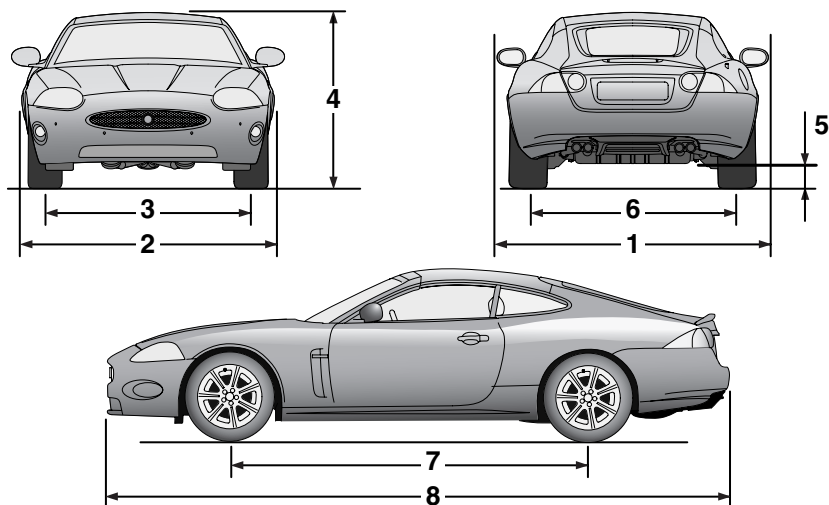
V8 4.2 and 3.5 litre normally aspirated engines

	Coupe		Convertible	
	kg	lb	kg	lb
kerb weight (no options fitted)	1595	3516	1635	3605
Front axle kerb weight	850	1874	852	1879
Rear axle kerb weight	745	1642	783	1726
Gross Vehicle Weight (GVW)	2035	4486	2075	4575
Gross front axle weight	1015	2238	1020	2249
gross rear axle weight	1090	2403	1125	2480
Maximum recommended luggage compartment load with passenger and driver	28	62	28	62

Note: Loads greater than 28 kg (62 lb) may be carried in the luggage compartment provided the maximum technically permissible axle weights shown on the vehicle identification plate are not exceeded and the tyres are inflated to the normal pressures given on the label fixed to the end of the left-hand door.

Technical specifications

DIMENSIONS



E91982

Item	Description	mm	Inches
1	Overall width, mirrors extended	2070	81.5
2	Overall width, mirrors folded	1892	74.5
2	Overall width, mirrors folded, rear arch extensions fitted	1912	75.3
3	Track - Front (maximum)	1560	61.0
4	Overall height at GVW (nominal) - Coupe	1287	50.6
4	Overall height at GVW (nominal) - Convertible	1294	51.0
5	Minimum ground clearance (at GVW)	100	4.0
6	Track - rear (maximum)	1608	63.3
7	Wheelbase	2752	108
8	Overall length	4791	187.0
-	Turning circle (kerb to kerb)	10.97 m	37.4 ft

Technical specifications

Wheel alignment data (China only)

Wheel alignment - Front

	Left-hand side		Right-hand side	
	Min	Max	Min	Max
Camber	-1° 09'	+0° 21'	-1° 21'	+0° 09'
Castor	+6° 02'	+7° 32'	+6° 02'	+7° 32'
		Min	Max	
Toe (total)		-0° 02'	+0° 22'	

Wheel alignment - Rear

	Left-hand side		Right-hand side	
	Min	Max	Min	Max
Camber	-1° 20'	+0° 10'	-1° 20'	+0° 10'
Castor	Non-adjustable		Non-adjustable	
		Min	Max	
Toe (total)		+0° 03'	+0° 27'	

Note: All above figures are with the vehicle at kerb weight (full fuel, full fluids, no occupants or luggage).

Note: Tyre pressures must be inflated to normal pressure settings.