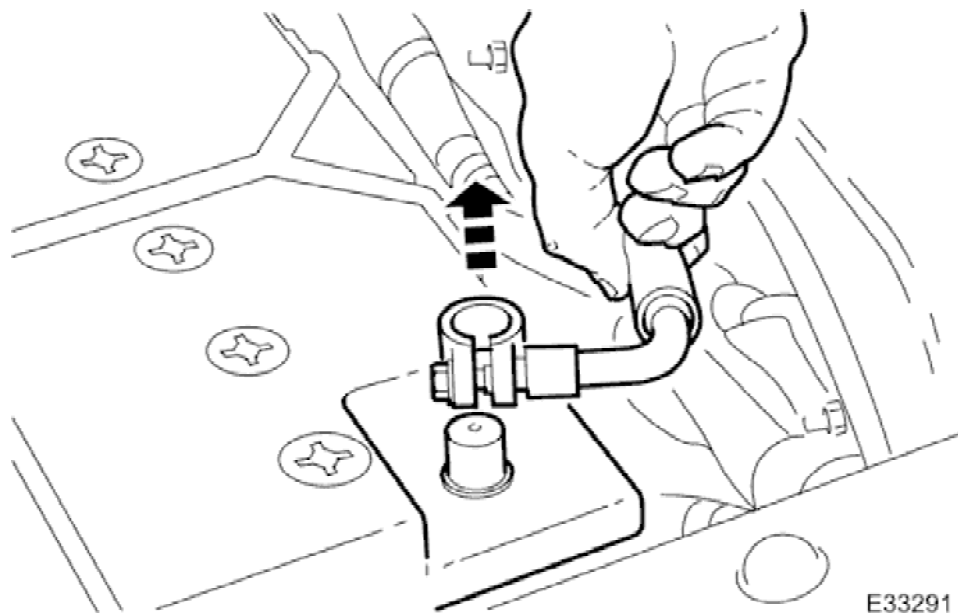


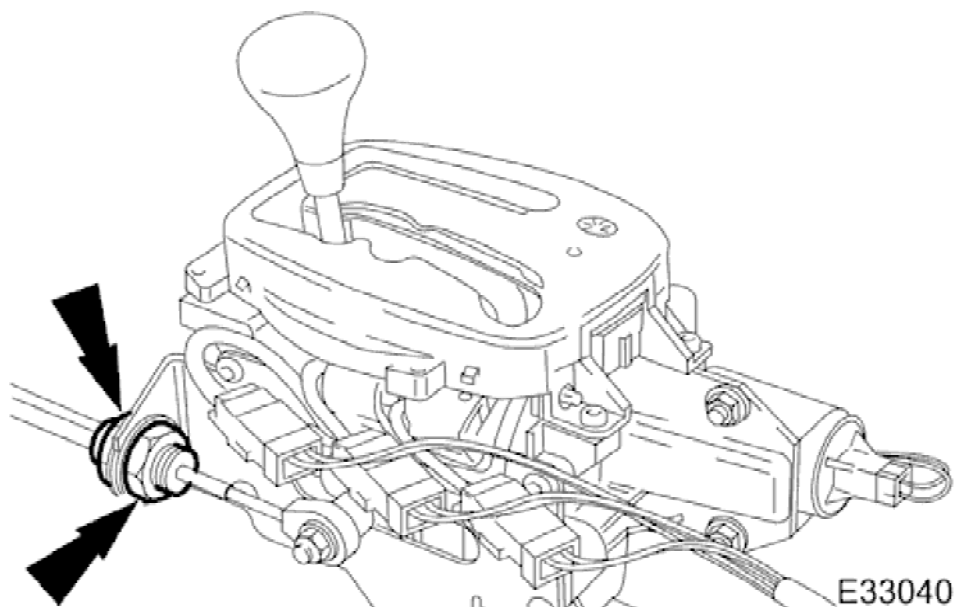
## Selector Lever Cable Adjustment

1. Open the driver's door, or both doors if necessary, to allow the side glass to drop. Ensure that the doors remain open until after the battery has been disconnected.



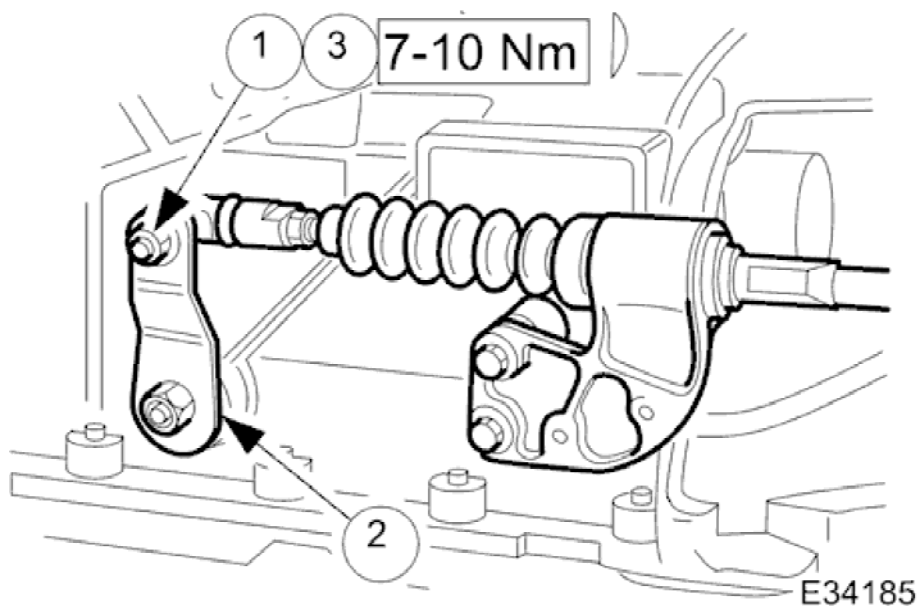
E33291

2. Disconnect battery ground cable.
  - Remove the battery cover.
3. Position the shift to N.
4. Remove the J-gate surround, Section <<501-05>>.
5. Remove the console finisher veneer panel, Section <<501-12>>.
6. Remove the center console assembly, Section <<501-12>>.



7. Slacken the selector cable locking nuts away from the abutment.

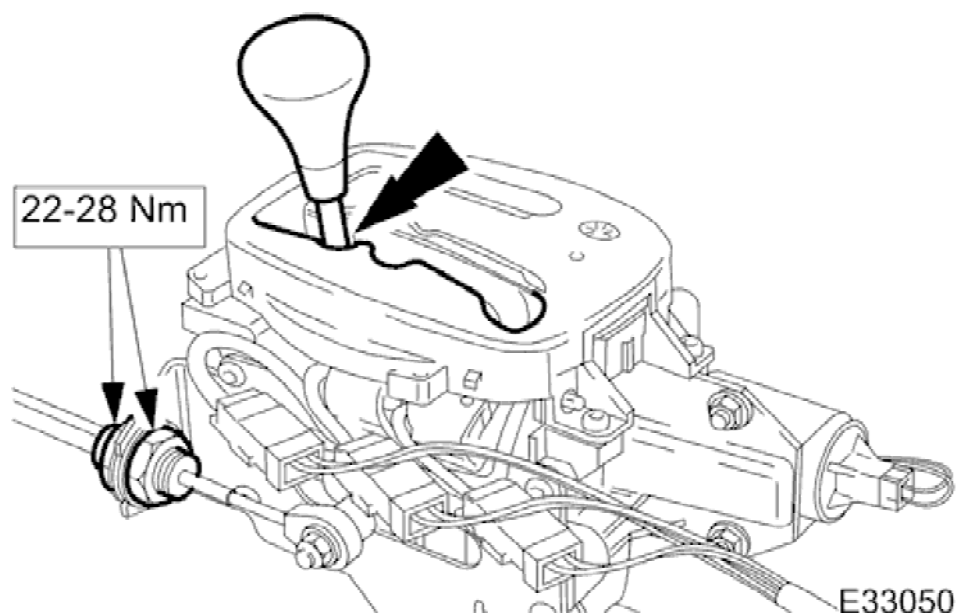
8. Raise the vehicle for access.



9. Verify the transmission selector position ( N )

1. At the transmission, detach the inner cable from the selector lever.
2. With the lever moved fully rearward, push the lever forward two detents to achieve N.
3. Reconnect the inner cable.

10. From inside the vehicle.



11. **NOTE:**

When setting the selector cable, ensure that the transmission selector does not move from the N position.

Adjust the selector cable.

1. Position the shift in the N detent
2. Adjust the nuts to lock against the bracket without moving the set position of either the shift lever or the selector lever.
3. Tighten the locknuts to the specified torque figure
4. Verify the N setting.

12. Further installation is the reverse of the removal procedure.

13. Perform the Battery Reconnection Procedure described in Operation <<86.15.15>>.