

Window regulator swap out - by RaceDiagnostics

My driver's window had been playing up for a while, clunking when wound to the top. The drivers door regulator will take a pounding over its lifetime as it is actuated every time the driver door is opened.

In order to find a good second hand replacement for my RHD car I sourced one from a USA LHD car.

Stripped off the door card as per Rev Sam's video.



Then wound the glass to this position and removed the earth from the battery.



Window regulator swap out - by RaceDiagnostics

Next you have to remove the retaining clips from two of these on the bottom rail of the regulator. It's worth buying a couple of new clips in advance as the old clips may break.



They are here in the door.



Window regulator swap out - by RaceDiagnostics



Next you need to lever out the arms from the plastic clips, I used a small prise bar.



I then lifted the glass to the fully up position and held it in place with a strip of tape.

Window regulator swap out - by RaceDiagnostics



JTIS says that it is important to mark the position of this nut before removal to ensure refitting is done correctly, looks like mine has been all over the place.



Now you need to remove the electrical plug from the motor.

Window regulator swap out - by RaceDiagnostics



Release the locking tab by pushing here.



Release the four screws holding the regulator in place.

Window regulator swap out - by RaceDiagnostics



Then a bit of manoeuvring to get it out like this.



Window regulator swap out - by RaceDiagnostics

So here is the problem.

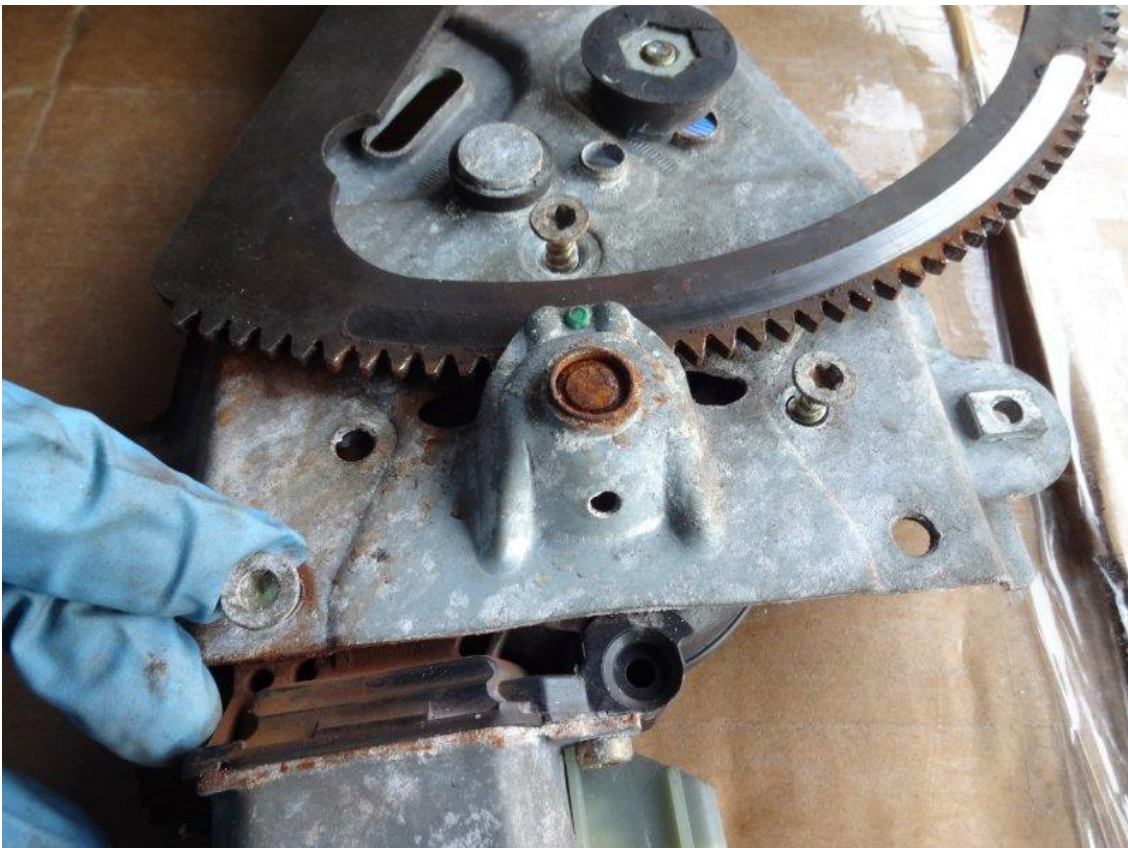


The new and the old.

Window regulator swap out - by RaceDiagnostics



I needed to reuse my old motor. It is released by these three screws.



Window regulator swap out - by RaceDiagnostics

But bad news, my motor gear is trashed.



So now ordered a new one off ebay (from a Range Rover), hope its teeth are in good condition. It should be less worn as the Range Rover door is not frameless like the XK8.

Part number is - Bosch 0130821317

Since I will now have to wait till next weekend to finish the job I decided to remove the glass to inspect the runners etc.

Remove the screw that retains the top of the runner.

Window regulator swap out - by RaceDiagnostics



...and then the two torx screws from the bottom runner adjuster.



Window regulator swap out - by RaceDiagnostics

The runner can then be worked out.



Lower the glass and then remove the screw holding the retaining bracket.

Window regulator swap out - by RaceDiagnostics



Remove the inner and outer weather strips on the top of the door.



Window regulator swap out - by RaceDiagnostics

The glass can then be lifted out at this angle.



Close inspection of the runner guides shows they are ok but I will need to search for pics on the web to confirm this.

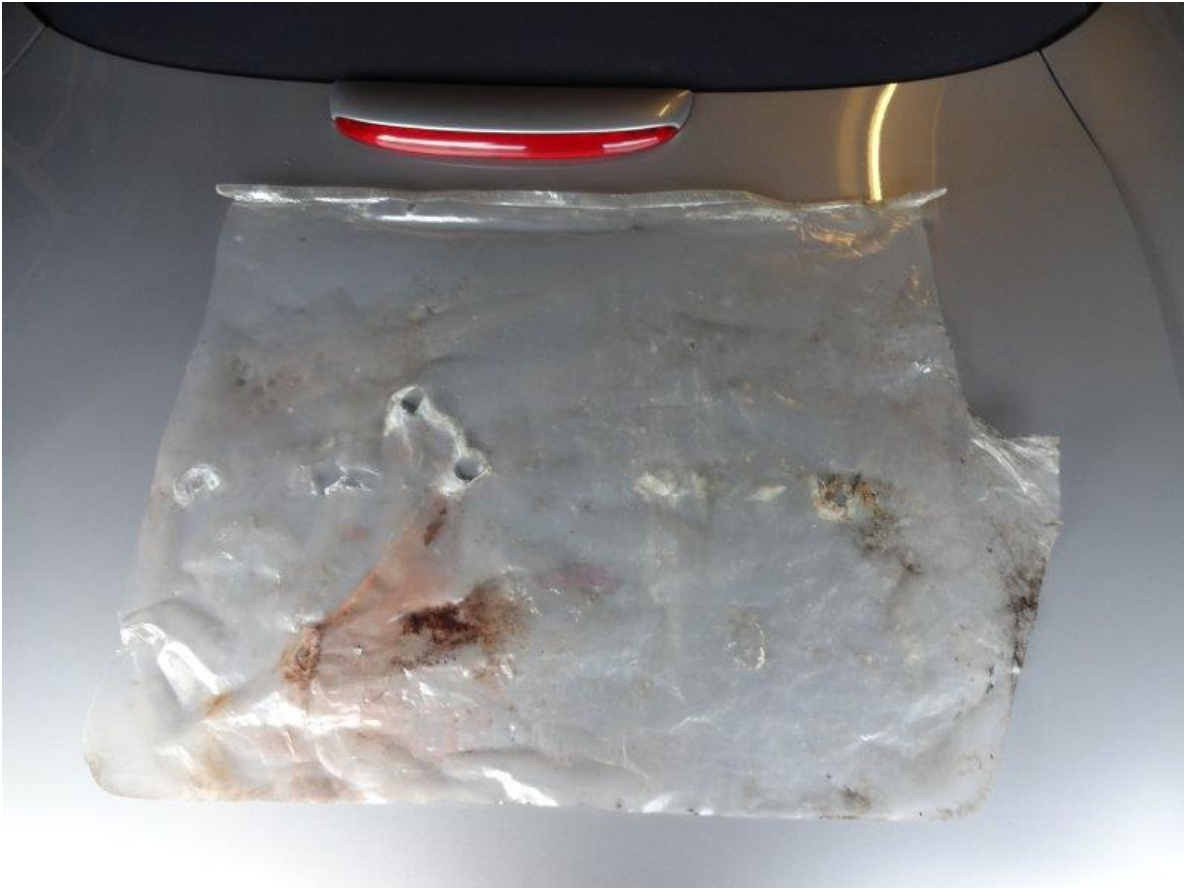


Window regulator swap out - by RaceDiagnostics



Now is also a good time to replace the inner weather sheet.

Window regulator swap out - by RaceDiagnostics



More next week when I get the replacement motor.
