

Michael Fang's Weblog

Miko's Weblog

« BMW Ultimate Drive | Main | Hirschmann Auto... »

[All](#) | [Java](#) | [Personal](#) | [Sun](#)

Friday Jun 20, 2008

CD Changer Repair

The CD Changer installed in the glove compartment of my car has ceased to function for several years already (it failed to recognize CDs in the 6 disc magazine). Today, after a few google searches, I found a discussion forum that has just the [information](#) I was looking for, a potential fix for the problem a lot of people have experienced in their Alpine CD changers. So, I decided to give it a try! For better or for worse.

First, I removed the changer from the glove compartment. That was a fairly easy task of unplugging 2 wiring connectors, since my changer wasn't properly secured to the glove compartment (missing mounting bracket/screws).

Now, with the changer sitting on my desk, remove the screws on the side of the changer as shown below.



Then, pop out the plastic clips to remove the front panel.

About This Weblog

Miko blogs about java, cars, photography, investment.

Archives

« **September 2010**

Sun	Mon	Tue	Wed	Thu	Fri	Sat
			1	2	3	4
5	6	7	8	9	10	11
12	13	14	15	16	17	18
19	20	21	22	23	24	25
26	27	28	29	30		

[Today](#)

Feeds

[All](#)
[/Java](#)
[/Personal](#)
[/Sun](#)
[Comments](#)

Search

Bookmarks

[blogs.sun.com](#)
[java.com](#)
[java.net](#)
[opensolaris.org](#)

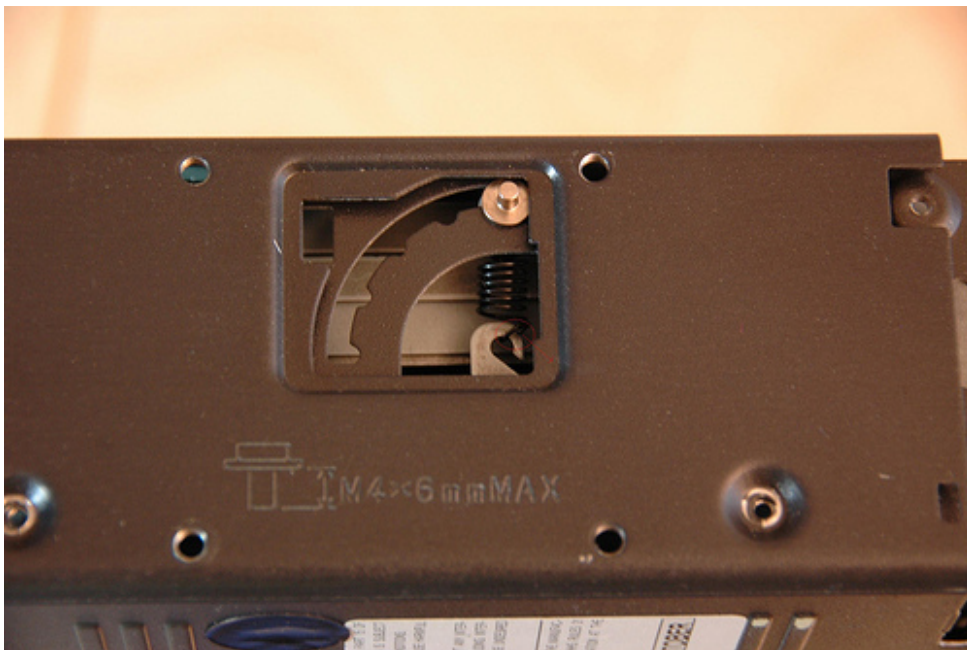
Other Blog Links

[blogs.sun.com](#)
[Weblog](#)
[Login](#)

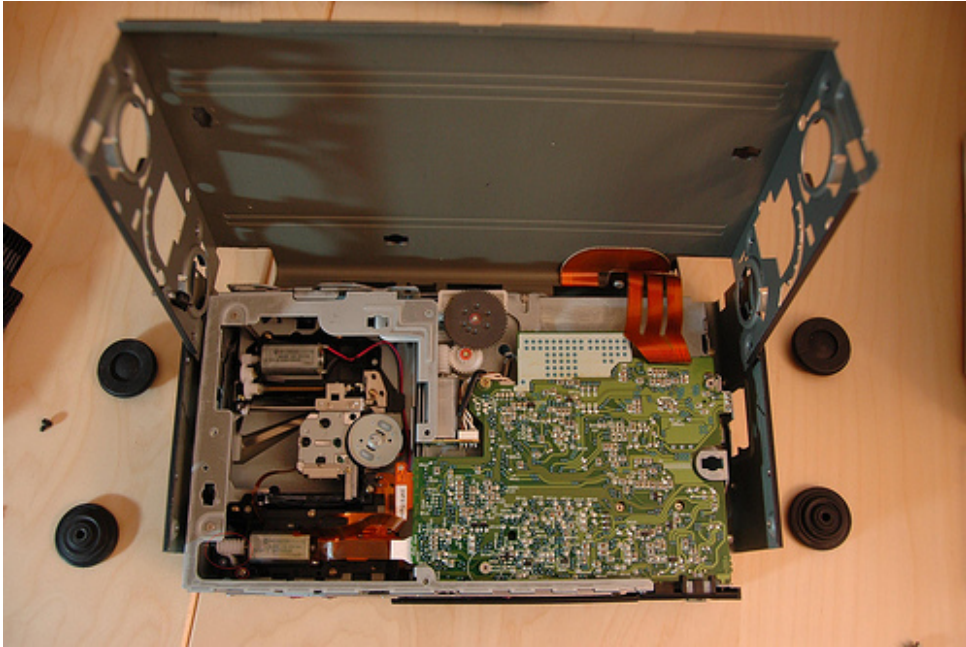
Today's Page Hits: 8



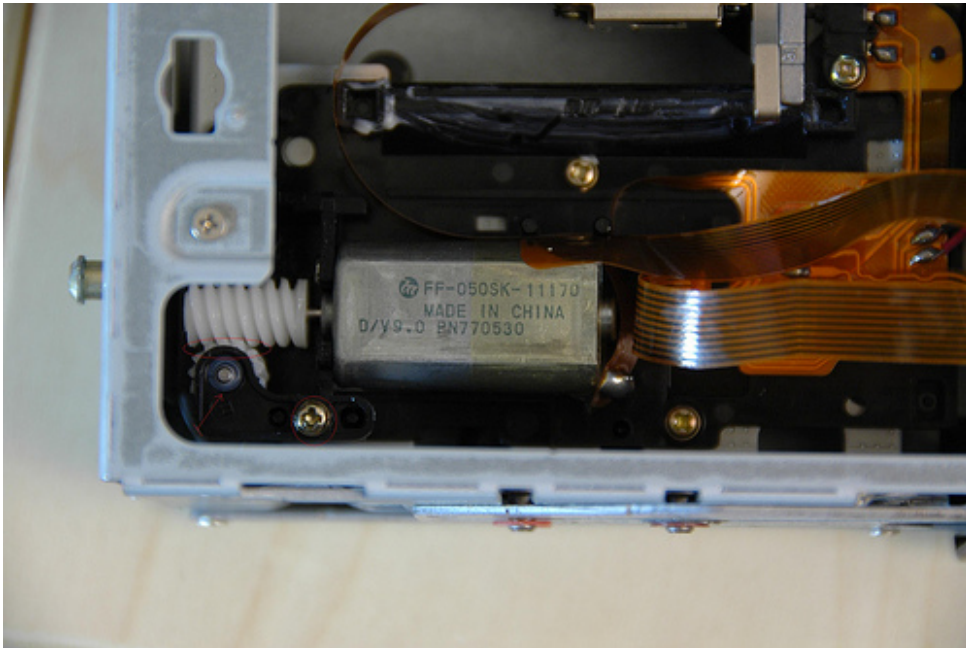
Then, remove the springs that suspends the internal casing for anti-vibration using a long nose plier.



Then, remove the 4 rubber bushings by hand, and open up the case as shown below.



Now, the actual repair/adjustment. On the lower left hand side of the picture below, you will see this worm/wheel drive gear. There was a small gap between them, causing the worm to not driving the gear, and therefore, failed to pick up the CD.



To adjust it, I first loosen the screw that's holding the gear in place, using one screw driver to push it closer to the worm gear, while using another screw driver to tighten the screw. I used my hand to rotate the worm a little bit to test out the operation.

Then, I reversed the steps and closed up the case and place the changer back into

the car. It worked! Now, I can listen to CDs again :) All-in-all, it took about one hour of work, and saved myself about \$300 of repair bill.

Now, if I can find a way to repair the power antenna in the other car... part of the antenna was broken , so radio reception was extremely poor... I have found some exploded views of the parts, and hopefully I can take it apart and be able to order just the required parts, to save me another \$350 (or save me \$600 if I let my friendly dealer do the honor).

Posted at 06:06PM Jun 20, 2008 by miko in Personal | [Comments\[67\]](#) | [Permalink](#)

Comments:

Thanks, I followed your repair it worked great. You should really say the repair saved you \$300 on a new unit, I doubt a repair facility would charge that much to fix it.

Posted by **67.83.133.206** on June 21, 2008 at 05:03 PM PDT <#>

Thanks for your comment! Glad it worked out for you! For 1 hour of work, shops should probably charge \$75-150 based on their hourly rate. But, I found this place that repairs this particular changer for a flat rate of \$295 <http://www.carstereohelp.com>. Ouch! Maybe I can also make some money repairing changers :)

I purchased my changer for about \$350 5-6 years ago. Probably due to the weak dollar, the price of a new unit has climbed to about \$800 (from performanceproducts.com).

Posted by **miko** on June 21, 2008 at 06:29 PM PDT <#>

Hennie, not sure if this is similar to what you have, there is instruction to remove the cd holder on <http://www.benzworld.org/forums/w245-b-class/1356322-cd-holder-removal-info-required-3.html>

"For any one interested the CD holder is held in by plastic clips in square holes and to remove the holder all you have to do is push the 'lips' on the front 2 clips and the back ones 'Hinge' out of their location holes."

Here are the pictures (in case you are not a forum member and cannot view them)
http://farm4.static.flickr.com/3184/2605042798_9f97a15e82_o.jpg
http://farm4.static.flickr.com/3220/2605042862_d09afb7a8c_o.jpg

I am not sure how to remove the cd changer itself. Supposedly, they are held by 4 screws on 2 brackets that look like this http://www.adelcom.net/MERCEDES_merc-brkt.htm.

If you don't mind paying \$2.99 there are instructions for many cars at <http://www.carstereohelp.com./stereoremoval.htm>. I am not related to this web site and don't have experience purchasing from them.

Posted by [miko](#) on June 23, 2008 at 11:17 AM PDT #

I am having a VERY SIMILAR problem with the same model cd changer, as it doesn't seem to be recognizing the cd's, but with mine each cd is being loaded and returned back to the magazine until all 6 have gone through. Then it stops and altogether and doesn't run through them again. It looks like the the gears that move the (laser track?) are moving but the tracking mechanism doesn't move back and forth. Obviously I don't know ANYTHING about electronics but after reading these posts I do know that I'm not having the same problem with the same worm gear. Any help would be GREATLY APPRECIATED ! b/c I've HAD IT with this and I'm sure it's an easy fix for anyone out there reading this :)

Thanks!

Posted by [Jody](#) on June 27, 2008 at 01:03 PM PDT #

Jody, you might be having the same problem as I did. I failed to mention, for me, each cd was being loaded and returned back, and at the end, it displayed "magazine empty" (or something like that). Not sure if you also have the "magazine empty" message. If you did, then the problem could be the same. Hope it helps!

-miko

Posted by [miko](#) on June 27, 2008 at 03:15 PM PDT #

THANK YOU for replying! After it runs through all 6 disks it says Disk 0 Track 0. But that worm/wheel drive gear is aligned and functioning as it should, it just looks like the other gears aren't working properly (where that one piece slides back and forth) It's not a worm/wheel drive gear, but looks like 3 'regular' gears lined up next to each other. (sorry for this vague description!!) I've been on the internet for hours and your site is the very closest I've come to my problem. Thanks for your input and time

Posted by **Jody** on June 27, 2008 at 04:45 PM PDT #

You are welcome Jody! I wish I could help you more, but I only know what I know :p

Posted by **miko** on July 01, 2008 at 01:40 PM PDT #

Jody, did you manage to fix your problem? as it sounds like you have the same problem as me

Posted by **Graeme** on July 04, 2008 at 07:39 AM PDT #

Actually no. The tracking mechanism doesn't move the laser back and forth, although if I move the gears manually without the motor on, they do work and the laser lens moves back and forth like it should. The 3 gears that move the tracking mechanism don't move. So could it be that motor? It's hard for me to explain when I don't know anything about electronics! The 3rd gear, that's attached to the tracking mech. spins for a second, then stops, but the two that it's attached to (1 of them being attached to the motor) don't move at all. Maybe the way to fix it is to go on ebay and get a stereo with an iPod hook up!

Posted by **Jody** on July 04, 2008 at 12:08 PM PDT #

Actually no. The tracking mechanism doesn't move the laser back and forth, although if I move the gears manually without the motor on, they do work and the laser lens moves back and forth like it should. The 3 gears that move the tracking mechanism don't move. So could it be that motor? It's hard for me to explain when I don't know anything about electronics! The 3rd gear, that's attached to the tracking mech. spins for a second, then stops, but the two that it's attached to (1 of them being attached to the motor) don't move at all. Maybe the way to fix it is to go on ebay and get a stereo with an iPod hook up!

Posted by **Jody** on July 04, 2008 at 01:48 PM PDT #

I found some ipod interfaces available here:
<http://www.logjamelectronics.com/ipodproducts.html>. Some of the interfaces on this site allows you to connect alpine cd changer with mp3 capability.

Posted by **miko** on July 04, 2008 at 11:07 PM PDT #

well, there may be more similar products available from other companies. Please do some researches first to find the best suitable one for your application.

Posted by **miko** on July 04, 2008 at 11:08 PM PDT #

Hey thanks so much !!!

Posted by **Jody** on July 05, 2008 at 04:40 AM PDT #

I recently purchased a 99 C230 for my son. It was missing the cartridge for the cd changer, so I bought a new one thinking that would take care of it. The changer powers up and loads a cd when I insert the cartridge, but if I select cd at the head unit I get the message "NO CD Changer"

Any ideas?

Posted by **Phil** on August 02, 2008 at 01:57 PM PDT #

The changer for 99 is different than the one I have. Yours is mounted in the trunk and is probably made by Becker.

There are a few things to try:

1. Check out http://www.mercedesforum.com/m_56107/tm.htm
Disconnecting it from the power source and reconnecting it 1-5 minutes later. OR, unplug/replug the fuse corresponding to the cd changer/radio if you can find it. You may need to have your radio code in case it was requested after power disconnect (theft deterrant feature of the radio).
2. Try to disassemble the cd changer like what I did.
3. Take it to a audio store. Not sure how much they will charge to look at it. The stores around here ask for \$75-150 to look into it.
4. search ebay or craigslist for a used changer for around \$200-250,

A203 820 9089 MC3010

A002 820 7989 MC3198

and replace it. some info at

<http://www.benzworld.org/forums/w202-c-class/1176005-mc3010-cd-changer-install-99-c230k.html>

Good luck!

-miko

Posted by **miko** on August 03, 2008 at 04:03 PM PDT #

I have everything apart, on the workbench. Ready for reassembly. What is the trick to get the rubber bushing vibration isolators back on their posts? They won't go on! Everytime I think I have them on the right side correctly they pop off when I start to work on the left side!

Posted by **Randino** on August 14, 2008 at 06:30 PM PDT #

I remember the 4 rubber bushings were easily held by the small

metal posts. The part that took me the most time was to put back the little springs for the suspension. I used a long nose plier for that.

Posted by [miko](#) on August 14, 2008 at 07:34 PM PDT <#>

I have a 2004 clk 500 and i got no cd changer code on stereo. so I tried to eject cd magazine and it wouldn't come out. After playing around with it for a few minutes, I lost sound to my entire stereo. Any suggestions?

Posted by [michelle casper](#) on August 30, 2008 at 10:58 AM PDT <#>

Hi I disassembled my CD CHANGER slightly different case construction 2 plastic clips fell out on the interior of the case. I have only a guess as to where they should be on re-installation.

Please see the following post for photos of the missing clips.

<http://www.benzworld.org/forums/audio-telematics-forum/1399828-cd-changer-002-820-7989-re.html#post3079204>

If anyone has seen where these definitely go that would be great!

Posted by [David](#) on September 25, 2008 at 04:13 AM PDT <#>

Miko - looking at your pic of cd changer anti-vibration spring locations, is yours a horizontal (glove box setup) or a vertical (down in the trunk wheel well setup)????

I have messed with mine and not sure which way it goes

Thanks

Posted by [Tom Ard](#) on November 17, 2008 at 05:12 AM PST <#>

Tom - my changer is horizontal mounted in the glove box. I don't have the spec, but from the look of it, if you have vertical trunk mounted changer, you should set the spring on the other end. The springs are used as suspension and should look vertical when the changer is mounted. Hope it helps.

David - Becker and Alpine are 2 different part suppliers of OEM cd changers. Sorry I don't have those 2 clips on my changer.

Michelle - Sorry, I am not sure, but sounds like the connection to the stereo system was unplugged.

Posted by [miko](#) on November 17, 2008 at 10:24 AM PST <#>

I have a 2003 ML350 that keeps coming back "Mag Empty" with the mag full of CDs. I followed your instructions to the letter and when I reinstalled it it said "no cd player installed" so I powered

off the headunit and then back on and the cd started playing. I selected cd2 and nothing then cd3 nothing. It came back with the same error of "mag empty" again. The fact that it worked for a second tells me that it can be fixed but before I go through the process again, is there something I may have missed to that I can do to keep the thing going?

any help you can give would be appreciated.

Thanks
Craig H

Posted by **Craig H** on December 29, 2008 at 09:43 AM PST <#>

I bought a 99 Honda Accord and it had this unit in the trunk. It even came with CD's from that time frame. I followed your instructions and I could tell that the worm gear was the problem. I found it easier to install the rubber stabilizers on the unit before putting it back in the frame.

Posted by **Toby D.** on January 10, 2009 at 09:55 PM PST <#>

Miko:

Do you know where I can buy parts for a mc3198? I need to purchase the piece on the bottom of the mc3198 cd changer that reads "CLASS 1 LASER PRODUCT: This is where the female power and fiber optic slots are. One would plug the male power and fiber optic cables into it. Mine has rusted out and I need to purchase one. If someone has a mc3198 they are throwing away I will buy it for parts.

Thanks

Posted by **Gary** on January 22, 2009 at 09:24 PM PST <#>

I had same problem but in the process messed up the ribbon cable on the otherside connecting the circuit board to the smaller board that connects to the din.

Now i need help knowing which direction it should connect in and also where to get replacement ribbon cable.

Posted by **Taz** on February 16, 2009 at 01:28 PM PST <#>

Sorry I don't know where to get the parts... I was only following the directions to fix the issues after searching different forums.

Posted by **miko** on February 16, 2009 at 04:53 PM PST <#>

HI ALL, can anybody tell me if the fibre optics found in my boot should have a plug attached to them or do they just push into changer,i do not have a changer yet so have no way of solving this other than asking? AUDIO 10.....possible MC3010

Thanks Mick

Posted by **mick** on February 22, 2009 at 02:24 AM PST #

Hi mick, which "boot" are you referring to? If I remember correctly, when I purchased the CD changer, the fiber optics cable was another part I needed to purchase.

Posted by **miko** on February 22, 2009 at 12:01 PM PST #

I have re-aligned my worm gear twice, but now I've noticed that one of the teeth is missing from the smaller vertical gear. Anyone know where I can get one or even what this part number is??
Thanks

Posted by **Robert** on March 13, 2009 at 05:23 PM PDT #

Hi Robert:

I have a mc3198 that I bought from a local yard for parts. I have cannibalized it for parts. Which gear do you need. I may have one. E-mail me gejp48@gmail.com. If anyone else needs parts let me know.

Gary

Posted by **Gary** on March 15, 2009 at 08:00 AM PDT #

I did mine as guided, it works now. Only a minor recommendation that you may remove the suspend springs after removal of 4 rubber bushings, as the spring fall off themselves. The gap is so tiny not obvious at all, but it is there. Once you had all of steps done, it works.

Posted by **John** on March 20, 2009 at 07:34 PM PDT #

Does anyone know the wiring for the 3 pin plug that goes into the head unit, model MC3010 CD Changer, its the small jr connector.
John H

Posted by **John Hagopian PE** on April 06, 2009 at 07:48 AM PDT #

I had similar problems. I have a 1999 C280, and the CD changer right from the beginning was flaky. The problem started when the car was still under warranty and the CD changer would intermittently report NO CD in a slot when there was a CD. I took it to the MB dealer who did not find any problem with the CD. But last week, the CD quit completely always reporting "Magazine Empty". Today I finally had the nerve to take apart the CD changer following Miko's directions. I did not find anything obviously wrong. I moved all the gears by hand, especially the

big black one that loads and unloads the CD into the changer. I put it back together and it works like a charm.

I think there was some dirt in there that stopped the loading mechanism from moving.

In putting back the covers. I ruptured two of the rubber bushings that hold the changer in the assembly and some white gooey stuff came out. I hope it will not cause any problems.

I would like to thank Miko for the excellent directions. I guess I saved myself few hundred Dollars! Thanks Miko!

Georj

Posted by **Georj** on May 10, 2009 at 09:44 PM PDT #

Adjusted CD player as outlined. Now instead of "No Magazine" message I get "No CD Player" Followed suggestion to turn on radio, turned it off, remove power and fiber optic cable, turn on and off radio. Replaced both cables. Still get the same "No CD Player" message. Also pulled fuse and replaced it. Same problem.

Is there a way to reboot the radio? I have the code to reset it.

Suggestions appreciated.

Posted by **Suz** on May 14, 2009 at 08:47 AM PDT #

I can't thank you enough for this information. While the model CD player I have is slightly different than yours (mine is from a 1997 Jag XK8), the problem was the same and the model of the CD players were close enough that I figured i had nothing to lose.

The fix I needed was slightly different as well. Instead of having to get the wheel gear closer to the worm gear, the worm gear had actually slipped further away from the drive motor than it should have been. This caused the whole CD loading drive mechanism to lock up totally. A slight push with a small screwdriver on the end of the worm drive popped it back into place and the whole thing is working perfectly again.

But I would have never even gotten to that point (or even had the courage to try) without the information above. Thank you again and I know you just saved me at least \$600, if not more.

By the way, now my wife thinks I'm a genius. So let's keep this whole thing between us, 'k?

Posted by **Steve** on May 17, 2009 at 11:21 AM PDT #

Thanks Man, I used your guidelines to fix the stuck #2tray in my wife's BMW 328i. Also a 6 disc changer. Although I just removed the front plastic plate by pushing in the 4 tabs on the bottom and then removed the 4

top screws. The whole top then come be pulled off (no removal of spring or rubber dampers was necessary). Then turned the big black plastic gear which reinserted the tray . Then turned the smaller plastic gear behind the cartridge all the way until the cartridge popped out. Sweet.

Posted by **Mitchell** on July 15, 2009 at 12:02 AM PDT #

My alpine optic changer skips and does not play cds at a quality level. HELP!

Posted by **Curtis** on August 02, 2009 at 05:35 PM PDT #

My husband removed my CD Changer from my 2001 Jaguar XK8 and it was the same as yours. He followed the Instructions and plugged it in and what do you know, it worked. It hasn't worked for several month, I don't know how long because I haven't used it for awhile but when I went to use it I was surprised that it wasn't working. I just wanted to thank you for the information, it really helped and saved me time and money. Thanks again, Sandi

Posted by **Sandi** on August 23, 2009 at 08:09 PM PDT #

WOW!! I had the exact problem as others. It would not receive the discs, but just run through saying "empty mag". I would have never even thought to do my own electrical repair unless you had posted this! I was about to give up, but this is exactly what mine looked like. It took about 1.5 hours to do the repair, put it back, test it, realize it had broken again... take it apart and redo the repair, replace it - test it and TADA!!! SUCCESS! Finally off of my to do list. (And we thought it was because I put the magazine in wrong - even though the little tab at the end was completely broken off!) THANK YOU! THANK YOU! THANK YOU!

Posted by **Zoe** on August 25, 2009 at 07:59 PM PDT #

Hi I've got a :

ORIGINAL Mercedes 6 CD Changer, Connection type: Fibre optic, A 002 820 7989
Model No. MC3198

When in my car it switched between CD's with no problems plays fine but every time i turn the ignition the cartridge is ejected... has anyone else had this problem and any suggestions...

Many thanks

Posted by **richi** on September 04, 2009 at 02:59 AM PDT #

replacing suspension springs-----fabricate a 'J' shaped hook out of 3 or 4 inches of stiff wire--I used .032 diameter aircraft

stainless steel safety wire.---copper may be too soft--with 4 rubber isolators off--attach the spring first---attach the 'J' hook to the upper pin groove and keep it on the inside of the case---next have a small pair of flat nose pliers on hand---pull up lightly to keep tension on the spring --with left hand--when pin is exposed in the upper adjustment slot grab the tip fairly hard with the pliers---- LOWER WIRE AND REMOVE--insert pin into adjusting slot--'V'is position for vertical changer installation and 'H' is for horizontal installation--install isolators-

Posted by [ual inspector](#) on November 25, 2009 at 08:31 PM PST
#

I just found your blog. I'm wondering if my cd changer is having the same problem (glove compartment 6 disc changer in a 2003 c230k.. is that alpine?). For awhile now it might skip during songs, and not due to bumpiness of road or anything. Then it would be fine for another long while, then skip a lot or go silent for a good few seconds in the middle of songs. Now it seems to be having trouble recognizing there's CDs in the magazine. Does this sound like a similar problem? Should I try to take apart the changer as you did? No experience fixing any car stereo problem at all, but if this is what I must do, then so be it! Do not want to give someone several hundred dollars if it's something fairly easy to fix. =)

Posted by [Amy](#) on December 08, 2009 at 02:58 PM PST #

Amy, my car is 2001 C320, so it might be the same or similar unit. Skipping might be due to dirty lens that could be cleaned with CD lens cleaner disc or other products. If the CD fails to recognize there are CDs in the magazine (probably says magazine empty or something like that), then you can try to follow my instructions.

-miko

Posted by [miko](#) on December 08, 2009 at 04:16 PM PST #

I have followed the instructions in this post and it really worked for me. The only problem is that after a few days working fine, the charger fails again. I have opened it a total of 6 times so I guess it may be worth changing that part for a new one.

Does anyone know where can I order this part or the part number please?

Thanks

Posted by [Glen](#) on January 16, 2010 at 05:18 PM PST #

Thank you all for viewing my blogs. Due to Oracle blogging policy, I have moved all my personal blogs to <http://mikofang.blogspot.com>. Please leave your comments there

instead.

-miko

Posted by [Miko](#) on March 24, 2010 at 01:47 PM PDT <#>

Now, the actual repair/adjustment. On the lower left hand side of the picture below, you will see this worm/wheel drive gear. There was a small gap between them, causing the worm to not driving the gear, and therefore, failed to pick up the CD.

Please help.

My issue is what color is this gear I do not see it in the picture because I am not sure what it looks like. Is it somewhere near that white telephone type wire on the bottom left??

Thank you

Posted by [colleen vogel](#) on April 07, 2010 at 01:27 AM PDT <#>

Colleen, the gear is white. You can click on the picture to enlarge it. Sorry, the circle I draw was too thin.

-miko

Posted by [Michael Fang](#) on April 12, 2010 at 01:49 PM PDT <#>

My charger is in the trunk and makes a whirring noise and then goes back to radio, I click on CD again and it says "No" Ill try this out and check back in! thanks for the info! :)

Posted by [Matt](#) on April 13, 2010 at 07:41 PM PDT <#>

I want a part from this model, wich is the film contac from lasser control inside the machene. Maybe it was damaged when opened.

Posted by [redi](#) on April 14, 2010 at 12:22 AM PDT <#>

I want a part from this model, wich is the film contac from lasser control inside the machene. Maybe it was damaged when opened.

Posted by [redi](#) on April 14, 2010 at 12:23 AM PDT <#>

I want a part from this model, wich is the film contac from lasser control inside the machene. Maybe it was damaged when opened.

Posted by [redi](#) on April 14, 2010 at 12:24 AM PDT <#>

Does anyone know how to remove the CD changer off of a 2005 SL R230? I was about 80% out, I could move the changer, but it

wouldn't come out. Mine sits in the compartment behind the passenger seat. At least for my left hand drive car. I've also checked the carstereohelp.com, but they didn't have my car there...any help anyone? :(

Posted by **Stan** on April 26, 2010 at 06:20 PM PDT #

I have 4 rubber bushings for sale. I have a unit I scraped for parts. I'll sell for \$24.00 for the set of four. Free shipping in the U.S.

Thanks,
Gary

Posted by **Gary** on April 27, 2010 at 06:40 AM PDT #

Hello Miko e Co.

first of all...

my compliments for the guide for repairing the MB CD Changer. Well i have the same error: NO CD 1-6 but in my case, it comes out on the display while i listening a cd.

Then after i take out and put back in the magazine in the changer it start reading again the cd.

I open the cd changer and following the Miko guide.

I also use some silicon while grease on the mechanical parts but the cd changer sometimes stops reading. And suggestion??

Posted by **jack** on April 28, 2010 at 01:41 PM PDT #

Could you show me exactly what the worm gear looks like and where it is located and which screw there to lossen.

Thanks Colleen

Posted by **colleen vogel** on April 28, 2010 at 08:59 PM PDT #

Colleen, please click on the last picture to see enlarge it. Sorry the red circle I drew was too thin.

-miko

Posted by **miko** on April 28, 2010 at 09:24 PM PDT #

HELP!! I have a similar model 6 disc cd changer in the trunk of my car. It wont pick up the cd's, it keeps saying "No Disc" when in fact its full of disc's. It never attempts to load the cd and try to read them. Do you think this fix will do the trick?

my car is a 328ci bmw, I think its an alpine changer.

Posted by **aaron velarde** on May 14, 2010 at 09:48 AM PDT #

Never mind, I just messed around inside of it and cleaned the

laser... rotated some gears and voila, it works. I was determined to get it working without having to pay to fix it.

Thanx this blog did help!

Posted by **aaron velarde** on May 14, 2010 at 12:46 PM PDT #

i bought a cd changer and it broke i want to know if i could send it to you and maybe get it fixed i cant get it to eject or get the cds to play

Posted by **Damien** on May 16, 2010 at 09:39 AM PDT #

Aaron, I am glad your changer works now.

Damien, sorry I am not able to repair CDs for others. I am not a professional in repair. If your CD doesn't eject, you can open up the case and manually move the gear to eject the CD.

By the way, I have moved my blog to <http://mikofang.blogspot.com/2010/03/cd-changer-repair.html> because of Oracle blogging policy.

Posted by **miko** on May 16, 2010 at 11:14 AM PDT #

I found that the motor was bad. A little more disassembly to replace it but was able to do it.

Posted by **Keith** on May 19, 2010 at 10:41 AM PDT #

Glad I came upon this thread. Repair shop told me my S2000 changer was toast and a simple \$800 would put an OEM replacement in. Being a stingy Scot, I did a search and found the answer here. My problem was similar, but the worm gear had become bound and a bit of a manual twist freed it up so the changer works like new again.

Thanks.

Posted by **Mike** on May 25, 2010 at 08:06 PM PDT #

Thanks for the info mine is working!

Posted by **Colleen** on May 26, 2010 at 05:31 AM PDT #

my cd player displays cde.1 and will not play my multi disk tray can you tell me what i could do to correct this problem.

Posted by **angie** on July 09, 2010 at 10:11 AM PDT #

I have 4 rubber bushings. My add ress is gejp48 at gmail dot com. Let me know.

Posted by **Gary** on July 09, 2010 at 11:22 AM PDT <#>

Mine is in a 99 MB 320. I took the changer out of the trunk and found the #2 disc tray was in the play position, without a CD in it. I tried the black wheel to turn the worm gear but it only goes so far and stops. It is like the tray is jamming on something, either in the mechanism or one of the two other disc trays. Any ideas?
ScottO

Posted by **ScottO** on July 25, 2010 at 02:14 PM PDT <#>

Hi,
Mine is a 1999 Mercedes C-230 kompressor; ever since i changed the battery my cd changer kept coming on and off. Its been 2months now my cd last worked, all i see is the sign "No CD Changer". Any soln?
is there any way i can reset the system that will make it work?

Posted by **Mark Xrende** on August 06, 2010 at 01:02 AM PDT <#>

Post a Comment:

Name:

E-Mail:

URL:

Notify me by email of new comments

Remember Information?

Your Comment:

HTML Syntax: *NOT allowed*

Please answer this simple math question

3 + 67 =

Preview

Post

