



SEARCH

ABOUT US TERMS VIDEOS PRIVACY POLICY CUSTOMER FEEDBACK GALLERY CONTACT US [MEMBERS AREA](#)



- Air and Fuel Delivery Systems
- Air Conditioning, Heating and Ventilation
- Articles Advice and Technical Data
- Body Panels
- Bonnet – Hood
- Books and Manuals
- Boot – Luggage Lid
- Car Covers and Carpets
- Car Shows XK8 XKR
- Cars for Sale XK8 and XKR's
- Convertible Top and Accessories
- Cooling System
- DCR XK8 XKR Parts and Accessories News
- Drivebelt System
- Electrical System
- Engine Parts
- Exhaust Systems
- Exterior Styling Accessories
- Front Brakes, ABS and Hub Assembly
- Front Suspension
- Interior Styling and Trim
- Jaguar XK8 XKR (X150) Parts and Accessories Selection
- Lighting
- Oils / Lubricants
- Rear Brakes and Hub Assembly
- Rear Bumper
- Rear Drive Axle and Subframe
- Rear Suspension Parts
- Seating
- Servicing
- Shipping Services
- Steering System
- Supercharger Intercooler

How to Replace a Headlamp Lens on a Jaguar XK8 / XKR (X100)

This is an excellent 'How To' Procedure' to change the front headlamp unit on a Jaguar XK8 XKR (X100) completed by Mr Marvin Miller based in the USA. Thanks to Marvin for this. Marvin was initially under the impression that he would need to replace the whole assembly at high cost whereas in fact only the lens needed to be replaced at much less cost. This procedure covers the work to be done leaving the inner wheel arch lining and the front bumper cover in place to save time. Others may wish to remove these to do the job. New correct Jaguar XK8 XKR headlamp lens and shipping to the USA provided by ourselves.

First some back ground: This procedure took me 90 minutes, but that's because I stopped to figure out how to complete the process. Your actual time should be about 45 minutes or less. One particular step had me perplexed for 20 minutes, until I got curious. Then the step was finished in 6 minutes.

Also, I knew there was an easier way to complete this procedure. I knew I was doing it the hard way, but for good reason. I set out to replace my headlight lens with the intention of completing and documenting the procedure so the average guy, with basic tools could do it.

I read a number of posts recommending the removal of the wheel arch and even the front fascia, but I wanted to see if I could get away with not doing those 2 steps. Would it have been easier if I had? Yes, but again I wanted to see if it could be done without them.

In my "adventure" yesterday I discovered a couple tricks that will make your ability to perform this task a lot easier. While a pdf. will show you the what and where, it will not tell you the how and effect. One example is that, and this is important, the new seal that comes with the new lens assembly has not been compressed for years and years, so it is thicker, and this creates a problem for reinstalling the T40 screw. The new thickness causes the screw to not line up but I've got a work around in this post.

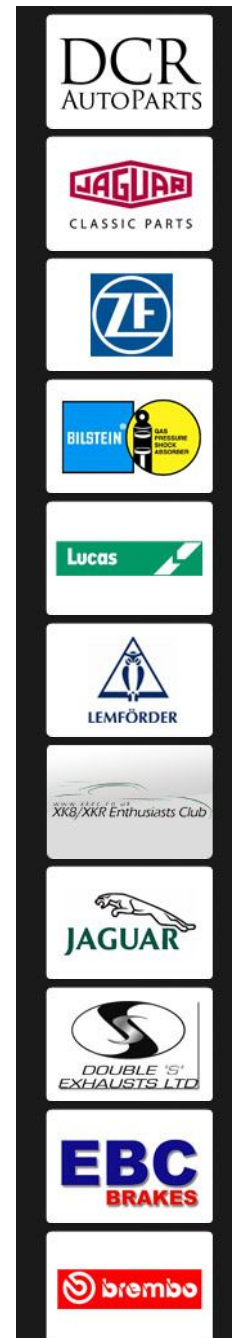
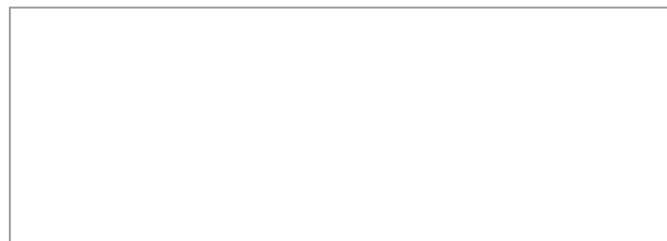
One unexpected new favorite tool is a 4"x8"x12" square Tupperware pitcher I use to put bird food in the bird feeders. It makes a perfect shop "pillow" when I'm laying on your back and it slides across the cement garage floor with you as you move. NO MORE STRAINED NECK MUSCLES!!!

The pictures are in order of the process, and the assembly is the reverse.

Remember to be mindful of the lens installation as the plastic tabs that lock the lens assembly to the headlight assembly will break if you pry them away to much, lift them gently with a flat tool enough to clear the locking point and no further.

A shop light is absolutely a must have. If you do not have one, go buy one before beginning this procedure, you will not be successful without one. Make sure to have a LED light bulb installed in the shop light as well. They don't generate the heat of a standard bulb and wont break every time you move it.

Make sure you have the hex bits T30 and T40 before starting. They are not expensive and can be bought in a set of 5 or six for around \$10.00 (U.S)



- Tools and Hire Service
- Transmission and Driveline
- Troubleshooting
- Used Parts
- Wheels and Accessories
- Windshield and Rear View Mirror
- Wood Trim
- XK8 / XKR Gift Selection



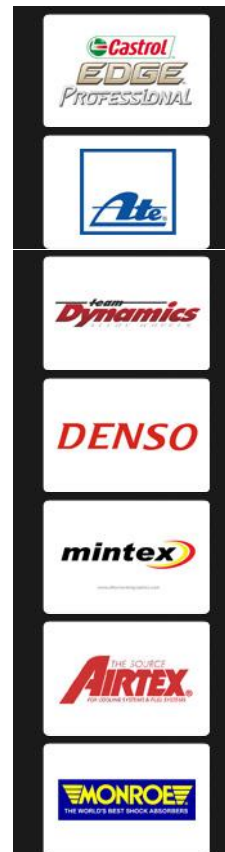
The reason for the adventure damaged XK8 XKR headlamp lens caused by stone damage



Have a look around - Initial View



Remove the plastic cover, it just slides out. You may not have it, mine is missing from the other side of the car



FOLLOW US

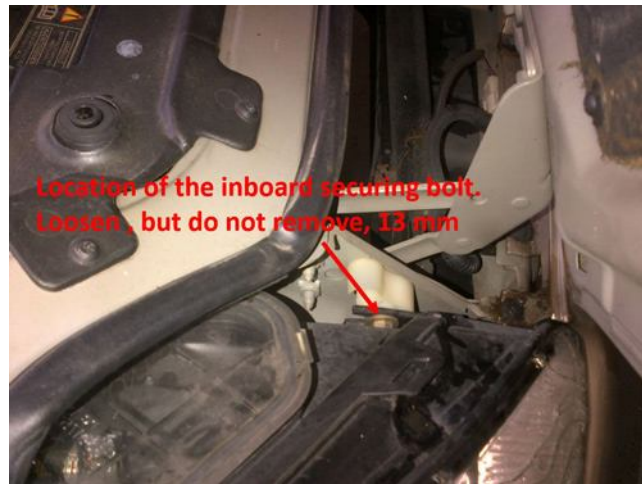
Facebook

Twitter



Example of the securing tabs

This is an example of the typical tabs that hold the lens to the headlight assembly.



**Location of the inboard securing bolt.
Loosen, but do not remove, 13 mm**

Image 5 Self Explanatory



**Outboard securing screw,
T30, remove this.**

Outboard Securing Screw T30 Remove This



This is the T40 hex screw that holds the lens bottom of the assembly to the car. The removal of this screw is indeed the toughest part of this procedure.



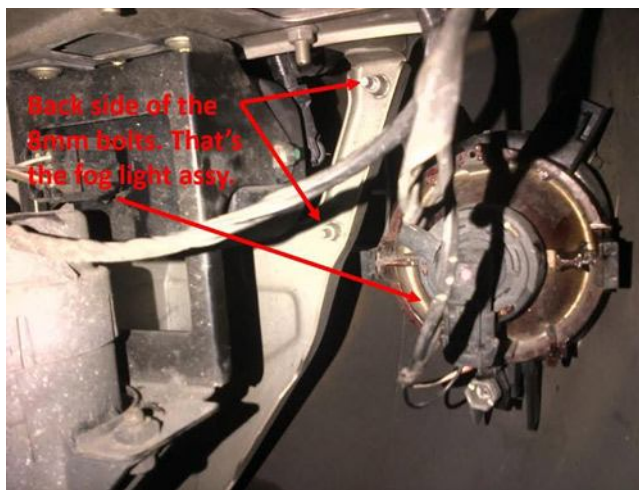
Using the combination of 1/4" socket wrench, 1/4" socket & extension and the T40 hex bit, put your arm through the access hole and remove the screw. It's a cumbersome task, but not too bad. It's a bit irritating because you can only use one eye at a time to see the screw for this step.



T40 screw removed



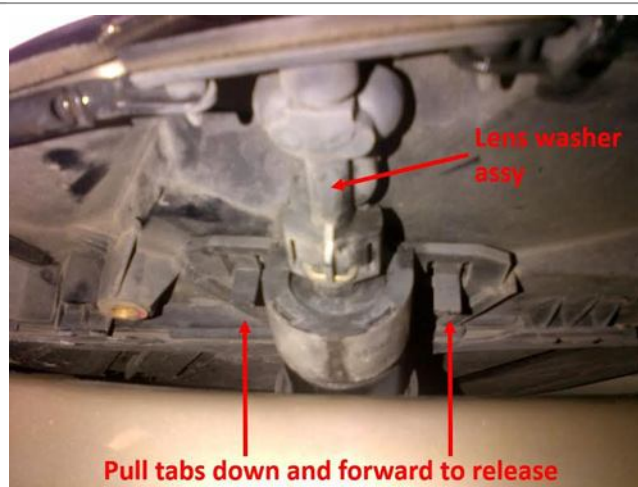
On a 1999 XK8, if you lay down in front of the car (with the Tupperware under your head), directly below the grill, there is a large opening that allows you to look up and inside where you just removed the T40 screw. On the same bracket as the screw, there are two 8mm bolts that need to be loosened, but not removed. These need to be loosened due to the thickness of the new seal. If you do not loosen these two bolts, when you go to reinstall the T40 screw, the hole will not line up with the bracket. This is because the clip to secure the two assemblies together is extremely difficult to snap in place. I got within a hair width to clipping it with no luck. By loosening these, when I tightened them later, the clip snapped in place.



Back view of the same bolts, looking through the access hole.



Carefully "wriggle" the headlight assy forward.



Unclick the washer assembly. Though not pictured, I found it easier to disconnect the washer hose when installing the lens assembly. That's because the hose gets "in the way" for assembly. The hose clip is a simple slide/lock style.



Another clip view



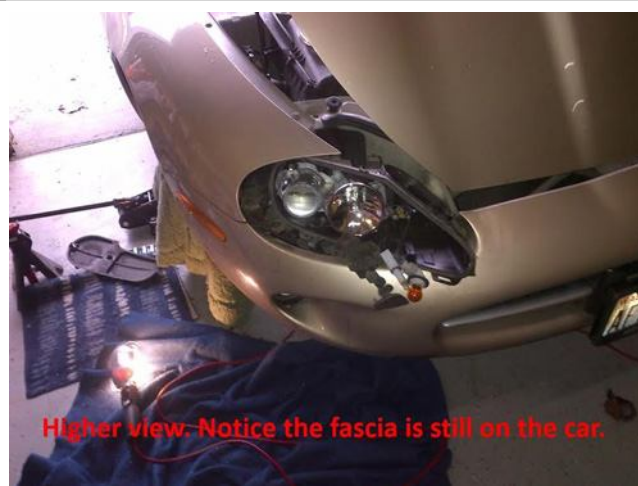
You CAN remove the T40 screw by reaching through the access door...

The beauty of the shop light. That's the fog light assembly with the red dot.



Assembly pulled forward, lens assy and Washer assy, turn signal and driving light detached

Lens removed. You can see the slide/lock clip for the washer assembly just touching the fascia, I hadn't discovered the need to remove the washer unit at this point.

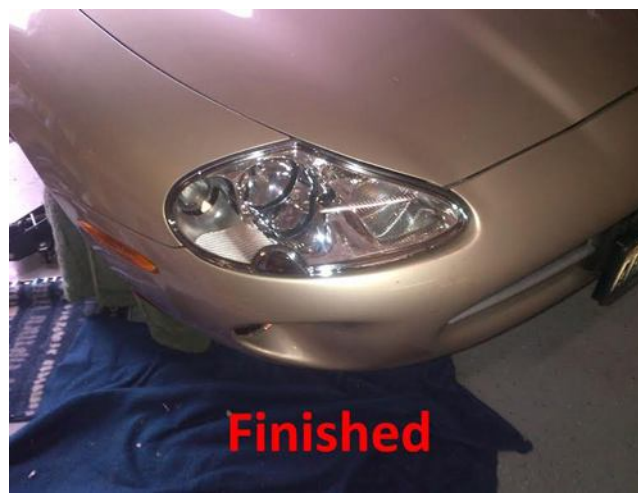


Higher view: Notice the fascia is still on the car.

Another view as in #17)



Proof that only the access door was removed



Finished - A Bright, Shiny and Effective New Jaguar XK8 XKR Lens



90 Minutes Taken Including a Quick Lunch!



Dramatic Difference Between Old and New XK8 Lens



Short of a jack, jack stand and tire iron, these are the only tools used...

Here are the main tools to use on this job

[CLICK HERE TO CONTACT DAVE TO DISCUSS / ORDER PARTS](#)

[DCR AutoParts - Jaguar XK8 and XKR Parts and Accessories](#)

Leave a Reply

Logged in as DavidYau. Logout »

Submit Comment

Glenview, Gartally, Drumnadrochit, Inverness-shire, United Kingdom, IV63 6XS 6JP T: +44 (0)1456 450756 M: +44 (0)780 1495324 E: enquiries@dcrautoparts.com

• [Jaguarpartsdiy](#) • [car parts and accessories](#) • [jaguar car parts](#) • [jaguar XKR](#) • [jaguar XK8](#) •