

Driver or Passenger Seat Module  
(DSM/PSM) Lid – Damaged or Loose –  
Lids Available Separately

MODEL 2001 MY-ON  
XK Range  
VIN A11051-ON

**Issue:**

When a damaged or loose lid has been identified on a DSM or PSM on XK vehicles within the above VIN range, it is no longer necessary to replace the DSM or PSM. The module lid is now a serviceable item.

**Action:**

To install a new module lid, follow the procedure outlined below.

1. Remove seat module (see Global Technical Reference GTR Workshop Manual, section 419-10, DSM SRO 86.75.28 or PSM SRO 86.75.16).
2. Place the module on a clean work surface with the fixing studs uppermost.

**⚠ Caution:** Do not touch the electronic board or connector pins with hands or any tools. Do not allow foreign particles to enter the module.  
The holes in the module for the tabs can be easily broken with excess movement.

3. Use a suitable tool to carefully release the module lid tabs and remove the lid from the module. Retrieve any broken pieces from the old module lid (Illustration 1).

LOCATION OF TABS FOR MODULE LID

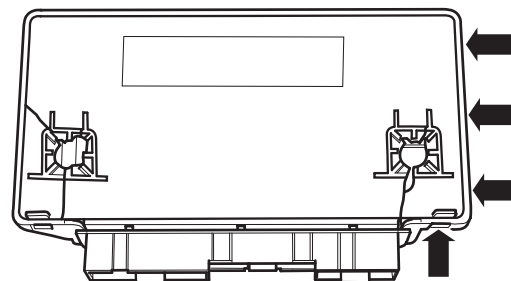


ILLUSTRATION 1

**NOTE: THE INFORMATION IN TECHNICAL BULLETINS IS INTENDED FOR USE BY TRAINED, PROFESSIONAL TECHNICIANS WITH THE KNOWLEDGE, TOOLS, AND EQUIPMENT TO DO THE JOB PROPERLY AND SAFELY. IT INFORMS THESE TECHNICIANS OF CONDITIONS THAT MAY OCCUR ON SOME VEHICLES, OR PROVIDES INFORMATION THAT COULD ASSIST IN PROPER VEHICLE SERVICE. THE PROCEDURES SHOULD NOT BE PERFORMED BY "DO-IT-YOURSELFERS." DO NOT ASSUME THAT A CONDITION DESCRIBED AFFECTS YOUR CAR. CONTACT A JAGUAR DEALER TO DETERMINE WHETHER THE BULLETIN APPLIES TO YOUR VEHICLE.**

- Use a suitable permanent marker pen to transfer the information shown in Illustration 2 from the old module lid to the inside and outside of the new module lid).

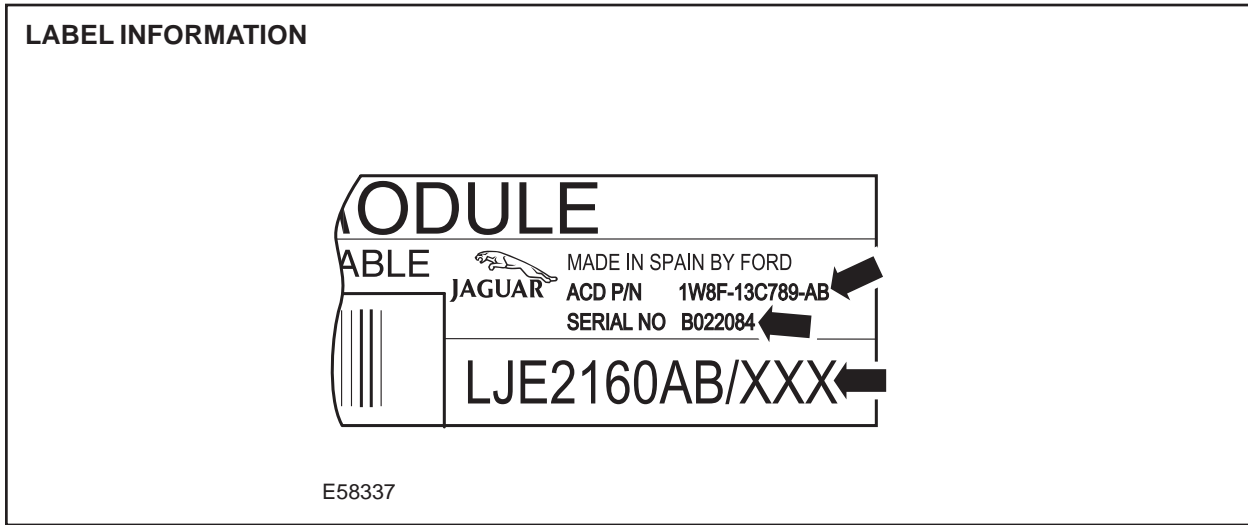


ILLUSTRATION 2

- Align the new lid with the module, ensuring all tabs line up with the module.
- Carefully press the lid into the module until the tabs on the opposite side of the connectors engage.
- Carefully press the lid into the module until the remaining tabs engage.
- Install the seat module (see Global Technical Reference GTR Workshop Manual, section 419-10, DSM SRO 86.75.28 or PSM SRO 86.75.16).

**Global Technical Reference (GTR) Workshop Manual Information:**

Dealer access: <https://hub.franchise.jaguar.com>

Internet access: <http://www.jaguartechno.com>

**Parts Information:**

<u>DESCRIPTION</u>	<u>PART NUMBER</u>	<u>QTY</u>
Module lid	C2N 3565	1

**Warranty Information:**

Warranty claims should be submitted quoting the information found in the table below. This will result in payment of the stated time and, where applicable parts/miscellaneous expense codes as listed.

Description	SRO	Time	Causal Part Number
Install a new DSM lid	86.93.52	0.4 hrs.	C2N 3565
Install a new PSM lid	86.93.52/01	0.4 hrs.	C2N 3565