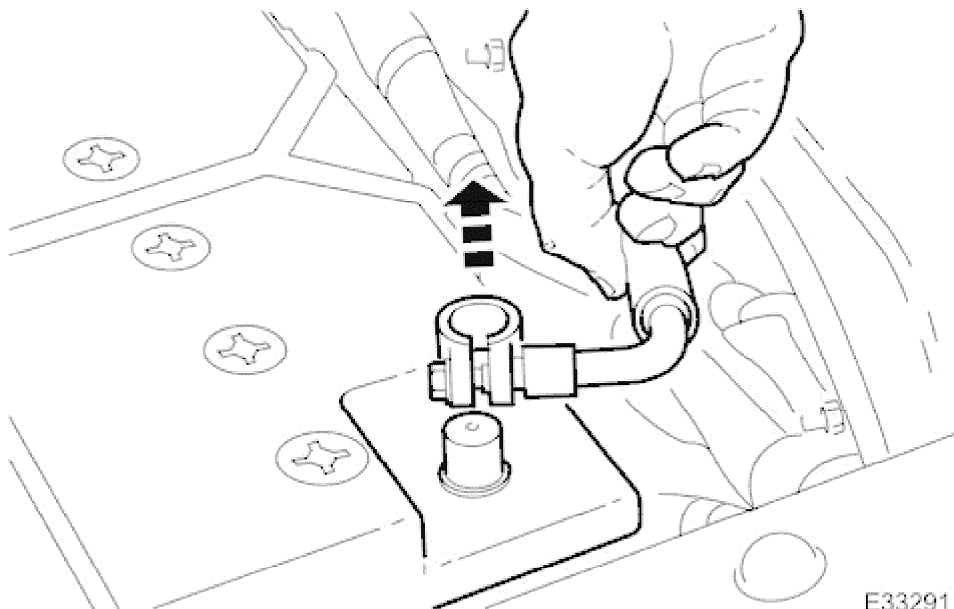


Oil Pump Vehicles Without: Supercharger 12.60.26

Removal

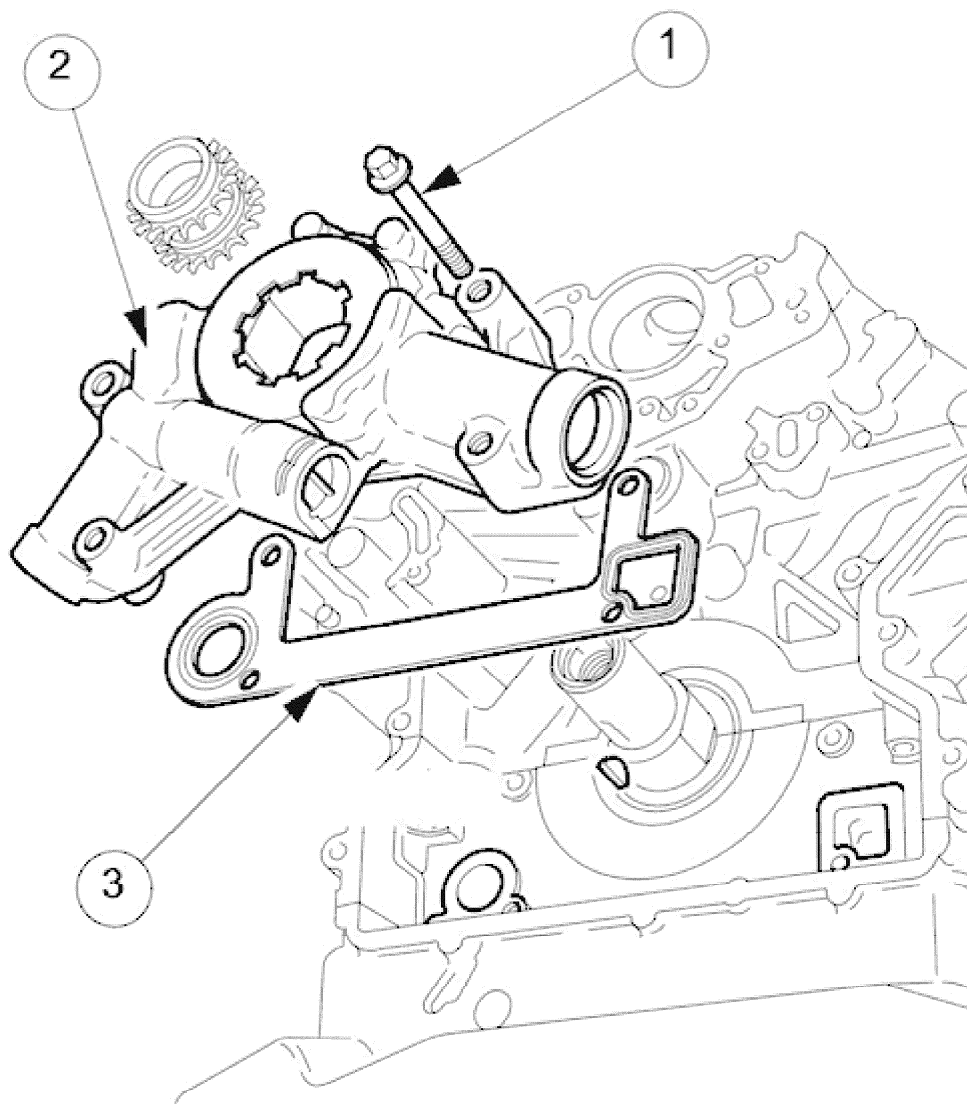
1. Open the driver's door, or both doors if necessary, to allow the side glass to drop. Ensure that the doors remain open until after the battery has been disconnected.



2. Disconnect battery ground cable.
 - Remove the battery cover.

3. Remove the engine compartment cover (bonnet) for improved access to the front of the engine. Refer to Operation <<76.16.01>>.

4. Remove the Crankshaft Sprocket B-bank. Refer to Operation <<12.65.76>>.

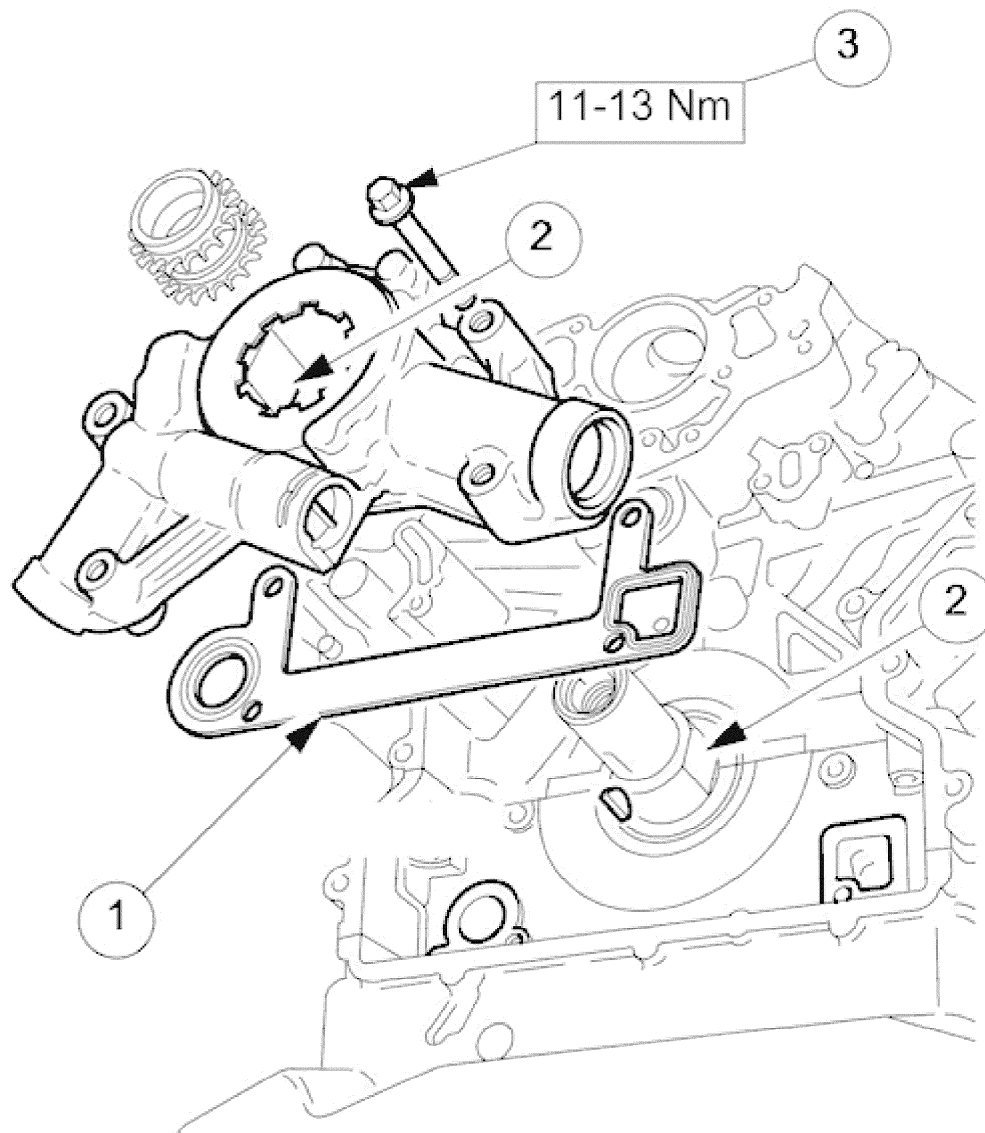


E33890

5. Remove the oil pump.
 1. Remove the four bolts which secure the oil pump to the cylinder block.
 2. Remove the oil pump.
 3. Remove the gasket.

6. Clean and inspect all components and mating faces.

Installation



E33891

1. Fit the oil pump to the cylinder block.
 1. Fit a new gasket to the block face.
 2. Fit the oil pump onto the front of the crankshaft, to the block face; ensure that the drive flats on the inside of the pump gear engage correctly with the mating flats on the crankshaft.
 3. Fit the securing bolts and tighten to 11 - 13 Nm.
2. Refit both sprockets to the crankshaft, both primary timing chains, the timing cover and all associated components. Refer to Operation <<12.65.76>>.
3. Refit the engine compartment cover (bonnet). Refer to Operation <<76.16.01>>.
4. Reset the side glass memory. Refer to the Battery Reconnection Procedure <<86.15.15>>.